

**MP FPC 20/30****Weidmüller Interface GmbH & Co. KG**

Klingenbergstraße 26

D-32758 Detmold

Germany

[www.weidmueller.com](http://www.weidmueller.com)**Similar to illustration**

Mounting plates, 1.5 mm sheet steel, galvanised

**General ordering data**

Version	FPC (polycarbonate empty enclosure), Mounting plate, Mounting plate, Height: 200 mm, Width: 300 mm, Depth: 1.5 mm, Material: Sheet steel, galvanized, silver
Order No.	<a href="#">9535930000</a>
Type	MP FPC 20/30
GTIN (EAN)	4032248009657
Qty.	1 pc(s).

Creation date October 2, 2024 6:11:23 PM CEST

Catalogue status 28.09.2024 / We reserve the right to make technical changes.

**MP FPC 20/30****Weidmüller Interface GmbH & Co. KG**

Klingenbergstraße 26

D-32758 Detmold

Germany

[www.weidmueller.com](http://www.weidmueller.com)**Technical data****Dimensions and weights**

Depth	1.5 mm	Depth (inches)	0.059 inch
Height	200 mm	Height (inches)	7.874 inch
Width	300 mm	Width (inches)	11.811 inch
Net weight	468 g		

**General information**

Material	Sheet steel	Surface finish	galvanized
Type of fixing	when screwed in		

**Classifications**

ETIM 6.0	EC000213	ETIM 7.0	EC000213
ETIM 8.0	EC000213	ETIM 9.0	EC000213
ECLASS 9.0	27-40-06-39	ECLASS 9.1	27-18-92-90
ECLASS 10.0	27-40-06-39	ECLASS 11.0	27-40-06-39
ECLASS 12.0	27-40-06-39	ECLASS 13.0	27-40-06-39
ECLASS 14.0	27-40-06-39		

**Environmental Product Compliance**

REACH SVHC	/
RoHS Compliance Status	Compliant without exemption

**Approvals**

ROHS	Conform
------	---------

**Downloads**

Engineering Data	<a href="#">CAD data – STEP</a>
Catalogues	<a href="#">Catalogues in PDF-format</a>
Brochures	

**MP FPC 20/30****Weidmüller Interface GmbH & Co. KG**

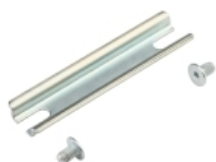
Klingenbergstraße 26

D-32758 Detmold

Germany

[www.weidmueller.com](http://www.weidmueller.com)**Accessories****TS 15**

## Accessories

**General ordering data**

Type	TS15X5 ST FPC 20 VER	Version
Order No.	<a href="#">8000037604</a>	Rail, TS 15, Width: 235 mm, without slot, Steel, galvanized, chromium-plated
GTIN (EAN)	4050118653168	
Qty.	20 pc(s).	

**TS 35**

## Accessories

**General ordering data**

Type	TS35X7.5 ST FPC 20 VER	Version
Order No.	<a href="#">8000037558</a>	Rail, TS 35, TS 35 x 7.5, Width: 165 mm, with slot, without slot, Steel, galvanized, chromium-plated
GTIN (EAN)	4050118653229	
Qty.	20 pc(s).	
Type	TS35X7.5 ST FPC 30 HOR	Version
Order No.	<a href="#">8000037559</a>	Rail, TS 35, TS 35 x 7.5, Width: 265 mm, with slot, without slot, Steel, galvanized, chromium-plated
GTIN (EAN)	4050118653236	
Qty.	20 pc(s).	