

WDK 2.5 LD/RT 1D 2R 230**Weidmüller Interface GmbH & Co. KG**

Klingenbergstraße 26

D-32758 Detmold

Germany

www.weidmueller.com**Product image**

Why not integrating simple electrical functions into a feed through terminal. It has the same slim design of our feed-through terminal blocks - with additional functions such as cross-connections that can be used. Often, you only need a small component to integrate an external device into your automation technology. Our modular terminal blocks with electronic components make this possible; quickly, simply, and with a perfect fit.

General ordering data

| | |
|------------|--------------------------------------------------------------------------------------------------------------------------------------------------------------|
| Version | Component terminal block, Screw connection, dark beige, 2.5 mm ² , 230 V, 230 V, Number of connections: 3, Number of levels: 2, TS 35, V-0, Wemid |
| Order No. | 8013140000 |
| Type | WDK 2.5 LD/RT 1D 2R 230 |
| GTIN (EAN) | 4008190024628 |
| Qty. | 25 pc(s). |

WDK 2.5 LD/RT 1D 2R 230**Weidmüller Interface GmbH & Co. KG**

Klingenbergstraße 26

D-32758 Detmold

Germany

www.weidmueller.com

Technical data**Dimensions and weights**

| | | | |
|------------|---------|-----------------|------------|
| Depth | 62.5 mm | Depth (inches) | 2.461 inch |
| Height | 69 mm | Height (inches) | 2.717 inch |
| Width | 5.1 mm | Width (inches) | 0.201 inch |
| Net weight | 11.71 g | | |

Temperatures

| | | | |
|----------------------------------|----------------|----------------------------------|--------|
| Storage temperature | -25 °C...55 °C | Continuous operating temp., min. | -50 °C |
| Continuous operating temp., max. | 120 °C | | |

Material data

| | | | |
|---------------------------|-------|--------|------------|
| Material | Wemid | Colour | dark beige |
| UL 94 flammability rating | V-0 | | |

System specifications

| | | | |
|-------------------------------------|----------------------------|-------------------------------|-----|
| Version | Screw connection, with LED | End cover plate required | Yes |
| Number of potentials | 1 | Number of levels | 2 |
| Number of clamping points per level | 2 | Number of potentials per tier | 1 |
| Levels cross-connected internally | Yes | PE connection | No |
| Rail | TS 35 | N-function | No |
| PE function | No | PEN function | No |

2 clampable conductors (H05V/H07V) with equal cross-section (rated connection)

| | | | |
|------------------------------------------------------------------------------------------------------------|---------------------|------------------------------------------------------------------------------------------------------------|---------------------|
| Wire connection cross section, finely stranded with wire-end ferrules DIN 46228/1, 2 clampable wires, max. | 1.5 mm ² | Wire connection cross section, finely stranded with wire-end ferrules DIN 46228/1, 2 clampable wires, min. | 0.5 mm ² |
| Wire connection cross section, finely stranded, two clampable wires, min. | 0.5 mm ² | Wire cross-section, finely stranded, two clampable wires, max. | 1.5 mm ² |

Additional technical data

| | | | |
|--------------------------|-------|-----------------------------|---------|
| Explosion-tested version | No | Number of similar terminals | 1 |
| Open sides | right | Type of mounting | Snap-on |

WDK 2.5 LD/RT 1D 2R 230

Weidmüller Interface GmbH & Co. KG

Klingenbergstraße 26

D-32758 Detmold

Germany

www.weidmueller.com

Technical data

Conductors for clamping (rated connection)

| | | | | |
|-----------------------------------------------------------------------------------------|----------------------------------------|------------------------------|-----------------------|-------|
| Clampable conductor | Connection specification | Screw connection | | |
| | Cross-section for conductor connection | Type | solid, H05(07) V-U | |
| | | min. | 0.5 mm ² | |
| | | max. | 4 mm ² | |
| | | nominal | 2.5 mm ² | |
| | wire end ferrule | Stripping length | min. | 10 mm |
| | | | max. | 10 mm |
| | | | nominal | 10 mm |
| | | Recommended wire-end ferrule | | |
| | Connection specification | Screw connection | | |
| | Cross-section for conductor connection | Type | flexible, H05(07) V-K | |
| | | min. | 0.5 mm ² | |
| | | max. | 4 mm ² | |
| | | nominal | 2.5 mm ² | |
| | wire end ferrule | Stripping length | min. | 10 mm |
| max. | | | 10 mm | |
| nominal | | | 10 mm | |
| Recommended wire-end ferrule | | | | |
| Clamping range, max. | 2.5 mm ² | | | |
| Clamping range, min. | 0.13 mm ² | | | |
| Connection direction | on side | | | |
| Number of connections | 3 | | | |
| Stripping length | 10 mm | | | |
| Type of connection | Screw connection | | | |
| Type of connection 2 | Screw connection | | | |
| Wire connection cross section AWG, max. | AWG 12 | | | |
| Wire connection cross section AWG, min. | AWG 26 | | | |
| Wire connection cross section, finely stranded, max. | 2.5 mm ² | | | |
| Wire connection cross section, finely stranded, min. | 0.5 mm ² | | | |
| Wire connection cross-section, finely stranded with wire-end ferrules DIN 46228/1, max. | 4 mm ² | | | |
| Wire connection cross-section, finely stranded with wire-end ferrules DIN 46228/1, min. | 0.5 mm ² | | | |
| Wire connection cross-section, solid core, max. | 4 mm ² | | | |
| Wire connection cross-section, solid core, min. | 0.5 mm ² | | | |

Dimensions

| | |
|--------------|---------|
| TS 35 offset | 35.5 mm |
|--------------|---------|

Display element

| | | | |
|-------------------------------------|-------|-------------------------------------|-------|
| Current | 5 mA | Indicator element | red |
| Operating voltage for display, max. | 230 V | Operating voltage for display, min. | 230 V |
| Type of voltage for indicator | AC | | |

WDK 2.5 LD/RT 1D 2R 230

Weidmüller Interface GmbH & Co. KG

Klingenbergstraße 26

D-32758 Detmold

Germany

www.weidmueller.com

Technical data

General

| | | | |
|-----------------------------------------|--------|-----------------------------------------|--------|
| Rail | TS 35 | Wire connection cross section AWG, max. | AWG 12 |
| Wire connection cross section AWG, min. | AWG 26 | | |

Rating data

| | | | |
|----------------------------------------------|---------------------|---------------------------------------------|--------|
| Rated cross-section | 2.5 mm ² | Rated voltage | 230 V |
| Rated DC voltage | 230 V | Rated current | 5 mA |
| Volume resistance according to IEC 60947-7-x | 1.33 mΩ | Power loss in accordance with IEC 60947-7-x | 0.77 W |

Classifications

| | | | |
|-------------|-------------|-------------|-------------|
| ETIM 6.0 | EC000903 | ETIM 7.0 | EC000903 |
| ETIM 8.0 | EC000903 | ETIM 9.0 | EC000903 |
| ECLASS 9.0 | 27-14-11-27 | ECLASS 9.1 | 27-14-11-47 |
| ECLASS 10.0 | 27-14-11-27 | ECLASS 11.0 | 27-14-11-27 |
| ECLASS 12.0 | 27-14-11-27 | ECLASS 13.0 | 27-25-01-14 |
| ECLASS 14.0 | 27-25-01-14 | | |

Environmental Product Compliance

| | |
|--------------------------------------|--------------------------------------|
| REACH SVHC | Lead 7439-92-1 |
| SCIP | a3090896-Of16-410d-aabb-617cfb571002 |
| RoHS Compliance Status | Compliant with exemption |
| RoHS Exemption (if applicable/known) | 7a, 7cl |

Important note

| | |
|---------------------|---------------------------------------------------------------|
| Product information | The allowed continuous operating temperature must be observed |
|---------------------|---------------------------------------------------------------|

Approvals

Approvals



| | |
|------|---------|
| ROHS | Conform |
|------|---------|

Downloads

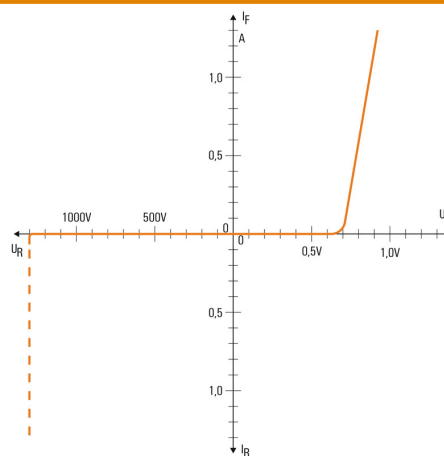
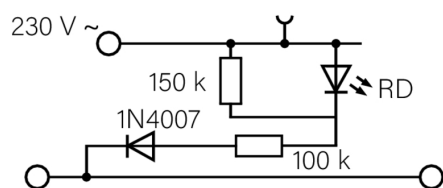
| | |
|---------------------------------------------|----------------------------------------------------------------------------------------------------------------------------------------------------------------|
| Approval/Certificate/Document of Conformity | CE Declaration of Conformity UKCA declaration of conformity Confirmation of Standards EN 45545-2_2020-10 |
| Engineering Data | CAD data – STEP |
| User Documentation | StorageConditionsTerminalBlocks |
| Catalogues | Catalogues in PDF-format |

WDK 2.5 LD/RT 1D 2R 230**Weidmüller Interface GmbH & Co. KG**

Klingenbergstraße 26

D-32758 Detmold

Germany

www.weidmueller.com**Drawings**

WDK 2.5 LD/RT 1D 2R 230

Weidmüller Interface GmbH & Co. KG

Klingenbergstraße 26

D-32758 Detmold

Germany

www.weidmueller.com

Accessories

SAK-Series

SAK
Series

Weidmüller's range of products includes end brackets that guarantee a permanent, reliable mounting on the terminal rail and prevent sliding. Versions with and without screws are available. The end brackets include marking options, also for group markers, and also a test plug holder.

General ordering data

| | | |
|------------|----------------------------|--------------------------------------------------------------|
| Type | EW 35 | Version |
| Order No. | 0383560000 | End bracket, beige, TS 35, V-2, Wemid, Width: 8.5 mm, 100 °C |
| GTIN (EAN) | 4008190181314 | |
| Qty. | 50 pc(s). | |

Blank



The Dekafix (DEK) marker is the universal marker for all conductor and plug-in connectors as well as for electronic sub-assemblies. The system is ideal for short number sequences and covers a wide range of ready-printed markers.

Strips for fast installation in only one work step. The printing is easy to read, rich in contrast and available in various widths.

- Large range of ready-to-use markers
- Strips for fast installation
- Terminal markers, suitable for all Weidmüller cable connectors
- Available as blank MultiCard or with standard printing

For custom printing: Please send us a file of our labeling software M-Print PRO or M-Print PRO Online (without installation) for your labeling specifications.

General ordering data

| | | |
|------------|----------------------------|-----------------------------------------------------------|
| Type | DEK 5/5 MC NE WS | Version |
| Order No. | 1609801044 | Dekafix, Terminal marker, 5 x 5 mm, Pitch in mm (P): 5.00 |
| GTIN (EAN) | 4008190397111 | Weidmueller, white |
| Qty. | 1,000 pc(s). | |

WDK 2.5 LD/RT 1D 2R 230

Weidmüller Interface GmbH & Co. KG

Klingenbergstraße 26

D-32758 Detmold

Germany

www.weidmueller.com

Accessories

Marker holder



The marker holder offer the possibility of additional mounting of standard markers with a pitch of 5 or 5.1 mm. The angled holders can be optionally snapped together and could be mounted in all standard marking channels of the Klippon® Connect modular terminal blocks. Fitting marker types could be found under the respective accessories of the designation marking holder.

General ordering data

| | | |
|------------|----------------------------|----------------------------|
| Type | BZT 1 WS 10/5 | Version |
| Order No. | 1805490000 | Accessories, Marker holder |
| GTIN (EAN) | 4032248270231 | |
| Qty. | 100 pc(s). | |
| Type | BZT 1 ZA WS 10/5 | Version |
| Order No. | 1805520000 | Accessories, Marker holder |
| GTIN (EAN) | 4032248270248 | |
| Qty. | 100 pc(s). | |

2.5 mm²



Screwable cross-connections are easy to mount and de mount. Thanks to the big contact surface, even high currents can be transmitted with maximum contact reliability.

General ordering data

| | | |
|------------|----------------------------|-----------------------------------------------------------------------------------------------------------------------------------|
| Type | WQV 2.5/5 | Version |
| Order No. | 1053960000 | Cross-connector (terminal), when screwed in, yellow, 32 A, Number of poles: 5, Pitch in mm (P): 5.10, Insulated: Yes, Width: 7 mm |
| GTIN (EAN) | 4008190158446 | |
| Qty. | 10 pc(s). | |
| Type | WQV 2.5/8 | Version |
| Order No. | 1054260000 | Cross-connector (terminal), when screwed in, yellow, 32 A, Number of poles: 8, Pitch in mm (P): 5.10, Insulated: Yes, Width: 7 mm |
| GTIN (EAN) | 4008190073572 | |
| Qty. | 10 pc(s). | |
| Type | WQV 2.5/2 | Version |
| Order No. | 1053660000 | Cross-connector (terminal), when screwed in, yellow, 32 A, Number of poles: 2, Pitch in mm (P): 5.10, Insulated: Yes, Width: 7 mm |
| GTIN (EAN) | 4008190031121 | |
| Qty. | 50 pc(s). | |
| Type | WQV 2.5/3 | Version |
| Order No. | 1053760000 | Cross-connector (terminal), when screwed in, yellow, 32 A, Number of poles: 3, Pitch in mm (P): 5.10, Insulated: Yes, Width: 7 mm |
| GTIN (EAN) | 4008190058999 | |
| Qty. | 50 pc(s). | |

WDK 2.5 LD/RT 1D 2R 230

Weidmüller Interface GmbH & Co. KG

Klingenbergstraße 26

D-32758 Detmold

Germany

www.weidmueller.com

Accessories

| | | |
|------------|----------------------------|----------------------------------------------------------------------|
| Type | WQV 2.5/15 | Version |
| Order No. | 1059660000 | Cross-connector (terminal), when screwed in, yellow, 32 A, Number of |
| GTIN (EAN) | 4008190002411 | poles: 15, Pitch in mm (P): 5.10, Insulated: Yes, Width: 7 mm |
| Qty. | 10 pc(s). | |
| Type | WQV 2.5/30 | Version |
| Order No. | 1067500000 | Cross-connector (terminal), when screwed in, yellow, 32 A, Number of |
| GTIN (EAN) | 4008190031107 | poles: 30, Pitch in mm (P): 5.10, Insulated: Yes, Width: 7 mm |
| Qty. | 10 pc(s). | |
| Type | WQV 2.5/32 | Version |
| Order No. | 1577600000 | Cross-connector (terminal), when screwed in, yellow, 32 A, Number of |
| GTIN (EAN) | 4008190154035 | poles: 32, Pitch in mm (P): 5.10, Insulated: Yes, Width: 7 mm |
| Qty. | 10 pc(s). | |
| Type | WQV 2.5/6 | Version |
| Order No. | 1054060000 | Cross-connector (terminal), when screwed in, yellow, 32 A, Number of |
| GTIN (EAN) | 4008190102272 | poles: 6, Pitch in mm (P): 5.10, Insulated: Yes, Width: 7 mm |
| Qty. | 10 pc(s). | |
| Type | WQV 2.5/4 | Version |
| Order No. | 1053860000 | Cross-connector (terminal), when screwed in, yellow, 32 A, Number of |
| GTIN (EAN) | 4008190049706 | poles: 4, Pitch in mm (P): 5.10, Insulated: Yes, Width: 7 mm |
| Qty. | 50 pc(s). | |
| Type | WQV 2.5/10 | Version |
| Order No. | 1054460000 | Cross-connector (terminal), when screwed in, yellow, 32 A, Number of |
| GTIN (EAN) | 4008190135089 | poles: 10, Pitch in mm (P): 5.10, Insulated: Yes, Width: 7 mm |
| Qty. | 20 pc(s). | |
| Type | WQV 2.5/7 | Version |
| Order No. | 1054160000 | Cross-connector (terminal), when screwed in, yellow, 32 A, Number of |
| GTIN (EAN) | 4008190011246 | poles: 7, Pitch in mm (P): 5.10, Insulated: Yes, Width: 7 mm |
| Qty. | 10 pc(s). | |
| Type | WQV 2.5/20 | Version |
| Order No. | 1577570000 | Cross-connector (terminal), when screwed in, yellow, 32 A, Number of |
| GTIN (EAN) | 4008190125868 | poles: 20, Pitch in mm (P): 5.10, Insulated: Yes, Width: 7 mm |
| Qty. | 10 pc(s). | |

WDK 2.5 LD/RT 1D 2R 230

Weidmüller Interface GmbH & Co. KG

Klingenbergstraße 26

D-32758 Detmold

Germany

www.weidmueller.com

Accessories

Custom printing



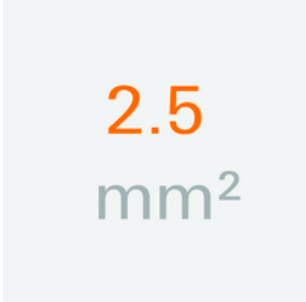
WS markers are the perfect match for the W-series connectors. Thanks to their system compatibility, the WS tags can also be used with the I-series and the Z-series. The large marking surfaces do not only permit long character strings but also multi-line text. WS markers are ideal for labels with long, customised character strings. Thanks to the proven MultiCard format, printing with PrintJet CONNECT oder/or Plotter is possible.

- Can be fitted in strips or individually
- Markers in proven MultiCard format

For custom printing: Please send us a file of our labeling software M-Print PRO or M-Print PRO Online (without installation) for your labeling specifications.

General ordering data

| | | |
|------------|----------------------------|-------------------------------------------------------------------|
| Type | WS 8/5 MC SDR | Version |
| Order No. | 1640750000 | WS, Terminal marker, 8 x 5 mm, Pitch in mm (P): 5.00 Weidmueller, |
| GTIN (EAN) | 4008190456627 | Allen-Bradley, To customer specification |
| Qty. | 144 pc(s). | |

2.5 mm²


2.5
mm²

End plates are fitted to the open side of the last modular terminal before the end bracket. The use of an end plate ensures the function of the modular terminal and the specified rated voltage. It guarantees protection against contact with live parts and makes the final terminal finger-proof.

General ordering data

| | | |
|------------|----------------------------|-----------------------------------------------------------------------|
| Type | WAP WDK2.5 | Version |
| Order No. | 1059100000 | End plate (terminals), dark beige, Height: 69 mm, Width: 1.5 mm, V-0, |
| GTIN (EAN) | 4008190101954 | Wemid |
| Qty. | 20 pc(s). | |

WDK 2.5 LD/RT 1D 2R 230

Weidmüller Interface GmbH & Co. KG

Klingenbergstraße 26

D-32758 Detmold

Germany

www.weidmueller.com

Accessories

Plus



The Dekafix (DEK) marker is the universal marker for all conductor and plug-in connectors as well as for electronic sub-assemblies. The system is ideal for short number sequences and covers a wide range of ready-printed markers.

Strips for fast installation in only one work step. The printing is easy to read, rich in contrast and available in various widths.

- Large range of ready-to-use markers
- Strips for fast installation
- Terminal markers, suitable for all Weidmüller cable connectors
- Available as blank MultiCard or with standard printing

For custom printing: Please send us a file of our labeling software M-Print PRO or M-Print PRO Online (without installation) for your labeling specifications.

General ordering data

| | | |
|------------|----------------------------|-----------------------------------------------------------|
| Type | DEK 5/5 PLUS MC NE WS | Version |
| Order No. | 1854490000 | Dekafix, Terminal marker, 5 x 5 mm, Pitch in mm (P): 5.00 |
| GTIN (EAN) | 4032248393596 | Weidmueller, white |
| Qty. | 1,000 pc(s). | |

Blank



WS markers are the perfect match for the W-series connectors. Thanks to their system compatibility, the WS tags can also be used with the I-series and the Z-series. The large marking surfaces do not only permit long character strings but also multi-line text.

WS markers are ideal for labels with long, customised character strings. Thanks to the proven MultiCard format, printing with PrintJet CONNECT oder/or Plotter is possible.

- Can be fitted in strips or individually
- Markers in proven MultiCard format

For custom printing: Please send us a file of our labeling software M-Print PRO or M-Print PRO Online (without installation) for your labeling specifications.

General ordering data

| | | |
|------------|----------------------------|-------------------------------------------------------------------|
| Type | WS 8/5 MC NE WS | Version |
| Order No. | 1640740000 | WS, Terminal marker, 8 x 5 mm, Pitch in mm (P): 5.00 Weidmueller, |
| GTIN (EAN) | 4008190279103 | Allen-Bradley, white |
| Qty. | 720 pc(s). | |

WDK 2.5 LD/RT 1D 2R 230

Weidmüller Interface GmbH & Co. KG

Klingenbergstraße 26

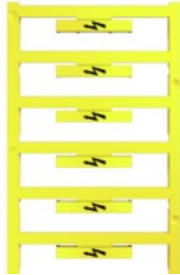
D-32758 Detmold

Germany

www.weidmueller.com

Accessories

With lightning flash



The WAD connector marker is suitable for W-series terminals and for the WEW 35/2 and ZEW 35/2 end brackets. The markers are available as blank markers, with custom printing or standard print with lightning symbol. The WAD MultiCard markers are suitable for labelling with PrintJet CONNECT printers.

For custom printing: Please send us a file of our labeling software M-Print PRO or M-Print PRO Online (without installation) for your labeling specifications.

General ordering data

| | | |
|------------|----------------------------|-------------------------------------------------------------------|
| Type | WAD 5 MC B GE/SW | Version |
| Order No. | 1120450000 | Group markers, Cover, 33.3 x 5 mm, Pitch in mm (P): 5.00 WDU 2.5, |
| GTIN (EAN) | 4032248901272 | WEW 35/2, ZEW 35/2, yellow |
| Qty. | 48 pc(s). | |