

PV 212S0F3CXXV100TA1PA15LWW**Weidmüller Interface GmbH & Co. KG**

Klingenbergstraße 26

D-32758 Detmold

Germany

www.weidmueller.com

**Standard portfolio for 1 MPPT string inverters
Protect and monitor strings in solar parks with
string inverters with 1 MPPT.**

The following PV DC combiner box portfolio is meant to be used with string inverters with one Maximum Power Point Tracker (MPPT) in order to bundle, protect and isolate the number of strings these inverters use. 1 MPPT

General ordering data

| | |
|------------|--|
| Version | Photovoltaics, Assembled enclosure, Combiner Box, 1500 V, With fuse holder, Surge protection II, Cable gland, for wall mounting, Switch disconnect, Landscape, Current monitoring, Voltage monitoring, Temperature monitoring, String Inverter |
| Order No. | 8000115485 |
| Type | PV 212S0F3CXXV100TA1PA15LWW |
| GTIN (EAN) | 4099986757486 |
| Qty. | 1 pc(s). |

PV 212S0F3CXXV100TA1PA15LWW

Weidmüller Interface GmbH & Co. KG

Klingenbergstraße 26

D-32758 Detmold

Germany

www.weidmueller.com

Technical data

Dimensions and weights

| | | | |
|------------|----------|-----------------|-------------|
| Depth | 300 mm | Depth (inches) | 11.811 inch |
| Height | 636 mm | Height (inches) | 25.039 inch |
| Width | 847 mm | Width (inches) | 33.346 inch |
| Net weight | 20,000 g | | |

Temperatures

| | | | |
|---------------------|-----------------|-----------------------|-----------------|
| Ambient temperature | -20°C to +45 °C | Operating temperature | -20°C to +45 °C |
|---------------------|-----------------|-----------------------|-----------------|

DC electrical properties

| | | | |
|--------------------------|------------------------------------|--------------------|----------------------|
| Earthing | Directly at the VPU | Rated voltage | 1,500 V |
| Surge protection DC side | 1500 V type II with remote contact | Switching capacity | 400 A (DC21B 1500 V) |

DC inputs

| | | | |
|---------------------------------|------------------------------------|-------------------------|-----------------|
| Amount of maximum power points | 1 | | |
| Cartridge fuse | 10 x 85 mm | | |
| Connection DC input cable (+) | Screw connection | | |
| Connection DC input cable (-) | Screw connection | | |
| Connection type, DC input cable | Cable gland | | |
| DC Input + & - | Wire connection | Type of connection | M16 Cable gland |
| | Cable entry | Number of cable entries | 24 |
| | | Cable diameter, min. | 5 mm |
| | | Cable diameter, max. | 10 mm |
| Functional earth connector | Cable entry | Number of cable entries | 1 |
| | | Cable diameter, min. | 6 mm |
| | | Cable diameter, max. | 12 mm |
| | Wire connection | Type of connection | M20 Cable gland |
| Fuse | 15 A, 16 A, 20 A, 25 A, 30 A, 32 A | | |
| Fuse | Empty fuse holder | | |
| Fuse type | Empty fuse holder | | |
| Fuse-link standard | gPV (EN 60269-6) | | |
| Fused poles of string | +/- | | |
| Number of DC inputs | 12 | | |
| Position of the fuses | positive and negative inputs | | |

DC outputs

| | | | |
|---|-----------------------------|--------------------------|---------------------|
| Connection type, DC output cable | Screw terminal connectors | | |
| DC Output + & - | Wire connection | Type of connection | M40 Cable gland |
| | | Wire cross-section, min. | 150 mm ² |
| | | Wire cross-section, max. | 400 mm ² |
| DC output cable connection | M10 bolt and nut connection | | |
| Load circuit breaker with auxiliary contact | No | | |
| Number of DC outputs | 2 | | |

PV 212S0F3CXXV100TA1PA15LWW

Weidmüller Interface GmbH & Co. KG

Klingenbergstraße 26

D-32758 Detmold

Germany

www.weidmueller.com

Technical data

DC string monitoring

| | | | |
|--------------------|--------------|------------------------|---|
| Current monitoring | Solar SMS | Monitoring function | Solar SMS, Output voltage, current, temperature |
| Supply | Self-powered | Temperature monitoring | Solar SMS |
| Voltage monitoring | Solar SMS | | |

Housing

| | | | |
|-------------------|------|------------------|---------------|
| Protection degree | IP65 | Type of mounting | Wall mounting |
|-------------------|------|------------------|---------------|

Norms and standards

| | |
|-----------|-------------------------------------|
| Standards | EN 61439-2:2011, IEC 61439-2 ed 3.0 |
|-----------|-------------------------------------|

Guarantee

| | |
|---------------|---------|
| Time interval | 5 years |
|---------------|---------|

Electrical characteristics

| | | | |
|------------------|---------|---------------------------------|-------------|
| Rated DC voltage | 1,500 V | Switching disconnector capacity | IEC 60947-3 |
|------------------|---------|---------------------------------|-------------|

Enclosure

| | | | |
|------------------------|---|-------------------------------|-----------------------------------|
| Connection type string | Internal terminal (with cable gland feed-through) | Cover | Hinged door |
| Enclosure attachment | Fixing lugs | Impact resistance | IK10 in accordance with IEC 62262 |
| Insulating material | Polyester glass-fibre reinforced, Polycarbonate | Switch disconnector execution | switch inside enclosure |
| Type of mounting | Wall mounting | | |

General data

| | | | |
|-----------------------|---|-------------------|------|
| Installation location | Protected outdoor area (>1 km from sea) | Protection degree | IP65 |
| Standards | EN 61439-2:2011, IEC 61439-2 ed 3.0 | | |

Surge protection DC side

| | | | |
|---------------------------------|------------------------------------|-----------|-------------------------------------|
| Short-circuit current I_{SCP} | 20.75 A | Standards | EN 61439-2:2011, IEC 61439-2 ed 3.0 |
| Surge protection DC side | 1500 V type II with remote contact | | |

Classifications

| | | | |
|-------------|-------------|-------------|-------------|
| ETIM 6.0 | EC002928 | ETIM 7.0 | EC002928 |
| ETIM 8.0 | EC003857 | ETIM 9.0 | EC003857 |
| ECLASS 9.0 | 22-57-92-03 | ECLASS 9.1 | 22-57-02-90 |
| ECLASS 10.0 | 22-57-02-90 | ECLASS 11.0 | 22-57-02-92 |
| ECLASS 12.0 | 22-57-02-92 | ECLASS 13.0 | 22-57-02-92 |

PV 212S0F3CXXV100TA1PA15LWW**Weidmüller Interface GmbH & Co. KG**

Klingenbergstraße 26

D-32758 Detmold

Germany

www.weidmueller.com**Technical data****Environmental Product Compliance**

| | |
|------------|--------------------------------------|
| REACH SVHC | Lead 7439-92-1 |
| SCIP | 1d28ada4-1634-4382-8635-45f6353a6574 |

Approvals

Approvals



| | |
|------|---------|
| ROHS | Conform |
|------|---------|

Downloads

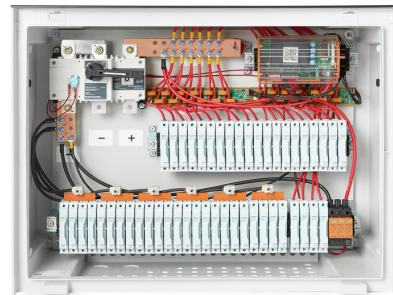
| | |
|---|--|
| Approval/Certificate/Document of Conformity | EU Declaration of Conformity Combiner Boxes monitored |
| Technical Documentation | Mechanical Drawing Electrical Drawing |
| User Documentation | User Manual PV DC Combiner Boxes |
| Catalogues | Catalogues in PDF-format |

PV 212S0F3CXXV100TA1PA15LWW

Weidmüller Interface GmbH & Co. KG
Klingenbergstraße 26
D-32758 Detmold
Germany

www.weidmueller.com

Drawings



PV 212S0F3CXXV100TA1PA15LWW

Weidmüller Interface GmbH & Co. KG
 Klingenbergstraße 26
 D-32758 Detmold
 Germany

www.weidmueller.com

Drawings

Combiner Box Name Description

PV 2 24 S0 FX CXX VX OX TXPX 15 P F ES

PV 1: PV DC L0 Industrial
PV 2: PV DC L1 Industrial
PV 3: PV DC L2 Industrial

Number of inputs (01-36)

S0: Switch-disconnector

S0 → Switch-disconnector (SW)
 S1 → Switch-disconnector with remote disconnection (SW RD)
 S2 → Molded Case Circuit Breaker (MCCB)
 S3 → Motorized switch-disconnector (SW M)
 S4 → Switch-disconnector with Contactor (SW K)
 S5 → No switch-disconnector needed (N/A)

FX: Fuses / Fuseholders position

F0 → Fuses Both Poles
 F1 → Only Positive Fuses
 F2 → Only Negative Fuses
 F3 → Only Fuse Holders
 F4 → Only Fuse holder in positive (+)
 F5 → Only Fuse holder in negative (-)
 FX → No Fuse holders needed (N/A)

CXX: CIL Fuses Type → C 10/15/16/20/25/30/40/50/55/60/63/80 - (Example C20)

NXX: NH Fuses Type → N 40/50/63/80/100/125/160/200/250/315/355/400 - (Example N40)

CXX → N/A, NXX → N/A

VX: SPD Type

V0 → SPD Class II / V1 → SPD Class I+II / V2 → SPD Class I
 VX → No SPD needed (N/A)

OX: Output type
 O0 → No holder needed (N/A)
 O1 → Cable Gland
 O2 → M24
 O3 → M26
 O4 → M28
 O5 → M30

Country / Whole World

Floating: YES (F) / NO

P: Portrait

L: Landscape

10: 1000V

15: 1500V

TX: Monitoring Device

TX → No monitoring (N/A)
 T0 → TC 24V (24V or 1.3kV)
 T1 → TC 24V
 T2 → TC 24V
 T3 → TC 24V
 T4 → TC 24V
 T5 → TC 24V
 T6 → TC 24V
 T7 → TC 24V
 T8 → TC 24V
 T9 → TC 24V
 T10 → TC 24V
 T11 → TC 24V
 T12 → TC 24V
 T13 → TC 24V
 T14 → TC 24V
 T15 → TC 24V
 T16 → TC 24V
 T17 → TC 24V
 T18 → TC 24V
 T19 → TC 24V
 T20 → TC 24V
 T21 → TC 24V
 T22 → TC 24V
 T23 → TC 24V
 T24 → TC 24V
 T25 → TC 24V
 T26 → TC 24V
 T27 → TC 24V
 T28 → TC 24V
 T29 → TC 24V
 T30 → TC 24V
 T31 → TC 24V
 T32 → TC 24V
 T33 → TC 24V
 T34 → TC 24V
 T35 → TC 24V
 T36 → TC 24V
 T37 → TC 24V
 T38 → TC 24V
 T39 → TC 24V
 T40 → TC 24V
 T41 → TC 24V
 T42 → TC 24V
 T43 → TC 24V
 T44 → TC 24V
 T45 → TC 24V
 T46 → TC 24V
 T47 → TC 24V
 T48 → TC 24V
 T49 → TC 24V
 T50 → TC 24V
 T51 → TC 24V
 T52 → TC 24V
 T53 → TC 24V
 T54 → TC 24V
 T55 → TC 24V
 T56 → TC 24V
 T57 → TC 24V
 T58 → TC 24V
 T59 → TC 24V
 T60 → TC 24V
 T61 → TC 24V
 T62 → TC 24V
 T63 → TC 24V
 T64 → TC 24V
 T65 → TC 24V
 T66 → TC 24V
 T67 → TC 24V
 T68 → TC 24V
 T69 → TC 24V
 T70 → TC 24V
 T71 → TC 24V
 T72 → TC 24V
 T73 → TC 24V
 T74 → TC 24V
 T75 → TC 24V
 T76 → TC 24V
 T77 → TC 24V
 T78 → TC 24V
 T79 → TC 24V
 T80 → TC 24V
 T81 → TC 24V
 T82 → TC 24V
 T83 → TC 24V
 T84 → TC 24V
 T85 → TC 24V
 T86 → TC 24V
 T87 → TC 24V
 T88 → TC 24V
 T89 → TC 24V
 T90 → TC 24V
 T91 → TC 24V
 T92 → TC 24V
 T93 → TC 24V
 T94 → TC 24V
 T95 → TC 24V
 T96 → TC 24V
 T97 → TC 24V
 T98 → TC 24V
 T99 → TC 24V

PX: Power Supply for (TX)
 PX → No Power Supply Needed (N/A)
 P0 → Self-Powered (SEI)
 P1 → External Power Supply (PS ACDC)
 P2 → Self-Powered (SEI)

