

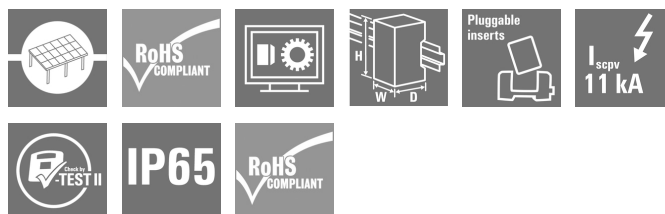
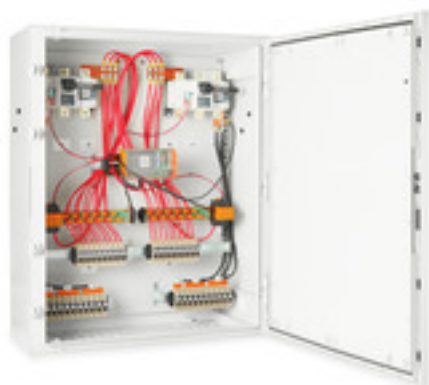
PV 210S5F3CXXV100TA1PA10PWW**Weidmüller Interface GmbH & Co. KG**

Klingenbergstraße 26

D-32758 Detmold

Germany

www.weidmueller.com



PV Next combiner boxes for inverters with 1 to 12 MPP trackers are used to protect the DC side of a photovoltaic system. The combiner boxes protect the inverter against overvoltages and thus comply with the European Directive CLC/TS 51643-32. In addition, these products offer the possibility to protect the system against reverse currents and the possibility to combine strings to save cables during installation.

General ordering data

Version	Photovoltaics, Combiner Box, 1000 V, 2 MPP's, 10 Inputs / 1 Output per MPP, With fuse holder, Surge protection, Switch disconnecter, Current monitoring, Cable gland, Designed for Fronius Tau-ro Eco Inverters
Order No.	8000111138
Type	PV 210S5F3CXXV100TA1PA10PWW
GTIN (EAN)	4099986933637
Qty.	1 pc(s).

PV 210S5F3CXXV100TA1PA10PWW

Weidmüller Interface GmbH & Co. KG

Klingenbergstraße 26

D-32758 Detmold

Germany

www.weidmueller.com

Technical data

Dimensions and weights

Depth	350 mm	Depth (inches)	13.78 inch
Depth with add-on components	350 mm	Height	1,065 mm
Height (inches)	41.929 inch	Width	852 mm
Width (inches)	33.543 inch	Net weight	40,625.594 g

Electrical characteristics

Rated DC voltage	1,000 V
------------------	---------

Enclosure

Connection type string	Internal terminal (with cable gland feed-through)	Enclosure attachment	Fixing lugs
Insulating material	Polyester glass-fibre reinforced, Polycarbonate	Protection class	II
Switch disconnecter execution	switch inside enclosure	Type of mounting	Fixing lugs

General data

Installation location	Protected outdoor area (>1 km from sea)
-----------------------	---

Inputs

Amount of maximum power points	2		
Cartridge fuse	10 x 38 mm		
Fuse type	Empty fuse holder		
Fuse-link standard	gPV (EN 60269-6)		
Max. number of DC inputs	per Maximum Power Point 10 inputs connected in parallel		
Surge protection auxiliary contact	Wire connection	Type of connection	PUSH IN with actuator
		Flexible, max. H05(07) V-K	2.5 mm²
		w. wire end ferrule, DIN 46228 pt 1, max.	2.5 mm²
	Cable entry	Number of cable en-tries	1

Outputs

Max. number of DC outputs	per Maximum Power Point 1 output
---------------------------	----------------------------------

Surge protection DC side

Discharge current I_n (8/20 μ s)	20 kA	Discharge current, max. (8/20 μ s)	40 kA
Lightning test current I_{imp} (10/350 μ s)	6.25 kA	Maximum continuous operating voltage DC UCPV mode +/-, -/PE, +/-PE	1,000 V
PV system voltage, max. U_{cpv}	1,000 V	Requirements class	Type I/II
Short-circuit current I_{SCPv}	162.5 A	Surge protection DC side	1000 V type I + II
Total discharge current I_{total} (8/20 μ s)	50 kA	Total discharge current I_{total} (10/350 μ s)	12.5 kA

PV 210S5F3CXXV100TA1PA10PWW**Weidmüller Interface GmbH & Co. KG**

Klingenbergstraße 26

D-32758 Detmold

Germany

www.weidmueller.com**Technical data****Classifications**

ETIM 6.0	EC002928	ETIM 7.0	EC002928
ETIM 8.0	EC003857	ETIM 9.0	EC003857
ECLASS 9.0	22-57-92-03	ECLASS 9.1	22-57-02-90
ECLASS 10.0	22-57-02-90	ECLASS 11.0	22-57-02-92
ECLASS 12.0	22-57-02-92	ECLASS 13.0	22-57-02-92

Environmental Product Compliance

REACH SVHC	Lead 7439-92-1
SCIP	1d28ada4-1634-4382-8635-45f6353a6574

Important note

Product information	Fuses are not included
---------------------	------------------------

Approvals

ROHS	Conform
------	---------

Downloads

Catalogues	Catalogues in PDF-format
------------	--

PV 210S5F3CXXV100TA1PA10PWW

Weidmüller Interface GmbH & Co. KG
Klingenbergstraße 26
D-32758 Detmold
Germany

www.weidmueller.com

Drawings

