

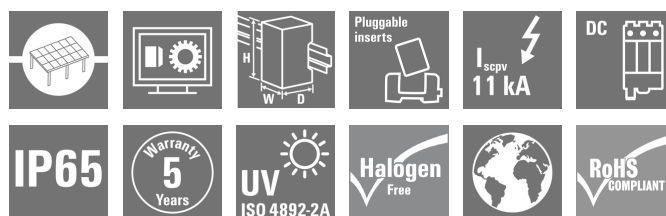
PV 208S0F3CXXV000TXPX15LWW**Weidmüller Interface GmbH & Co. KG**

Klingenbergstraße 26

D-32758 Detmold

Germany

www.weidmueller.com

**Standard portfolio for combiner boxes.****Protect and monitor strings in a solar park.**

Weidmüller has developed a full portfolio of standard PV DC combiner boxes for solar parks. These products intend to cover the most common used solutions for such purposes in an efficient and competitive manner. From 6 up to 32 inputs our Generation X offers a full range of products for monitored and non-monitored combiner boxes allowing our customer to benefit from Weidmüller's experience and commitment to quality. Gen X

General ordering data

Version	Photovoltaics, Assembled enclosure, Combiner Box, 1500 V, With fuse holder, Surge protection II, Cable gland, for wall mounting, Switch disconnect, Landscape, Central Inverter
Order No.	8000081272
Type	PV 208S0F3CXXV000TXPX15LWW
GTIN (EAN)	4064675596127
Qty.	1 pc(s).

PV 208S0F3CXXV000TXPX15LWW

Weidmüller Interface GmbH & Co. KG

Klingenbergstraße 26

D-32758 Detmold

Germany

www.weidmueller.com

Technical data

Dimensions and weights

Depth	300 mm	Depth (inches)	11.811 inch
Height	636 mm	Height (inches)	25.039 inch
Width	847 mm	Width (inches)	33.346 inch
Net weight	16,289.649 g		

Temperatures

Ambient temperature	-20°C to +45 °C	Operating temperature	-20°C to +45 °C
---------------------	-----------------	-----------------------	-----------------

DC electrical properties

Earthing	Directly at the VPU	Rated voltage	1,500 V
Surge protection DC side	1500 V type II without remote contact	Switching capacity	400 A (DC21B 1500 V)

DC inputs

Cartridge fuse	22 x 58 mm		
Connection DC input cable (+)	Screw connection		
Connection DC input cable (-)	Screw connection		
Connection type, DC input cable	Cable gland		
DC Input + & -	Wire connection	Type of connection	M16 Cable gland
	Cable entry	Number of cable entries	16
		Cable diameter, min.	5 mm
		Cable diameter, max.	10 mm
Functional earth connector	Cable entry	Number of cable entries	1
		Cable diameter, min.	6 mm
		Cable diameter, max.	12 mm
	Wire connection	Type of connection	M20 Cable gland
Fuse	30 A, 35 A, 40 A, 50 A, 60 A, 70 A, 75 A		
Fuse	Empty fuse holder		
Fuse type	Empty fuse holder		
Fuse-link standard	gPV (EN 60269-6)		
Fused poles of string	+/-		
Number of DC inputs	8		
Position of the fuses	positive and negative inputs		

DC outputs

DC Output + & -	Wire connection	Type of connection	M40 Cable gland
		Wire cross-section, min.	150 mm ²
		Wire cross-section, max.	300 mm ²
DC output cable connection	M12 bolt and nut connection		
Load circuit breaker with auxiliary contact	No		
Number of DC outputs	2		

DC string monitoring

Monitoring function	Non monitored
---------------------	---------------

PV 208S0F3CXXV000TXPX15LWW
Weidmüller Interface GmbH & Co. KG

Klingenbergstraße 26

D-32758 Detmold

Germany

www.weidmueller.com
Technical data
Housing

Protection degree	IP65	Type of mounting	Wall mounting
-------------------	------	------------------	---------------

Norms and standards

Standards	EN 61439-2, IEC 61439-2 ed 3.0
-----------	--------------------------------

Guarantee

Time interval	5 years
---------------	---------

Electrical characteristics

Rated DC voltage	1,500 V	Switching disconnecter capacity	IEC 60947-3
------------------	---------	---------------------------------	-------------

Enclosure

Connection type string	Internal terminal (with cable gland feed-through)	Cover	Hinged door
Enclosure attachment	Fixing lugs	Impact resistance	IK 10 in accordance with IEC 62262
Insulating material	Polyester glass-fibre reinforced, Polycarbonate	Switch disconnecter execution	switch inside enclosure
Type of mounting	Wall mounting		

General data

Installation location	Protected outdoor area (>1 km from sea)	Protection degree	IP65
Standards	EN 61439-2, IEC 61439-2 ed 3.0		

Surge protection DC side

Short-circuit current I_{SCP}	32 A	Standards	EN 61439-2, IEC 61439-2 ed 3.0
Surge protection DC side	1500 V type II without remote contact		

Classifications

ETIM 6.0	EC002928	ETIM 7.0	EC002928
ETIM 8.0	EC003857	ETIM 9.0	EC003857
ECLASS 9.0	22-57-92-03	ECLASS 9.1	22-57-02-90
ECLASS 10.0	22-57-02-90	ECLASS 11.0	22-57-02-92
ECLASS 12.0	22-57-02-92	ECLASS 13.0	22-57-02-92

Environmental Product Compliance

REACH SVHC	/
------------	---

PV 208S0F3CXXV000TXPX15LWW**Weidmüller Interface GmbH & Co. KG**

Klingenbergstraße 26

D-32758 Detmold

Germany

www.weidmueller.com**Technical data****Approvals**

Approvals



ROHS

Conform

DownloadsApproval/Certificate/Document of Con-
formity[EU Declaration of Conformity Combiner Boxes non monitored](#)

Engineering Data

[Electrical Drawing](#)[Thermal Report](#)

Technical Documentation

[Mechanical Drawing](#)

User Documentation

[User Manual PV DC Combiner Boxes](#)

Catalogues

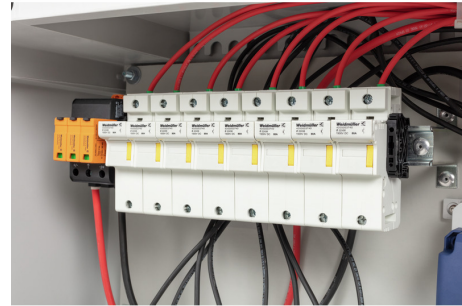
[Catalogues in PDF-format](#)

PV 208S0F3CXXV000TXPX15LWW

Weidmüller Interface GmbH & Co. KG
Klingenbergstraße 26
D-32758 Detmold
Germany

www.weidmueller.com

Drawings



PV 208S0F3CXXV000TXPX15LWW

Weidmüller Interface GmbH & Co. KG
Klingenbergstraße 26
D-32758 Detmold
Germany

www.weidmueller.com

Drawings**Combiner Box Name Description**

PV 2 24 S0 FX CXX VX OX TXPX 15 P F ES

PV 1: PV DC L0 Industrial
PV 2: PV DC L1 Industrial
PV 3: PV DC L2 Industrial

Number of inputs (01-36)

S0: Switch-disconnector

S0 → Switch-disconnector (SW)
S1 → Switch-disconnector with remote disconnection (SW RD)
S2 → Molded Case Circuit Breaker (MCCB)
S3 → Motorized switch-disconnector (SW M)
S4 → Switch-disconnector with Contactor (SW K)
S5 → No switch-disconnector needed (N/A)

FX: Fuses / Fuseholders position

F0 → Fuses Both Poles
F1 → Only Positive Fuses
F2 → Only Negative Fuses
F3 → Only Fuse Holders
F4 → Only Fuse holder in positive (+)
F5 → Only Fuse holder in negative (-)
FX → No Fuse holders needed (N/A)

CXX: CIL Fuses Type → C 10/15/16/20/25/30/40/50/55/60/63/80 - (Example C20)

NXX: NH Fuses Type → N 40/50/63/80/100/125/160/200/250/315/355/400 - (Example N40)

CXX → N/A, NXX → N/A

VX: SPD Type

V0 → SPD Class II / V1 → SPD Class I+II / V2 → SPD Class I
VX → No SPD needed (N/A)

OX: Output type

O0 → No holder needed (N/A)
O1 → Cable Gland
O2 → M20x1.5
O3 → M24x1.5
O4 → M30x1.5

Country / Whole World

Floating: YES (F) / NO

P: Portrait

L: Landscape

10: 1000V

15: 1500V

TX: Monitoring Device

TX → No monitoring (N/A)
T0 → TC 24V (24V or 1.3kV)
T1 → TC 24V
T2 → TC 24V
T3 → TC 24V
T4 → TC 24V
T5 → TC 24V
T6 → TC 24V
T7 → TC 24V
T8 → TC 24V
T9 → TC 24V

PX: Power Supply for (TX)

PX → No Power Supply Needed (N/A)
P0 → Self-Powered (SEI)
P1 → External Power Supply (PS ACDC)
P2 → Self-Powered (SEI)
P3 → Self-Powered (SEI)
P4 → Self-Powered (SEI)
P5 → Self-Powered (SEI)
P6 → Self-Powered (SEI)
P7 → Self-Powered (SEI)
P8 → Self-Powered (SEI)
P9 → Self-Powered (SEI)