

PV 224S0F3CXXV000TXPX15LWW**Weidmüller Interface GmbH & Co. KG**

Klingenbergstraße 26

D-32758 Detmold

Germany

www.weidmueller.com**Standard portfolio for combiner boxes.****Protect and monitor strings in a solar park.**

Weidmüller has developed a full portfolio of standard PV DC combiner boxes for solar parks. These products intend to cover the most common used solutions for such purposes in an efficient and competitive manner. From 6 up to 32 inputs our Generation X offers a full range of products for monitored and non-monitored combiner boxes allowing our customer to benefit from Weidmüller's experience and commitment to quality. Gen X

General ordering data

Version	Photovoltaics, Assembled enclosure, Combiner Box, 1500 V, With fuse holder, Surge protection II, Cable gland, for wall mounting, Switch disconnect, Landscape, Central Inverter
Order No.	8000078884
Type	PV 224S0F3CXXV000TXPX15LWW
GTIN (EAN)	4064675468936
Qty.	1 pc(s).

PV 224S0F3CXXV000TXPX15LWW

Weidmüller Interface GmbH & Co. KG

Klingenbergstraße 26

D-32758 Detmold

Germany

www.weidmueller.com

Technical data

Dimensions and weights

Depth	300 mm	Depth (inches)	11.811 inch
Height	636 mm	Height (inches)	25.039 inch
Width	847 mm	Width (inches)	33.346 inch
Net weight	13,382.82 g		

Temperatures

Ambient temperature	-20°C to +45 °C	Operating temperature	-20°C to +45 °C
---------------------	-----------------	-----------------------	-----------------

DC electrical properties

Earthing	Directly at the VPU	Rated voltage	1,500 V
Surge protection DC side	1500 V type II without remote contact	Switching capacity	400 A (DC21B 1500 V)

DC inputs

Cartridge fuse	10 x 85 mm		
Connection DC input cable (+)	Screw connection		
Connection DC input cable (-)	Screw connection		
Connection type, DC input cable	Cable gland		
DC Input + & -	Wire connection	Type of connection	M16 Cable gland
	Cable entry	Number of cable entries	48
		Cable diameter, min.	5 mm
		Cable diameter, max.	10 mm
Functional earth connector	Cable entry	Number of cable entries	1
		Cable diameter, min.	6 mm
		Cable diameter, max.	12 mm
	Wire connection	Type of connection	M20 Cable gland
Fuse	15 A, 16 A, 20 A, 25 A, 30 A, 32 A		
Fuse	Empty fuse holder		
Fuse type	Empty fuse holder		
Fuse-link standard	gPV (EN 60269-6)		
Fused poles of string	+/-		
Number of DC inputs	24		
Position of the fuses	positive and negative inputs		

DC outputs

DC Output + & -	Wire connection	Type of connection	M40 Cable gland
		Wire cross-section, min.	150 mm ²
		Wire cross-section, max.	300 mm ²
DC output cable connection	M10 bolt and nut connection		
Load circuit breaker with auxiliary contact	No		
Number of DC outputs	2		

DC string monitoring

Monitoring function	Non monitored
---------------------	---------------

PV 224S0F3CXXV000TXPX15LWW**Weidmüller Interface GmbH & Co. KG**

Klingenbergstraße 26

D-32758 Detmold

Germany

www.weidmueller.com

Technical data**Housing**

Protection degree	IP65	Type of mounting	Wall mounting
-------------------	------	------------------	---------------

Norms and standards

Standards	EN 61439-2:2011, IEC 61439-2 ed 3.0
-----------	-------------------------------------

Guarantee

Time interval	5 years
---------------	---------

Electrical characteristics

Rated DC voltage	1,500 V	Switching disconnecter capacity	IEC 60947-3
------------------	---------	---------------------------------	-------------

Enclosure

Connection type string	Internal terminal (with cable gland feed-through)	Cover	Hinged door
Enclosure attachment	Fixing lugs	Impact resistance	IK 10 in accordance with IEC 62262
Insulating material	Polyester glass-fibre reinforced, Polycarbonate	Switch disconnecter execution	switch inside enclosure
Type of mounting	Wall mounting		

General data

Installation location	Protected outdoor area (>1 km from sea)	Protection degree	IP65
Standards	EN 61439-2:2011, IEC 61439-2 ed 3.0		

Surge protection DC side

Short-circuit current I_{SCP}	14 A	Standards	EN 61439-2:2011, IEC 61439-2 ed 3.0
Surge protection DC side	1500 V type II without remote contact		

Classifications

ETIM 6.0	EC002928	ETIM 7.0	EC002928
ETIM 8.0	EC003857	ETIM 9.0	EC003857
ECLASS 9.0	22-57-92-03	ECLASS 9.1	22-57-02-90
ECLASS 10.0	22-57-02-90	ECLASS 11.0	22-57-02-92
ECLASS 12.0	22-57-02-92	ECLASS 13.0	22-57-02-92

Environmental Product Compliance

REACH SVHC	/
------------	---

PV 224S0F3CXXV000TXPX15LWW**Weidmüller Interface GmbH & Co. KG**

Klingenbergstraße 26

D-32758 Detmold

Germany

www.weidmueller.com**Technical data****Approvals**

Approvals



ROHS

Conform

DownloadsApproval/Certificate/Document of Con-
formity[EU Declaration of Conformity Combiner Boxes non monitored](#)

Engineering Data

[Electrical Drawing](#)[Thermal Report](#)[CAD data – STEP](#)

Technical Documentation

[Mechanical Drawing](#)

User Documentation

[User Manual PV DC Combiner Boxes](#)

Catalogues

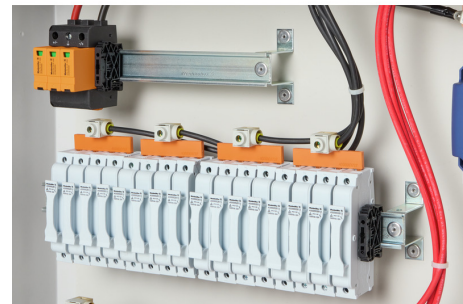
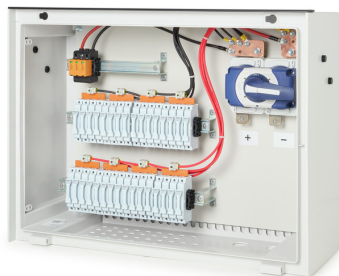
[Catalogues in PDF-format](#)

PV 224S0F3CXXV000TXPX15LWW

Weidmüller Interface GmbH & Co. KG
Klingenbergstraße 26
D-32758 Detmold
Germany

www.weidmueller.com

Drawings



PV 224S0F3CXXV000TXPX15LWW

Weidmüller Interface GmbH & Co. KG
Klingenbergstraße 26
D-32758 Detmold
Germany

www.weidmueller.com

Drawings**Combiner Box Name Description**

PV 2 24 S0 FX CXX VX OX TXPX 15 P F ES

PV 1: PV DC L0 Industrial
PV 2: PV DC L1 Industrial
PV 3: PV DC L2 Industrial

Number of inputs (01-36)

S0: Switch-disconnector

S0 → Switch-disconnector (SW)
S1 → Switch-disconnector with remote disconnection (SW RD)
S2 → Molded Case Circuit Breaker (MCCB)
S3 → Motorized switch-disconnector (SW M)
S4 → Switch-disconnector with Contactor (SW K)
S5 → No switch-disconnector needed (N/A)

FX: Fuses / Fuseholders position

F0 → Fuses, Both Poles
F1 → Only Positive Fuses
F2 → Only Negative Fuses
F3 → Only Fuse Holders
F4 → Only Fuse holder in positive (+)
F5 → Only Fuse holder in negative (-)
FX → No Fuse holders needed (N/A)

CXX: CIL Fuses Type → C 10/15/16/20/25/30/40/50/55/60/63/80 - (Example C20)

NXX: NH Fuses Type → N 40/50/63/80/100/125/160/200/250/315/355/400 - (Example N40)

CXX → N/A, NXX → N/A

VX: SPD Type

V0 → SPD Class II / V1 → SPD Class I+II / V2 → SPD Class I
VX → No SPD needed (N/A)

OX: Output type

O0 → No holder needed (N/A)
O1 → Cable Gland
O2 → M20x1.5
O3 → M24x1.5
O4 → M30x1.5

Country / Whole World

Floating: YES (F) / NO

P: Portrait

L: Landscape

10: 1000V

15: 1500V

TX: Monitoring Device

TX → No monitoring (N/A)
T0 → TC 24V (24V or 1.3kV)
T1 → TC 24V
T2 → TC 24V
T3 → TC 24V
T4 → TC 24V

T5: Forcibly

T6: Forcibly

T7: Forcibly

T8: Forcibly

T9: Forcibly

T10: Forcibly

T11: Forcibly

T12: Forcibly

T13: Forcibly

T14: Forcibly

T15: Forcibly

T16: Forcibly

T17: Forcibly

T18: Forcibly

T19: Forcibly

T20: Forcibly

T21: Forcibly

T22: Forcibly

T23: Forcibly

T24: Forcibly

T25: Forcibly

T26: Forcibly

T27: Forcibly

T28: Forcibly

T29: Forcibly

T30: Forcibly

T31: Forcibly

T32: Forcibly

T33: Forcibly

T34: Forcibly

T35: Forcibly

T36: Forcibly

T37: Forcibly

T38: Forcibly

T39: Forcibly

T40: Forcibly

T41: Forcibly

T42: Forcibly

T43: Forcibly

T44: Forcibly

T45: Forcibly

T46: Forcibly

T47: Forcibly

T48: Forcibly

T49: Forcibly

T50: Forcibly

T51: Forcibly

T52: Forcibly

T53: Forcibly

T54: Forcibly

T55: Forcibly

T56: Forcibly

T57: Forcibly

T58: Forcibly

T59: Forcibly

T60: Forcibly

T61: Forcibly

T62: Forcibly

T63: Forcibly

T64: Forcibly

T65: Forcibly

T66: Forcibly

T67: Forcibly

T68: Forcibly

T69: Forcibly

T70: Forcibly

T71: Forcibly

T72: Forcibly

T73: Forcibly

T74: Forcibly

T75: Forcibly

T76: Forcibly

T77: Forcibly

T78: Forcibly

T79: Forcibly

T80: Forcibly

T81: Forcibly

T82: Forcibly

T83: Forcibly

T84: Forcibly

T85: Forcibly

T86: Forcibly

T87: Forcibly

T88: Forcibly

T89: Forcibly

T90: Forcibly

T91: Forcibly

T92: Forcibly

T93: Forcibly

T94: Forcibly

T95: Forcibly

T96: Forcibly

T97: Forcibly

T98: Forcibly

T99: Forcibly

T100: Forcibly

T101: Forcibly

T102: Forcibly

T103: Forcibly

T104: Forcibly

T105: Forcibly

T106: Forcibly

T107: Forcibly

T108: Forcibly

T109: Forcibly

T110: Forcibly

T111: Forcibly

T112: Forcibly

T113: Forcibly

T114: Forcibly

T115: Forcibly

T116: Forcibly

T117: Forcibly

T118: Forcibly

T119: Forcibly

T120: Forcibly

T121: Forcibly

T122: Forcibly

T123: Forcibly

T124: Forcibly

T125: Forcibly

T126: Forcibly

T127: Forcibly

T128: Forcibly

T129: Forcibly

T130: Forcibly

T131: Forcibly

T132: Forcibly

T133: Forcibly

T134: Forcibly

T135: Forcibly

T136: Forcibly

T137: Forcibly

T138: Forcibly

T139: Forcibly

T140: Forcibly

T141: Forcibly

T142: Forcibly

T143: Forcibly

T144: Forcibly

T145: Forcibly

T146: Forcibly

T147: Forcibly

T148: Forcibly

T149: Forcibly

T150: Forcibly

T151: Forcibly

T152: Forcibly

T153: Forcibly

T154: Forcibly

T155: Forcibly

T156: Forcibly

T157: Forcibly

T158: Forcibly

T159: Forcibly

T160: Forcibly

T161: Forcibly

T162: Forcibly

T163: Forcibly

T164: Forcibly

T165: Forcibly

T166: Forcibly

T167: Forcibly

T168: Forcibly

T169: Forcibly

T170: Forcibly

T171: Forcibly

T172: Forcibly

T173: Forcibly

T174: Forcibly

T175: Forcibly

T176: Forcibly

T177: Forcibly

T178: Forcibly

T179: Forcibly

T180: Forcibly

T181: Forcibly

T182: Forcibly

T183: Forcibly

T184: Forcibly

T185: Forcibly

T186: Forcibly

T187: Forcibly

T188: Forcibly

T189: Forcibly

T190: Forcibly

T191: Forcibly

T192: Forcibly

T193: Forcibly

T194: Forcibly

T195: Forcibly

T196: Forcibly

T197: Forcibly

T198: Forcibly

T199: Forcibly

T200: Forcibly

T201: Forcibly

T202: Forcibly

T203: Forcibly

T204: Forcibly

T205: Forcibly

T206: Forcibly

T207: Forcibly

T208: Forcibly

T209: Forcibly

T210: Forcibly

T211: Forcibly

T212: Forcibly

T213: Forcibly

T214: Forcibly

T215: Forcibly

T216: Forcibly

T217: Forcibly

T218: Forcibly

T219: Forcibly

T220: Forcibly

T221: Forcibly

T222: Forcibly

T223: Forcibly

T224: Forcibly

T225: Forcibly

T226: Forcibly

T227: Forcibly

T228: Forcibly

T229: Forcibly

T230: Forcibly

T231: Forcibly

T232: Forcibly

T233: Forcibly

T234: Forcibly

T235: Forcibly

T236: Forcibly

T237: Forcibly

T238: Forcibly

T239: Forcibly

T240: Forcibly

T241: Forcibly

T242: Forcibly

T243: Forcibly

T244: Forcibly