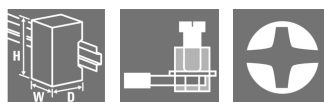


ACT20P-RTI-2AO-S**Weidmüller Interface GmbH & Co. KG**

Klingenbergstraße 26

D-32758 Detmold

Germany

www.weidmueller.com**Similar to illustration****ACT20P: The flexible solution**

- Precise and highly functional signal converters
- Release levers simplify handling

General ordering data

Version	Signal duplicator/isolator, Input : Temperature, PT100, Output : 2 x 0(4) - 20 mA
Order No.	7760054236
Type	ACT20P-RTI-2AO-S
GTIN (EAN)	6944169696442
Qty.	1 pc(s).

ACT20P-RTI-2AO-S**Weidmüller Interface GmbH & Co. KG**

Klingenbergstraße 26

D-32758 Detmold

Germany

www.weidmueller.com

Technical data**Dimensions and weights**

Depth	114 mm	Depth (inches)	4.488 inch
Height	117 mm	Height (inches)	4.606 inch
Width	12.5 mm	Width (inches)	0.492 inch
Net weight	115 g		

Temperatures

Storage temperature	-40 °C...85 °C	Operating temperature	-20 °C...60 °C
Humidity	5...95 %, no condensation		

Input

Line resistance in measuring circuit	≤ 50 Ω	Number of inputs	1
Sensor	PT100 (3 wire), Cu50, Cu100	Temperature input range	Configurable, PT100: -200...+850 °C, min. mea- surement range 10°C (RTD)

Output

Load impedance current	per channel, ≤ 300 Ω	Number of outputs	2
Output current	Adjustable, 2 x 0 (4)...20 mA	Type	active, connected control must be passive
Wire break detection	Yes, Output value: 22 mA		

General data

Accuracy	0.2 °C / 0.1% of end value	Configuration	With free software ACT20P TOOL PACK, Requires configuration adapter 8978580000 CBX200 USB, + 2907490000 ADAPTER CBX200 - MINI USB
Current consumption	<65 mA @ I _{OUT} = 20 mA	Galvanic isolation	between input / output / supply
Power consumption	ca. 1.5 W	Protection degree	IP20
Rail	TS 35	Step response time	≤1s
Temperature coefficient	≤ 100 ppm/K	Voltage supply	24 V DC ± 20 %

Insulation coordination

EMC standards	EN 61326-1	Galvanic isolation	between input / output / supply
Impulse withstand voltage	4 kV (1.2/50 μs)	Insulation voltage	2 kV inputs / outputs / power supply
Pollution severity	2	Rated voltage	300 V
Surge voltage category	III	Test voltage	0.3 kV

Connection data

Type of connection	Screw connection	Tightening torque, max.	0.6 Nm
Clamping range, rated connection	2.5 mm ²	Clamping range, min.	0.5 mm ²
Clamping range, max.	2.5 mm ²	Wire connection cross section AWG, min.	AWG 30
Wire connection cross section AWG, max.	AWG 14		

Creation date July 2, 2024 11:06:05 PM CEST

ACT20P-RTI-2AO-S**Weidmüller Interface GmbH & Co. KG**

Klingenbergstraße 26

D-32758 Detmold

Germany

www.weidmueller.com**Technical data****Classifications**

ETIM 6.0	EC002919	ETIM 7.0	EC002919
ETIM 8.0	EC002919	ETIM 9.0	EC002919
ECLASS 9.0	27-21-01-29	ECLASS 9.1	27-21-01-29
ECLASS 10.0	27-21-01-29	ECLASS 11.0	27-21-01-29
ECLASS 12.0	27-21-01-29	ECLASS 13.0	27-21-01-29

Environmental Product Compliance

REACH SVHC	Lead 7439-92-1
SCIP	2f6dd957-421a-46db-a0c2-cf1609156924

Approvals

Approvals



ROHS	Conform
------	---------

Downloads

Approval/Certificate/Document of Conformity	Declaration of Conformity
Engineering Data	CAD data – STEP
Software	ACT20P TOOL PACK version 2.3
User Documentation	instruction sheet
Catalogues	Catalogues in PDF-format

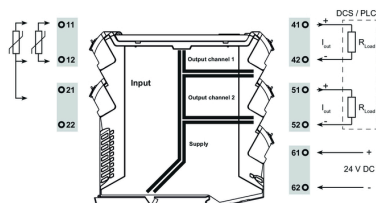
ACT20P-RTI-2AO-S

Weidmüller Interface GmbH & Co. KG
Klingenbergstraße 26
D-32758 Detmold
Germany

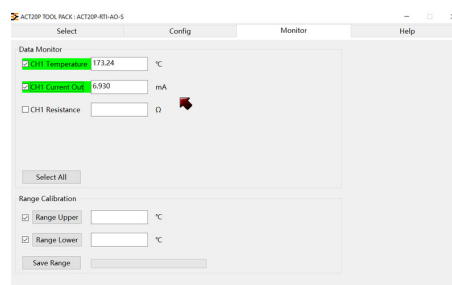
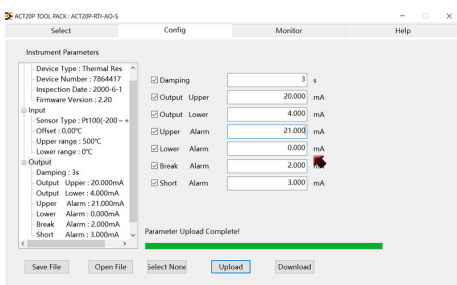
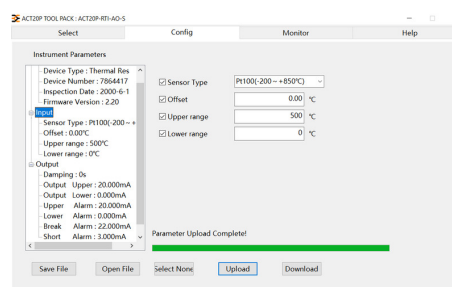
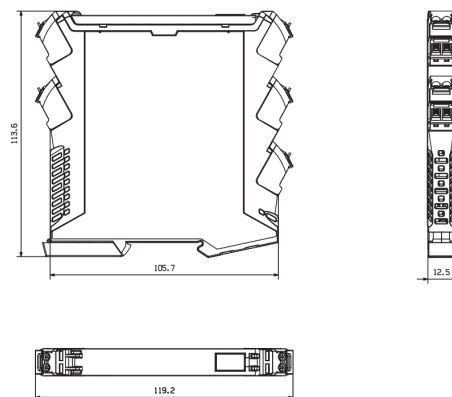
www.weidmueller.com

Drawings

Connection diagram



Dimensioned drawing



ACT20P-RTI-2AO-S**Weidmüller Interface GmbH & Co. KG**

Klingenbergstraße 26

D-32758 Detmold

Germany

www.weidmueller.com**Accessories****Blank**

ESG is the tried-and-tested marker in MultiCard format for use on many well-known electrical devices. The result is high-quality device marking with a high-contrast appearance.

Various types are available for devices from manufacturers like Siemens, ABB, Beckhoff etc.

Advantages at a glance:

- Tags for universal usage, self-adhesive or clip-on tags, depending on type
- For aligned equipment, e.g. circuit breakers, we supply ESG markers for clipping onto tag rails
- Individual laser-quality printing according to specifications

For custom printing: Please send us a file of our labeling software M-Print PRO or M-Print PRO Online (without installation) for your labeling specifications.

General ordering data

Type	ESG 6.6/20 BHZ 5.00/04	Version
Order No.	1082540000	ESG, Device markers x 20 mm, PA 66, Colour: white
GTIN (EAN)	4032248845439	
Qty.	200 pc(s).	

ACT20P-RTI-2AO-S**Weidmüller Interface GmbH & Co. KG**

Klingenbergstraße 26

D-32758 Detmold

Germany

www.weidmueller.com**Accessories****Blank**

ESG is the tried-and-tested marker in MultiCard format for use on many well-known electrical devices. The result is high-quality device marking with a high-contrast appearance.

Various types are available for devices from manufacturers like Siemens, ABB, Beckhoff etc.

Advantages at a glance:

- Tags for universal usage, self-adhesive or clip-on tags, depending on type
- For aligned equipment, e.g. circuit breakers, we supply ESG markers for clipping onto tag rails
- Individual laser-quality printing according to specifications

For custom printing: Please send us a file of our labeling software M-Print PRO or M-Print PRO Online (without installation) for your labeling specifications.

General ordering data

Type	ESG 8/13.5/43.3 SAI AU	Version
Order No.	1912130000	ESG, Device markers x 13.5 mm, PA 66, Colour: Transparent
GTIN (EAN)	4032248541164	
Qty.	5 pc(s).	

Configuration interfaces**General ordering data**

Type	CBX200 USB
Order No.	8978580000
GTIN (EAN)	4032248813759
Qty.	1 pc(s).

Type	ADAPTER CBX200 - MINI U ...
Order No.	2907490000
GTIN (EAN)	4099986188617
Qty.	1 pc(s).

ACT20P-RTI-2AO-S

Weidmüller Interface GmbH & Co. KG
Klingenbergstraße 26
D-32758 Detmold
Germany

www.weidmueller.com

Drawings

