

EM122-RTU-2P**Weidmüller Interface GmbH & Co. KG**

Klingenbergstraße 26

D-32758 Detmold

Germany

www.weidmueller.com

Energy meters - BasicLine

Core functions of energy data acquisition

The BasicLine devices measure power characteristics of single-phase or three-phase loads.

For this purpose, basic values are provided to make the energy demand of a system transparent.

The essential values are displayed directly on the unit and communicated via a network.

Our devices are suitable either for mounting on top hat rails or in the front panel.

By focusing on core functions, the BasicLine devices have a very good cost-benefit ratio.

General ordering data

Version	Power measurement/display for 1-, 3-phase mains, 100 A, direct measurement, pulse output, Modbus RTU
Order No.	7760051003
Type	EM122-RTU-2P
GTIN (EAN)	6944169818196
Qty.	1 pc(s).

EM122-RTU-2P

Weidmüller Interface GmbH & Co. KG

Klingenbergstraße 26

D-32758 Detmold

Germany

www.weidmueller.com

Technical data

Dimensions and weights

Depth	66 mm	Depth (inches)	2.598 inch
Height	100 mm	Height (inches)	3.937 inch
Width	72 mm	Width (inches)	2.835 inch
Net weight	350 g		

Temperatures

Storage temperature	-40 °C...80 °C	Operating temperature	-25 °C...55 °C
Humidity	0...90 % (no condensation)		

Measuring current input

AC input cable connection	Screw connection	Current-measuring channels	3
Max. current	100 A	Measuring accuracy for current	0.5 %
Rated current	10 A		

Measuring voltage input

Four-wire system	Yes	Frequency range, max.	60 Hz
Frequency range, min.		Low voltage network	1 phase 2 wire (L + N), 3 phase 3 wire (L1 + L2 + L3), 3 phase 4 wire (L1 + L2 + L3 + N)
	50 Hz		
Measurement range, voltage L-L, AC	240...480 V	Measurement range, voltage L-N, AC	176...276 V
Measuring accuracy for voltage	0.5 %	Three-wire system	Yes
Voltage type	AC		

Communication

Addressing	1 - 247	Baud rate	9600/19200/38400 bit/s
Communication	Bi-directional	Parity	none, even, odd
Stop bits	1, 2	Interface	RS485
Protocol	Modbus RTU		

Inputs/outputs

Digital output configurable	Yes	Number of pulse outputs	2
-----------------------------	-----	-------------------------	---

Measurement data recording

Update interval register	100 ms	Software	EM configuration tools
--------------------------	--------	----------	------------------------

EM122-RTU-2P

Weidmüller Interface GmbH & Co. KG

Klingenbergstraße 26

D-32758 Detmold

Germany

www.weidmueller.com

Technical data

Technical data

Display		Display value	Voltage, current measured value, Apparent power, Reactive power, Power factor, Frequency, Import / export active power demand, Total import / export active energy, Total import / export reactive energy, Total system power demand
	LCD		
Max. current	100 A	Pollution severity	2
Power factor input	1 %	Protection degree	IP51
Rated current	10 A	Type of mounting	DIN rail
Version	Power measurement/display for 1-, 3-phase mains, 100 A, direct measurement, pulse output,, Modbus RTU	Measurement range, voltage L-N, AC	176...276 V
Measurement range, voltage L-L, AC	240...480 V	Surge voltage category	III
Three-wire system	Yes	Four-wire system	Yes
Sampling frequency 50/60 Hz	4.1 kHz	Continuous measurements	Yes
Measurement result per second	100 ms	Current-measuring channels	3
Measuring accuracy for voltage	0.5 %	Measuring accuracy for current	0.5 %
Measurement accuracy for active energy (kWh, .../5 A)	Class 0.5		

Insulation coordination

Impulse withstand voltage	6 kV (1.2/50 µs)	Insulation voltage input or output/supply	4 kV _{eff} / 1 min.
Pollution severity	2	Surge voltage category	III

Connection data

Stripping length	8 mm	Type of connection	Screw connection
Wire connection cross section, finely stranded, min.	0.5 mm ²	Wire connection cross section, finely stranded, max.	2 mm ²
Wire connection cross section, finely stranded, two clampable wires, min.	2.5 mm ²	Wire cross-section, finely stranded, two clampable wires, max.	25 mm ²

Classifications

ETIM 6.0	EC002301	ETIM 7.0	EC002301
ETIM 8.0	EC002301	ETIM 9.0	EC002301
ECLASS 9.0	27-14-23-30	ECLASS 9.1	27-21-03-01
ECLASS 10.0	27-14-23-30	ECLASS 11.0	27-14-23-30
ECLASS 12.0	27-14-23-30	ECLASS 13.0	27-14-23-30

Environmental Product Compliance

REACH SVHC	/
------------	---

EM122-RTU-2P

Weidmüller Interface GmbH & Co. KG

Klingenbergstraße 26

D-32758 Detmold

Germany

www.weidmueller.com

Technical data

Approvals

Approvals



ROHS

Conform

Downloads

Approval/Certificate/Document of Conformity

[Declaration of Conformity](#)

Engineering Data

[CAD data – STEP](#)

Software

[EM configuration tools](#)[Device description – Device description – MODBUS address list](#)

User Documentation

[Manual EM configuration tools Chinese](#)[Manual EM configuration tools English](#)[Manual EM122 Chinese](#)[Manual EM122 English](#)

Catalogues

[Catalogues in PDF-format](#)

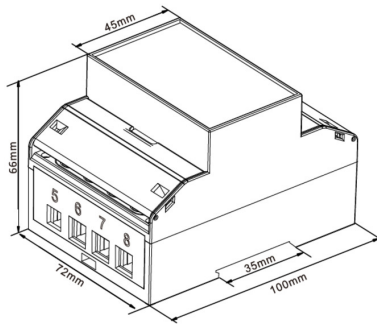
EM122-RTU-2P

Weidmüller Interface GmbH & Co. KG
Klingenbergstraße 26
D-32758 Detmold
Germany

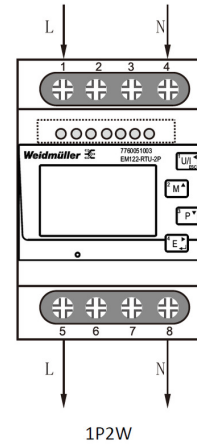
www.weidmueller.com

Drawings

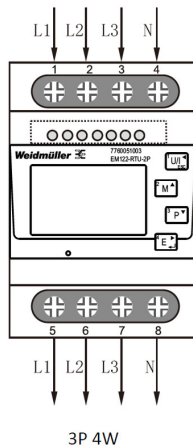
Dimensioned drawing



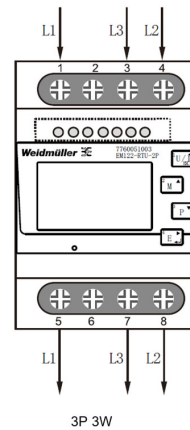
Wiring example



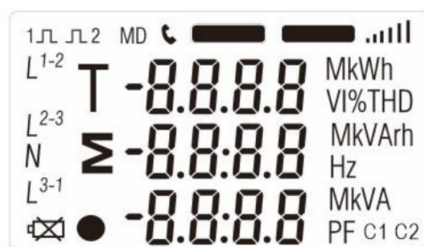
Wiring example



Wiring example



Layout



Full screen