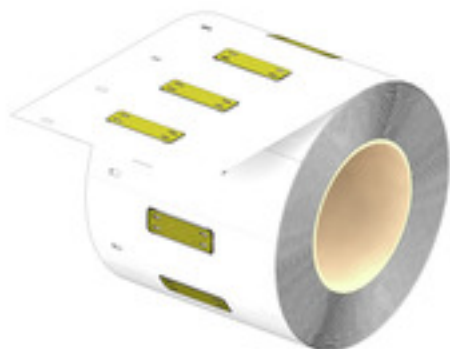


**SFX-M 12/40-5 LRP AL GE****Weidmüller Interface GmbH & Co. KG**

Klingenbergstraße 26

D-32758 Detmold

Germany

[www.weidmueller.com](http://www.weidmueller.com)**General ordering data**

|            |   |
|------------|---|
| Version    | MetalliCard, Conductor and cable markers, 7 - 40 mm, 40 x 12 mm, yellow |
| Order No.  | <a href="#">2863770000</a>  |
| Type       | SFX-M 12/40-5 LRP AL GE   |
| GTIN (EAN) | 4064675597308   |
| Qty.       | 500 pc(s).  |

**SFX-M 12/40-5 LRP AL GE****Weidmüller Interface GmbH & Co. KG**

Klingenbergstraße 26

D-32758 Detmold

Germany

www.weidmueller.com

**Technical data****Dimensions and weights**

|            |         |                 |            |
|------------|---------|-----------------|------------|
| Depth      | 0.8 mm  | Depth (inches)  | 0.031 inch |
| Height     | 40 mm   | Height (inches) | 1.575 inch |
| Width      | 12 mm   | Width (inches)  | 0.472 inch |
| Net weight | 0.853 g |                 |            |

**Temperatures**

|                             |              |
|-----------------------------|--------------|
| Operating temperature range | -55...130 °C |
|-----------------------------|--------------|

**General data**

|                                      |   |             |
|--------------------------------------|---|-------------|
| Colour                               | yellow                                      |             |
| Material                             | Anodized aluminium                          |             |
| Number of markers per combination    | 1 MetalliCard = Conductor and cable markers |             |
| Number of markers per packaging unit | Form of supply                              | MetalliCard |
| Operating temperature range          | -55...130 °C                                |             |
| Operating temperature range, max.    | 130 °C                                      |             |
| Operating temperature range, min.    | -55 °C                                      |             |
| Recommended industries               | Process, Energy                             |             |
| Size of labelling field              | 12.2 x 25 mm                                |             |
| Width                                | 12 mm                                       |             |

**Conductor and cable markers**

|                                  |                          |                               |                    |
|----------------------------------|--------------------------|-------------------------------|--------------------|
| Cable tie passage                | Flat                     | Conductor O.D.                | 7 - 40 mm          |
| Conductor O.D., max.             | 40 mm                    | Conductor O.D., min.          | 7 mm               |
| Conductor cross-section, max.    | 500 mm <sup>2</sup>      | Conductor cross-section, min. | 16 mm <sup>2</sup> |
| Cross-section for connected wire | 16 - 500 mm <sup>2</sup> |                               |                    |

**Classifications**

|             |             |             |             |
|-------------|-------------|-------------|-------------|
| ETIM 6.0    | EC001530    | ETIM 7.0    | EC001530    |
| ETIM 8.0    | EC001530    | ETIM 9.0    | EC001530    |
| ECLASS 9.0  | 27-40-04-01 | ECLASS 9.1  | 27-40-04-01 |
| ECLASS 10.0 | 27-40-04-01 | ECLASS 11.0 | 27-28-11-02 |
| ECLASS 12.0 | 27-28-11-02 | ECLASS 13.0 | 27-28-11-02 |

**Environmental Product Compliance**

|            |   |
|------------|---|
| REACH SVHC | / |
|------------|---|

**Approvals**

|      |         |
|------|---------|
| ROHS | Conform |
|------|---------|

**Downloads**

|                  |  |
|------------------|--|
| Engineering Data | <a href="#">CAD data – STEP</a>          |
| Catalogues       | <a href="#">Catalogues in PDF-format</a> |

**SFX-M 12/40-5 LRP AL GE**

**Weidmüller Interface GmbH & Co. KG**  
Klingenbergstraße 26  
D-32758 Detmold  
Germany

[www.weidmueller.com](http://www.weidmueller.com)

Drawings

