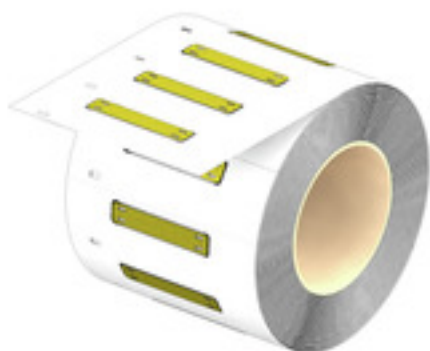


SFX-M 11/60-5 LRP AL GE**Weidmüller Interface GmbH & Co. KG**

Klingenbergstraße 26

D-32758 Detmold

Germany

www.weidmueller.com**General ordering data**

Version	MetalliCard, Conductor and cable markers, 7 - 40 mm, 60 x 11 mm, yellow
Order No.	2863670000
Type	SFX-M 11/60-5 LRP AL GE
GTIN (EAN)	4064675597100
Qty.	500 pc(s).

SFX-M 11/60-5 LRP AL GE**Weidmüller Interface GmbH & Co. KG**

Klingenbergstraße 26

D-32758 Detmold

Germany

www.weidmueller.com**Technical data****Dimensions and weights**

Depth	0.8 mm	Depth (inches)	0.031 inch
Height	60 mm	Height (inches)	2.362 inch
Width	11 mm	Width (inches)	0.433 inch
Net weight	0.853 g		

Temperatures

Operating temperature range	-55...130 °C
-----------------------------	--------------

General data

Colour	yellow	
Material	Anodized aluminium	
Number of markers per combination	1 MetalliCard = Conductor and cable markers	
Number of markers per packaging unit	Form of supply	MetalliCard
Operating temperature range	-55...130 °C	
Operating temperature range, max.	130 °C	
Operating temperature range, min.	-55 °C	
Recommended industries	Process, Energy	
Size of labelling field	11.2 x 45 mm	
Width	11 mm	

Conductor and cable markers

Cable tie passage	Flat	Conductor O.D.	7 - 40 mm
Conductor O.D., max.	40 mm	Conductor O.D., min.	7 mm
Conductor cross-section, max.	500 mm ²	Conductor cross-section, min.	16 mm ²
Cross-section for connected wire	16 - 500 mm ²		

Classifications

ETIM 6.0	EC001530	ETIM 7.0	EC001530
ETIM 8.0	EC001530	ETIM 9.0	EC001530
ECLASS 9.0	27-40-04-01	ECLASS 9.1	27-40-04-01
ECLASS 10.0	27-40-04-01	ECLASS 11.0	27-28-11-02
ECLASS 12.0	27-28-11-02	ECLASS 13.0	27-28-11-02

Environmental Product Compliance

REACH SVHC	/
------------	---

Approvals

ROHS	Conform
------	---------

Downloads

Engineering Data	CAD data – STEP
Catalogues	Catalogues in PDF-format

SFX-M 11/60-5 LRP AL GE

Weidmüller Interface GmbH & Co. KG

Klingenbergstraße 26

D-32758 Detmold

Germany

www.weidmueller.com

Drawings

