

CA-T2T2-7.5M-22/3-R-BBG**Weidmüller Interface GmbH & Co. KG**

Klingenbergstraße 26

D-32758 Detmold

Germany

www.weidmueller.com

The Mode 3 charging cables with ergonomic handle design offer charging comfort of the highest quality. Robust and durable in every respect: the housing is dirt and water repellent, shock and impact resistant as well as cold and heat resistant. Available in different lengths, in straight and spiral form, for 1- or 3-phase charging.

General ordering data

Version	AC charging cable, Connection type - charging point: Type 2, Connection type - vehicle: Type 2, Charging power, max.: 22 kW, Number of phases: 3, Rated current: 32 A, Cable length: 7.5 m, Cable type: regular
Order No.	2791300000
Type	CA-T2T2-7.5M-22/3-R-BBG
GTIN (EAN)	4064675070771
Qty.	1 pc(s).

Creation date October 2, 2024 5:57:51 PM CEST

CA-T2T2-7.5M-22/3-R-BBG**Weidmüller Interface GmbH & Co. KG**

Klingenbergstraße 26

D-32758 Detmold

Germany

www.weidmueller.com

Technical data**Dimensions and weights**

Diameter	16.8 mm	Net weight	4,580 g
----------	---------	------------	---------

Temperatures

Storage temperature	-40 °C...70 °C	Humidity at storage temperature	5 - 95% rel. humidity
Operating temperature	-30 °C...55 °C		

Material data

Max. relative humidity during storage	95 %	Operating temperature, max.	55 °C
Operating temperature, min.	-30 °C	Storage temperature, max.	70 °C
Storage temperature, min.	-40 °C		

Cable

Cable colour	black	Cable length	7.5 m
Cable type	regular		

Plug

Connection type - charging point	Type 2	Connection type - vehicle	Type 2
Plug colour	black, dark grey		

Approvals and norms

ROHS	Conform	Approvals	IEC 62196-1, IEC 62196-2, EN 50620
------	---------	-----------	------------------------------------

Classifications

ETIM 6.0	EC002897	ETIM 7.0	EC002897
ETIM 8.0	EC002897	ETIM 9.0	EC002897
ECLASS 9.0	27-14-47-05	ECLASS 9.1	27-14-47-05
ECLASS 10.0	27-14-47-05	ECLASS 11.0	27-14-47-05
ECLASS 12.0	27-14-47-05	ECLASS 13.0	27-14-47-05
ECLASS 14.0	27-14-47-05		

Environmental Product Compliance

REACH SVHC	Lead 7439-92-1
SCIP	f233b551-8efc-4a5f-b233-33b40f22269a
RoHS Compliance Status	Compliant with exemption
RoHS Exemption (if applicable/known)	6c

Approvals

Approvals



ROHS	Conform
------	---------

CA-T2T2-7.5M-22/3-R-BBG

Weidmüller Interface GmbH & Co. KG

Klingenbergstraße 26

D-32758 Detmold

Germany

www.weidmueller.com

Technical data

Downloads

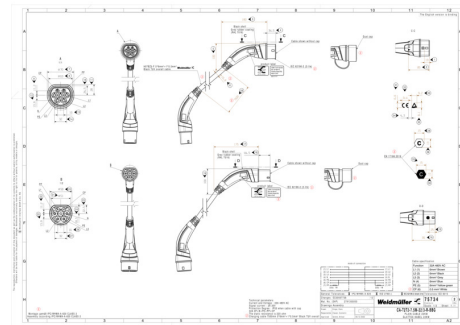
Approval/Certificate/Document of Conformity	Warranty Weidmüller e-mobility products Gewährleistung Weidmüller e-mobility Produkte
Technical Documentation	Drawing charging cable
User Documentation	Safety notes
Catalogues	Catalogues in PDF-format

CA-T2T2-7.5M-22/3-R-BBG

Weidmüller Interface GmbH & Co. KG
Klingenbergstraße 26
D-32758 Detmold
Germany

www.weidmueller.com

Drawings



CA-T2T2-7.5M-22/3-R-BBG**Weidmüller Interface GmbH & Co. KG**

Klingenbergstraße 26

D-32758 Detmold

Germany

www.weidmueller.com**Accessories****Wallbox AC Home**

Charging solution for the home – On your mark.

Get charged, Go!

The HOME Wallbox combines efficient charging technology with a robust housing in an attractive design. Focused on the essentials and intelligently controlled, it can be used for cost-optimized charging in the private environment.

General ordering data

Type	CH-W-H-A11-SPZZR	Version
Order No.	2781360000	Wallbox, max. charging capacity of 11 kW @ 3-phase (400 V) grid
GTIN (EAN)	4064675055754	connection, max. current 16 A, Type 2 socket outlet, Modbus RTU
Qty.	1 pc(s).	
Type	CH-W-H-A22-S	Version
Order No.	2724910000	Wallbox, max. charging capacity of 22 kW @ 3-phase (400 V) grid
GTIN (EAN)	4050118849769	connection, max. current 32 A, Type 2 socket outlet
Qty.	1 pc(s).	
Type	CH-W-H-A22-SPZZR	Version
Order No.	2781380000	Wallbox, max. charging capacity of 22 kW @ 3-phase (400 V) grid
GTIN (EAN)	4064675055778	connection, max. current 32 A, Type 2 socket outlet, Modbus RTU
Qty.	1 pc(s).	
Type	CH-W-H-A11-S	Version
Order No.	2718290000	Wallbox, max. charging capacity of 11 kW @ 3-phase (400 V) grid
GTIN (EAN)	4050118809053	connection, max. current 16 A, Type 2 socket outlet
Qty.	1 pc(s).	