

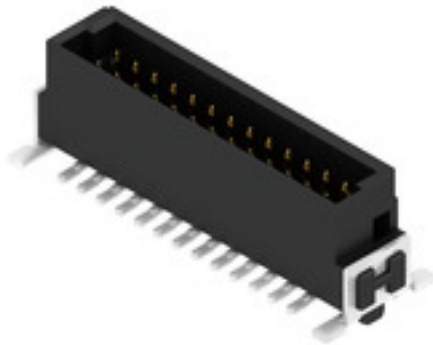
FMH1 S1/26V F1 B RL**Weidmüller Interface GmbH & Co. KG**

Klingenbergstraße 26

D-32758 Detmold

Germany

www.weidmueller.com

Product image**OMNIMATE® - Board-to-Board connectors**

Flexible engineering of compact devices

The use of future-proof contact systems, as well as the optimisation of manufacturing processes, are increasingly important in the development of efficient industrial devices, especially in the field of Industry 4.0. OMNIMATE® board-to-board connectors feature a 1.27 mm pitch and offer maximum flexibility due to different designs.

- **Flexible device design** - Industrial suitable density combined with high flexible connection combinations (Mezzanine, Mother-to-Daughter, Extender-card, Cable-to-Board)
- **Automation-Ready** - Developed for automatic assembly with high precise pin coplanarity and SMT-fixation
- **Reliable contact** - Up to 500 mating cycles due to industry suitable gold-surface (PdNi-Au)
- **Process-Ready** - High performance LCP material for reflow soldering
- **Scalability** - Different heights with high contact overlapping ensure various solutions from 12 – 80 poles.
- **Robust miniaturisation** - simple and safe connection even possible under unfavorable mating conditions – e.g. inclination or offset.

General ordering data

Version	PCB plug-in connector, male header, SMD solder connection, Pitch in mm (P): 1.27 mm, Number of poles: 26, 180°, Tape
Order No.	2747010000
Type	FMH1 S1/26V F1 B RL
GTIN (EAN)	4064675001225
Qty.	280 pc(s).
Product data	IEC: / 2.8 A UL: 150 V
Packaging	Tape

FMH1 S1/26V F1 B RL

Weidmüller Interface GmbH & Co. KG

Klingenbergstraße 26

D-32758 Detmold

Germany

www.weidmueller.com

Technical data

Dimensions and weights

Depth	7.4 mm	Depth (inches)	0.291 inch
Height	7.6 mm	Height (inches)	0.299 inch
Width	21.59 mm	Width (inches)	0.85 inch
Net weight	5.907 g		

System specifications

Product family	OMNIMATE Signal - Board-to-Board	Type of connection	Board connection
Mounting onto the PCB	SMD solder connection	Pitch in mm (P)	1.27 mm
Pitch in inches (P)	0.05 "	Outgoing elbow	180°
Number of poles	26	Number of solder pins per pole	1
Coplanarity:	0.1 mm	Number of rows	1
Pin series quantity	2	Protection degree	IP20
Volume resistance	<25 mΩ	Plugging cycles	500
Plugging force/pole, max.	0.6 N	Pulling force/pole, max.	0.6 N

Material data

Insulating material	LCP	Colour	black
Colour chart (similar)	RAL 9011	Insulating material group	IIIa
Insulation strength	$\geq 10^{10} \Omega$	Moisture Level (MSL)	1
UL 94 flammability rating	V-0	Contact base material	Copper alloy
Contact material	Cu-alloy	Contact surface	Gold over nickel
Layer structure of plug contact	$\geq 2 \mu\text{m Ni} / \geq 0.4 \mu\text{m PdNi} / \geq 0.05 \mu\text{m Au}$	Storage temperature, min.	-40 °C
Storage temperature, max.	70 °C	Operating temperature, min.	-55 °C
Operating temperature, max.	125 °C		

Rated data acc. to IEC

Rated current, min. number of poles (T _u =20°C)	2.8 A	Clearance, min.	0.4 mm
Creepage distance, min.	0.4 mm		

Rated data acc. to UL 1977

Reference to approval values	Specifications are maximum values, details - see approval certificate.	Rated voltage (UL 1977) (obsolete)	150 V
------------------------------	------------------------------------------------------------------------	------------------------------------	-------

Packing

Packaging	Tape	VPE length	350 mm
VPE width	345 mm	VPE height	135 mm

Classifications

ETIM 6.0	EC002637	ETIM 7.0	EC002637
ETIM 8.0	EC002637	ETIM 9.0	EC002637
ECLASS 9.0	27-44-04-02	ECLASS 9.1	27-44-04-02
ECLASS 10.0	27-44-04-02	ECLASS 11.0	27-46-02-01
ECLASS 12.0	27-46-02-01	ECLASS 13.0	27-46-02-01

FMH1 S1/26V F1 B RL

Weidmüller Interface GmbH & Co. KG
Klingenbergstraße 26
D-32758 Detmold
Germany

www.weidmueller.com

Technical data

Environmental Product Compliance

REACH SVHC

/

Important note

IPC conformity

Conformity: The products are developed, manufactured and delivered according international recognized standards and norms and comply with the assured properties in the data sheet resp. fulfill decorative properties in accordance with IPC-A-610 "Class 2". Further claims on the products can be evaluated on request.

Approvals

Approvals



ROHS

Conform

UL File Number Search

UL Website

Certificate No. (cURus)

E92202

Downloads

Engineering Data

[CAD data – STEP](#)

Catalogues

[Catalogues in PDF-format](#)

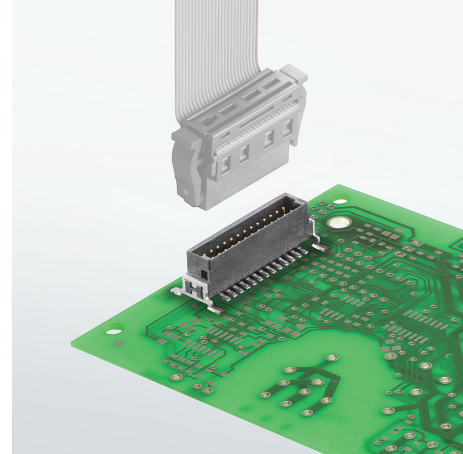
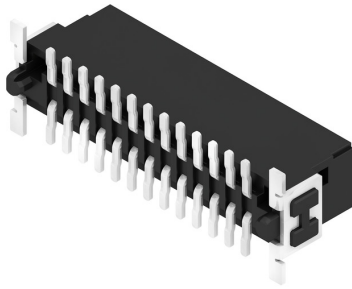
FMH1 S1/26V F1 B RL

Weidmüller Interface GmbH & Co. KG
 Klingenbergstraße 26
 D-32758 Detmold
 Germany

www.weidmueller.com

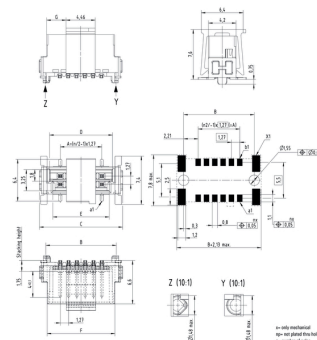
Drawings

Product image

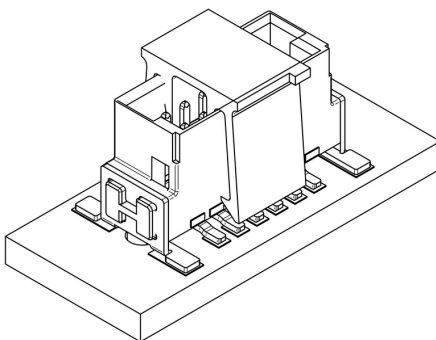


Dimensional drawing

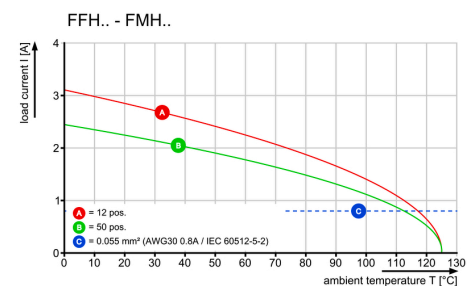
Type	No. of poles	Reference	A	B	C	D	E	F	G
FMH1 S1/26V F1 B RL	12	7240000000	8.00	12.71	12.7	4.57	4.57	10.17	4.00
FMH1 S1/26V F1 B RL	16	7240000000	8.00	12.71	12.7	4.57	4.57	10.17	4.00
FMH1 S1/26V F1 B RL	20	7240000000	8.00	12.71	12.7	4.57	4.57	10.17	4.00
FMH1 S1/26V F1 B RL	24	7240000000	8.00	12.71	12.7	4.57	4.57	10.17	4.00
FMH1 S1/26V F1 B RL	26	7240000000	8.00	12.71	12.7	4.57	4.57	10.17	4.00
FMH1 S1/26V F1 B RL	30	7240000000	8.00	12.71	12.7	4.57	4.57	10.17	4.00
FMH1 S1/26V F1 B RL	32	7240000000	8.00	12.71	12.7	4.57	4.57	10.17	4.00
FMH1 S1/26V F1 B RL	36	7240000000	8.00	12.71	12.7	4.57	4.57	10.17	4.00
FMH1 S1/26V F1 B RL	40	7240000000	8.00	12.71	12.7	4.57	4.57	10.17	4.00
FMH1 S1/26V F1 B RL	44	7240000000	8.00	12.71	12.7	4.57	4.57	10.17	4.00
FMH1 S1/26V F1 B RL	48	7240000000	8.00	12.71	12.7	4.57	4.57	10.17	4.00
FMH1 S1/26V F1 B RL	50	7240000000	8.00	12.71	12.7	4.57	4.57	10.17	4.00



Detailed drawing



Derating curve



FMH1 S1/26V F1 B RL

Weidmüller Interface GmbH & Co. KG

Klingenbergstraße 26

D-32758 Detmold

Germany

www.weidmueller.com

Drawings

Extender-Board



Mezzanine



Mother-to-Daughter



Board-to-Wire



FMH1 S1/..V F1 B RL



Type	Order no.	No. of poles	A	B	C	D	E	F	G
FMH1 S1/12V F1 B RL	2746980000	12	6,35	10,77	12,7	9,57	8,57	10,37	2,96
FMH1 S1/16V F1 B RL	2746990000	16	8,89	13,31	15,24	12,11	11,11	12,91	4,23
FMH1 S1/20V F1 B RL	2747000000	20	11,43	15,85	17,78	14,65	13,65	15,45	5,5
FMH1 S1/26V F1 B RL	2747010000	26	15,24	19,66	21,59	18,46	17,46	19,26	7,4
FMH1 S1/32V F1 B RL	2747020000	32	19,05	23,47	25,4	22,27	21,27	23,07	9,31
FMH1 S1/40V F1 B RL	2747030000	40	24,13	28,55	30,48	27,35	26,35	28,15	11,85
FMH1 S1/50V F1 B RL	2747040000	50	30,48	34,9	36,83	33,7	32,7	34,5	15,02
FMH1 S1/68V F1 B RL	2747050000	68	41,91	46,33	48,26	45,13	44,13	45,93	20,74
FMH1 S1/80V F1 B RL	2747060000	80	49,53	53,95	55,88	52,75	51,75	53,55	24,55



Male vertical - FMH1 | FMH3

Application - dimensions

	14 mm				
	13 mm				
	12 mm				
	11 mm				
	10 mm				
	9 mm				
	8 mm				
X	stacking heights	male 1,75mm female 6,25mm	male 3,25mm female 6,25mm	male 1,75mm female 9,05mm	male 3,25mm female 9,05mm
Y	PCB distance	8mm - 9,5mm	9,5mm - 11mm	10,8mm - 12,3mm	12,3mm - 13,8mm
S	Type	FMH1.. FFH6..	FMH3.. FFH6..	FMH1.. FFH9..	FMH3.. FFH9..



*S max. = S min. + 1,15 wiping length with additional contact overlap security

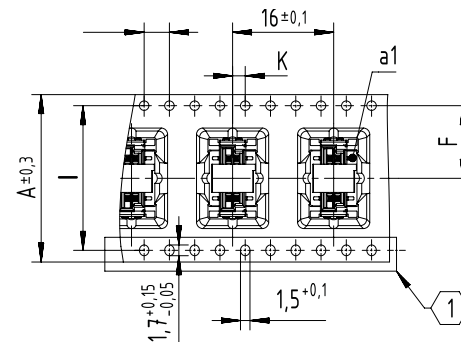


X	Y	S min.	*S max.	P min.	O
3,25	9,05	12,3	13,8	-	-
1,75	9,05	10,8	12,3	-	-
3,25	6,25	9,5	11	-	-
1,75	6,25	8	9,5	-	-
3,25	-	-	-	10,25	14,08
1,75	-	-	-	8,75	12,58

Mating conditions



Tape - dimensions



Tape dimensions	A	F	I	K
Pole 12	24,0	11,5 ± 0,1	-	2 ± 0,1
Poles 14 to 20	32,0	14,2 ± 0,1	28,4	2 ± 0,1
Poles 22 to 40	44,0	20,2 ± 0,15	40,2	2 ± 0,15
Poles 42 to 56	56,0	26,2 ± 0,15	52,4	2 ± 0,15
Poles 58 to 80	72,0	34,2 ± 0,3	68,4	2 ± 0,2

① No double sprocket holes for 12 pole numbers (tape size 24)



Reel - dimensions



Reel dimensions	E	F
Pole 12	24,4	
Poles 14 to 20	32,4	
Poles 22 to 40	44,4	
Poles 42 to 56	56,4	
Poles 58 to 80	72,4	

178mm for stacking height
1,75mm & 3,25mm

Recommended reflow soldering profile

Weidmüller Interface GmbH & Co. KG
Klingenbergstraße 16
D-32758 Detmold
Germany
Fon: +49 5231 14-0
Fax: +49 5231 14-292083
www.weidmueller.com



Reflow soldering profile

The perfect soldering profile for SMT Surface Mount Technology is one the most exiting question in SMT production. But there are more than one correct answer: The diagram of temperature-on-time is related to processing features of solder paste and to maximum load of components.

We have to consider the following parameters:

- Time for pre heating
- Maximum temperature
- Time above melting point
- Time for cooling
- Maximum heating rate
- Maximum cooling rate

We recommend a typical solder profile with associated process limits. With preheating components and board are prepared smoothly for the solder phase. Heating rate is typically $\leq +3\text{K/s}$. In parallel the solder paste is 'activated'. The time above melting point of 217°C the paste gets liquid and components and boards begin to connect. The maximum temperature of 245°C to 254°C should stay between 10 and 40 seconds. In the cooling phase at $\geq -6\text{K/s}$ solder is cured. Board and components cool down while avoiding cold cracks.