

KTB MH 507620 S4E1**Weidmüller Interface GmbH & Co. KG**

Klingenbergstraße 26

D-32758 Detmold

Germany

www.weidmueller.com**Similar to illustration**

Abbildung ähnlich

The Klippon® TB enclosure range provides excellent performance characteristics, even under the most difficult environmental conditions. In addition, it complies with the stricter requirements of potentially explosive atmospheres found specifically in the process or power generation industries. The Klippon® TB MH enclosure range offers further improvements to a product line that is already successfully leading the market.

The Klippon® TB MH enclosure range has the following advantages:

- Available in 15 sizes and 3 standard depths
- Equipped with up to 1 gland plate
- The gasket is protected against compression
- Completely removable padlock tab
- Cover lock outside the sealed zone
- Improved temperature performance
- IP66/IP67 protection
- Completely removable lid – without a tool
- Earthing stud in the cover and base of the enclosure
- Welded mounting feet
- International approvals

General ordering data

Version	Klippon TB MH (Terminal Box - Multi Hinge), Empty enclosure, stainless steel enclosure, Height: 500 mm, Width: 760 mm, Depth: 200 mm, Gland plates: Bottom, Material: Stainless steel 1.4404 (316L), electropolished, silver
Order No.	2698090000
Type	KTB MH 507620 S4E1
GTIN (EAN)	4064675030805
Qty.	1 pc(s).

KTB MH 507620 S4E1
Weidmüller Interface GmbH & Co. KG

Klingenbergstraße 26

D-32758 Detmold

Germany

www.weidmueller.com
Technical data
Dimensions and weights

Depth	200 mm	Depth (inches)	7.874 inch
Height	500 mm	Height (inches)	19.685 inch
Width	760 mm	Width (inches)	29.921 inch
Mounting dimension - height	534 mm	Mounting dimension - width	508 mm
Net weight	21,350 g		

Temperatures

Operating temperature	Note: room temperature (service)	Limited to IP66 protection when used in temperatures greater than 105 °C.
-60 °C...135 °C		

Cable glands, left

M12	70	M16	48
M20	32	M25	26
M32	14	M40	12
M50	5	M63	4
M75	3		

Cable glands, right

M12	70	M16	48
M20	32	M25	26
M32	14	M40	12
M50	5	M63	4
M75	3		

Cable glands, top/bottom

M12	96	M16	64
M20	40	M25	34
M32	18	M40	14
M50	6	M63	6
M75	4		

Certificate numbers enclosure

Approval conditions	ATEX, CCoE, DNV, IECEx, INMETRO, KC, NEPSI, CCC, UL AEx Class Div., UL AEx Class Zone, cULus	Attestation of Conformatiy No. (AoC)	DE PS261X 160309 001ISS06
Certificate No. (ATEX)	PTB11ATEX2019	Certificate No. (CCOE)	P461058_1
Certificate No. (IECEX)	IECEXPTB11.0071	Certificate no. (INMETRO)	IEX13.0006U
Certificate no. Terminal Box (ATEX)	IBExU14ATEX1050	Certificate no. Terminal Box (IECEX)	IECEXIBE14.0013
Certificate no. Terminal Box (INMETRO)	LMP 21.0017	Certificate no. Terminal Box (KOSHA)	16-AV4BO-0245X
Certificate no. Terminal Box (NEPSI)	GYJ14.1309	Certificate no. empty enclosure (ATEX)	IBExU14ATEX1028 U
Certificate no. empty enclosure (ECAS)	21-09-25241/ E21-09-053807	Certificate no. empty enclosure (IECEX)	IECEX IBE 14.0004U
Certificate no. empty enclosure (INMETRO)	LMP 21.0016U	Certificate no. empty enclosure (NEPSI)	GYJ14.1308U
Declaration of Conformatiy No. (DoC LVD)	DE PS261X 160412 001ISS03		

KTB MH 507620 S4E1
Weidmüller Interface GmbH & Co. KG

Klingenbergstraße 26

D-32758 Detmold

Germany

www.weidmueller.com
Technical data
General information

AF size	10 mm	Access opening: height	449 mm
Access opening: width		Areas of use	Explosive risk zone, Process industry, Oil and gas industry, Chemical industry, Offshore, Onshore
	709 mm		
Dimension of box		Enclosure attachment	4 welded-on mounting feet with 11 mm holes (2 slotted feet and 2 cross-shaped feet)
	920x690x290		
Flange plate		Flange plate mounting	M6 hexagonal head screws 10 SW
	Yes		
Gland plates		Impact resistance	7 J ATEX version, 10 J version standard
	Bottom		
Integral fixing	4, 6 or 9 stud bolts M6 inner (female) thread	Lid attachment	4 hinges and M6 hex-head slotted screws SW10
Material	Stainless steel 1.4404 (316L)	Material thickness of cover	1.5 mm
Material thickness of enclosure	1.5 mm	Material thickness of flange	3 mm
Max. payload		Note: protection class	If used in temperature ranges above 105 °C, IP protection is limited to IP 66.
	155 kg		
Number of lid screws	12	Opening angle lid	130 °
Operating temperature, max.	135 °C	Operating temperature, min.	-60 °C
Overall dimensions	521x794x215	Position PE bolts	Enclosure side C
Protection class (UL)	Type 3, Type 4X, Type 12	Protection degree	IP66, IP67
Seal material		Standards	DIN EN 62208 - Empty enclosure standard, DIN EN 61373 Class 1B**, DIN EN 15085-2, EN 60079-0, EN 60079-7, EN 60079-31, IEC 60079-0, IEC 60079-7, IEC 60079-31
	Silicone		
Surface finish	electropolished	Torque for lid screws	2.5 Nm

Housing earth

Earth, enclosure, internal	Welded-on M6 stainless-steel earth stud in enclosure body and lid.
----------------------------	--

horizontal assembly

WDU 10 / ZDU 10	3x67	WDU 16 / ZDU 16	2x56
WDU 2,5 / ZDU 2,5 / IDU 2,5	4x132	WDU 35 / ZDU 35	2x42
WDU 4 / ZDU 4	4x111	WDU 6 / ZDU 6	3x83

vertical assembly

WDU 10 / ZDU 10	5x42	WDU 16 / ZDU 16	4x35
WDU 2,5 / ZDU 2,5 / IDU 2,5	7x82	WDU 35 / ZDU 35	3x26
WDU 4 / ZDU 4	6x69	WDU 6 / ZDU 6	5x52

KTB MH 507620 S4E1

Weidmüller Interface GmbH & Co. KG

Klingenbergstraße 26

D-32758 Detmold

Germany

www.weidmueller.com

Technical data

Classifications

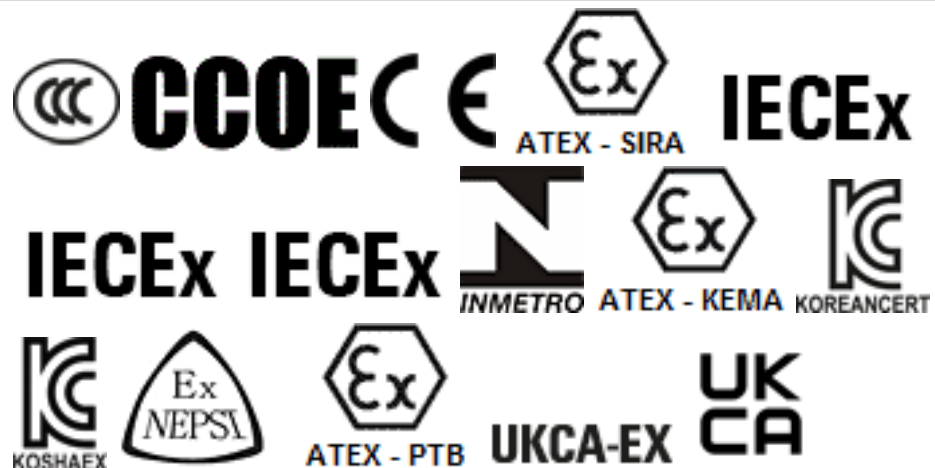
ETIM 6.0	EC002503	ETIM 7.0	EC002503
ETIM 8.0	EC002503	ETIM 9.0	EC002503
ECLASS 9.0	27-18-05-02	ECLASS 9.1	27-18-05-02
ECLASS 10.0	27-18-05-02	ECLASS 11.0	27-18-05-02
ECLASS 12.0	27-18-05-02	ECLASS 13.0	27-18-05-02
ECLASS 14.0	27-18-05-02		

Environmental Product Compliance

REACH SVHC	Lead 7439-92-1
SCIP	8d5fcdfe-c58e-44e1-a6b4-74d2bbccc9dd
RoHS Compliance Status	Compliant with exemption
RoHS Exemption (if applicable/known)	6c

Approvals

Approvals



ROHS

Conform

Downloads

Approval/Certificate/Document of Conformity	CCC 2020322303002358 KTB Assembly Enclosure CCC 2020322303002357 KTB Empty Enclosure CERTIFICADO - LMP 21.0016U - INVOLUCRO VAZIO KLIPPON TB FS... (KTb FS), TB MH... (KTb MH), TB QL... (KTb QL) (Rev.02) Attestation of Conformity - Klippon TB Empty Enclosures - AoC DE PS261X 160309 001ISS06 UKCA Attestation of Conformity - Klippon TB Empty Enclosures - AoC UKCA DE PS261X 220623 001ISS00 IBEXU14ATEX1028U IBEXU14ATEX1050 IECEXIBE14.0004U IECEXIBE14.0013 TAE000013S P4610581_1 24-01-100099/E24-01-102546/NB10 CERTIFICADO LMP 21.0017 KLIPPON TB EU Declaration of Conformity - Klippon TB Empty Enclosures - DoC DE PS261X 160412 001ISS03 UKCA Declaration of Conformity - Klippon TB Empty Enclosures - UKCA DE PS261X 220623 001ISS00
Engineering Data	CAD data – STEP
Catalogues	Catalogues in PDF-format

Creation date October 2, 2024 5:56:33 PM CEST

Catalogue status 28.09.2024 / We reserve the right to make technical changes.

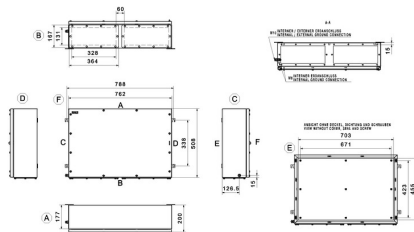
KTB MH 507620 S4E1

Weidmüller Interface GmbH & Co. KG
Klingenbergstraße 26
D-32758 Detmold
Germany

www.weidmueller.com

Drawings

Dimensioned drawing



KTB MH 507620 S4E1

Weidmüller Interface GmbH & Co. KG

Klingenbergstraße 26

D-32758 Detmold

Germany

www.weidmueller.com

Accessories

Depth 15 mm



General ordering data

Type	TS35X15 ST KTB5076 VER-C	Version
Order No.	8000073450	Rail, TS 35, TS 35 x 15, Width: 433 mm, without slot, Steel, galvanic
GTIN (EAN)	4064675283126	zinc plated and passivated
Qty.	20 pc(s).	

Type label holder

**Integrate, expand and customise: The ideal expansion for every application**

The consistent structure of accessories for the new Klippon® TB enclosure range means that you can easily adapt the enclosure to the specific requirements of each application.

Nameplate holders

There are a variety of designed label holders available for prominent display as required and for additional nameplates as needed.

General ordering data

Type	TPSDHA KTB 100X25 S2 2R	Version
Order No.	1257640000	Klippon TB (Terminal Box), Ratings plate holder, Riveted, Height: 25 mm, Width: 141 mm, Depth: 16.5 mm, Material: Stainless steel
GTIN (EAN)	4050118070354	1.4301, Mirror polished, silver
Qty.	1 pc(s).	
Type	TPSDHA KTB 130X50 S2 R	Version
Order No.	1283450000	Klippon TB (Terminal Box), Ratings plate holder, Riveted, Height: 50 mm, Width: 171 mm, Depth: 16.5 mm, Material: Stainless steel 1.4301, Mirror polished, silver
GTIN (EAN)	4050118073621	
Qty.	1 pc(s).	
Type	TPSDHA KTB 70X70M3 S2 R	Version
Order No.	1279320000	Klippon TB (Terminal Box), Ratings plate holder, Riveted, Height: 70 mm, Width: 70 mm, Depth: 20 mm, Material: Stainless steel 1.4301, Mirror polished, silver
GTIN (EAN)	4050118070101	
Qty.	1 pc(s).	

KTB MH 507620 S4E1

Weidmüller Interface GmbH & Co. KG

Klingenbergstraße 26

D-32758 Detmold

Germany

www.weidmueller.com

Accessories

Earthing stud

**Integrate, expand and customise: The ideal expansion for every application**

The consistent structure of accessories for the new Klippon® TB enclosure range means that you can easily adapt the enclosure to the specific requirements of each application.

Earthing bolt

Earthing bolts to exchange as a complete component in two versions – brass and stainless steel.

General ordering data

Type	PEBZ M10 KTB S4 SET	Version
Order No.	1192690000	Klippon TB (Terminal Box), Earthing stud, Miscellaneous, Height:
GTIN (EAN)	4032248974658	21 mm, Width: 21 mm, Depth: 48.7 mm, Material: Stainless steel
Qty.	1 pc(s).	1.4404, untreated, silver
Type	PEBZ M10 KTB BR SET	Version
Order No.	1192680000	Klippon TB (Terminal Box), Earthing stud, Miscellaneous, Height: 21
GTIN (EAN)	4032248974641	mm, Width: 21 mm, Depth: 48.7 mm, Material: Brass, untreated, silver
Qty.	1 pc(s).	

508 x 762 mm

**Integrate, expand and customise: The ideal expansion for every application**

The consistent structure of accessories for the new Klippon® TB enclosure range means that you can easily adapt the enclosure to the specific requirements of each application.

Mounting plates

Mounting plates, with and without hole patterns, for longitudinal and transverse mounting of DIN mounting rails or components directly onto the mounting plate.

General ordering data

Type	KTB MOPL 5076 MSZN	Version
Order No.	2716120000	Klippon TB (Terminal Box), Mounting plate, Height: 453 mm, Width:
GTIN (EAN)	4064675047902	701 mm, Depth: 12 mm, Material: Sheet steel, galvanized, silver
Qty.	1 pc(s).	
Type	KTB MOPL 5076 MSZN H	Version
Order No.	2716130000	Klippon TB (Terminal Box), Mounting plate, prepunched, Height:
GTIN (EAN)	4064675047919	453 mm, Width: 701 mm, Depth: 12 mm, Material: Sheet steel,
Qty.	1 pc(s).	galvanized, silver

KTB MH 507620 S4E1

Weidmüller Interface GmbH & Co. KG
Klingenbergstraße 26
D-32758 Detmold
Germany

www.weidmueller.com

Accessories

Installation material



Integrate, expand and customise - the perfect supplement to every application

The fully structured range of system accessories for the new Klippon® TB enclosure series allows you to easily adapt the enclosures to meet the specific requirements of every application.

Mounting hardware kits

Mounting hardware kits are available for quick and easy installation of type label holders, document holders and rain hoods.

The **label fastening set – SD** is required to install a plastic (Trafolyte) ID or type label. With the aid of this set can you mount the ID or type label directly on the enclosure cover. The label fastening set has been specially developed for this purpose. Only by using this fastening set can you ensure that there will be no leaks into the enclosure or damage to the label.

The **universal fastening set – TPSD** has been developed to enable secure and quick installation of type label holders, rain covers or document holders, for example. By using this fastening set, the risk of leaks can be minimised, if not avoided.

General ordering data

Type	SD FIXING SET	Version
Order No.	1285200000	Klippon TB (Terminal Box), Identification plate fixing set, Height: 12
GTIN (EAN)	4050118075472	mm, Width: 12 mm, Depth: 16.4 mm, Material: Stainless steel, rust-
Qty.	1 pc(s).	proof, untreated, silver
Type	TPSD FIXING SET KTB	Version
Order No.	1252190000	Klippon TB (Terminal Box), Type plate fixings set, Material: Stainless
GTIN (EAN)	4050118043969	steel, rust-proof, untreated, silver
Qty.	20 pc(s).	
Type	FKSC M6X8 D9/SW3	Version
Order No.	0642600000	Klippon TB (Terminal Box), Mounting screw, Material: Steel
GTIN (EAN)	4008190058258	
Qty.	50 pc(s).	

KTB MH 507620 S4E1

Weidmüller Interface GmbH & Co. KG
Klingenbergstraße 26
D-32758 Detmold
Germany

www.weidmueller.com

Accessories

Document holders



Integrate, expand and customise - the perfect supplement to every application

The fully structured range of system accessories for the new Klippon® TB enclosure series allows you to easily adapt the enclosures to meet the specific requirements of every application.

Document holders

Document holders for the proper storage of documents in the enclosure

General ordering data

Type	DOHA KTB A5 S2 R	Version
Order No.	1252750000	Klippon TB (Terminal Box), Document holders, Riveted, Height: 150
GTIN (EAN)	4050118045390	mm, Width: 180 mm, Depth: 20 mm, Material: Stainless steel 1.4301,
Qty.	1 pc(s).	Mirror polished, silver
Type	DOHA KTB A4 S2 R	Version
Order No.	1252730000	Klippon TB (Terminal Box), Document holders, Riveted, Height: 200
GTIN (EAN)	4050118045383	mm, Width: 240 mm, Depth: 20 mm, Material: Stainless steel 1.4301,
Qty.	1 pc(s).	Mirror polished, silver
Type	DOHA KTB A6 S2 R	Version
Order No.	1252780000	Klippon TB (Terminal Box), Document holders, Riveted, Height: 110
GTIN (EAN)	4050118045512	mm, Width: 130 mm, Depth: 20 mm, Material: Stainless steel 1.4301,
Qty.	1 pc(s).	Mirror polished, silver

Mounting plates



Mounting plates, with and without hole patterns, for longitudinal and transverse mounting of DIN mounting rails or components directly onto the mounting plate.

General ordering data

Type	GFSC M5X10 TX20 SET	Version
Order No.	1274150000	Klippon EB (Essential Box), Mounting screw, Height: 13.3 mm, Width:
GTIN (EAN)	4050118063820	8.5 mm, Depth: 8.5 mm, Material: Steel, galvanized, galvanic zinc
Qty.	1 pc(s).	plated and passivated, silver

KTB MH 507620 S4E1**Weidmüller Interface GmbH & Co. KG**

Klingenbergstraße 26

D-32758 Detmold

Germany

www.weidmueller.com**Accessories****Depth 7.5 mm****General ordering data**

Type	TS35X7.5 ST KTB5076 VER ...	Version
Order No.	8000073449	Rail, TS 35, TS 35 x 7.5, Width: 433 mm, without slot, Steel, galvanic
GTIN (EAN)	4064675356851	zinc plated and passivated
Qty.	20 pc(s).	