

**CMA-41-1000-5A-5VA-0,5****Weidmüller Interface GmbH & Co. KG**

Klingenbergstraße 26

D-32758 Detmold

Germany

www.weidmueller.com

**Plug-on current transformers**

Plug-on current transformers are especially suitable for mounting on the busbar.

The advantages of this type are: Price optimisation, safe connection option, high mechanical holding forces and high current resistance.

**General ordering data**

Version	Primary current: 1000 A, Secondary current max.: 5 A, Load: , Tolerance class: , closed current transformer
Order No.	<a href="#">2680210000</a>
Type	CMA-41-1000-5A-5VA-0,5
GTIN (EAN)	4050118696547
Qty.	1 pc(s).
Manufacturer	MBS AG

**CMA-41-1000-5A-5VA-0,5****Weidmüller Interface GmbH & Co. KG**

Klingenbergstraße 26

D-32758 Detmold

Germany

www.weidmueller.com

**Technical data****Dimensions and weights**

Net weight	321 g
------------	-------

**Dimensions of live conductors**

Type of conductor	Insulated conductor only	Round conductor	31 mm
Rail	30 x 15 mm, 40 x 10 mm	Installation location	Indoor use

**Electrical attributes**

Primary current	1,000 A	Secondary current	0...5 A
-----------------	---------	-------------------	---------

**Technical properties**

Nominal frequency	50 Hz	Protection degree	IP20
Thermal rated continuous current $I_{\text{thermal}}$	$1.2 \times I_{\text{rated}}$		

**Classifications**

ETIM 6.0	EC002048	ETIM 7.0	EC002048
ETIM 8.0	EC002048	ETIM 9.0	EC002048
ECLASS 9.0	27-21-09-02	ECLASS 9.1	27-21-09-02
ECLASS 10.0	27-21-09-02	ECLASS 11.0	27-21-09-02
ECLASS 12.0	27-21-09-02	ECLASS 13.0	27-21-09-02
ECLASS 14.0	27-21-09-02		

**Environmental Product Compliance**

REACH SVHC	/
RoHS Compliance Status	Compliant

**Approvals**

ROHS	Conform
------	---------

**Downloads**

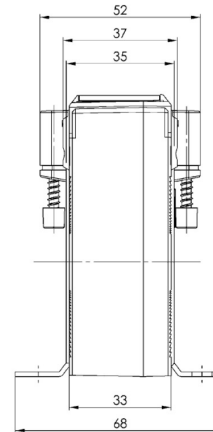
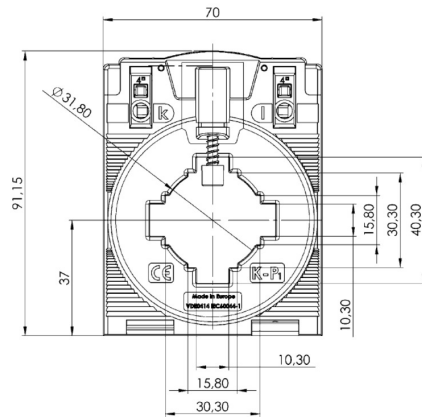
Approval/Certificate/Document of Conformity	<a href="#">UL- certificate</a> <a href="#">UKCA Declaration of Conformity</a> <a href="#">Declaration of Conformity</a>
Engineering Data	<a href="#">CAD data – STEP</a>
Technical Documentation	<a href="#">3D drawing</a>
User Documentation	<a href="#">Device description – instruction sheet english.pdf</a> <a href="#">Device description – Betriebsanleitung deutsch</a>
Catalogues	<a href="#">Catalogues in PDF-format</a>

## CMA-41-1000-5A-5VA-0,5

**Weidmüller Interface GmbH & Co. KG**  
Klingenbergstraße 26  
D-32758 Detmold  
Germany

[www.weidmueller.com](http://www.weidmueller.com)

# Drawings



**CMA-41-1000-5A-5VA-0,5**

**Weidmüller Interface GmbH & Co. KG**  
Klingenbergstraße 26  
D-32758 Detmold  
Germany

[www.weidmueller.com](http://www.weidmueller.com)

## Accessories

### Plug-on current transformer - ValueLine



#### Plug-on current transformers

Plug-on current transformers are especially suitable for mounting on the busbar.

The advantages of this type are: Price optimisation, safe connection option, high mechanical holding forces and high current resistance.

#### General ordering data

Type	CMA-31-41-SNAP-ON
Order No.	<a href="#">2723380000</a>
GTIN (EAN)	4050118810622
Qty.	1 pc(s).