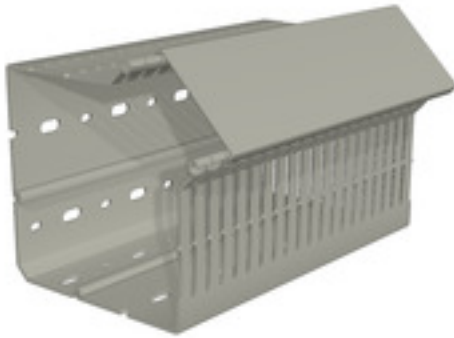


**CD-COD 110X110 4/6 GY****Weidmüller Interface GmbH & Co. KG**

Klingenbergstraße 26

D-32758 Detmold

Germany

[www.weidmueller.com](http://www.weidmueller.com)

The broad range of cable ducts offers you a flexible wire management system in a constant quality. The accurately sizes of the punched holes in accordance to DIN EN 50085-2-3 enables you a precise installation. Next to wire holding lugs as fixing aid for already installed wires, the optimal closing mechanism provide an easy snapping as well as a safe fit of the lid.

**General ordering data**

Version	Cable duct corner duct, 110 mm x 110 mm, 4.00 mm x 6.00 mm, 2000 mm
Order No.	<a href="#">2589460000</a>
Type	CD-COD 110X110 4/6 GY
GTIN (EAN)	4050118601299
Qty.	8 m

**CD-COD 110X110 4/6 GY****Weidmüller Interface GmbH & Co. KG**

Klingenbergstraße 26

D-32758 Detmold

Germany

[www.weidmueller.com](http://www.weidmueller.com)**Technical data****Dimensions and weights**

Height	110 mm	Height (inches)	4.331 inch
Width	110 mm	Width (inches)	4.331 inch
Length	2,000 mm	Length (inches)	78.74 inch
Net weight	1,513 g		

**Temperatures**

Operating temperature range	-5...60 °C
-----------------------------	------------

**General information**

Colour	grey	Flexible wiring duct	No
Halogen	Yes	Included in delivery	Cable duct, Lid
Lid	Yes	Material	PVC / lead-free
Non-tracking	Yes	Operating temperature range	-5...60 °C
Slit gap	6 mm	Slit width	4 mm
Standards	In accordance with DIN EN 50085	Type of mounting	when screwed in, With adhesive, Riveted
UL 94 flammability rating	V-0	Usable cross-section	11,020 mm²
Version of side panel	slotted		

**Classifications**

ETIM 6.0	EC001942	ETIM 7.0	EC001942
ETIM 8.0	EC001942	ETIM 9.0	EC001942
ECLASS 9.1	27-40-07-07	ECLASS 10.0	27-40-07-07
ECLASS 11.0	27-40-07-07	ECLASS 12.0	27-40-07-07
ECLASS 13.0	27-40-07-07		

**Environmental Product Compliance**

REACH SVHC	/
------------	---

**Approvals**

ROHS	Conform
------	---------

**Downloads**

Engineering Data	<a href="#">CAD data – STEP</a>
Catalogues	<a href="#">Catalogues in PDF-format</a>

**CD-COD 110X110 4/6 GY****Weidmüller Interface GmbH & Co. KG**

Klingenbergstraße 26

D-32758 Detmold

Germany

[www.weidmueller.com](http://www.weidmueller.com)**Accessories****Side arm**

Increase your wiring flexibility with our comprehensive range of accessories available from a single source.

**General ordering data**

Type	CD-RETA	Version
Order No.	<a href="#">2554080000</a>	Cable duct binder arm
GTIN (EAN)	4050118564204	
Qty.	100 pc(s).	

**Metric**

Increase your wiring flexibility with our comprehensive range of accessories available from a single source.

**General ordering data**

Type	CD-LID 60 GY	Version
Order No.	<a href="#">2590050000</a>	Cable duct cover, 60 mm
GTIN (EAN)	4050118600711	
Qty.	2 m	

**CD-COD 110X110 4/6 GY****Weidmüller Interface GmbH & Co. KG**

Klingenbergstraße 26

D-32758 Detmold

Germany

[www.weidmueller.com](http://www.weidmueller.com)**Accessories****Flat**

Increase your wiring flexibility with our comprehensive range of accessories available from a single source.

**General ordering data**

Type	CD-RET 60	Version
Order No.	<a href="#">2554030000</a>	Cable duct binder
GTIN (EAN)	4050118564167	
Qty.	500 pc(s).	

**Rivet and cover**

Increase your wiring flexibility with our comprehensive range of accessories available from a single source.

**General ordering data**

Type	EXRV-T 6.5	Version
Order No.	<a href="#">2562710000</a>	Expanding-rivet tool
GTIN (EAN)	4050118571615	
Qty.	4 pc(s).	
Type	EXRV 4.5	Version
Order No.	<a href="#">2562700000</a>	Expanding rivet, 27.5 mm x
GTIN (EAN)	4050118571622	
Qty.	1,000 pc(s).	
Type	EXRV 6.5	Version
Order No.	<a href="#">2562690000</a>	Expanding rivet, 32 mm x
GTIN (EAN)	4050118571639	
Qty.	1,000 pc(s).	
Type	EXRV-T 4.5	Version
Order No.	<a href="#">2562720000</a>	Expanding-rivet tool
GTIN (EAN)	4050118571578	
Qty.	4 pc(s).	