

CABTITE CGS M63 BK**Weidmüller Interface GmbH & Co. KG**

Klingenbergstraße 26

D-32758 Detmold

Germany

www.weidmueller.com**Similar to illustration**

For metric M20 to M63 through-holes, the Cabtite cable entry system offers separable cable glands for cables with and without plugs. In case of maintenance or changes in the system, pre-assembled cables with diameters of 2 to 35 mm can be inserted quickly and safely in panels or enclosures. Reliable sealing of IP66 in accordance with DIN EN 60529 and an absolutely secure fitting (strain relief based on DIN EN 62444) is ensured by placing slotted sealing elements with a wave cut around the cable before being inserted into one of the two halves of the cable gland. The separable system ensures easy and fast installation. After inserting the sealing element, the two halves of the cable gland are simply snapped together. A lock-nut, which is also separable, on the inside of the panel ensures a reliable and secure hold.

General ordering data

| | |
|-------------------|---------------------------------------------------------------------------------------------------------------------------------------------------|
| Version | separable cable gland, Cabtite (cable entry system), Polyamide, glass fibre-reinforced, Deep black, Height: 24.7 mm, M 63, -40 °C... 120 °C, IP66 |
| Order No. | 2584120000 |
| Type | CABTITE CGS M63 BK |
| GTIN (EAN) | 4050118617238 |
| Qty. | 5 pc(s). |
| Replacement parts | 2584010000 |

CABTITE CGS M63 BK**Weidmüller Interface GmbH & Co. KG**

Klingenbergstraße 26

D-32758 Detmold

Germany

www.weidmueller.com

Technical data**Dimensions and weights**

| | | | |
|------------|---------|-----------------|------------|
| Depth | 39.7 mm | Depth (inches) | 1.563 inch |
| Height | 24.7 mm | Height (inches) | 0.972 inch |
| Width | 72 mm | Width (inches) | 2.835 inch |
| Length | 39.7 mm | Length (inches) | 1.563 inch |
| Net weight | 43.5 g | | |

Temperatures

| | |
|-----------------------|------------------|
| Operating temperature | -40 °C... 120 °C |
|-----------------------|------------------|

General information

| | | | |
|---------------------------|-----------------------------------------------------|-------------------------|-----------------------------------|
| AF size 1 | 68 mm | AF size 2 | 82 mm |
| External thread | M 63 | Halogen | No |
| Length of thread | 15 mm | Material | Polyamide, glass fibre-reinforced |
| Opening diameter | 63 mm | Pitch of thread | 1.5 mm |
| Protection degree | IP66 | Sealing | TPE |
| Sealing element | 1 large sealing element or 4 small sealing elements | Silicone | No |
| Tightening torque, max. | 7 Nm | Tightening torque, min. | 6.8 Nm |
| UL 94 flammability rating | V-0 | | |

Classifications

| | | | |
|-------------|-------------|-------------|-------------|
| ETIM 6.0 | EC000441 | ETIM 7.0 | EC000441 |
| ETIM 8.0 | EC000441 | ETIM 9.0 | EC000441 |
| ECLASS 9.0 | 27-14-44-32 | ECLASS 9.1 | 27-14-44-32 |
| ECLASS 10.0 | 27-14-44-32 | ECLASS 11.0 | 27-14-44-32 |
| ECLASS 12.0 | 27-14-08-01 | ECLASS 13.0 | 27-14-08-01 |

Environmental Product Compliance

| | |
|------------|---|
| REACH SVHC | / |
|------------|---|

Approvals

Approvals



| | |
|------|---------|
| ROHS | Conform |
|------|---------|

Downloads

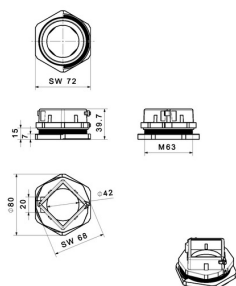
| | |
|---------------------------------------------|-------------------------------------------------------------------|
| Approval/Certificate/Document of Conformity | EU Declaration of Conformity - Cable entry system |
| Engineering Data | CAD data – STEP |
| User Documentation | Installation Instructions |
| Catalogues | Catalogues in PDF-format |

CABTITE CGS M63 BK**Weidmüller Interface GmbH & Co. KG**

Klingenbergstraße 26

D-32758 Detmold

Germany

www.weidmueller.com**Drawings****Dimensioned drawing**

CABTITE CGS M63 BK

Weidmüller Interface GmbH & Co. KG

Klingenbergstraße 26

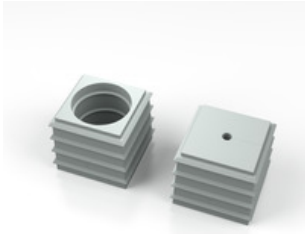
D-32758 Detmold

Germany

www.weidmueller.com

Accessories

SE small 20x20mm in grey



Whether a large or small cable diameter – Cabtite always offers the right seal insert.

The conical shape of the sealing elements allows the previously positioned snap-in grid inlays to be pushed in easily from the inside to the outside. It reliably seals intermediate spaces and provides strain relief in accordance with DIN EN 62444. The seal inserts combined with the frames achieve an IP 66 degree of protection. As a result of its slotted design with wave cut, it is especially suitable for pre-assembled cables.

- The black seal inserts are designed for a particularly high operating temperature and offer fire safety class UL 94 HB
- The grey sealing elements comply with fire safety class UL 94 V0 and are therefore suitable for the demands of the railway industry
- By using multiple inserts, two or more cables, as well as special cables, can be passed through a sealing element

General ordering data

| | | |
|------------|----------------------------|-------------------------------------------------------------------------|
| Type | CABTITE SE 2/5-6 SML GY | Version |
| Order No. | 2584890000 | Sealing element, Cabtite (cable entry system), TPE, Light Grey, Height: |
| GTIN (EAN) | 4050118616781 | 20.3 mm, Width: 20.3 mm, Depth: 17.7 mm, -40 °C...90 °C, IP66 |
| Qty. | 10 pc(s). | |
| Type | CABTITE BSE SML GY | Version |
| Order No. | 2583350000 | Sealing element, Cabtite (cable entry system), TPE, Light Grey, Height: |
| GTIN (EAN) | 4050118615609 | 20.3 mm, Width: 20.3 mm, Depth: 17.7 mm, -40 °C...90 °C, IP66 |
| Qty. | 10 pc(s). | |
| Type | CABTITE SE 5-6 SML GY | Version |
| Order No. | 2583450000 | Sealing element, Cabtite (cable entry system), TPE, Light Grey, Height: |
| GTIN (EAN) | 4050118616538 | 20.3 mm, Width: 20.3 mm, Depth: 17.7 mm, -40 °C...90 °C, IP66 |
| Qty. | 10 pc(s). | |
| Type | CABTITE SE 6-7 SML GY | Version |
| Order No. | 2583460000 | Sealing element, Cabtite (cable entry system), TPE, Light Grey, Height: |
| GTIN (EAN) | 4050118616668 | 20.3 mm, Width: 20.3 mm, Depth: 17.7 mm, -40 °C...90 °C, IP66 |
| Qty. | 10 pc(s). | |

CABTITE CGS M63 BK

Weidmüller Interface GmbH & Co. KG

Klingenbergstraße 26

D-32758 Detmold

Germany

www.weidmueller.com

Accessories

Inlays

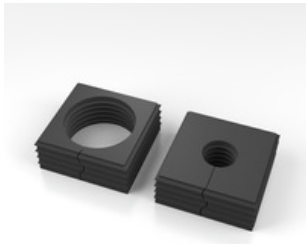


The pluggable click inlays allow the frame openings to be configured as required for use with small or large sealing elements. An audible "click" confirms correct installation. This means that the Cabtite cable entry system can be variably configured for different requirements (cables, conductors, hoses, pneumatic and hydraulic lines).

General ordering data

| Type | CABTITE GI X BK | Version |
|------------|----------------------------|-------------------------------------------------------------------------|
| Order No. | 2584290000 | Inlay, Cabtite (cable entry system), Polyamide, glass fibre-reinforced, |
| GTIN (EAN) | 4050118616439 | Deep black, Height: 44 mm, Width: 44 mm, Depth: 17.5 mm, -40 °C... |
| Qty. | 5 pc(s). | 120 °C, IP66 |

SE large 40x40mm in black



Whether a large or small cable diameter – Cabtite always offers the right seal insert.

The conical shape of the sealing elements allows the previously positioned snap-in grid inlays to be pushed in easily from the inside to the outside. It reliably seals intermediate spaces and provides strain relief in accordance with DIN EN 62444. The seal inserts combined with the frames achieve an IP 66 degree of protection. As a result of its slotted design with wave cut, it is especially suitable for pre-assembled cables.

- The black seal inserts are designed for a particularly high operating temperature and offer fire safety class UL 94 HB
- The grey sealing elements comply with fire safety class UL 94 V0 and are therefore suitable for the demands of the railway industry
- By using multiple inserts, two or more cables, as well as special cables, can be passed through a sealing element

General ordering data

| Type | CABTITE BSE LRG BK | Version |
|------------|----------------------------|-------------------------------------------------------------------|
| Order No. | 2583900000 | Sealing element, Cabtite (cable entry system), TPE, Deep black, |
| GTIN (EAN) | 4050118616378 | Height: 42.8 mm, Width: 42.8 mm, Depth: 17.7 mm, -40 °C...120 °C, |
| Qty. | 10 pc(s). | IP66 |
| Type | CABTITE CSE 7-24 LRG BK | Version |
| Order No. | 2583500000 | Sealing element, Cabtite (cable entry system), TPE, Deep black, |
| GTIN (EAN) | 4050118615975 | Height: 42.8 mm, Width: 42.8 mm, Depth: 63 mm, -40 °C...120 °C, |
| Qty. | 10 pc(s). | IP66 |

CABTITE CGS M63 BK

Weidmüller Interface GmbH & Co. KG

Klingenbergstraße 26

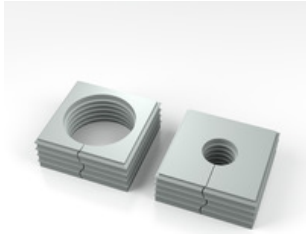
D-32758 Detmold

Germany

www.weidmueller.com

Accessories

SE large 40x40mm in grey



Whether a large or small cable diameter – Cabtite always offers the right seal insert.

The conical shape of the sealing elements allows the previously positioned snap-in grid inlays to be pushed in easily from the inside to the outside. It reliably seals intermediate spaces and provides strain relief in accordance with DIN EN 62444. The seal inserts combined with the frames achieve an IP 66 degree of protection. As a result of its slotted design with wave cut, it is especially suitable for pre-assembled cables.

- The black seal inserts are designed for a particularly high operating temperature and offer fire safety class UL 94 HB
- The grey sealing elements comply with fire safety class UL 94 V0 and are therefore suitable for the demands of the railway industry
- By using multiple inserts, two or more cables, as well as special cables, can be passed through a sealing element

General ordering data

| | | |
|------------|----------------------------|---------------------------------------------------------------------------------------------------------------------------------------|
| Type | CABTITE BSE LRG GY | Version |
| Order No. | 2584520000 | Sealing element, Cabtite (cable entry system), TPE, Light Grey, Height: 42.8 mm, Width: 42.8 mm, Depth: 17.7 mm, -40 °C...90 °C, IP66 |
| GTIN (EAN) | 4050118616330 | |
| Qty. | 10 pc(s). | |

| | | |
|------------|----------------------------|---------------------------------------------------------------------------------------------------------------------------------------|
| Type | CABTITE SE 19-20 LRG GY | Version |
| Order No. | 2584460000 | Sealing element, Cabtite (cable entry system), TPE, Light Grey, Height: 42.8 mm, Width: 42.8 mm, Depth: 17.7 mm, -40 °C...90 °C, IP66 |
| GTIN (EAN) | 4050118616491 | |
| Qty. | 10 pc(s). | |

Round splitting stamp for metric cable glands



Weidmüller punching tools should be your first choice for making cut-outs in your electrical cabinets!

- PG cable glands
- M cable glands
- Special cable glands

General ordering data

| | | |
|------------|----------------------------|-------------|
| Type | KOS-M63 | Version |
| Order No. | 1548400000 | Sheet holes |
| GTIN (EAN) | 4050118354027 | |
| Qty. | 1 pc(s). | |

CABTITE CGS M63 BK

Weidmüller Interface GmbH & Co. KG

Klingenbergstraße 26

D-32758 Detmold

Germany

www.weidmueller.com

Accessories

SE small 20x20mm in black



Whether a large or small cable diameter – Cabtite always offers the right seal insert.

The conical shape of the sealing elements allows the previously positioned snap-in grid inlays to be pushed in easily from the inside to the outside. It reliably seals intermediate spaces and provides strain relief in accordance with DIN EN 62444. The seal inserts combined with the frames achieve an IP 66 degree of protection. As a result of its slotted design with wave cut, it is especially suitable for pre-assembled cables.

- The black seal inserts are designed for a particularly high operating temperature and offer fire safety class UL 94 HB
- The grey sealing elements comply with fire safety class UL 94 V0 and are therefore suitable for the demands of the railway industry
- By using multiple inserts, two or more cables, as well as special cables, can be passed through a sealing element

General ordering data

| | | |
|------------|----------------------------|--------------------------------------------------------------------|
| Type | CABTITE SE 4/4-5 SML BK | Version |
| Order No. | 2583560000 | Sealing element, Cabtite (cable entry system), TPE, Deep black, |
| GTIN (EAN) | 4050118616897 | Height: 20.3 mm, Width: 20.3 mm, Depth: 17.7 mm, -40 °C... 120 °C, |
| Qty. | 10 pc(s). | IP66 |
| Type | CABTITE SE 9-10 SML BK | Version |
| Order No. | 2584080000 | Sealing element, Cabtite (cable entry system), TPE, Deep black, |
| GTIN (EAN) | 4050118616309 | Height: 20.3 mm, Width: 20.3 mm, Depth: 17.7 mm, -40 °C... 120 °C, |
| Qty. | 10 pc(s). | IP66 |
| Type | CABTITE BSE SML BK | Version |
| Order No. | 2584790000 | Sealing element, Cabtite (cable entry system), TPE, Deep black, |
| GTIN (EAN) | 4050118616057 | Height: 20.3 mm, Width: 20.3 mm, Depth: 17.7 mm, -40 °C... 120 °C, |
| Qty. | 10 pc(s). | IP66 |
| Type | CABTITE SE 7-8 SML BK | Version |
| Order No. | 2584670000 | Sealing element, Cabtite (cable entry system), TPE, Deep black, |
| GTIN (EAN) | 4050118616989 | Height: 20.3 mm, Width: 20.3 mm, Depth: 17.7 mm, -40 °C... 120 °C, |
| Qty. | 10 pc(s). | IP66 |

CABTITE CGS M63 BK

Weidmüller Interface GmbH & Co. KG

Klingenbergstraße 26

D-32758 Detmold

Germany

www.weidmueller.com

Accessories

Blanking plug

The blanking plugs are used for the safe closing of
unneeded cable passages in the sealing elements.



General ordering data

| | | |
|------------|----------------------------|------------------------------------------------------------------------|
| Type | CABTITE BP 7MM PA | Version |
| Order No. | 2652350000 | Blind plug, Cabtite (cable entry system), Polyamide, white, Height: 16 |
| GTIN (EAN) | 4050118662450 | mm, Width: 7 mm, Depth: 16 mm, -40 °C... 120 °C, IP66 |
| Qty. | 25 pc(s). | |
| Type | CABTITE BP 8MM PA | Version |
| Order No. | 2652360000 | Blind plug, Cabtite (cable entry system), Polyamide, white, Height: 16 |
| GTIN (EAN) | 4050118662467 | mm, Width: 8 mm, Depth: 16 mm, -40 °C... 120 °C, IP66 |
| Qty. | 25 pc(s). | |
| Type | CABTITE BP 6MM PA | Version |
| Order No. | 2652340000 | Blind plug, Cabtite (cable entry system), Polyamide, white, Height: 16 |
| GTIN (EAN) | 4050118661842 | mm, Width: 6 mm, Depth: 16 mm, -40 °C... 120 °C, IP66 |
| Qty. | 25 pc(s). | |
| Type | CABTITE BP 9MM PA | Version |
| Order No. | 2652370000 | Blind plug, Cabtite (cable entry system), Polyamide, white, Height: 16 |
| GTIN (EAN) | 4050118662474 | mm, Width: 9 mm, Depth: 16 mm, -40 °C... 120 °C, IP66 |
| Qty. | 25 pc(s). | |
| Type | CABTITE BP 5MM PA | Version |
| Order No. | 2652330000 | Blind plug, Cabtite (cable entry system), Polyamide, white, Height: 12 |
| GTIN (EAN) | 4050118661835 | mm, Width: 5 mm, Depth: 12 mm, -40 °C... 120 °C, IP66 |
| Qty. | 25 pc(s). | |
| Type | CABTITE BP 10MM PA | Version |
| Order No. | 2652380000 | Blind plug, Cabtite (cable entry system), Polyamide, white, Height: 16 |
| GTIN (EAN) | 4050118662481 | mm, Width: 10 mm, Depth: 16 mm, -40 °C... 120 °C, IP66 |
| Qty. | 25 pc(s). | |

CABTITE CGS M63 BK**Weidmüller Interface GmbH & Co. KG**

Klingenbergstraße 26

D-32758 Detmold

Germany

www.weidmueller.com**Replacement parts****Cabtite - Separable Cable Glands**

For metric M20 to M63 through-holes, the Cabtite cable entry system offers separable cable glands for cables with and without plugs. In case of maintenance or changes in the system, pre-assembled cables with diameters of 2 to 35 mm can be inserted quickly and safely in panels or enclosures. Reliable sealing of IP66 in accordance with DIN EN 60529 and an absolutely secure fitting (strain relief based on DIN EN 62444) is ensured by placing slotted sealing elements with a wave cut around the cable before being inserted into one of the two halves of the cable gland. The separable system ensures easy and fast installation. After inserting the sealing element, the two halves of the cable gland are simply snapped together. A locknut, which is also separable, on the inside of the panel ensures a reliable and secure hold.

General ordering data

| Type | CABTITE LNS M63 BK | Version |
|------------|----------------------------|--------------------------------------------------------------------------|
| Order No. | 2584010000 | separable locknut, Cabtite (cable entry system), Polyamide, glass fibre- |
| GTIN (EAN) | 4050118617245 | reinforced, Deep black, Height: 72 mm, Width: 72 mm, Depth: 7 mm, |
| Qty. | 5 pc(s). | -40 °C...120 °C |