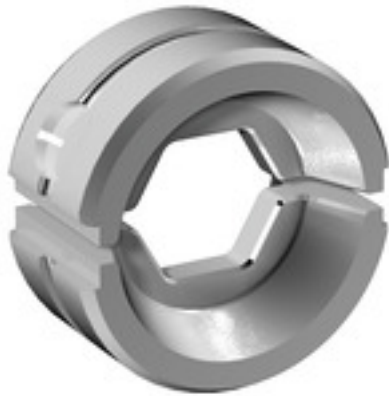


ES EPG/HPG 60 HEX 300**Weidmüller Interface GmbH & Co. KG**

Klingenbergstraße 26

D-32758 Detmold

Germany

www.weidmueller.com**Similar to illustration****Crimping tools for cable lugs, connectors and wire-end ferrules with interchangeable inserts**

- extremely fast processing thanks to hydraulic support
- large processing range up to 300 mm²
- 270° revolving quick-action crimping head
- automatic pressure limitation and monitoring via pressure sensor
- electronic control and monitoring of the crimping process
- Saving of all crimping cycles and error messages to internal memory
- Reading of all cycles and error messages via USB
- Li-ion rechargeable battery with charge status indicator: 18 V, 2 Ah

General ordering data

Version	Crimping tool insert, Hexagonal crimp
Order No.	2505270000
Type	ES EPG/HPG 60 HEX 300
GTIN (EAN)	4050118519655
Qty.	1 pc(s).

ES EPG/HPG 60 HEX 300**Weidmüller Interface GmbH & Co. KG**

Klingenbergstraße 26

D-32758 Detmold

Germany

www.weidmueller.com**Technical data****Dimensions and weights**

Depth	22 mm	Depth (inches)	0.866 inch
Height	42 mm	Height (inches)	1.654 inch
Width	42 mm	Width (inches)	1.654 inch
Net weight	97 g		

Crimp inserts

Crimp cross-section aluminium	240	Crimp cross-section copper	300
Crimping width	5 mm	Crimping width in mm	5
Identification number	32		

Description of contact

Conductor cross-section, max. AWG	600	Type of contact	DIN 46235 cable lug, DIN 46267 Part 1 cable lug
-----------------------------------	-----	-----------------	---

tool data crimping

Cable lug cross section	nominal	300 mm ²
Crimping type/profile	Hexagonal crimp	

Classifications

ETIM 6.0	EC001282	ETIM 7.0	EC001282
ETIM 8.0	EC001282	ETIM 9.0	EC001282
ECLASS 9.0	21-04-90-90	ECLASS 9.1	21-01-90-90
ECLASS 10.0	21-04-90-90	ECLASS 11.0	21-04-90-90
ECLASS 12.0	21-04-90-90	ECLASS 13.0	21-04-90-90

Environmental Product Compliance

REACH SVHC	/
------------	---

Downloads

Catalogues	Catalogues in PDF-format
------------	--

ES EPG/HPG 60 HEX 300

Weidmüller Interface GmbH & Co. KG

Klingenbergstraße 26

D-32758 Detmold

Germany

www.weidmueller.com

Accessories

Tools

**Crimping tools for cable lugs, connectors and wire-end ferrules with interchangeable inserts**

- extremely fast processing thanks to hydraulic support
- large processing range up to 300 mm²
- 270° revolving quick-action crimping head
- automatic pressure limitation and monitoring via pressure sensor
- electronic control and monitoring of the crimping process
- Saving of all crimping cycles and error messages to internal memory
- Reading of all cycles and error messages via USB
- Li-ion rechargeable battery with charge status indicator: 18 V, 2 Ah

General ordering data

Type	EPG 60	Version
Order No.	2453810000	Pressing tools, Tools, Pressing tool, 6mm ² , 300mm ² , Hexagonal crimp,
GTIN (EAN)	4050118468434	WM crimp, Indent crimp, Trapezoidal crimp, Oval crimping
Qty.	1 pc(s).	

Tools

**Crimping tools for cable lugs, connectors and wire-end ferrules with interchangeable inserts**

- extremely fast processing thanks to hydraulic support
- large processing range up to 400 mm²
- 360° revolving quick action crimping head
- automatic pressure limitation and monitoring via pressure sensor
- Additional features for APG series:
- electronic control and monitoring of the crimping process
- Saving of all crimping cycles and error messages to internal memory
- Reading of all cycles and error messages via USB

General ordering data

Type	HPG 60	Version
Order No.	2453820000	6mm ² , 300mm ² , Hexagonal crimp, WM crimp, Indent crimp,
GTIN (EAN)	4050118468427	Trapezoidal crimp, Oval crimping
Qty.	1 pc(s).	

ES EPG/HPG 60 HEX 300

Weidmüller Interface GmbH & Co. KG

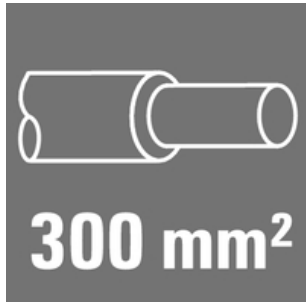
Klingenbergstraße 26

D-32758 Detmold

Germany

www.weidmueller.com

Accessories

300 mm²

The use of insulated connectors guarantees users consistent electrical connection quality in the long term.

- Wide range of insulated and non-insulated cable lugs and connectors
- Tubular cable lugs according to current market standards (Euroseries)
- Compression cable lugs acc. to DIN 46235
- Sheet metal cable lugs acc. to DIN 46234
- Insulated ring cable lugs to DIN 46237
- Insulated pin cable lugs to DIN 46231

General ordering data

Type	KP-M20/-300	Version
Order No.	1498470000	cable lug, terminal end, 300 mm ²
GTIN (EAN)	4050118307849	
Qty.	10 pc(s).	
Type	KP-M14/-300	Version
Order No.	1498550000	cable lug, terminal end, 300 mm ²
GTIN (EAN)	4050118307924	
Qty.	10 pc(s).	
Type	KP-M10/-300	Version
Order No.	1498440000	cable lug, terminal end, 300 mm ²
GTIN (EAN)	4050118307764	
Qty.	10 pc(s).	
Type	KP-M16/-300	Version
Order No.	1498460000	cable lug, terminal end, 300 mm ²
GTIN (EAN)	4050118307870	
Qty.	10 pc(s).	
Type	KP-M12/-300	Version
Order No.	1498450000	cable lug, terminal end, 300 mm ²
GTIN (EAN)	4050118307788	
Qty.	10 pc(s).	