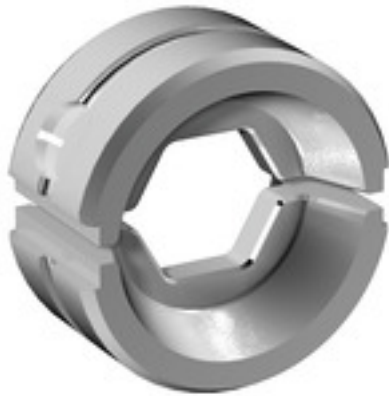


ES EPG/HPG 60 HEX 16**Weidmüller Interface GmbH & Co. KG**

Klingenbergstraße 26

D-32758 Detmold

Germany

www.weidmueller.com**Similar to illustration****Crimping tools for cable lugs, connectors and wire-end ferrules with interchangeable inserts**

- extremely fast processing thanks to hydraulic support
- large processing range up to 300 mm²
- 270° revolving quick-action crimping head
- automatic pressure limitation and monitoring via pressure sensor
- electronic control and monitoring of the crimping process
- Saving of all crimping cycles and error messages to internal memory
- Reading of all cycles and error messages via USB
- Li-ion rechargeable battery with charge status indicator: 18 V, 2 Ah

General ordering data

Version	Crimping tool insert, Hexagonal crimp
Order No.	2505170000
Type	ES EPG/HPG 60 HEX 16
GTIN (EAN)	4050118519549
Qty.	1 pc(s).

ES EPG/HPG 60 HEX 16**Weidmüller Interface GmbH & Co. KG**

Klingenbergstraße 26

D-32758 Detmold

Germany

www.weidmueller.com**Technical data****Dimensions and weights**

Depth	22 mm	Depth (inches)	0.866 inch
Height	42 mm	Height (inches)	1.654 inch
Width	42 mm	Width (inches)	1.654 inch
Net weight	170 g		

Crimp inserts

Crimp cross-section copper	16	Crimping width	5 mm
Crimping width in mm	12	Identification number	8

Description of contact

Conductor cross-section, max. AWG	6	Type of contact	DIN 46235 cable lug, DIN 46267 Part 1 cable lug
-----------------------------------	---	-----------------	---

tool data crimping

Cable lug cross section	nominal	16 mm ²
Crimping type/profile	Hexagonal crimp	

Classifications

ETIM 6.0	EC001282	ETIM 7.0	EC001282
ETIM 8.0	EC001282	ETIM 9.0	EC001282
ECLASS 9.0	21-04-90-90	ECLASS 9.1	21-01-90-90
ECLASS 10.0	21-04-90-90	ECLASS 11.0	21-04-90-90
ECLASS 12.0	21-04-90-90	ECLASS 13.0	21-04-90-90
ECLASS 14.0	21-04-90-90		

Environmental Product Compliance

REACH SVHC	/
RoHS Compliance Status	Compliant without exemption

Downloads

Catalogues	Catalogues in PDF-format
------------	--

ES EPG/HPG 60 HEX 16

Weidmüller Interface GmbH & Co. KG

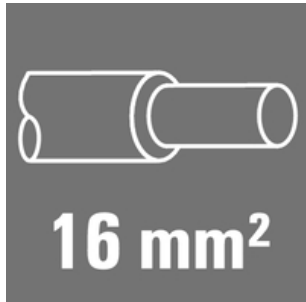
Klingenbergstraße 26

D-32758 Detmold

Germany

www.weidmueller.com

Accessories

16 mm²

The use of insulated connectors guarantees users consistent electrical connection quality in the long term.

- Wide range of insulated and non-insulated cable lugs and connectors
- Tubular cable lugs according to current market standards (Euroseries)
- Compression cable lugs acc. to DIN 46235
- Sheet metal cable lugs acc. to DIN 46234
- Insulated ring cable lugs to DIN 46237
- Insulated pin cable lugs to DIN 46231

General ordering data

Type	KRN-M8/-16	Version
Order No.	1496990000	cable lug, terminal end, 16 mm ²
GTIN (EAN)	4050118306514	
Qty.	100 pc(s).	
Type	KRN-M12/-16	Version
Order No.	1497010000	cable lug, terminal end, 16 mm ²
GTIN (EAN)	4050118306538	
Qty.	100 pc(s).	
Type	KRN-M10/-16	Version
Order No.	1497000000	cable lug, terminal end, 16 mm ²
GTIN (EAN)	4050118306460	
Qty.	100 pc(s).	
Type	KRN-M5/-16	Version
Order No.	1496970000	cable lug, terminal end, 16 mm ²
GTIN (EAN)	4050118306569	
Qty.	100 pc(s).	
Type	KRN-M6/-16	Version
Order No.	1496980000	cable lug, terminal end, 16 mm ²
GTIN (EAN)	4050118306583	
Qty.	100 pc(s).	

ES EPG/HPG 60 HEX 16

Weidmüller Interface GmbH & Co. KG

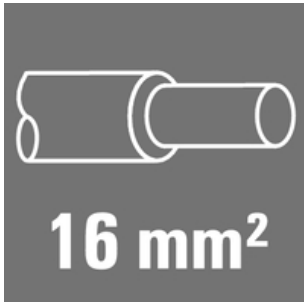
Klingenbergstraße 26

D-32758 Detmold

Germany

www.weidmueller.com

Accessories

16 mm²

The use of insulated connectors guarantees users consistent electrical connection quality in the long term.

- Wide range of insulated and non-insulated cable lugs and connectors
- Tubular cable lugs according to current market standards (Euroseries)
- Compression cable lugs acc. to DIN 46235
- Sheet metal cable lugs acc. to DIN 46234
- Insulated ring cable lugs to DIN 46237
- Insulated pin cable lugs to DIN 46231

General ordering data

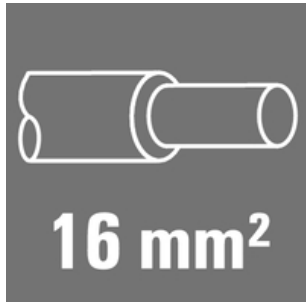
Type	KWN-M8/-16 90	Version
Order No.	1497100000	cable lug, terminal end, 16 mm ²
GTIN (EAN)	4050118306804	
Qty.	100 pc(s).	
Type	KWN-M12/-16 90	Version
Order No.	1497120000	cable lug, terminal end, 16 mm ²
GTIN (EAN)	4050118306736	
Qty.	100 pc(s).	
Type	KWN-M5/-16 90	Version
Order No.	1497080000	cable lug, terminal end, 16 mm ²
GTIN (EAN)	4050118306392	
Qty.	100 pc(s).	
Type	KWN-M6/16 90	Version
Order No.	1497090000	cable lug, terminal end, 16 mm ²
GTIN (EAN)	4050118306743	
Qty.	100 pc(s).	
Type	KWN-M10/-16 90	Version
Order No.	1497110000	cable lug, terminal end, 16 mm ²
GTIN (EAN)	4050118306705	
Qty.	100 pc(s).	

ES EPG/HPG 60 HEX 16

Weidmüller Interface GmbH & Co. KG
 Klingenbergstraße 26
 D-32758 Detmold
 Germany

www.weidmueller.com

Accessories

16 mm²

The use of insulated connectors guarantees users consistent electrical connection quality in the long term.

- Wide range of insulated and non-insulated cable lugs and connectors
- Tubular cable lugs according to current market standards (Euroseries)
- Compression cable lugs acc. to DIN 46235
- Sheet metal cable lugs acc. to DIN 46234
- Insulated ring cable lugs to DIN 46237
- Insulated pin cable lugs to DIN 46231

General ordering data

Type	KWN-M6/-16 45	Version
Order No.	1496870000	cable lug, terminal end, 16 mm ²
GTIN (EAN)	4050118306446	
Qty.	100 pc(s).	
Type	KWN-M10/-16 45	Version
Order No.	1496890000	cable lug, terminal end, 16 mm ²
GTIN (EAN)	4050118306194	
Qty.	100 pc(s).	
Type	KWN-M8/-16 45	Version
Order No.	1496880000	cable lug, terminal end, 16 mm ²
GTIN (EAN)	4050118306422	
Qty.	100 pc(s).	
Type	KWN-M5/-16 45	Version
Order No.	1496850000	cable lug, terminal end, 16 mm ²
GTIN (EAN)	4050118306408	
Qty.	100 pc(s).	

16 mm²

The use of insulated connectors guarantees users consistent electrical connection quality in the long term.

- Wide range of insulated and non-insulated cable lugs and connectors
- Tubular cable lugs according to current market standards (Euroseries)
- Compression cable lugs acc. to DIN 46235
- Sheet metal cable lugs acc. to DIN 46234
- Insulated ring cable lugs to DIN 46237
- Insulated pin cable lugs to DIN 46231

General ordering data

Type	KWPN-M6/-16 90	Version
Order No.	1497440000	cable lug, terminal end, 16 mm ²
GTIN (EAN)	4050118306644	
Qty.	100 pc(s).	

ES EPG/HPG 60 HEX 16

Weidmüller Interface GmbH & Co. KG

Klingenbergstraße 26

D-32758 Detmold

Germany

www.weidmueller.com

Accessories

Type	KWPN-M12/-16 90	Version
Order No.	1497480000	cable lug, terminal end, 16 mm ²
GTIN (EAN)	4050118306866	
Qty.	100 pc(s).	
Type	KWPN-M8/-16 90	Version
Order No.	1497450000	cable lug, terminal end, 16 mm ²
GTIN (EAN)	4050118306873	
Qty.	100 pc(s).	
Type	KWPN-M10/-16 90	Version
Order No.	1497470000	cable lug, terminal end, 16 mm ²
GTIN (EAN)	4050118307016	
Qty.	100 pc(s).	

16 mm²

The use of insulated connectors guarantees users consistent electrical connection quality in the long term.

- Wide range of insulated and non-insulated cable lugs and connectors
- Tubular cable lugs according to current market standards (Euroseries)
- Compression cable lugs acc. to DIN 46235
- Sheet metal cable lugs acc. to DIN 46234
- Insulated ring cable lugs to DIN 46237
- Insulated pin cable lugs to DIN 46231

General ordering data

Type	VPN/-16	Version
Order No.	1498630000	cable lug, terminal end, 16 mm ² , 16 mm ²
GTIN (EAN)	4050118307856	
Qty.	100 pc(s).	

ES EPG/HPG 60 HEX 16

Weidmüller Interface GmbH & Co. KG
Klingenbergstraße 26
D-32758 Detmold
Germany

www.weidmueller.com

Accessories

Tools



Crimping tools for cable lugs, connectors and wire-end ferrules with interchangeable inserts

- extremely fast processing thanks to hydraulic support
- large processing range up to 400 mm²
- 360° revolving quick action crimping head
- automatic pressure limitation and monitoring via pressure sensor
- Additional features for APG series:
- electronic control and monitoring of the crimping process
- Saving of all crimping cycles and error messages to internal memory
- Reading of all cycles and error messages via USB

General ordering data

Type	HPG 60	Version
Order No.	2453820000	6mm ² , 300mm ² , Hexagonal crimp, WM crimp, Indent crimp,
GTIN (EAN)	4050118468427	Trapezoidal crimp, Oval crimping
Qty.	1 pc(s).	

16 mm²



The use of insulated connectors guarantees users consistent electrical connection quality in the long term.

- Wide range of insulated and non-insulated cable lugs and connectors
- Tubular cable lugs according to current market standards (Euroseries)
- Compression cable lugs acc. to DIN 46235
- Sheet metal cable lugs acc. to DIN 46234
- Insulated ring cable lugs to DIN 46237
- Insulated pin cable lugs to DIN 46231

General ordering data

Type	KSN/-16	Version
Order No.	1492790000	cable lug, terminal end, 16 mm ² , 16 mm ²
GTIN (EAN)	4050118302745	
Qty.	100 pc(s).	

ES EPG/HPG 60 HEX 16

Weidmüller Interface GmbH & Co. KG

Klingenbergstraße 26

D-32758 Detmold

Germany

www.weidmueller.com

Accessories

16 mm²

The use of insulated connectors guarantees users consistent electrical connection quality in the long term.

- Wide range of insulated and non-insulated cable lugs and connectors
- Tubular cable lugs according to current market standards (Euroseries)
- Compression cable lugs acc. to DIN 46235
- Sheet metal cable lugs acc. to DIN 46234
- Insulated ring cable lugs to DIN 46237
- Insulated pin cable lugs to DIN 46231

General ordering data

Type	VSTN/16	Version
Order No.	1493040000	cable lug, terminal end, 16 mm ² , 16 mm ²
GTIN (EAN)	4050118302981	
Qty.	100 pc(s).	

16 mm²

The use of insulated connectors guarantees users consistent electrical connection quality in the long term.

- Wide range of insulated and non-insulated cable lugs and connectors
- Tubular cable lugs according to current market standards (Euroseries)
- Compression cable lugs acc. to DIN 46235
- Sheet metal cable lugs acc. to DIN 46234
- Insulated ring cable lugs to DIN 46237
- Insulated pin cable lugs to DIN 46231

General ordering data

Type	KQNG-M8/-16	Version
Order No.	1492710000	cable lug, terminal end, 16 mm ² , 16 mm ²
GTIN (EAN)	4050118302677	
Qty.	50 pc(s).	

Type	KQNG-M6/-16	Version
Order No.	1492700000	cable lug, terminal end, 16 mm ² , 16 mm ²
GTIN (EAN)	4050118302493	
Qty.	50 pc(s).	

ES EPG/HPG 60 HEX 16

Weidmüller Interface GmbH & Co. KG

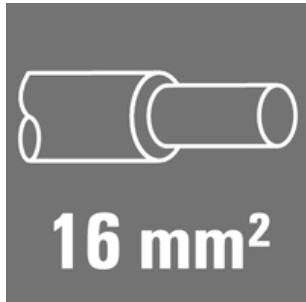
Klingenbergstraße 26

D-32758 Detmold

Germany

www.weidmueller.com

Accessories

16 mm²

The use of insulated connectors guarantees users consistent electrical connection quality in the long term.

- Wide range of insulated and non-insulated cable lugs and connectors
- Tubular cable lugs according to current market standards (Euroseries)
- Compression cable lugs acc. to DIN 46235
- Sheet metal cable lugs acc. to DIN 46234
- Insulated ring cable lugs to DIN 46237
- Insulated pin cable lugs to DIN 46231

General ordering data

Type	KQN-M10/-16	Version
Order No.	1494100000	cable lug, terminal end, 16 mm ²
GTIN (EAN)	4050118303728	
Qty.	100 pc(s).	
Type	KQN-M5/-16	Version
Order No.	1494070000	cable lug, terminal end, 16 mm ²
GTIN (EAN)	4050118303650	
Qty.	100 pc(s).	
Type	KQN-M12/-16	Version
Order No.	1494110000	cable lug, terminal end, 16 mm ²
GTIN (EAN)	4050118303773	
Qty.	100 pc(s).	
Type	KQN-M6/-16	Version
Order No.	1494080000	cable lug, terminal end, 16 mm ²
GTIN (EAN)	4050118303636	
Qty.	100 pc(s).	
Type	KQN-M8/-16	Version
Order No.	1494090000	cable lug, terminal end, 16 mm ²
GTIN (EAN)	4050118303742	
Qty.	100 pc(s).	

ES EPG/HPG 60 HEX 16

Weidmüller Interface GmbH & Co. KG

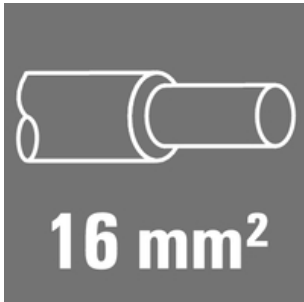
Klingenbergstraße 26

D-32758 Detmold

Germany

www.weidmueller.com

Accessories

16 mm²

The use of insulated connectors guarantees users consistent electrical connection quality in the long term.

- Wide range of insulated and non-insulated cable lugs and connectors
- Tubular cable lugs according to current market standards (Euroseries)
- Compression cable lugs acc. to DIN 46235
- Sheet metal cable lugs acc. to DIN 46234
- Insulated ring cable lugs to DIN 46237
- Insulated pin cable lugs to DIN 46231

General ordering data

Type	VSTN/-16	Version
Order No.	1497140000	cable lug, terminal end, 16 mm ² , 16 mm ²
GTIN (EAN)	4050118306620	
Qty.	50 pc(s).	

Tools



Crimping tools for cable lugs, connectors and wire-end ferrules with interchangeable inserts

- extremely fast processing thanks to hydraulic support
- large processing range up to 300 mm²
- 270° revolving quick-action crimping head
- automatic pressure limitation and monitoring via pressure sensor
- electronic control and monitoring of the crimping process
- Saving of all crimping cycles and error messages to internal memory
- Reading of all cycles and error messages via USB
- Li-ion rechargeable battery with charge status indicator: 18 V, 2 Ah

General ordering data

Type	EPG 60	Version
Order No.	2453810000	Pressing tools, Tools, Pressing tool, 6mm ² , 300mm ² , Hexagonal crimp,
GTIN (EAN)	4050118468434	WM crimp, Indent crimp, Trapezoidal crimp, Oval crimping
Qty.	1 pc(s).	

ES EPG/HPG 60 HEX 16

Weidmüller Interface GmbH & Co. KG

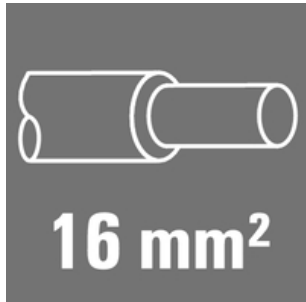
Klingenbergstraße 26

D-32758 Detmold

Germany

www.weidmueller.com

Accessories

16 mm²

The use of insulated connectors guarantees users consistent electrical connection quality in the long term.

- Wide range of insulated and non-insulated cable lugs and connectors
- Tubular cable lugs according to current market standards (Euroseries)
- Compression cable lugs acc. to DIN 46235
- Sheet metal cable lugs acc. to DIN 46234
- Insulated ring cable lugs to DIN 46237
- Insulated pin cable lugs to DIN 46231

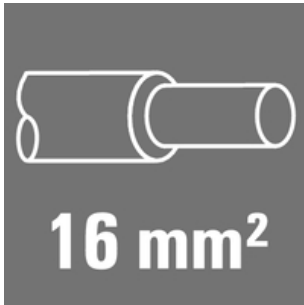
General ordering data

Type	KP-M10/-16	Version
Order No.	1497950000	cable lug, terminal end, 16 mm ²
GTIN (EAN)	4050118307450	
Qty.	100 pc(s).	
Type	KP-M8/-16	Version
Order No.	1497940000	cable lug, terminal end, 16 mm ²
GTIN (EAN)	4050118307269	
Qty.	100 pc(s).	
Type	KP-M6/-16	Version
Order No.	1497930000	cable lug, terminal end, 16 mm ²
GTIN (EAN)	4050118307290	
Qty.	100 pc(s).	
Type	KP-M12/-16	Version
Order No.	1497960000	cable lug, terminal end, 16 mm ²
GTIN (EAN)	4050118307436	
Qty.	100 pc(s).	
Type	KP-M5/-16	Version
Order No.	1497920000	cable lug, terminal end, 16 mm ²
GTIN (EAN)	4050118307542	
Qty.	100 pc(s).	

ES EPG/HPG 60 HEX 16

Weidmüller Interface GmbH & Co. KG
Klingenbergstraße 26
D-32758 Detmold
Germany

www.weidmueller.com

Accessories**16 mm²**

The use of insulated connectors guarantees users consistent electrical connection quality in the long term.

- Wide range of insulated and non-insulated cable lugs and connectors
- Tubular cable lugs according to current market standards (Euroseries)
- Compression cable lugs acc. to DIN 46235
- Sheet metal cable lugs acc. to DIN 46234
- Insulated ring cable lugs to DIN 46237
- Insulated pin cable lugs to DIN 46231

General ordering data

Type	VPLN/-16	Version
Order No.	1492900000	cable lug, terminal end, 16 mm ² , 16 mm ²
GTIN (EAN)	4050118302714	
Qty.	100 pc(s).	