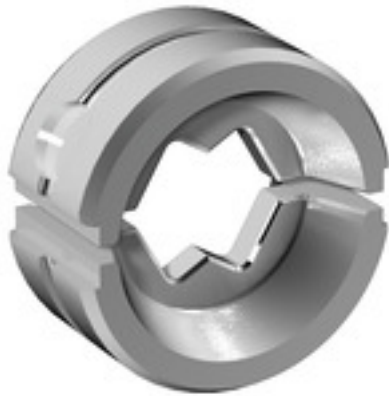


ES EPG/HPG 60 WM 185**Weidmüller Interface GmbH & Co. KG**

Klingenbergstraße 26

D-32758 Detmold

Germany

www.weidmueller.com**Similar to illustration****Crimping tools for cable lugs, connectors and wire-end ferrules with interchangeable inserts**

- extremely fast processing thanks to hydraulic support
- large processing range up to 300 mm²
- 270° revolving quick-action crimping head
- automatic pressure limitation and monitoring via pressure sensor
- electronic control and monitoring of the crimping process
- Saving of all crimping cycles and error messages to internal memory
- Reading of all cycles and error messages via USB
- Li-ion rechargeable battery with charge status indicator: 18 V, 2 Ah

General ordering data

Version	Crimping tool insert, WM crimp
Order No.	2469630000
Type	ES EPG/HPG 60 WM 185
GTIN (EAN)	4050118484038
Qty.	1 pc(s).

ES EPG/HPG 60 WM 185**Weidmüller Interface GmbH & Co. KG**

Klingenbergstraße 26

D-32758 Detmold

Germany

www.weidmueller.com**Technical data****Dimensions and weights**

Depth	22 mm	Depth (inches)	0.866 inch
Height	42 mm	Height (inches)	1.654 inch
Width	42 mm	Width (inches)	1.654 inch
Net weight	131 g		

Crimp inserts

Crimp cross-section copper	185	Crimping width	5 mm
Crimping width in mm	5		

Description of contact

Conductor cross-section, max. AWG	6/0	Type of contact	Euro series cable lug
-----------------------------------	-----	-----------------	-----------------------

tool data crimping

Cable lug cross section	nominal	185 mm ²
Crimping type/profile	WM crimp	

Classifications

ETIM 6.0	EC001282	ETIM 7.0	EC001282
ETIM 8.0	EC001282	ETIM 9.0	EC001282
ECLASS 9.0	21-04-90-90	ECLASS 9.1	21-01-90-90
ECLASS 10.0	21-04-90-90	ECLASS 11.0	21-04-90-90
ECLASS 12.0	21-04-90-90	ECLASS 13.0	21-04-90-90
ECLASS 14.0	21-04-90-90		

Environmental Product Compliance

REACH SVHC	/
RoHS Compliance Status	Compliant without exemption

Downloads

Catalogues	Catalogues in PDF-format
------------	--

ES EPG/HPG 60 WM 185

Weidmüller Interface GmbH & Co. KG

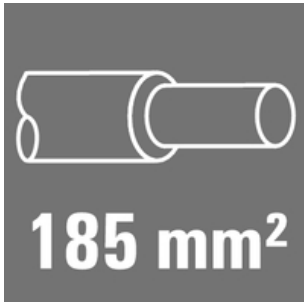
Klingenbergstraße 26

D-32758 Detmold

Germany

www.weidmueller.com

Accessories

185 mm²

The use of insulated connectors guarantees users consistent electrical connection quality in the long term.

- Wide range of insulated and non-insulated cable lugs and connectors
- Tubular cable lugs according to current market standards (Euroseries)
- Compression cable lugs acc. to DIN 46235
- Sheet metal cable lugs acc. to DIN 46234
- Insulated ring cable lugs to DIN 46237
- Insulated pin cable lugs to DIN 46231

General ordering data

Type	KWPN-M20/-185 90	Version
Order No.	1496720000	cable lug, terminal end, 185 mm ²
GTIN (EAN)	4050118306187	
Qty.	25 pc(s).	
Type	KWPN-M10/-185 90	Version
Order No.	1496690000	cable lug, terminal end, 185 mm ²
GTIN (EAN)	4050118306170	
Qty.	25 pc(s).	
Type	KWPN-M16/-185 90	Version
Order No.	1496710000	cable lug, terminal end, 185 mm ²
GTIN (EAN)	4050118306262	
Qty.	25 pc(s).	
Type	KWPN-M8/-185 90	Version
Order No.	1496800000	cable lug, terminal end, 185 mm ²
GTIN (EAN)	4050118306316	
Qty.	25 pc(s).	
Type	KWPN-M12/-185 90	Version
Order No.	1496700000	cable lug, terminal end, 185 mm ²
GTIN (EAN)	4050118306323	
Qty.	25 pc(s).	

ES EPG/HPG 60 WM 185

Weidmüller Interface GmbH & Co. KG

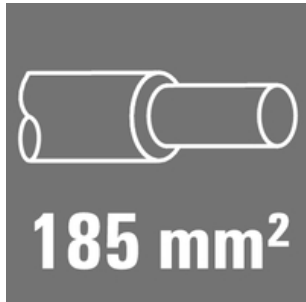
Klingenbergstraße 26

D-32758 Detmold

Germany

www.weidmueller.com

Accessories

185 mm²

The use of insulated connectors guarantees users consistent electrical connection quality in the long term.

- Wide range of insulated and non-insulated cable lugs and connectors
- Tubular cable lugs according to current market standards (Euroseries)
- Compression cable lugs acc. to DIN 46235
- Sheet metal cable lugs acc. to DIN 46234
- Insulated ring cable lugs to DIN 46237
- Insulated pin cable lugs to DIN 46231

General ordering data

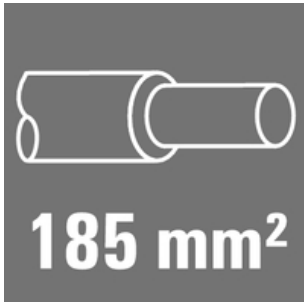
Type	KRN-M14/-185	Version
Order No.	1497250000	cable lug, terminal end, 185 mm ²
GTIN (EAN)	4050118306880	
Qty.	25 pc(s).	
Type	KRN-M20/-185	Version
Order No.	1495470000	cable lug, terminal end, 185 mm ²
GTIN (EAN)	4050118305005	
Qty.	25 pc(s).	
Type	KRN-M8/-185	Version
Order No.	1497290000	cable lug, terminal end, 185 mm ²
GTIN (EAN)	4050118306897	
Qty.	25 pc(s).	
Type	KRN-M16/-185	Version
Order No.	1495450000	cable lug, terminal end, 185 mm ²
GTIN (EAN)	4050118305036	
Qty.	25 pc(s).	
Type	KRN-M12/-185	Version
Order No.	1495440000	cable lug, terminal end, 185 mm ²
GTIN (EAN)	4050118304947	
Qty.	25 pc(s).	
Type	KRN-M10/-185	Version
Order No.	1495430000	cable lug, terminal end, 185 mm ²
GTIN (EAN)	4050118304985	
Qty.	25 pc(s).	

ES EPG/HPG 60 WM 185**Weidmüller Interface GmbH & Co. KG**

Klingenbergstraße 26

D-32758 Detmold

Germany

www.weidmueller.com**Accessories****185 mm²**

The use of insulated connectors guarantees users consistent electrical connection quality in the long term.

- Wide range of insulated and non-insulated cable lugs and connectors
- Tubular cable lugs according to current market standards (Euroseries)
- Compression cable lugs acc. to DIN 46235
- Sheet metal cable lugs acc. to DIN 46234
- Insulated ring cable lugs to DIN 46237
- Insulated pin cable lugs to DIN 46231

General ordering data

Type	VPN/-185	Version
Order No.	1498720000	cable lug, terminal end, 185 mm ² , 185 mm ²
GTIN (EAN)	4050118308051	
Qty.	25 pc(s).	

185 mm²

The use of insulated connectors guarantees users consistent electrical connection quality in the long term.

- Wide range of insulated and non-insulated cable lugs and connectors
- Tubular cable lugs according to current market standards (Euroseries)
- Compression cable lugs acc. to DIN 46235
- Sheet metal cable lugs acc. to DIN 46234
- Insulated ring cable lugs to DIN 46237
- Insulated pin cable lugs to DIN 46231

General ordering data

Type	VSTN/-185	Version
Order No.	1497390000	cable lug, terminal end, 185 mm ² , 185 mm ²
GTIN (EAN)	4050118306798	
Qty.	25 pc(s).	

ES EPG/HPG 60 WM 185

Weidmüller Interface GmbH & Co. KG

Klingenbergstraße 26

D-32758 Detmold

Germany

www.weidmueller.com

Accessories

185 mm²

The use of insulated connectors guarantees users consistent electrical connection quality in the long term.

- Wide range of insulated and non-insulated cable lugs and connectors
- Tubular cable lugs according to current market standards (Euroseries)
- Compression cable lugs acc. to DIN 46235
- Sheet metal cable lugs acc. to DIN 46234
- Insulated ring cable lugs to DIN 46237
- Insulated pin cable lugs to DIN 46231

General ordering data

Type	KP-M8/-185	Version
Order No.	1498540000	cable lug, terminal end, 185 mm ²
GTIN (EAN)	4050118307894	
Qty.	25 pc(s).	
Type	KP-M14/-185	Version
Order No.	1498590000	cable lug, terminal end, 185 mm ²
GTIN (EAN)	4050118307887	
Qty.	25 pc(s).	
Type	KP-M10/-185	Version
Order No.	1498350000	cable lug, terminal end, 185 mm ²
GTIN (EAN)	4050118307665	
Qty.	25 pc(s).	
Type	KP-M20/-185	Version
Order No.	1498380000	cable lug, terminal end, 185 mm ²
GTIN (EAN)	4050118307757	
Qty.	25 pc(s).	
Type	KP-M12/-185	Version
Order No.	1498360000	cable lug, terminal end, 185 mm ²
GTIN (EAN)	4050118307726	
Qty.	25 pc(s).	
Type	KP-M16/-185	Version
Order No.	1498370000	cable lug, terminal end, 185 mm ²
GTIN (EAN)	4050118307733	
Qty.	25 pc(s).	

ES EPG/HPG 60 WM 185

Weidmüller Interface GmbH & Co. KG

Klingenbergstraße 26

D-32758 Detmold

Germany

www.weidmueller.com

Accessories

Tools

**Crimping tools for cable lugs, connectors and wire-end ferrules with interchangeable inserts**

- extremely fast processing thanks to hydraulic support
- large processing range up to 300 mm²
- 270° revolving quick-action crimping head
- automatic pressure limitation and monitoring via pressure sensor
- electronic control and monitoring of the crimping process
- Saving of all crimping cycles and error messages to internal memory
- Reading of all cycles and error messages via USB
- Li-ion rechargeable battery with charge status indicator: 18 V, 2 Ah

General ordering data

Type	EPG 60	Version
Order No.	2453810000	Pressing tools, Tools, Pressing tool, 6mm ² , 300mm ² , Hexagonal crimp,
GTIN (EAN)	4050118468434	WM crimp, Indent crimp, Trapezoidal crimp, Oval crimping
Qty.	1 pc(s).	

Tools

**Crimping tools for cable lugs, connectors and wire-end ferrules with interchangeable inserts**

- extremely fast processing thanks to hydraulic support
- large processing range up to 400 mm²
- 360° revolving quick action crimping head
- automatic pressure limitation and monitoring via pressure sensor
- Additional features for APG series:
- electronic control and monitoring of the crimping process
- Saving of all crimping cycles and error messages to internal memory
- Reading of all cycles and error messages via USB

General ordering data

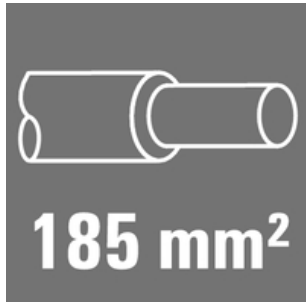
Type	HPG 60	Version
Order No.	2453820000	6mm ² , 300mm ² , Hexagonal crimp, WM crimp, Indent crimp,
GTIN (EAN)	4050118468427	Trapezoidal crimp, Oval crimping
Qty.	1 pc(s).	

ES EPG/HPG 60 WM 185

Weidmüller Interface GmbH & Co. KG
 Klingenbergstraße 26
 D-32758 Detmold
 Germany

www.weidmueller.com

Accessories

185 mm²

The use of insulated connectors guarantees users consistent electrical connection quality in the long term.

- Wide range of insulated and non-insulated cable lugs and connectors
- Tubular cable lugs according to current market standards (Euroseries)
- Compression cable lugs acc. to DIN 46235
- Sheet metal cable lugs acc. to DIN 46234
- Insulated ring cable lugs to DIN 46237
- Insulated pin cable lugs to DIN 46231

General ordering data

Type	KWN-M10/-185 90	Version
Order No.	1494540000	cable lug, terminal end, 185 mm ²
GTIN (EAN)	4050118304176	
Qty.	25 pc(s).	
Type	KWN-M20/-185 90	Version
Order No.	1494580000	cable lug, terminal end, 185 mm ²
GTIN (EAN)	4050118304336	
Qty.	25 pc(s).	
Type	KWN-M12/-185 90	Version
Order No.	1494550000	cable lug, terminal end, 185 mm ²
GTIN (EAN)	4050118304213	
Qty.	25 pc(s).	
Type	KWN-M16/-185 90	Version
Order No.	1494570000	cable lug, terminal end, 185 mm ²
GTIN (EAN)	4050118304329	
Qty.	25 pc(s).	

185 mm²

The use of insulated connectors guarantees users consistent electrical connection quality in the long term.

- Wide range of insulated and non-insulated cable lugs and connectors
- Tubular cable lugs according to current market standards (Euroseries)
- Compression cable lugs acc. to DIN 46235
- Sheet metal cable lugs acc. to DIN 46234
- Insulated ring cable lugs to DIN 46237
- Insulated pin cable lugs to DIN 46231

General ordering data

Type	KWN-M16/-185 45	Version
Order No.	1495370000	cable lug, terminal end, 185 mm ²
GTIN (EAN)	4050118305074	
Qty.	20 pc(s).	

ES EPG/HPG 60 WM 185

Weidmüller Interface GmbH & Co. KG

Klingenbergstraße 26

D-32758 Detmold

Germany

www.weidmueller.com

Accessories

Type	KWN-M20/-185 45	Version
Order No.	1495380000	cable lug, terminal end, 185 mm ²
GTIN (EAN)	4050118305135	
Qty.	20 pc(s).	
Type	KWN-M12/-185 45	Version
Order No.	1495350000	cable lug, terminal end, 185 mm ²
GTIN (EAN)	4050118305012	
Qty.	20 pc(s).	
Type	KWN-M10/-185 45	Version
Order No.	1495340000	cable lug, terminal end, 185 mm ²
GTIN (EAN)	4050118304589	
Qty.	20 pc(s).	

185 mm²

The use of insulated connectors guarantees users consistent electrical connection quality in the long term.

- Wide range of insulated and non-insulated cable lugs and connectors
- Tubular cable lugs according to current market standards (Euroseries)
- Compression cable lugs acc. to DIN 46235
- Sheet metal cable lugs acc. to DIN 46234
- Insulated ring cable lugs to DIN 46237
- Insulated pin cable lugs to DIN 46231

General ordering data

Type	KRN-M12/-185 S	Version
Order No.	1494990000	cable lug, terminal end, 185 mm ²
GTIN (EAN)	4050118304169	
Qty.	10 pc(s).	
Type	KRN-M16/-185 S	Version
Order No.	1495000000	cable lug, terminal end, 185 mm ²
GTIN (EAN)	4050118304367	
Qty.	10 pc(s).	
Type	KRN-M10/-185 S	Version
Order No.	1494980000	cable lug, terminal end, 185 mm ²
GTIN (EAN)	4050118304497	
Qty.	10 pc(s).	