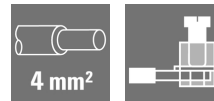


**HDC AOC 6 MS****Weidmüller Interface GmbH & Co. KG**

Klingenbergstraße 26

D-32758 Detmold

Germany

[www.weidmueller.com](http://www.weidmueller.com)

A heavy-duty connector consists of a connector insert and its protective housing. The insert is therefore the heart of the heavy-duty connector. It is responsible for electrical functioning. Connector inserts from Weidmüller are made from high-quality insulation materials, which allow secure transmission of high voltages in a tight space. Moreover, we use only a single type of plastic in our entire product line. This plastic is UL listed, and suitable for railway applications. This allows unlimited world-wide use of the RockStar® connector.

**General ordering data**

Version	HDC insert, Pin, 500 V, 40 A, Number of poles: 6, Screw connection, Size: 3
Order No.	<a href="#">2466810000</a>
Type	HDC AOC 6 MS
GTIN (EAN)	4050118501575
Qty.	1 pc(s).

## HDC AOC 6 MS

Weidmüller Interface GmbH &amp; Co. KG

Klingenbergstraße 26

D-32758 Detmold

Germany

www.weidmueller.com

## Technical data

## Dimensions and weights

Depth	34.8 mm	Depth (inches)	1.37 inch
Height	41.7 mm	Height (inches)	1.642 inch
Width	51 mm	Width (inches)	2.008 inch
Net weight	68.3 g		

## Temperatures

Limit temperature	125 °C ... -40 °C
-------------------	-------------------

## Dimensions

Width	51 mm
-------	-------

## General data

BG	3	Colour	Light Grey
Free from halogens	false	Material	Polycarbonate, glass fibre reinforced
Number of poles	6	Pollution severity	3
Rated current (DIN EN 61984)	40 A	Rated impulse voltage (DIN EN 61984)	6 kV
Rated voltage (DIN EN 61984)	500 V	Size	3
Type	Pin	Type of connection	Screw connection
UL 94 flammability rating	V-0		

## Connection data PE

Blade size, crosshead	0.6 x 3.5 mm	Stripping length PE connection	11 mm
-----------------------	--------------	--------------------------------	-------

## Power contact

Tightening torque, max.	1.5 Nm	Tightening torque, min.	1.2 Nm
-------------------------	--------	-------------------------	--------

## Signal contact

Tightening torque, max.	1.5 Nm	Tightening torque, min.	1.2 Nm
-------------------------	--------	-------------------------	--------

## Version

BG	3	Material	Polycarbonate, glass fibre reinforced
Size	3	Type of connection	Screw connection

## Classifications

ETIM 6.0	EC000438	ETIM 7.0	EC000438
ETIM 8.0	EC000438	ETIM 9.0	EC000438
ECLASS 9.0	27-44-02-05	ECLASS 9.1	27-44-02-05
ECLASS 10.0	27-44-02-05	ECLASS 11.0	27-44-02-05
ECLASS 12.0	27-44-02-05	ECLASS 13.0	27-44-02-05

## Environmental Product Compliance

REACH SVHC	Lead 7439-92-1 Potassium perfluorobutane sulfonate 29420-49-3
SCIP	b67daa31-7dca-434d-8290-da7fb52f83a2

### HDC AOC 6 MS

**Weidmüller Interface GmbH & Co. KG**

Klingenbergstraße 26

D-32758 Detmold

Germany

[www.weidmueller.com](http://www.weidmueller.com)

## Technical data

### Downloads

Engineering Data

[CAD data – STEP](#)

Catalogues

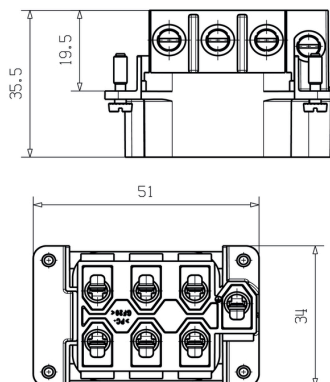
[Catalogues in PDF-format](#)

## HDC AOC 6 MS

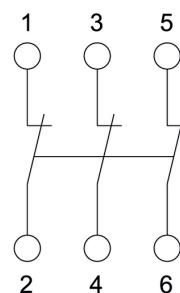
**Weidmüller Interface GmbH & Co. KG**  
Klingenbergstraße 26  
D-32758 Detmold  
Germany

[www.weidmueller.com](http://www.weidmueller.com)

## Drawings



## Connection diagram



Three-phase Anti-open Circuit Diagram