

AFS 4 2C 10-36V BK**Weidmüller Interface GmbH & Co. KG**

Klingenbergstraße 26

D-32758 Detmold

Germany

www.weidmueller.com**Product image**

In some applications it is useful to protect the feed through connection with a separate fuse. Fuse terminal blocks are made up of one terminal block bottom section with a fuse insertion carrier. The fuses vary from pivoting fuse levers and pluggable fuse holders to screwable closures and flat plug-in fuses.

General ordering data

| | |
|------------|--|
| Version | Fuse terminal, PUSH IN, 4 mm ² , 36 V, 6.3 A, black |
| Order No. | 2429870000 |
| Type | AFS 4 2C 10-36V BK |
| GTIN (EAN) | 4050118439588 |
| Qty. | 50 pc(s). |

AFS 4 2C 10-36V BK

Weidmüller Interface GmbH & Co. KG

Klingenbergstraße 26

D-32758 Detmold

Germany

www.weidmueller.com

Technical data

Dimensions and weights

| | | | |
|--------------------------|------------|----------------|------------|
| Depth | 68 mm | Depth (inches) | 2.677 inch |
| Depth including DIN rail | 69 mm | Height | 74 mm |
| Height (inches) | 2.913 inch | Width | 6.1 mm |
| Width (inches) | 0.24 inch | Net weight | 17.751 g |

Temperatures

| | | | |
|----------------------------------|----------------|----------------------------------|--------|
| Storage temperature | -25 °C...55 °C | Continuous operating temp., min. | -60 °C |
| Continuous operating temp., max. | 130 °C | | |

Material data

| | | | |
|---------------------------|-------|--------|-------|
| Material | Wemid | Colour | black |
| UL 94 flammability rating | V-0 | | |

Rating data IECEx/ATEX

| | | | |
|------------------------|-----------------|---------------------------------|-------------------|
| Certificate No. (ATEX) | TUEV17ATEX8064U | Certificate No. (IECEX) | IECEXTUR17.0030U |
| Current (ATEX) | 6.3 A | Wire cross section max. (ATEX) | 4 mm ² |
| Current (IECEX) | 6.3 A | Wire cross section max. (IECEX) | 4 mm ² |
| Marking EN 60079-7 | Ex ec II C Gc | Ex 2014/34/EU label | II 3 G D |

System specifications

| | | | |
|-------------------------------|-------|-------------------------------------|----|
| End cover plate required | Yes | Number of potentials | 1 |
| Number of levels | 1 | Number of clamping points per level | 2 |
| Number of potentials per tier | 1 | PE connection | No |
| Rail | TS 35 | N-function | No |
| PE function | No | PEN function | No |

Additional technical data

| | | | |
|---------------------|-------|-------------------|---------|
| Installation advice | Rail | Open sides | right |
| Snap-on | No | Type of fixing | Snap-on |
| Type of mounting | TS 35 | With snap-in pegs | No |

CSA rating data

| | | | |
|-------------------------------|-----------------|-------------------------------|--------|
| Certificate No. (CSA) | 200039-70089609 | Current size B (CSA) | 10 A |
| Current size C (CSA) | 10 A | Current size D (CSA) | 10 A |
| Voltage size B (CSA) | 300 V | Voltage size C (CSA) | 150 V |
| Voltage size D (CSA) | 300 V | Wire cross section max. (CSA) | 10 AWG |
| Wire cross section min. (CSA) | 26 AWG | | |

Conductors for clamping (additional connection)

Connection type, additional connection PUSH IN

Conductors for clamping (rated connection)

| | |
|--|----------------------|
| Blade size | 0.6 x 3.5 mm |
| Clamping range, max. | 6 mm ² |
| Clamping range, min. | 0.14 mm ² |
| Connection cross-section, stranded, max. | 6 mm ² |

Creation date July 7, 2024 8:38:52 PM CEST

AFS 4 2C 10-36V BK

Weidmüller Interface GmbH & Co. KG

Klingenbergstraße 26

D-32758 Detmold

Germany

www.weidmueller.com

Technical data

| | | | |
|---|---|-------------|---------|
| Connection cross-section, stranded, min. 0.5 mm² | | | |
| Connection direction | | top | |
| Gauge to IEC 60947-1 | | A4 | |
| Number of connections | | 2 | |
| Stripping length | | 12 mm | |
| Tube length for twin wire-end ferrule | Tube length | max. | 12 mm |
| | | min. | 8 mm |
| | Cross-section for conductor connection | min. | 0.5 mm² |
| | | max. | 1.5 mm² |
| Tube length for wire-end ferrule with plastic collar DIN 46228/4 | Tube length | max. | 12 mm |
| | | min. | 6 mm |
| | Cross-section for conductor connection | min. | 0.5 mm² |
| | | max. | 1 mm² |
| | Tube length | max. | 12 mm |
| | | min. | 8 mm |
| | Cross-section for conductor connection | min. | 1.5 mm² |
| | | max. | 2.5 mm² |
| | Tube length | max. | 12 mm |
| | | min. | 10 mm |
| | Cross-section for conductor connection | nominal | 4 mm² |
| | Tube length for wire-end ferrule without plastic collar DIN 46228/1 | Tube length | max. |
| min. | | | 6 mm |
| Cross-section for conductor connection | | min. | 0.5 mm² |
| | | max. | 1 mm² |
| Tube length | | max. | 12 mm |
| | | min. | 7 mm |
| Cross-section for conductor connection | | min. | 1.5 mm² |
| | | max. | 2.5 mm² |
| Tube length | | max. | 15 mm |
| | | min. | 9 mm |
| Cross-section for conductor connection | | min. | 4 mm² |
| | | max. | 6 mm² |
| Twin wire-end ferrules, max. | | 1.5 mm² | |
| Twin wire-end ferrules, min. | | 0.5 mm² | |
| Type of connection | | PUSH IN | |
| Type of connection 2 | | PUSH IN | |
| Wire connection cross section AWG, max. | | AWG 12 | |
| Wire connection cross section AWG, min. | | AWG 26 | |
| Wire connection cross section, finely stranded, max. | | 6 mm² | |
| Wire connection cross section, finely stranded, min. | | 0.5 mm² | |
| Wire connection cross-section, finely stranded with wire-end ferrules DIN 46228/1, max. | | 6 mm² | |
| Wire connection cross-section, finely stranded with wire-end ferrules DIN 46228/1, min. | | 0.5 mm² | |
| Wire connection cross-section, finely stranded with wire-end ferrules DIN 46228/4, max. | | 4 mm² | |
| Wire connection cross-section, finely stranded with wire-end ferrules DIN 46228/4, min. | | 0.5 mm² | |
| Wire connection cross-section, solid core, max. | | 4 mm² | |

AFS 4 2C 10-36V BK

Weidmüller Interface GmbH & Co. KG

Klingenbergstraße 26

D-32758 Detmold

Germany

www.weidmueller.com

Technical data

Wire connection cross-section, solid core, min. 0.5 mm²

Fuse terminals

| | | | |
|--|-------------------------|--|-------------------------|
| Cartridge fuse | G-Si. 5 x 20 | Display | Red LED |
| Leakage current, max. | 0.5 mA | Operating voltage, max. | 36 V |
| Power loss for overload and short-circuit protection for a composite arrangement | 1.6 W at 6.3 A @ 34 °C | Power loss for overload and short-circuit protection for an individual arrangement | 1,6 W bei 6,3 A @ 31 °C |
| Power loss for short-circuit protection only for a composite arrangement | 2,5 W bei 6,3 A @ 32 °C | Power loss for short-circuit protection only for an individual arrangement | 4,0 W bei 6,3 A @ 41 °C |

General

| | | | |
|---|------------------|---|--------|
| Installation advice | Rail | Rail | TS 35 |
| Standards | DIN EN 60947-7-3 | Wire connection cross section AWG, max. | AWG 12 |
| Wire connection cross section AWG, min. | AWG 26 | | |

Rating data

| | | | |
|-------------------------------------|-------------------|--|--------|
| Rated cross-section | 4 mm ² | Rated voltage | 36 V |
| Rated voltage to adjoining terminal | 500 V | Rated DC voltage | 36 V |
| Rated current | 6.3 A | Current at maximum wires | 6.3 A |
| Standards | DIN EN 60947-7-3 | Volume resistance according to IEC 60947-7-x | 1 mΩ |
| Rated impulse withstand voltage | 4 kV | Power loss in accordance with IEC 60947-7-x | 1.02 W |
| Pollution severity | 3 | Surge voltage category | III |

UL rating data

| | | | |
|--|--------|--|--------|
| Certificate No. (cURus) | E60693 | Conductor size Factory wiring max. (cURus) | 10 AWG |
| Conductor size Factory wiring min. (cURus) | 26 AWG | Conductor size Field wiring max. (cURus) | 10 AWG |
| Conductor size Field wiring min. (cURus) | 26 AWG | Current size B (cURus) | 10 A |
| Current size C (cURus) | 10 A | Current size D (cURus) | 10 A |
| Voltage size B (cURus) | 300 V | Voltage size C (cURus) | 150 V |
| Voltage size D (cURus) | 300 V | | |

Classifications

| | | | |
|-------------|-------------|-------------|-------------|
| ETIM 6.0 | EC000899 | ETIM 7.0 | EC000899 |
| ETIM 8.0 | EC000899 | ETIM 9.0 | EC000899 |
| ECLASS 9.0 | 27-14-11-16 | ECLASS 9.1 | 27-14-11-16 |
| ECLASS 10.0 | 27-14-11-16 | ECLASS 11.0 | 27-14-11-16 |
| ECLASS 12.0 | 27-14-11-16 | ECLASS 13.0 | 27-25-01-13 |

Environmental Product Compliance

REACH SVHC /

Important note

Product information The voltage depends on the selected fuse element or the selected indicator light

AFS 4 2C 10-36V BK

Weidmüller Interface GmbH & Co. KG

Klingenbergstraße 26

D-32758 Detmold

Germany

www.weidmueller.com

Technical data

Approvals

Approvals



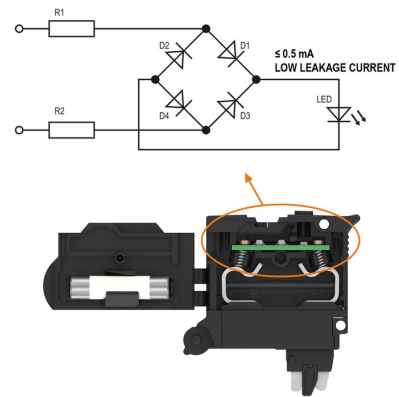
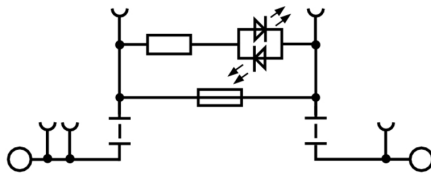
| | |
|---------------------------|------------|
| ROHS | Conform |
| UL File Number Search | UL Website |
| Certificate No. (cURus) | E60693 |
| Certificate No. (cURusEX) | E184763 |

Downloads

| | |
|---|---|
| Approval/Certificate/Document of Conformity | Attestation of Conformity IECEX_TUR_17.0030U.pdf ATEX Certificate DNVGL certificate CCC Ex Certificate CB Testreport CB Certificate 20-AV4BO-0273U CE Declaration of Conformity UKCA declaration of conformity |
| Engineering Data | CAD data – STEP |
| Tender specification | Klippon® Connect 2429870000 DE Klippon® Connect 2429870000 EN |
| User Documentation | NTI_AFS 4 2C BK.pdf StorageConditionsTerminalBlocks User Manual AFS |
| Catalogues | Catalogues in PDF-format |

Weidmüller Interface GmbH & Co. KG
Klingenbergstraße 26
D-32758 Detmold
Germany

Drawings



AFS 4 2C 10-36V BK

Weidmüller Interface GmbH & Co. KG

Klingenbergstraße 26

D-32758 Detmold

Germany

www.weidmueller.com

Accessories

WS 8/6



WS/ DEK

MultiMark terminal markers use an innovative composite material made from two components. The hard base contour of the marker snaps securely into the connector. The elastic surface finish makes the marker easy to mount. This specially punched material enables the strips to be stretched to accommodate the slight variations in spacing that tend to add up, especially with long terminal blocks. Another advantage: the excellent printability of the surface material guarantees durable and wear-resistant labelling. A print resolution of 300 dpi also produces a very legible script.

Your benefits with MultiMark

- Firm hold and durable printing
- Continuous strips save installation time
- Easy mounting thanks to an innovative composite material
- Large label field for optimal legibility
- High flexibility thanks to manufacturer independence

General ordering data

| | | |
|------------|----------------------------|---|
| Type | WS 8/6 MM WS | Version |
| Order No. | 2007160000 | WS, Terminal marker, 8 x 6 mm, Weidmueller, white |
| GTIN (EAN) | 4050118391879 | |
| Qty. | 600 pc(s). | |

A-Series



A partition plate is used for the optical separation of circuits or used for electrical isolation from neighbouring cross-connectors. In contrast to the end plate, the contour can be larger than the adjacent terminal blocks. However, it should not be smaller, as otherwise the required clearance and creepage distances within the application can no longer be maintained.

General ordering data

| | | |
|------------|----------------------------|---------------------------|
| Type | APP 2 | Version |
| Order No. | 2489090000 | A-series, Partition plate |
| GTIN (EAN) | 4050118499308 | |
| Qty. | 50 pc(s). | |

AFS 4 2C 10-36V BK

Weidmüller Interface GmbH & Co. KG

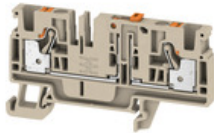
Klingenbergstraße 26

D-32758 Detmold

Germany

www.weidmueller.com

Accessories

4 mm²

In some applications it makes sense to add a test point or a disconnect element to the feed through terminal for testing and safety purposes. With test disconnect terminals you measure electric circuits in the absence of voltage. While the disconnecting points clearance and creepage distance is not assessed in dimensional terms, the specified rated impulse voltage strength must be proven.

General ordering data

| | | |
|------------|----------------------------|--|
| Type | ADT 4 2C BL | Version |
| Order No. | 2429880000 | Test-disconnect terminal, PUSH IN, 4 mm ² , 500 V, 20 A, blue |
| GTIN (EAN) | 4050118439670 | |
| Qty. | 50 pc(s). | |
| Type | ADT 4 2C OR | Version |
| Order No. | 2429890000 | Test-disconnect terminal, PUSH IN, 4 mm ² , 500 V, 20 A, orange |
| GTIN (EAN) | 4050118439687 | |
| Qty. | 50 pc(s). | |
| Type | ADT 4 2C | Version |
| Order No. | 2429850000 | Test-disconnect terminal, PUSH IN, 4 mm ² , 500 V, 20 A, dark beige |
| GTIN (EAN) | 4050118439724 | |
| Qty. | 50 pc(s). | |

Blank



WS markers are the perfect match for the W-series connectors. Thanks to their system compatibility, the WS tags can also be used with the I-series and the Z-series. The large marking surfaces do not only permit long character strings but also multi-line text. WS markers are ideal for labels with long, customised character strings. Thanks to the proven MultiCard format, printing with PrintJet CONNECT oder/or Plotter is possible.

- Can be fitted in strips or individually
- Markers in proven MultiCard format

For custom printing: Please send us a file of our labeling software M-Print PRO or M-Print PRO Online (without installation) for your labeling specifications.

General ordering data

| | | |
|------------|----------------------------|--|
| Type | WS 10/6 M PLUS MC NE WS | Version |
| Order No. | 2003780000 | WS, Terminal marker, 10 x 6 mm, Pitch in mm (P): 6.00 Weidmueller, |
| GTIN (EAN) | 4050118424461 | Allen-Bradley, white |
| Qty. | 600 pc(s). | |

AFS 4 2C 10-36V BK

Weidmüller Interface GmbH & Co. KG

Klingenbergstraße 26

D-32758 Detmold

Germany

www.weidmueller.com

Accessories

Coding elements



The pluggable connections for power electronics - optimised for modern drive technologies, e.g. motor starters, frequency converters and servo-controllers.

OMNIMATE Power sets the new standard – with increased safety and innovative solutions such as the pluggable shield, integrated signal contacts and one-handed operation.

The three product lines offer you further advantages:

- Application-oriented scalability: from the compact 4 mm² connector for 29 A (IEC) or 20 A (UL) up to the sturdy 16 mm² connector for 76 A (IEC) or 54 A (UL)
- Unlimited usage up to 1,000 V (IEC) or 600 V (UL)
- A variety of application optimised mounting options

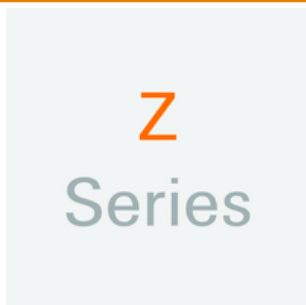
Our Service:

Design your individual connectors simply by using the

General ordering data

| Type | VDS180 SV7.62 | Version | Product data | Packaging |
|------------|----------------------------|---|--------------|-----------|
| Order No. | 1853940000 | PCB plug-in connector, Accessories, black, Number of poles: 1 | | Box |
| GTIN (EAN) | 4032248389513 | | | |
| Qty. | 50 pc(s). | | | |

Z-Series



Weidmüller's range of products includes end brackets that guarantee a permanent, reliable mounting on the terminal rail and prevent sliding. Versions with and without screws are available. The end brackets include marking options, also for group markers, and also a test plug holder.

General ordering data

| Type | ZST 1 | Version |
|------------|----------------------------|---------------------------------|
| Order No. | 1269070000 | Accessories, Accessories holder |
| GTIN (EAN) | 4050118094091 | |
| Qty. | 25 pc(s). | |

AFS 4 2C 10-36V BK

Weidmüller Interface GmbH & Co. KG

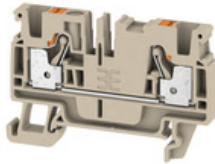
Klingenbergstraße 26

D-32758 Detmold

Germany

www.weidmueller.com

Accessories

4 mm²

To feed through power, signal, and data is the classical requirement in electrical engineering and panel building. The insulating material, the connection system and the design of the terminal blocks are the differentiating features. A feed-through terminal block is suitable for joining and/or connecting one or more conductors. They could have one or more connection levels that are on the same potential or insulated against one another.

General ordering data

| | | |
|------------|----------------------------|---|
| Type | A3C 4 | Version |
| Order No. | 2051240000 | Feed-through terminal, PUSH IN, 4 mm ² , 800 V, 32 A, dark beige |
| GTIN (EAN) | 4050118411546 | |
| Qty. | 50 pc(s). | |
| Type | A3C 4 BL | Version |
| Order No. | 2051280000 | Feed-through terminal, PUSH IN, 4 mm ² , 800 V, 32 A, blue |
| GTIN (EAN) | 4050118411614 | |
| Qty. | 50 pc(s). | |
| Type | A3C 4 LTGY | Version |
| Order No. | 2051460000 | Feed-through terminal, PUSH IN, 4 mm ² , 800 V, 32 A, Light Grey |
| GTIN (EAN) | 4050118411553 | |
| Qty. | 50 pc(s). | |
| Type | A3C 4 BK | Version |
| Order No. | 2051400000 | Feed-through terminal, PUSH IN, 4 mm ² , 800 V, 32 A, black |
| GTIN (EAN) | 4050118411560 | |
| Qty. | 50 pc(s). | |
| Type | A3C 4 DBL | Version |
| Order No. | 2534360000 | Feed-through terminal, PUSH IN, 4 mm ² , 800 V, 32 A, Dark Blue |
| GTIN (EAN) | 4050118546057 | |
| Qty. | 50 pc(s). | |
| Type | A3C 4 RD | Version |
| Order No. | 2051300000 | Feed-through terminal, PUSH IN, 4 mm ² , 800 V, 32 A, red |
| GTIN (EAN) | 4050118411591 | |
| Qty. | 50 pc(s). | |
| Type | A3C 4 BR | Version |
| Order No. | 2534290000 | Feed-through terminal, PUSH IN, 4 mm ² , 800 V, 32 A, brown |
| GTIN (EAN) | 4050118546040 | |
| Qty. | 50 pc(s). | |
| Type | A3C 4 GN | Version |
| Order No. | 2051350000 | Feed-through terminal, PUSH IN, 4 mm ² , 800 V, 32 A, green |
| GTIN (EAN) | 4050118411584 | |
| Qty. | 50 pc(s). | |
| Type | A3C 4 WT | Version |
| Order No. | 2051370000 | Feed-through terminal, PUSH IN, 4 mm ² , 800 V, 32 A, white |
| GTIN (EAN) | 4050118411812 | |
| Qty. | 50 pc(s). | |
| Type | A3C 4 OR | Version |
| Order No. | 2051320000 | Feed-through terminal, PUSH IN, 4 mm ² , 800 V, 32 A, orange |
| GTIN (EAN) | 4050118411386 | |
| Qty. | 50 pc(s). | |

AFS 4 2C 10-36V BK

Weidmüller Interface GmbH & Co. KG

Klingenbergstraße 26

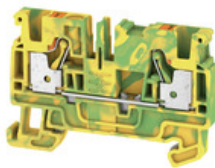
D-32758 Detmold

Germany

www.weidmueller.com

Accessories

| | | |
|------------|----------------------------|---|
| Type | A3C 4 YL | Version |
| Order No. | 2051340000 | Feed-through terminal, PUSH IN, 4 mm ² , 800 V, 32 A, yellow |
| GTIN (EAN) | 4050118411669 | |
| Qty. | 50 pc(s). | |

4 mm²

A protective feed through terminal block is an electrical conductor for the purpose of safety and is used in many applications. To establish the electrical and mechanical connection between copper conductors and the mounting support plate, PE terminal blocks are used. They have one or more contact points for connection with and/or bifurcation of protective earth conductors.

General ordering data

| | | |
|------------|----------------------------|--|
| Type | A3C 4 PE | Version |
| Order No. | 2051410000 | PE terminal, PUSH IN, 4 mm ² , Green/yellow |
| GTIN (EAN) | 4050118411713 | |
| Qty. | 50 pc(s). | |

Marker holder



The marker holder offer the possibility of additional mounting of standard markers with a pitch of 5 or 5.1 mm. The angled holders can be optionally snapped together and could be mounted in all standard marking channels of the Klippon® Connect modular terminal blocks. Fitting marker types could be found under the respective accessories of the designation marking holder.

General ordering data

| | | |
|------------|----------------------------|----------------------------|
| Type | BZT 1 ZA WS 10/5 | Version |
| Order No. | 1805520000 | Accessories, Marker holder |
| GTIN (EAN) | 4032248270248 | |
| Qty. | 100 pc(s). | |
| Type | BZT 1 WS 10/5 | Version |
| Order No. | 1805490000 | Accessories, Marker holder |
| GTIN (EAN) | 4032248270231 | |
| Qty. | 100 pc(s). | |

AFS 4 2C 10-36V BK

Weidmüller Interface GmbH & Co. KG

Klingenbergstraße 26

D-32758 Detmold

Germany

www.weidmueller.com

Accessories

4 mm²


End plates are fitted to the open side of the last modular terminal before the end bracket. The use of an end plate ensures the function of the modular terminal and the specified rated voltage. It guarantees protection against contact with live parts and makes the final terminal finger-proof.

General ordering data

| | | |
|------------|----------------------------|---------------------|
| Type | AEP 3C 4 OR | Version |
| Order No. | 2051890000 | A-series, End plate |
| GTIN (EAN) | 4050118411799 | |
| Qty. | 20 pc(s). | |
| Type | AEP 3C 4 BL | Version |
| Order No. | 2051880000 | A-series, End plate |
| GTIN (EAN) | 4050118411836 | |
| Qty. | 20 pc(s). | |
| Type | AEP 3C 4 | Version |
| Order No. | 2051720000 | A-series, End plate |
| GTIN (EAN) | 4050118411829 | |
| Qty. | 20 pc(s). | |
| Type | AEP 3C 4 BK | Version |
| Order No. | 2486640000 | A-series, End plate |
| GTIN (EAN) | 4050118497458 | |
| Qty. | 20 pc(s). | |

Additional accessories

**No task is too small when creating the perfect solution.**

Connections form just one part of the overall process. Small details are often the key to the perfect solution in applications where potentials are tested, grouped or even isolated.

A system is not a system without small but essential details:

- Test plugs ensure reliable pick-up from diagnostic sockets

In tandem with the manufacturing process and application.

General ordering data

| | | | | |
|------------|----------------------------|--|--------------|-----------|
| Type | PS 2.0 MC | Version | Product data | Packaging |
| Order No. | 0310000000 | PCB plug-in connector, Accessories, Test plug, red, Number of poles: 1 | | Box |
| GTIN (EAN) | 4008190000059 | | | |
| Qty. | 20 pc(s). | | | |

AFS 4 2C 10-36V BK**Weidmüller Interface GmbH & Co. KG**

Klingenbergstraße 26

D-32758 Detmold

Germany

www.weidmueller.com**Accessories****A-Series**A
Series

Weidmüller's range of products includes end brackets that guarantee a permanent, reliable mounting on the terminal rail and prevent sliding. Versions with and without screws are available. The end brackets include marking options, also for group markers, and also a test plug holder.

General ordering data

| | | |
|------------|----------------------------|-----------------------|
| Type | AEB 35 SCL/1 V0 GY | Version |
| Order No. | 2661290000 | A-series, End bracket |
| GTIN (EAN) | 4050118702170 | |
| Qty. | 20 pc(s). | |
| Type | AEB 35 SCL/1 V0 | Version |
| Order No. | 2661280000 | A-series, End bracket |
| GTIN (EAN) | 4050118702163 | |
| Qty. | 20 pc(s). | |
| Type | AEB 35 SCL/1 V0 BK | Version |
| Order No. | 2661300000 | A-series, End bracket |
| GTIN (EAN) | 4050118702187 | |
| Qty. | 20 pc(s). | |
| Type | AEB 35 SC/1 | Version |
| Order No. | 1991920000 | A-series, End bracket |
| GTIN (EAN) | 4050118376722 | |
| Qty. | 50 pc(s). | |
| Type | AEB 35 SC/1 BK | Version |
| Order No. | 2475310000 | A-series, End bracket |
| GTIN (EAN) | 4050118487114 | |
| Qty. | 50 pc(s). | |

AFS 4 2C 10-36V BK

Weidmüller Interface GmbH & Co. KG

Klingenbergstraße 26

D-32758 Detmold

Germany

www.weidmueller.com

Accessories

Plus



The Dekafix (DEK) marker is the universal marker for all conductor and plug-in connectors as well as for electronic sub-assemblies. The system is ideal for short number sequences and covers a wide range of ready-printed markers.

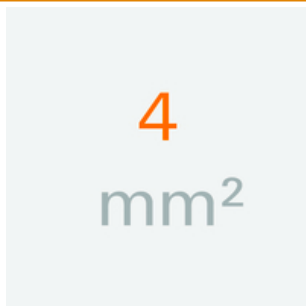
Strips for fast installation in only one work step. The printing is easy to read, rich in contrast and available in various widths.

- Large range of ready-to-use markers
- Strips for fast installation
- Terminal markers, suitable for all Weidmüller cable connectors
- Available as blank MultiCard or with standard printing

For custom printing: Please send us a file of our labeling software M-Print PRO or M-Print PRO Online (without installation) for your labeling specifications.

General ordering data

| Type | DEK 5/6 PLUS MC NE WS | Version |
|------------|----------------------------|---|
| Order No. | 1011320000 | Dekafix, Terminal marker, 5 x 6 mm, Pitch in mm (P): 6.00 |
| GTIN (EAN) | 4032248717644 | Weidmueller, white |
| Qty. | 1,000 pc(s). | |

4 mm²

The plug-in cross-connections feature easy handling and quick installation. This saves a great deal of time during installation in comparison with screwed solutions.

General ordering data

| Type | ZQV 4N/10 | Version |
|------------|----------------------------|---|
| Order No. | 1528090000 | Cross-connector (terminal), Plugged, Number of poles: 10, Pitch in mm |
| GTIN (EAN) | 4050118332896 | (P): 6.10, Insulated: Yes, 32 A, orange |
| Qty. | 20 pc(s). | |
| Type | ZQV 4N/2 RD | Version |
| Order No. | 2460450000 | Cross-connector (terminal), Plugged, Number of poles: 2, Pitch in mm |
| GTIN (EAN) | 4050118476149 | (P): 6.10, 32 A, red |
| Qty. | 60 pc(s). | |
| Type | ZQV 4N/6 RD | Version |
| Order No. | 2460780000 | Cross-connector (terminal), Plugged, Number of poles: 6, Pitch in mm |
| GTIN (EAN) | 4050118476200 | (P): 6.10, Insulated: Yes, 32 A, red |
| Qty. | 20 pc(s). | |

AFS 4 2C 10-36V BK

Weidmüller Interface GmbH & Co. KG

Klingenbergstraße 26

D-32758 Detmold

Germany

www.weidmueller.com

Accessories

| | | |
|------------|----------------------------|---|
| Type | ZQV 4N/3 BL | Version |
| Order No. | 1528080000 | Cross-connector (terminal), Plugged, Number of poles: 3, Pitch in mm |
| GTIN (EAN) | 4050118333008 | (P): 6.10, Insulated: Yes, 32 A, blue |
| Qty. | 60 pc(s). | |
| Type | ZQV 4N/50 RD | Version |
| Order No. | 2460730000 | Cross-connector (terminal), Plugged, Number of poles: 50, Pitch in mm |
| GTIN (EAN) | 4050118476156 | (P): 6.10, Insulated: Yes, 32 A, red |
| Qty. | 5 pc(s). | |
| Type | ZQV 4N/7 BL | Version |
| Order No. | 1528180000 | Cross-connector (terminal), Plugged, Number of poles: 7, Pitch in mm |
| GTIN (EAN) | 4050118333114 | (P): 6.10, Insulated: Yes, 32 A, blue |
| Qty. | 20 pc(s). | |
| Type | ZQV 4N/6 BL | Version |
| Order No. | 1528170000 | Cross-connector (terminal), Plugged, Number of poles: 6, Pitch in mm |
| GTIN (EAN) | 4050118332926 | (P): 6.10, Insulated: Yes, 32 A, blue |
| Qty. | 20 pc(s). | |
| Type | ZQV 4N/9 RD | Version |
| Order No. | 2460750000 | Cross-connector (terminal), Plugged, Number of poles: 9, Pitch in mm |
| GTIN (EAN) | 4050118476170 | (P): 6.10, Insulated: Yes, 32 A, red |
| Qty. | 20 pc(s). | |
| Type | ZQV 4N/5 RD | Version |
| Order No. | 2460790000 | Cross-connector (terminal), Plugged, Number of poles: 5, Pitch in mm |
| GTIN (EAN) | 4050118476217 | (P): 6.10, Insulated: Yes, 32 A, red |
| Qty. | 60 pc(s). | |
| Type | ZQV 4N/5 BL | Version |
| Order No. | 1528140000 | Cross-connector (terminal), Plugged, Number of poles: 5, Pitch in mm |
| GTIN (EAN) | 4050118333015 | (P): 6.10, Insulated: Yes, 32 A, blue |
| Qty. | 60 pc(s). | |
| Type | ZQV 4N/6 | Version |
| Order No. | 1527990000 | Cross-connector (terminal), Plugged, Number of poles: 6, Pitch in mm |
| GTIN (EAN) | 4050118332919 | (P): 6.10, Insulated: Yes, 32 A, orange |
| Qty. | 20 pc(s). | |
| Type | ZQV 4N/8 | Version |
| Order No. | 1528030000 | Cross-connector (terminal), Plugged, Number of poles: 8, Pitch in mm |
| GTIN (EAN) | 4050118332841 | (P): 6.10, Insulated: Yes, 32 A, orange |
| Qty. | 20 pc(s). | |
| Type | ZQV 4N/2 BL | Version |
| Order No. | 1528040000 | Cross-connector (terminal), Plugged, Number of poles: 2, Pitch in mm |
| GTIN (EAN) | 4050118332773 | (P): 6.10, Insulated: Yes, 32 A, blue |
| Qty. | 60 pc(s). | |
| Type | ZQV 4N/50 BL | Version |
| Order No. | 1528240000 | Cross-connector (terminal), Plugged, Number of poles: 50, Pitch in mm |
| GTIN (EAN) | 4050118333121 | (P): 6.10, Insulated: Yes, 32 A, blue |
| Qty. | 5 pc(s). | |
| Type | ZQV 4N/3 | Version |
| Order No. | 1527940000 | Cross-connector (terminal), Plugged, Number of poles: 3, Pitch in mm |
| GTIN (EAN) | 4050118332865 | (P): 6.10, Insulated: Yes, 32 A, orange |
| Qty. | 60 pc(s). | |
| Type | ZQV 4N/9 | Version |
| Order No. | 1528070000 | Cross-connector (terminal), Plugged, Number of poles: 9, Pitch in mm |
| GTIN (EAN) | 4050118332797 | (P): 6.10, Insulated: Yes, 32 A, orange |
| Qty. | 20 pc(s). | |

Creation date July 7, 2024 8:38:52 PM CEST

Catalogue status 29.06.2024 / We reserve the right to make technical changes.

15

AFS 4 2C 10-36V BK

Weidmüller Interface GmbH & Co. KG

Klingenbergstraße 26

D-32758 Detmold

Germany

www.weidmueller.com

Accessories

| | | |
|------------|----------------------------|---|
| Type | ZQV 4N/3 RD | Version |
| Order No. | 2460810000 | Cross-connector (terminal), Plugged, Number of poles: 3, Pitch in mm |
| GTIN (EAN) | 4050118476231 | (P): 6.10, 32 A, red |
| Qty. | 60 pc(s). | |
| Type | ZQV 4N/4 BL | Version |
| Order No. | 1528120000 | Cross-connector (terminal), Plugged, Number of poles: 4, Pitch in mm |
| GTIN (EAN) | 4050118332872 | (P): 6.10, Insulated: Yes, 32 A, blue |
| Qty. | 60 pc(s). | |
| Type | ZQV 4N/8 RD | Version |
| Order No. | 2460760000 | Cross-connector (terminal), Plugged, Number of poles: 8, Pitch in mm |
| GTIN (EAN) | 4050118476187 | (P): 6.10, Insulated: Yes, 32 A, red |
| Qty. | 20 pc(s). | |
| Type | ZQV 4N/7 RD | Version |
| Order No. | 2460770000 | Cross-connector (terminal), Plugged, Number of poles: 7, Pitch in mm |
| GTIN (EAN) | 4050118476194 | (P): 6.10, Insulated: Yes, 32 A, red |
| Qty. | 20 pc(s). | |
| Type | ZQV 4N/10 RD | Version |
| Order No. | 2460740000 | Cross-connector (terminal), Plugged, Number of poles: 10, Pitch in mm |
| GTIN (EAN) | 4050118476163 | (P): 6.10, 32 A, red |
| Qty. | 20 pc(s). | |
| Type | ZQV 4N/50 | Version |
| Order No. | 1528130000 | Cross-connector (terminal), Plugged, Number of poles: 50, Pitch in mm |
| GTIN (EAN) | 4050118332902 | (P): 6.10, Insulated: Yes, 32 A, orange |
| Qty. | 5 pc(s). | |
| Type | ZQV 4N/9 BL | Version |
| Order No. | 1528220000 | Cross-connector (terminal), Plugged, Number of poles: 9, Pitch in mm |
| GTIN (EAN) | 4050118333107 | (P): 6.10, Insulated: Yes, 32 A, blue |
| Qty. | 20 pc(s). | |
| Type | ZQV 4N/10 BL | Version |
| Order No. | 1528230000 | Cross-connector (terminal), Plugged, Number of poles: 10, Pitch in mm |
| GTIN (EAN) | 4050118333138 | (P): 6.10, Insulated: Yes, 32 A, blue |
| Qty. | 20 pc(s). | |
| Type | ZQV 4N/7 | Version |
| Order No. | 1528020000 | Cross-connector (terminal), Plugged, Number of poles: 7, Pitch in mm |
| GTIN (EAN) | 4050118332780 | (P): 6.10, Insulated: Yes, 32 A, orange |
| Qty. | 20 pc(s). | |
| Type | ZQV 4N/2 | Version |
| Order No. | 1527930000 | Cross-connector (terminal), Plugged, Number of poles: 2, Pitch in mm |
| GTIN (EAN) | 4050118332766 | (P): 6.10, Insulated: Yes, 32 A, orange |
| Qty. | 60 pc(s). | |
| Type | ZQV 4N/5 | Version |
| Order No. | 1527980000 | Cross-connector (terminal), Plugged, Number of poles: 5, Pitch in mm |
| GTIN (EAN) | 4050118332759 | (P): 6.10, Insulated: Yes, 32 A, orange |
| Qty. | 60 pc(s). | |
| Type | ZQV 4N/8 BL | Version |
| Order No. | 1528190000 | Cross-connector (terminal), Plugged, Number of poles: 8, Pitch in mm |
| GTIN (EAN) | 4050118332858 | (P): 6.10, Insulated: Yes, 32 A, blue |
| Qty. | 20 pc(s). | |
| Type | ZQV 4N/4 | Version |
| Order No. | 1527970000 | Cross-connector (terminal), Plugged, Number of poles: 4, Pitch in mm |
| GTIN (EAN) | 4050118332889 | (P): 6.10, Insulated: Yes, 32 A, orange |
| Qty. | 60 pc(s). | |

Creation date July 7, 2024 8:38:52 PM CEST

AFS 4 2C 10-36V BK

Weidmüller Interface GmbH & Co. KG

Klingenbergstraße 26

D-32758 Detmold

Germany

www.weidmueller.com

Accessories

| | | |
|------------|----------------------------|--|
| Type | ZQV 4N/4 RD | Version |
| Order No. | 2460800000 | Cross-connector (terminal), Plugged, Number of poles: 4, Pitch in mm |
| GTIN (EAN) | 4050118476224 | (P): 6.10, Insulated: Yes, 32 A, red |
| Qty. | 60 pc(s). | |

DEK 5/6



WS/ DEK

MultiMark terminal markers use an innovative composite material made from two components. The hard base contour of the marker snaps securely into the connector. The elastic surface finish makes the marker easy to mount. This specially punched material enables the strips to be stretched to accommodate the slight variations in spacing that tend to add up, especially with long terminal blocks. Another advantage: the excellent printability of the surface material guarantees durable and wear-resistant labelling. A print resolution of 300 dpi also produces a very legible script.

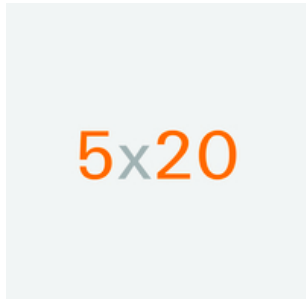
Your benefits with MultiMark

- Firm hold and durable printing
- Continuous strips save installation time
- Easy mounting thanks to an innovative composite material
- Large label field for optimal legibility
- High flexibility thanks to manufacturer independence

General ordering data

| | | |
|------------|----------------------------|--|
| Type | DEK 5/6 MM WS | Version |
| Order No. | 2007120000 | Dekafix, Terminal marker, 5 x 6 mm, Weidmueller, white |
| GTIN (EAN) | 4050118392104 | |
| Qty. | 600 pc(s). | |

5x20



For protection against overcurrent, we offer cartridge fuse with dimensions 5x20 mm in sizes from 100 mA to 6.3 A.

General ordering data

| | | |
|------------|----------------------------|---|
| Type | G 20/0.50A/F | Version |
| Order No. | 0430600000 | Miniature fuse, quick-acting, 0.5 A, G-Si. 5 x 20 |
| GTIN (EAN) | 4008190046835 | |
| Qty. | 10 pc(s). | |

AFS 4 2C 10-36V BK

Weidmüller Interface GmbH & Co. KG

Klingenbergstraße 26

D-32758 Detmold

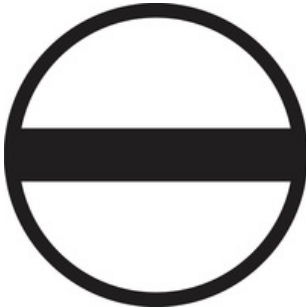
Germany

www.weidmueller.com

Accessories

| | | |
|------------|----------------------------|--|
| Type | G 20/1.00A/F | Version |
| Order No. | 0430700000 | Miniature fuse, quick-acting, 1 A, G-Si. 5 x 20 |
| GTIN (EAN) | 4008190093877 | |
| Qty. | 10 pc(s). | |
| Type | G 20/2.00A/F | Version |
| Order No. | 0430900000 | Miniature fuse, quick-acting, 2 A, G-Si. 5 x 20 |
| GTIN (EAN) | 4008190123567 | |
| Qty. | 10 pc(s). | |
| Type | G 20/0.25A/F | Version |
| Order No. | 0430500000 | Miniature fuse, quick-acting, 0.25 A, G-Si. 5 x 20 |
| GTIN (EAN) | 4008190153991 | |
| Qty. | 10 pc(s). | |

Slotted screwdriver



VDE insulated screwdriver sets, for working on live parts up to 1000 V AC and 1500 V DC, DIN EN 60900. IEC 900. Each piece is "GS" safety tested. Blade made from fully hardened, high-alloy chromium-vanadium-molybdenum steel, gun-metal finish.

General ordering data

| | | |
|------------|----------------------------|---|
| Type | SDIS SLIM 0.6X3.5X100 | Version |
| Order No. | 2749610000 | Mounting tool, Blade width (B): 3.5 mm, Blade length: 100 mm, Blade |
| GTIN (EAN) | 4050118896350 | thickness (A): 0.6 mm |
| Qty. | 1 pc(s). | |

A-Series



Warning covers with a flash symbol provide more safety for man and machine. They are used where external voltage must be indicated within the application.

General ordering data

| | | |
|------------|----------------------------|--|
| Type | AAM 4 YE FLASH | Version |
| Order No. | 2635560000 | Terminal marker, 10 x 6.1 mm, Pitch in mm (P): 6.00 yellow |
| GTIN (EAN) | 4050118674507 | |
| Qty. | 40 pc(s). | |

AFS 4 2C 10-36V BK**Weidmüller Interface GmbH & Co. KG**

Klingenbergstraße 26

D-32758 Detmold

Germany

www.weidmueller.com**Accessories****Digital current clamp devices**

Digital current clamp devices and attachments and adapters are used for measuring AC and DC currents. The significant advantage of these devices is that you can make a measurement without breaking the flow of current.

General ordering data

| | | |
|------------|----------------------------|------------|
| Type | ZUB MULTIMETER | Version |
| Order No. | 9205270000 | Multimeter |
| GTIN (EAN) | 4032248723522 | |
| Qty. | 1 pc(s). | |