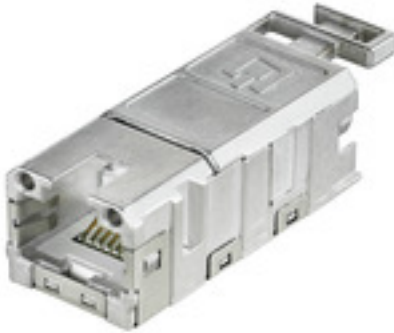


**IE-BI-RJ45-FJ-B****Weidmüller Interface GmbH & Co. KG**

Klingenbergstraße 26

D-32758 Detmold

Germany

[www.weidmueller.com](http://www.weidmueller.com)

FrontCom® Vario integrates multiple functions in only one single frame. The system is easy to install and you can select from a wide range of data, signal and power modules. In addition to being extremely compact, FrontCom® Vario offers a number of unique product features that will make your project planning and work activities secure, fast and future-proof. Furthermore, the FrontCom® Vario system has an attractive housing design that, by the way, offers highest impact-resistance and fully meets the requirements of IP 65 protection class.

**General ordering data**

Version	RJ45 insert socket, Connector for base, TIA-568B
Order No.	<a href="#">1963840000</a>
Type	IE-BI-RJ45-FJ-B
GTIN (EAN)	4032248651894
Qty.	10 pc(s).

## IE-BI-RJ45-FJ-B

Weidmüller Interface GmbH &amp; Co. KG

Klingenbergstraße 26

D-32758 Detmold

Germany

www.weidmueller.com

## Technical data

## Dimensions and weights

Net weight	2.5 g
------------	-------

## Temperatures

Operating temperature	-40 °C...70 °C	Humidity	0...93 % rel. humidity
-----------------------	----------------	----------	------------------------

## General data

Insert type	Insert data SteadyTec	Product type	RJ45 insert socket
Protection degree	IP67 with housing		

## General data

Connection 1	RJ45	Connection 2	IDC
Description of article	Connector for base	Wiring	TIA-568B
Colour	Miscellaneous	Shock resistance acc. to IEC 60512-6-3	250 ms <sup>-2</sup>
Vibration resistance acc. to IEC 60512-6-4	50 ms <sup>-2</sup> sinusoidal (9...500 Hz)	Humidity	0...93 % rel. humidity
Housing main material	Zinc diecast	Insulation cross-section, min.	0.85 mm
Insulation cross-section, max.	1.6 mm	Category	Cat.6A / Class E <sub>A</sub> (ISO/IEC 11801 2010)
Contact material	Spring steel, Ni 1.2 µm	Contact surface	Gold over Nickel, Au ≥ 0.8 µm
Connection diameter, solid	0.4...0.64 mm	Conductor connection cross-section, solid (AWG)	AWG 24...AWG 22
Connection diameter, flexible	0.48...0.76 mm	Conductor connection cross-section, flexible (AWG)	AWG 26...AWG 22
Shielding	360° all-round enclosure, FS 2.8 Ground connection for equipotential bonding	Protection degree	IP67 with housing
Plugging cycles	750	Ability to reconnect	≥ 10 cycles for AWG 23-26, ≥ 4 cycles for AWG 22

## Electrical properties

Contact resistance	≤ 20 mΩ	Current-carrying capacity at 50 °C	1 A
Dielectric strength, contact / contact	≥ 1000 V AC/DC	Dielectric strength, contact / shield	≥ 1500 V AC/DC
Insulation strength	500 MΩ	PoE / PoE+	conforming to IEEE 802.3bt

## General standards

Application-specific communication cable facilities	PROFINET installation instructions	Certificate No. (DNV)	TAA000022B
Certificate no. (cULus)	E316369	Connector standard	IEC 60603-7-51
IP protection classes	IEC 60529	UL standard for communication accessories	UL 1863

## IE-BI-RJ45-FJ-B

Weidmüller Interface GmbH &amp; Co. KG

Klingenbergstraße 26

D-32758 Detmold

Germany

www.weidmueller.com

## Technical data

## Classifications

ETIM 6.0	EC001121	ETIM 7.0	EC001121
ETIM 8.0	EC001121	ETIM 9.0	EC001121
ECLASS 9.0	27-44-03-90	ECLASS 9.1	27-44-03-90
ECLASS 10.0	27-44-03-90	ECLASS 11.0	27-44-03-90
ECLASS 12.0	27-44-03-90	ECLASS 13.0	27-44-03-90
ECLASS 14.0	27-44-03-90		

## Environmental Product Compliance

RoHS Compliance Status	Compliant without exemption
REACH SVHC	No SVHC above 0.1 wt%

## Important note

Product information	RJ45 inserts for plug-in connectors ver.1 / 4 / 5 / 14, HDC and junction boxes IE-OM...; IE-OP...; IE-CC...
---------------------	---

## Approvals

Approvals



ROHS	Conform
UL File Number Search	UL Website
Certificate no. (cULus)	E316369

## Downloads

Approval/Certificate/Document of Conformity	<a href="#">GOST Approval</a> <a href="#">GL FrontCom</a> <a href="#">ISO/IEC EN and TIA/EIA Screened Class EA Category 6A, 4 connector channel</a> <a href="#">ISO/IEC EN and TIA/EIA Screened Class E Category 6, 3 connector permanent link</a> <a href="#">ISO/IEC EN and TIA/EIA Screened Class E Category 6, 4 connector channel</a> <a href="#">ISO/IEC EN and TIA/EIA Screened Class EA Category 6A, 2 connector channel</a> <a href="#">CC-Link IE-BI-RJ45-FJ</a> <a href="#">UL Approval</a> <a href="#">Compliance Statement Screened Category 6 ISO/IEC EN and TIA/EIA Connecting Hardware</a>
Engineering Data	<a href="#">CAD data – STEP</a>
User Documentation	<a href="#">MAN IE GUIDE DE</a> <a href="#">MAN IE GUIDE EN</a> <a href="#">Designation key / Type key</a> <a href="#">Manual</a>
Catalogues	<a href="#">Catalogues in PDF-format</a>
Brochures	<a href="#">MB FREECONTACT EN</a> <a href="#">FL FIELDWIRING EN</a> <a href="#">PI PROFINET CABLING EN</a> <a href="#">FL FIELDWIRING EN</a> <a href="#">PI PROFINET CABLING EN</a>

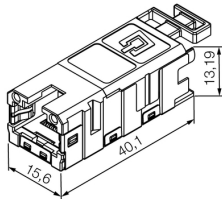
## IE-BI-RJ45-FJ-B

**Weidmüller Interface GmbH & Co. KG**  
Klingenbergstraße 26  
D-32758 Detmold  
Germany

[www.weidmueller.com](http://www.weidmueller.com)

## Drawings

### Dimensioned drawing



### Printing



**IE-BI-RJ45-FJ-B****Weidmüller Interface GmbH & Co. KG**

Klingenbergstraße 26

D-32758 Detmold

Germany

[www.weidmueller.com](http://www.weidmueller.com)**Accessories****Pressing tool**

When working with live voltages, you must follow special guidelines and use special tools - tools which have been specially produced and tested for this purpose.

Weidmüller offers a complete line of pliers which comply with national and international testing standards.

All pliers are produced and tested according to DIN EN 60900.

The pliers are ergonomically designed to fit to the hand form, and thus feature an improved hand position. The fingers are not pressed together - this results in less fatigue during operation.

**General ordering data**

Type	PWZ RJ45	Version
Order No.	<a href="#">1118040000</a>	Pressing tools
GTIN (EAN)	4032248899197	
Qty.	1 pc(s).	

**Cable-lug sleeves****Insulated tab-connector sleeves made from PVC with copper sleeve**

- Commercially available designs
- Not soldered
- With conical entry funnel

**General ordering data**

Type	LIF 1,5F288 R	Version
Order No.	<a href="#">9200520000</a>	cable lug, terminal end, Insulated cable connector, 1.5 mm <sup>2</sup> , 0.5 mm <sup>2</sup> -
GTIN (EAN)	4032248410361	1.5 mm <sup>2</sup> , red
Qty.	100 pc(s).	