

**PTSI 4/LD 400V AC****Weidmüller Interface GmbH & Co. KG**

Klingenbergstraße 26

D-32758 Detmold

Germany

[www.weidmueller.com](http://www.weidmueller.com)

Power distribution using uncut cables with cross-sections from 1.5 to 6 mm<sup>2</sup>.

Power supply / T-branch tap via PUSH IN connection (0.5 to 10 mm<sup>2</sup>) and/or plug-in connection (0.5 to 4 mm<sup>2</sup>).

Coloured markings provide clear assignment of wires.

- Power supply
- Power distribution
- Power branching

**General ordering data**

Version	Field Power® plug-in connector, Fuse, IP20, Polyamide, PUSH IN, Number of poles : 5
Order No.	<a href="#">1961770000</a>
Type	PTSI 4/LD 400V AC
GTIN (EAN)	4032248641765
Qty.	1 pc(s).

## PTSI 4/LD 400V AC

Weidmüller Interface GmbH &amp; Co. KG

Klingenbergstraße 26

D-32758 Detmold

Germany

www.weidmueller.com

## Technical data

## Dimensions and weights

Depth	55 mm	Depth (inches)	2.165 inch
Height	85 mm	Height (inches)	3.346 inch
Width	57 mm	Width (inches)	2.244 inch
Net weight	100 g		

## Temperatures

Storage temperature	-40 °C...85 °C	Operating temperature	-40 °C...55 °C
---------------------	----------------	-----------------------	----------------

## Clamping capacity, PUSH IN connection

Blade size, PUSH IN connection	3.0 x 0.5 mm	Clamping range, max. PUSH IN connection	4 mm <sup>2</sup>
Clamping range, min. PUSH IN connection	0.5 mm <sup>2</sup>	Cross-section for connected wire PUSH IN connection, solid, min.	0.5 mm <sup>2</sup>
Cross-section for connected wire, PUSH IN connection, solid, max.	4 mm <sup>2</sup>	Cross-section for connected wire, flexible with wire-end ferrules, 12mm with plastic collar, DIN 46228/1, PUSH IN connection, max.	4 mm <sup>2</sup>
Cross-section for connected wire, flexible with wire-end ferrules, 12mm with plastic collar, DIN 46228/1, PUSH IN connection, min.	0.5 mm <sup>2</sup>	Cross-section for connected wire, flexible with wire-end ferrules, 12mm with plastic collar, DIN 46228/4, PUSH IN connection, max.	4 mm <sup>2</sup>
Cross-section for connected wire, flexible with wire-end ferrules, 12mm with plastic collar, DIN 46228/4, PUSH IN connection, min.	0.5 mm <sup>2</sup>	Cross-section for connected wire, flexible with wire-end ferrules, 8mm with plastic collar, DIN 46228/1, PUSH IN connection, max.	4 mm <sup>2</sup>
Cross-section for connected wire, flexible with wire-end ferrules, 8mm with plastic collar, DIN 46228/1, PUSH IN connection, min.	0.5 mm <sup>2</sup>	Cross-section for connected wire, flexible with wire-end ferrules, 8mm with plastic collar, DIN 46228/4, PUSH IN connection, max.	4 mm <sup>2</sup>
Cross-section for connected wire, flexible with wire-end ferrules, 8mm with plastic collar, DIN 46228/4, PUSH IN connection, min.	0.5 mm <sup>2</sup>	Cross-section for connected wire, flexible, PUSH IN connection, max.	4 mm <sup>2</sup>
Cross-section for connected wire, flexible, PUSH IN connection, min.	0.5 mm <sup>2</sup>	Finely-stranded flexible, max. PUSH IN connection	4 mm <sup>2</sup>
Finely-stranded flexible, min. PUSH IN connection	0.5 mm <sup>2</sup>	Stripping length, PUSH IN connection	12 mm

## PTSI 4/LD 400V AC

Weidmüller Interface GmbH &amp; Co. KG

Klingenbergstraße 26

D-32758 Detmold

Germany

www.weidmueller.com

## Technical data

## Clamping capacity

Connection data - contact element  
Branch / Feed-in

Wire connection method	PUSH IN	
Blade size of operating tool	3.0 x 0.5 mm	
Stripping length	12 mm	
Number of poles	5	
Conductor connection cross-section, solid, max.	4 mm <sup>2</sup>	
Conductor connection cross-section, solid, min.	0.5 mm <sup>2</sup>	
Conductor connection cross-section, stranded, max.	4 mm <sup>2</sup>	
Conductor connection cross-section, stranded, min.	0.5 mm <sup>2</sup>	
Conductor connection cross-section, finely stranded, max.	4 mm <sup>2</sup>	
Conductor connection cross-section, finely stranded, min.	0.5 mm <sup>2</sup>	
Conductor connection cross-section, finest stranded, max.	4 mm <sup>2</sup>	
Conductor connection cross-section, finest stranded, min.	0.5 mm <sup>2</sup>	
Conductor connection cross-section with wire end ferrule	Type of wire end ferrule	12 mm with plastic collar
	Standard	DIN 46228/1
	Cross-section, min.	0.5 mm <sup>2</sup>
	Cross-section, max.	4 mm <sup>2</sup>
	Type of wire end ferrule	12 mm with plastic collar
	Standard	DIN 46228/4
	Cross-section, min.	0.5 mm <sup>2</sup>
	Cross-section, max.	4 mm <sup>2</sup>
	Type of wire end ferrule	8 mm with plastic collar
	Standard	DIN 46228/1
	Cross-section, min.	0.5 mm <sup>2</sup>
	Cross-section, max.	4 mm <sup>2</sup>
	Type of wire end ferrule	8 mm with plastic collar
	Standard	DIN 46228/4
	Cross-section, min.	0.5 mm <sup>2</sup>
	Cross-section, max.	4 mm <sup>2</sup>
	Type of wire end ferrule	Twin wire-end ferrules
	Cross-section, min.	0.5 mm <sup>2</sup>
	Cross-section, max.	4 mm <sup>2</sup>

## General data

Insulating material	Polyamide	Silicone	No
Colour	black	Protection degree	IP20
UL 94 flammability rating	V-0	Type of mounting	Plugged
Function	Fuse	Can be coded	Yes, Coded on PE
Test point	2 mm	Number of poles	5
Number of connections / pole	1	Wire connection method	PUSH IN
Cartridge fuse	6.3 x 32 mm (1/4 x 1 1/4")	Conductor outlet direction	90°
Failure indicator	Red LED	Fuse holder (cartridge holder)	Pivoting

## PTSI 4/LD 400V AC

Weidmüller Interface GmbH &amp; Co. KG

Klingenbergstraße 26

D-32758 Detmold

Germany

www.weidmueller.com

## Technical data

## Rated data acc. to IEC

Rated data acc. to IEC for fuse plug	Voltage type	AC
	Number of phases	3
	Standard	IEC 61984, IEC 60947-7-3
	Rated voltage	500 V
	Rated impulse withstand voltage	6 kV
	Rated current	12 A

## Rated data acc. to UL

Rated data acc. to UL for fuse plug

## Classifications

ETIM 6.0	EC002943	ETIM 7.0	EC002943
ETIM 8.0	EC002943	ETIM 9.0	EC002943
ECLASS 9.0	27-44-02-92	ECLASS 9.1	27-44-03-90
ECLASS 10.0	27-44-02-92	ECLASS 11.0	27-44-02-92
ECLASS 12.0	27-44-02-92	ECLASS 13.0	27-44-02-92

## Environmental Product Compliance

REACH SVHC /

## Approvals

Approvals



ROHS	Conform
UL File Number Search	UL Website
Certificate No. (cURus)	E60693

## Downloads

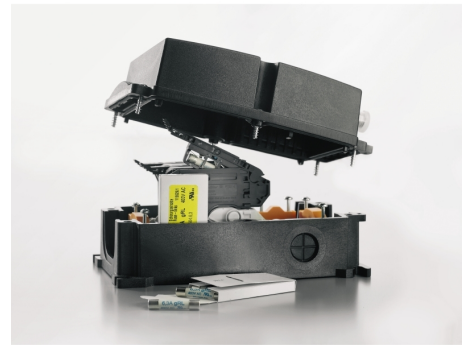
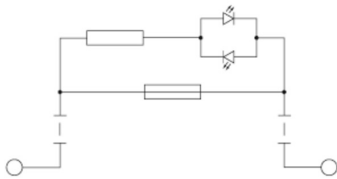
Approval/Certificate/Document of Conformity	<a href="#">UL Certificate FieldPower® terminals and plug-in connectors</a> <a href="#">Manufacturer's Declaration FieldPower® plug-in connectors and HQ adapters</a>
Engineering Data	<a href="#">CAD data – STEP</a>
User Documentation	<a href="#">Datasheet FieldPower® Box Fuse</a>
Catalogues	<a href="#">Catalogues in PDF-format</a>

## PTSI 4/LD 400V AC

**Weidmüller Interface GmbH & Co. KG**  
Klingenbergstraße 26  
D-32758 Detmold  
Germany

[www.weidmueller.com](http://www.weidmueller.com)

## Drawings



## PTSI 4/LD 400V AC

Weidmüller Interface GmbH &amp; Co. KG

Klingenbergstraße 26

D-32758 Detmold

Germany

www.weidmueller.com

## Accessories

## Blank



WS markers are the perfect match for the W-series connectors. Thanks to their system compatibility, the WS tags can also be used with the I-series and the Z-series. The large marking surfaces do not only permit long character strings but also multi-line text. WS markers are ideal for labels with long, customised character strings. Thanks to the proven MultiCard format, printing with PrintJet CONNECT oder/or Plotter is possible.

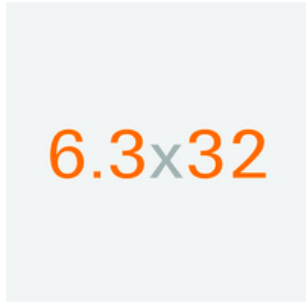
- Can be fitted in strips or individually
- Markers in proven MultiCard format

**For custom printing:** Please send us a file of our labeling software M-Print PRO or M-Print PRO Online (without installation) for your labeling specifications.

## General ordering data

Type	WS 12/6 MC NE WS	Version
Order No.	<a href="#">1609900000</a>	WS, Terminal marker, 12 x 6 mm, Pitch in mm (P): 6.00 Weidmueller,
GTIN (EAN)	4008190203467	Allen-Bradley, white
Qty.	600 pc(s).	

## 6.3x32



For protection against overcurrent, we offer cartridge fuse with dimensions 6.3x32 mm in sizes from 500 mA to 12.5 A.

## General ordering data

Type	GZ 3.0A/F	Version
Order No.	<a href="#">1460610000</a>	Miniature fuse, quick-acting, 3 A, G-Si. 6.3 x 32
GTIN (EAN)	4050118266702	
Qty.	10 pc(s).	
Type	GZ 1.0A/F	Version
Order No.	<a href="#">1460590000</a>	Miniature fuse, quick-acting, 1 A, G-Si. 6.3 x 32
GTIN (EAN)	4050118266634	
Qty.	10 pc(s).	
Type	GZ 2.0A/F	Version
Order No.	<a href="#">1460600000</a>	Miniature fuse, quick-acting, 2 A, G-Si. 6.3 x 32
GTIN (EAN)	4050118266719	
Qty.	10 pc(s).	
Type	GZ 12.5A/F	Version
Order No.	<a href="#">1460650000</a>	Miniature fuse, quick-acting, 12.5 A, G-Si. 6.3 x 32
GTIN (EAN)	4050118266627	
Qty.	10 pc(s).	

Creation date July 2, 2024 10:04:14 PM CEST

## PTSI 4/LD 400V AC

**Weidmüller Interface GmbH & Co. KG**  
 Klingenbergstraße 26  
 D-32758 Detmold  
 Germany

[www.weidmueller.com](http://www.weidmueller.com)

## Accessories

Type	GZ 5.0A/F	Version
Order No.	<a href="#">1460620000</a>	Miniature fuse, quick-acting, 5 A, G-Si. 6.3 x 32
GTIN (EAN)	4050118266610	
Qty.	10 pc(s).	
Type	GZ 10.0A/F	Version
Order No.	<a href="#">1460640000</a>	Miniature fuse, quick-acting, 10 A, G-Si. 6.3 x 32
GTIN (EAN)	4050118266801	
Qty.	10 pc(s).	
Type	GZ 0.5A/F	Version
Order No.	<a href="#">1460580000</a>	Miniature fuse, quick-acting, 0.5 A, G-Si. 6.3 x 32
GTIN (EAN)	4050118266603	
Qty.	10 pc(s).	
Type	GZ 7.0A/F	Version
Order No.	<a href="#">1460630000</a>	Miniature fuse, quick-acting, 7 A, G-Si. 6.3 x 32
GTIN (EAN)	4050118266726	
Qty.	10 pc(s).	

## Tools

Sheathing stripper for PVC cables



## General ordering data

Type	AM 16	Version
Order No.	<a href="#">9204190000</a>	Tools, Sheathing strippers
GTIN (EAN)	4032248608133	
Qty.	1 pc(s).	
Type	AM 25	Version
Order No.	<a href="#">9001540000</a>	Tools, Sheathing strippers
GTIN (EAN)	4008190138271	
Qty.	1 pc(s).	

## PTSI 4/LD 400V AC

Weidmüller Interface GmbH &amp; Co. KG

Klingenbergstraße 26

D-32758 Detmold

Germany

[www.weidmueller.com](http://www.weidmueller.com)

## Accessories

## Slotted screwdriver



Slotted screwdriver with rounded blade SD DIN 5265,  
ISO 2380/2, output to DIN 5264, ISO 2380/1.  
ChromTop tip, SoftFinish grip

## General ordering data

Type	SDS 0.5X3.0X80	Version
Order No.	<a href="#">2749330000</a>	Screwdriver, Blade width (B): 3 mm, Blade length: 80 mm, Blade
GTIN (EAN)	4050118895551	thickness (A): 0.5 mm
Qty.	1 pc(s).	