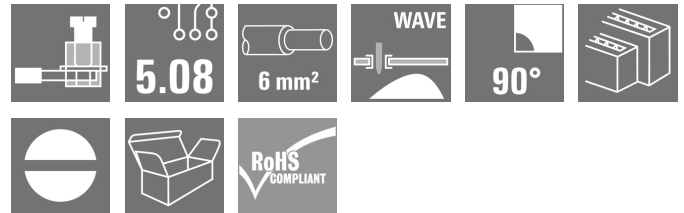
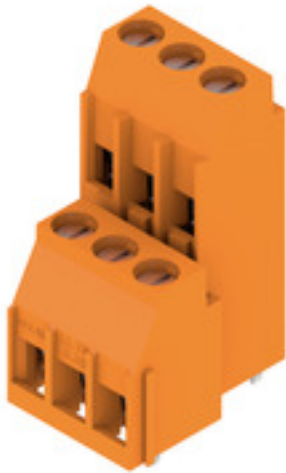


**LL2N 5.08/06/90 3.2SN OR BX****Weidmüller Interface GmbH & Co. KG**

Klingenbergstraße 26

D-32758 Detmold

Germany

[www.weidmueller.com](http://www.weidmueller.com)**Product image**

Low single-tier and multi-tier PCB terminals featuring proven clamping-yoke connections, in 5.00mm and 5.08mm pitch, with 90° conductor outlet direction. Suitable for conductor cross-sections up to 6.0 mm<sup>2</sup>.

**General ordering data**

|              |  |
|--------------|--|
| Version      | Printed circuit board terminals, 5.08 mm, Number of poles: 6, 90°, Solder pin length (l): 3.2 mm, tinned, orange, Clamping yoke connection, Clamping range, max. : 6 mm <sup>2</sup> , Box |
| Order No.    | <a href="#">1934300000</a>   |
| Type         | LL2N 5.08/06/90 3.2SN OR BX  |
| GTIN (EAN)   | 4032248590872  |
| Qty.         | 50 pc(s).  |
| Product data | IEC: 500 V / 32.5 A / 0.5 - 6 mm <sup>2</sup><br>UL: 300 V / 20 A / AWG 26 - AWG 12  |
| Packaging    | Box  |

Creation date October 6, 2024 5:04:48 AM CEST

Catalogue status 28.09.2024 / We reserve the right to make technical changes.

## LL2N 5.08/06/90 3.2SN OR BX

Weidmüller Interface GmbH &amp; Co. KG

Klingenbergstraße 26

D-32758 Detmold

Germany

www.weidmueller.com

## Technical data

## Dimensions and weights

|                          |            |                 |            |
|--------------------------|------------|-----------------|------------|
| Depth                    | 21.94 mm   | Depth (inches)  | 0.864 inch |
| Height                   | 34.5 mm    | Height (inches) | 1.358 inch |
| Height of lowest version | 31.3 mm    | Width           | 18.43 mm   |
| Width (inches)           | 0.726 inch | Net weight      | 9.961 g    |

## System parameters

|  |                             |   |                          |
|--|-----------------------------|---|--------------------------|
| Product family                               | OMNIMATE Signal - series LL | Wire connection method                            | Clamping yoke connection |
| Property, clamping point                     | WireReady                   | Mounting onto the PCB                             | THT solder connection    |
| Conductor outlet direction                   | 90°                         | Pitch in mm (P)                                   | 5.08 mm                  |
| Pitch in inches (P)                          | 0.2 "                       | Number of poles                                   | 6                        |
| Pin series quantity                          | 2                           | Fitted by customer                                | Yes                      |
| Number of rows                               | 2                           | Max. adjacent poles per row                       | 24                       |
| Solder pin length (l)                        | 3.2 mm                      | Solder pin dimensions                             | 0.75 x 0.9 mm            |
| Solder eyelet hole diameter (D)              | 1.3 mm                      | Solder eyelet hole diameter tolerance (D)+ 0,1 mm |                          |
| Number of solder pins per pole               | 1                           | Screwdriver blade                                 | 0.6 x 3.5                |
| Screwdriver blade standard                   | DIN 5264                    | Tightening torque, min.                           | 0.5 Nm                   |
| Tightening torque, max.                      | 0.6 Nm                      | Clamping screw                                    | M 3                      |
| Stripping length                             | 6 mm                        | L1 in mm  | 10.16 mm                 |
| L1 in inches                                 | 0.4 "                       | Touch-safe protection acc. to DIN VDE 0470        | IP 20                    |
| Touch-safe protection acc. to DIN VDE 57 106 | Safe from finger touch      | Protection degree                                 | IP20                     |

## Material data

|                                       |                  |                                       |        |
|---------------------------------------|------------------|---------------------------------------|--------|
| Insulating material                   | Wemid (PA)       | Colour                                | orange |
| Colour chart (similar)                | RAL 2000         | Insulating material group             | I      |
| Comparative Tracking Index (CTI)      | ≥ 600            | UL 94 flammability rating             | V-0    |
| Contact material                      | Copper alloy     | Contact surface                       | tinned |
| Coating                               | 4-6 µm SN        | Tinning type                          | matt   |
| Layer structure of solder connection  | 4...6 µm Sn matt | Storage temperature, min.             | -40 °C |
| Storage temperature, max.             | 70 °C            | Operating temperature, min.           | -50 °C |
| Operating temperature, max.           | 120 °C           | Temperature range, installation, min. | -25 °C |
| Temperature range, installation, max. | 120 °C           |                                       |        |

## Conductors suitable for connection

|   |                      |
|---|----------------------|
| Clamping range, min.  | 0.08 mm <sup>2</sup> |
| Clamping range, max.  | 6 mm <sup>2</sup>    |
| Wire connection cross section AWG, min.                             | AWG 26               |
| Wire connection cross section AWG, max.                             | AWG 12               |
| Solid, min. H05(07) V-U   | 0.5 mm <sup>2</sup>  |
| Solid, max. H05(07) V-U   | 6 mm <sup>2</sup>    |
| Flexible, min. H05(07) V-K  | 0.5 mm <sup>2</sup>  |
| Flexible, max. H05(07) V-K  | 4 mm <sup>2</sup>    |
| w. plastic collar ferrule, DIN 46228 pt 4, 0.5 mm <sup>2</sup> min. |                      |
| w. plastic collar ferrule, DIN 46228 pt 4, 2.5 mm <sup>2</sup> max. |                      |
| w. wire end ferrule, DIN 46228 pt 1, 0.5 mm <sup>2</sup> min.       |                      |

Creation date October 6, 2024 5:04:48 AM CEST

Catalogue status 28.09.2024 / We reserve the right to make technical changes.

## LL2N 5.08/06/90 3.2SN OR BX

Weidmüller Interface GmbH &amp; Co. KG

Klingenbergstraße 26

D-32758 Detmold

Germany

www.weidmueller.com

## Technical data

w. wire end ferrule, DIN 46228 pt 1, max. 2.5 mm<sup>2</sup>

Plug gauge in accordance with EN 60999 a x b; ø 2.8 mm x 2.4 mm; 3.0 mm

|                     |  |                              |                            |
|---------------------|--|------------------------------|----------------------------|
| Clampable conductor | Cross-section for conductor connection | Type                         | fine-wired                 |
|                     |  | nominal                      | 0.5 mm <sup>2</sup>        |
|                     | wire end ferrule                       | Stripping length             | nominal 8 mm               |
|                     |  | Recommended wire-end ferrule | <a href="#">H0.5/12 OR</a> |
|                     |  | Stripping length             | nominal 6 mm               |
|                     |  | Recommended wire-end ferrule | <a href="#">H0.5/6</a>     |
|                     | Cross-section for conductor connection | Type                         | fine-wired                 |
|                     |  | nominal                      | 0.75 mm <sup>2</sup>       |
|                     | wire end ferrule                       | Stripping length             | nominal 8 mm               |
|                     |  | Recommended wire-end ferrule | <a href="#">H0.75/12 W</a> |
|                     |  | Stripping length             | nominal 6 mm               |
|                     |  | Recommended wire-end ferrule | <a href="#">H0.75/6</a>    |
|                     | Cross-section for conductor connection | Type                         | fine-wired                 |
|                     |  | nominal                      | 1 mm <sup>2</sup>          |
|                     | wire end ferrule                       | Stripping length             | nominal 8 mm               |
|                     |  | Recommended wire-end ferrule | <a href="#">H1.0/12 GE</a> |
|                     |  | Stripping length             | nominal 6 mm               |
|                     |  | Recommended wire-end ferrule | <a href="#">H1.0/6</a>     |

Reference text Length of ferrules is to be chosen depending on the product and the rated voltage., The outside diameter of the plastic collar should not be larger than the pitch (P)

## Rated data acc. to IEC

|   |                        |   |                   |
|---|------------------------|---|-------------------|
| tested acc. to standard   | IEC 60664-1, IEC 61984 | Rated current, min. number of poles (Tu=20°C)                         | 32.5 A            |
| Rated current, max. number of poles (Tu=20°C)                             | 26 A                   | Rated current, min. number of poles (Tu=40°C)                         | 27.5 A            |
| Rated current, max. number of poles (Tu=40°C)                             | 22 A                   | Rated voltage for surge voltage class / pollution degree II/2         | 500 V             |
| Rated voltage for surge voltage class / pollution degree III/2            | 320 V                  | Rated voltage for surge voltage class / pollution degree III/3        | 250 V             |
| Rated impulse voltage for surge voltage class/ pollution degree II/2      | 4 kV                   | Rated impulse voltage for surge voltage class/ pollution degree III/2 | 4 kV              |
| Rated impulse voltage for surge voltage class/ contamination degree III/3 | 4 kV                   | Short-time withstand current resistance                               | 3 x 1s with 120 A |

## Rated data acc. to CSA

|                                   |   |                                   |                |
|-----------------------------------|---|-----------------------------------|----------------|
| Institute (CSA)                   |  | Certificate No. (CSA)             | 200039-1202191 |
| Rated voltage (Use group B / CSA) | 300 V   | Rated voltage (Use group D / CSA) | 300 V          |
| Rated current (Use group B / CSA) | 20 A  | Rated current (Use group D / CSA) | 10 A           |
| Wire cross-section, AWG, min.     | AWG 26  | Wire cross-section, AWG, max.     | AWG 12         |
| Reference to approval values      | Specifications are maximum values, details - see approval certificate.              |                                   |                |

## LL2N 5.08/06/90 3.2SN OR BX

Weidmüller Interface GmbH &amp; Co. KG

Klingenbergstraße 26

D-32758 Detmold

Germany

www.weidmueller.com

## Technical data

## Rated data acc. to UL 1059

Rated voltage (Use group B / UL 1059) 300 V

Rated current (Use group B / UL 1059) 20 A

Wire cross-section, AWG, min. AWG 26

Rated voltage (Use group D / UL 1059) 300 V

Rated current (Use group D / UL 1059) 10 A

Wire cross-section, AWG, max. AWG 12

## Packing

|           |       |            |        |
|-----------|-------|------------|--------|
| Packaging | Box   | VPE length | 224 mm |
| VPE width | 74 mm | VPE height | 60 mm  |

## Classifications

|             |             |             |             |
|-------------|-------------|-------------|-------------|
| ETIM 6.0    | EC002643    | ETIM 7.0    | EC002643    |
| ETIM 8.0    | EC002643    | ETIM 9.0    | EC002643    |
| ECLASS 9.0  | 27-44-04-01 | ECLASS 9.1  | 27-44-04-01 |
| ECLASS 10.0 | 27-44-04-01 | ECLASS 11.0 | 27-46-01-01 |
| ECLASS 12.0 | 27-46-01-01 | ECLASS 13.0 | 27-46-01-01 |
| ECLASS 14.0 | 27-46-01-01 |             |             |

## Environmental Product Compliance

|                        |                             |
|------------------------|-----------------------------|
| REACH SVHC             | /                           |
| RoHS Compliance Status | Compliant without exemption |

## Important note

|                |  |
|----------------|--|
| IPC conformity | Conformity: The products are developed, manufactured and delivered according international recognized standards and norms and comply with the assured properties in the data sheet resp. fulfill decorative properties in accordance with IPC-A-610 "Class 2". Further claims on the products can be evaluated on request. |
| Notes          | <ul style="list-style-type: none"> <li>Long term storage of the product with average temperature of 50 °C and maximum humidity 70%, 36 months</li> </ul>   |

## Approvals

Approvals



|      |         |
|------|---------|
| ROHS | Conform |
|------|---------|

## Downloads

|                  |  |
|------------------|--|
| Engineering Data | <a href="#">CAD data – STEP</a>          |
| Catalogues       | <a href="#">Catalogues in PDF-format</a> |

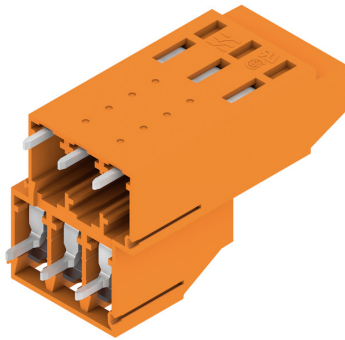
## LL2N 5.08/06/90 3.2SN OR BX

**Weidmüller Interface GmbH & Co. KG**  
 Klingenbergstraße 26  
 D-32758 Detmold  
 Germany

[www.weidmueller.com](http://www.weidmueller.com)

## Drawings

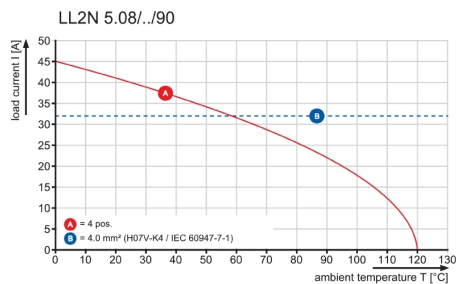
## Product image



## Dimensional drawing



## Graph



**LL2N 5.08/06/90 3.2SN OR BX****Weidmüller Interface GmbH & Co. KG**

Klingenbergstraße 26

D-32758 Detmold

Germany

[www.weidmueller.com](http://www.weidmueller.com)**Accessories****Slotted screwdriver**

Slotted screwdriver with rounded blade SD DIN 5265, ISO 2380/2, output to DIN 5264, ISO 2380/1. ChromTop tip, SoftFinish grip

**General ordering data**

|            |                            |                          |
|------------|----------------------------|--------------------------|
| Type       | SDS 0.6X3.5X200            | Version                  |
| Order No.  | <a href="#">9010110000</a> | Screwdriver, Screwdriver |
| GTIN (EAN) | 4032248300754              |                          |
| Qty.       | 1 pc(s).                   |                          |
| Type       | SDS 0.6X3.5X100            | Version                  |
| Order No.  | <a href="#">9008330000</a> | Screwdriver, Screwdriver |
| GTIN (EAN) | 4032248056286              |                          |
| Qty.       | 1 pc(s).                   |                          |

**Slotted screwdriver**

VDE insulated slot-head screwdriver, SDI DIN 7437, ISO 2380/2, drive output acc. to DIN 5264, ISO 2380/1. SoftFinish grip

**General ordering data**

|            |                            |                          |
|------------|----------------------------|--------------------------|
| Type       | SDIS 0.6X3.5X100           | Version                  |
| Order No.  | <a href="#">9008390000</a> | Screwdriver, Screwdriver |
| GTIN (EAN) | 4032248056354              |                          |
| Qty.       | 1 pc(s).                   |                          |

## Recommended wave soldering profiles

**Weidmüller Interface GmbH & Co. KG**  
Klingenbergstraße 16  
D-32758 Detmold  
Germany  
Fon: +49 5231 14-0  
Fax: +49 5231 14-292083  
[www.weidmueller.com](http://www.weidmueller.com)

### Single Wave:



### Double Wave:



### Wave soldering profiles

Wired connection elements should be processed in accordance with the DIN EN 61760-1 standard. We have included two recommendations for practical wave soldering profiles, with which Weidmüller PCB terminals and connectors are qualified.

When choosing a suitable profile for your application, the following factors also need to be considered:

- PCB thickness
- Proportion of Cu in the layers
- Single/double-sided assembly
- Product range
- Heating and cooling rates

The single and double wave profiles each indicate the recommended operating range, including the maximum soldering temperature of 260°C. In practice, the maximum soldering temperature is quite often well below the above maximum profile.

We reserve the right to make technical changes.