

DSTV HE BL24 S**Weidmüller Interface GmbH & Co. KG**

Klingenbergstraße 26

D-32758 Detmold

Germany

www.weidmueller.com

A heavy-duty connector consists of a connector insert and its protective housing. The insert is therefore the heart of the heavy-duty connector. It is responsible for electrical functioning. Connector inserts from Weidmüller are made from high-quality insulation materials, which allow secure transmission of high voltages in a tight space. Moreover, we use only a single type of plastic in our entire product line. This plastic is UL listed, and suitable for railway applications. This allows unlimited world-wide use of the RockStar® connector.

General ordering data

| | |
|------------|---|
| Version | HDC insert, Female, 500 V, 16 A, Number of poles: 24, Screw connection, Size: 8 |
| Order No. | 1848590000 |
| Type | DSTV HE BL24 S |
| GTIN (EAN) | 4032248371709 |
| Qty. | 10 pc(s). |

DSTV HE BL24 S

Weidmüller Interface GmbH & Co. KG

Klingenbergstraße 26

D-32758 Detmold

Germany

www.weidmueller.com

Technical data

Dimensions and weights

| | |
|------------|-------|
| Net weight | 272 g |
|------------|-------|

General data

| | | | |
|--------------------------------------|-------------|------------------------------|---|
| BG | 8 | Colour | beige |
| Free from halogens | | Insulating material | PC glass-fibre reinforced (UL-listed and railway-certified) |
| | false | | |
| Insulating material group | IIIa | Insulation strength | 10 ¹⁰ Ω |
| Low smoke acc. DIN EN 45545-2 | Yes | Material | Copper alloy |
| Max. torque for main contact | 0.7 Nm | Min. torque for main contact | 0.5 Nm |
| Number of poles | 24 | Plugging cycles, silver | ≥ 200 |
| Pollution severity | 3 | Rated current (DIN EN 61984) | 16 A |
| Rated impulse voltage (DIN EN 61984) | 6 kV | Rated voltage (DIN EN 61984) | 500 V |
| Rated voltage according to UL/CSA | 600 V AC/DC | Series | DSTV-HE |
| Size | 8 | Surface finish | Silver passivated |
| Type | Female | Type of connection | Screw connection |
| UL 94 flammability rating | V-0 | Volume resistance | ≤3 mΩ |

Connection data PE

| | | | |
|---------------------------------------|-------------------|---------------------------------------|--------------|
| Blade size, crosshead | size PZ1 | Blade size, slotted (PE connection) | SD 0.8 x 4.0 |
| Connection type PE | Screw connection | Fixing screw | M 4 |
| Rated cross-section | 4 mm ² | Stripping length PE connection | 10 mm |
| Tightening torque, max. PE connection | 1.6 Nm | Tightening torque, min. PE connection | 1.2 Nm |
| Wire cross section, AWG (PE), max. | AWG 12 | Wire cross section, AWG (PE), min. | AWG 20 |

Version

| | | | |
|---|-------------------|---|---------------------|
| BG | 8 | Blade size | size PZ0 |
| Blade size, slotted (screw connection) | SD 0.6 x 3.5 | Clamping screw | M 3 |
| Conductor cross-section, max. | 4 mm ² | Conductor cross-section, min. | 0.5 mm ² |
| Material | Copper alloy | Max. torque for main contact | 0.7 Nm |
| Min. torque for main contact | 0.5 Nm | Size | 8 |
| Stripping length, rated connection | 12 mm | Surface finish | Silver passivated |
| Type of connection | Screw connection | Volume resistance | ≤3 mΩ |
| Wire connection cross section AWG, max. | AWG 12 | Wire connection cross section AWG, min. | AWG 20 |
| Wire connection cross section, finely stranded, max. | 4 mm ² | Wire connection cross section, finely stranded, min. | 0.5 mm ² |
| Wire connection cross-section, finely stranded with wire-end ferrules DIN 46228/4, max. | 4 mm ² | Wire connection cross-section, finely stranded with wire-end ferrules DIN 46228/4, min. | 0.5 mm ² |
| Wire cross-section, solid, max. | 4 mm ² | Wire cross-section, solid, min. | 0.5 mm ² |

Classifications

| | | | |
|-------------|-------------|-------------|-------------|
| ETIM 6.0 | EC002311 | ETIM 7.0 | EC002311 |
| ETIM 8.0 | EC002311 | ETIM 9.0 | EC002311 |
| ECLASS 9.0 | 27-44-02-03 | ECLASS 9.1 | 27-44-02-03 |
| ECLASS 10.0 | 27-44-02-03 | ECLASS 11.0 | 27-44-02-03 |
| ECLASS 12.0 | 27-44-02-03 | ECLASS 13.0 | 27-44-02-03 |

DSTV HE BL24 S

Weidmüller Interface GmbH & Co. KG

Klingenbergstraße 26

D-32758 Detmold

Germany

www.weidmueller.com

Technical data

Environmental Product Compliance

| | |
|------------|--------------------------------------|
| REACH SVHC | Lead 7439-92-1 |
| SCIP | d0694b55-f1aa-4d24-a200-c532c6ffc384 |

Approvals

Approvals



| | |
|-----------------------|------------|
| ROHS | Conform |
| UL File Number Search | UL Website |
| Certificate No. (UR) | E92202 |

Downloads

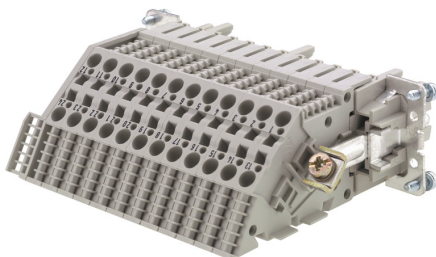
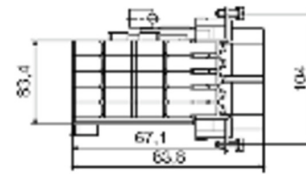
| | |
|---|--|
| Approval/Certificate/Document of Conformity | Manufacturer's declaration |
| Engineering Data | CAD data – STEP |
| Catalogues | Catalogues in PDF-format |
| Brochures | FL FIELDWIRING EN |

DSTV HE BL24 S

Weidmüller Interface GmbH & Co. KG
Klingenbergstraße 26
D-32758 Detmold
Germany

www.weidmueller.com

Drawings



DSTV HE BL24 S**Weidmüller Interface GmbH & Co. KG**

Klingenbergstraße 26

D-32758 Detmold

Germany

www.weidmueller.com**Accessories****Blank**

MultiFit is the Weidmüller marker system used for other makes of terminals. Similar to the Weidmüller Dekafix, the markers of the MultiFit family are available ready-for-use with standard printing.

We recommend to carry out a test with sample markers on the terminals used when using MultiFit for the first time.

- One marker, suitable for different makes of terminals.
- Ready-to-use markers with standard printing
- Blank markers for printing with the PrintJet CONNECT or Plotter
- Delivery of individually printed markers according to customer CAE data or specifications
- One marking system for all applications

For custom printing: Please send us a file of our labeling software M-Print PRO or M-Print PRO Online (without installation) for your labeling specifications.

General ordering data

| | | |
|------------|----------------------------|--|
| Type | MF 10/6 MC NE WS | Version |
| Order No. | 1677220000 | MultiFit, Terminal marker, 10 x 6 mm, Pitch in mm (P): 6.00 Phoenix, |
| GTIN (EAN) | 4008190475529 | Wieland, Legrand, Telemecanique, Entrelec, white |
| Qty. | 600 pc(s). | |

DSTV HE BL24 S

Weidmüller Interface GmbH & Co. KG

Klingenbergstraße 26

D-32758 Detmold

Germany

www.weidmueller.com

Accessories

Blank



MultiFit is the Weidmüller marker system used for other makes of terminals. Similar to the Weidmüller Dekafix, the markers of the MultiFit family are available ready-for-use with standard printing.

We recommend to carry out a test with sample markers on the terminals used when using MultiFit for the first time.

- One marker, suitable for different makes of terminals.
- Ready-to-use markers with standard printing
- Blank markers for printing with the PrintJet CONNECT or Plotter
- Delivery of individually printed markers according to customer CAE data or specifications
- One marking system for all applications

For custom printing: Please send us a file of our labeling software M-Print PRO or M-Print PRO Online (without installation) for your labeling specifications.

General ordering data

| | | |
|------------|----------------------------|--|
| Type | MF 12/5 MC NE WS | Version |
| Order No. | 1677180000 | MultiFit, Terminal marker, 12 x 5 mm, Pitch in mm (P): 5.00 Phoenix, |
| GTIN (EAN) | 4008190470579 | Wieland, Legrand, Telemecanique, Entelec, WAGO, white |
| Qty. | 600 pc(s). | |

Slotted screwdriver



Slotted screwdriver with rounded blade SD DIN 5265, ISO 2380/2, output to DIN 5264, ISO 2380/1. ChromTop tip, SoftFinish grip

General ordering data

| | | |
|------------|----------------------------|--------------------------|
| Type | SDS 0.8X4.0X100 | Version |
| Order No. | 9008340000 | Screwdriver, Screwdriver |
| GTIN (EAN) | 4032248056293 | |
| Qty. | 1 pc(s). | |

| | | |
|------------|----------------------------|--------------------------|
| Type | SDS 0.6X3.5X100 | Version |
| Order No. | 9008330000 | Screwdriver, Screwdriver |
| GTIN (EAN) | 4032248056286 | |
| Qty. | 1 pc(s). | |

DSTV HE BL24 S**Weidmüller Interface GmbH & Co. KG**

Klingenbergstraße 26

D-32758 Detmold

Germany

www.weidmueller.com**Accessories****Slotted screwdriver**

VDE insulated slot-head screwdriver, SDI DIN 7437, ISO 2380/2, drive output acc. to DIN 5264, ISO 2380/1.
SoftFinish grip

General ordering data

| | | |
|------------|----------------------------|--------------------------|
| Type | SDIS 0.8X4.0X100 | Version |
| Order No. | 9008400000 | Screwdriver, Screwdriver |
| GTIN (EAN) | 4032248056361 | |
| Qty. | 1 pc(s). | |
| Type | SDIS 0.6X3.5X100 | Version |
| Order No. | 9008390000 | Screwdriver, Screwdriver |
| GTIN (EAN) | 4032248056354 | |
| Qty. | 1 pc(s). | |