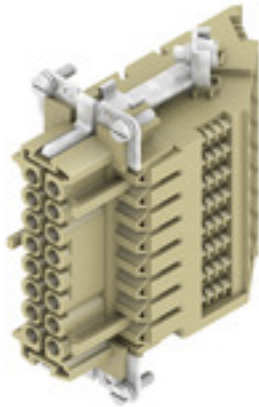


**DSTV HE BL16 S****Weidmüller Interface GmbH & Co. KG**

Klingenbergstraße 26

D-32758 Detmold

Germany

[www.weidmueller.com](http://www.weidmueller.com)

A heavy-duty connector consists of a connector insert and its protective housing. The insert is therefore the heart of the heavy-duty connector. It is responsible for electrical functioning. Connector inserts from Weidmüller are made from high-quality insulation materials, which allow secure transmission of high voltages in a tight space. Moreover, we use only a single type of plastic in our entire product line. This plastic is UL listed, and suitable for railway applications. This allows unlimited world-wide use of the RockStar® connector.

**General ordering data**

|            |   |
|------------|---|
| Version    | HDC insert, Female, 500 V, 16 A, Number of poles: 16, Screw connection, Size: 6 |
| Order No.  | <a href="#">1848580000</a>  |
| Type       | DSTV HE BL16 S  |
| GTIN (EAN) | 4032248371693   |
| Qty.       | 10 pc(s).   |

## DSTV HE BL16 S

Weidmüller Interface GmbH &amp; Co. KG

Klingenbergstraße 26

D-32758 Detmold

Germany

www.weidmueller.com

## Technical data

## Dimensions and weights

|            |         |
|------------|---------|
| Net weight | 188.4 g |
|------------|---------|

## General data

|                                      |             |                              |   |
|--------------------------------------|-------------|------------------------------|---|
| BG                                   | 6           | Colour                       | beige   |
| Free from halogens                   |             | Insulating material          | PC glass-fibre reinforced (UL-listed and railway-certified) |
|                                      | false       |                              |   |
| Insulating material group            | IIIa        | Insulation strength          | 10 <sup>10</sup> Ω  |
| Low smoke acc. DIN EN 45545-2        | Yes         | Material                     | Copper alloy  |
| Max. torque for main contact         | 0.7 Nm      | Min. torque for main contact | 0.5 Nm  |
| Number of poles                      | 16          | Plugging cycles, silver      | ≥ 200   |
| Pollution severity                   | 3           | Rated current (DIN EN 61984) | 16 A  |
| Rated impulse voltage (DIN EN 61984) | 6 kV        | Rated voltage (DIN EN 61984) | 500 V   |
| Rated voltage according to UL/CSA    | 600 V AC/DC | Series                       | DSTV-HE   |
| Size                                 | 6           | Surface finish               | Silver passivated   |
| Type                                 | Female      | Type of connection           | Screw connection  |
| UL 94 flammability rating            | V-0         | Volume resistance            | ≤3 mΩ   |

## Connection data PE

|                                       |                   |                                       |              |
|---------------------------------------|-------------------|---------------------------------------|--------------|
| Blade size, crosshead                 | size PZ1          | Blade size, slotted (PE connection)   | SD 0.8 x 4.0 |
| Connection type PE                    | Screw connection  | Fixing screw                          | M 4          |
| Rated cross-section                   | 4 mm <sup>2</sup> | Stripping length PE connection        | 10 mm        |
| Tightening torque, max. PE connection | 1.6 Nm            | Tightening torque, min. PE connection | 1.2 Nm       |
| Wire cross section, AWG (PE), max.    | AWG 12            | Wire cross section, AWG (PE), min.    | AWG 20       |

## Version

|   |                   |   |                     |
|---|-------------------|---|---------------------|
| BG  | 6                 | Blade size  | size PZ0            |
| Blade size, slotted (screw connection)  | SD 0.6 x 3.5      | Clamping screw  | M 3                 |
| Conductor cross-section, max.   | 4 mm <sup>2</sup> | Conductor cross-section, min.   | 0.5 mm <sup>2</sup> |
| Material  | Copper alloy      | Max. torque for main contact  | 0.7 Nm              |
| Min. torque for main contact  | 0.5 Nm            | Size  | 6                   |
| Stripping length, rated connection  | 12 mm             | Surface finish  | Silver passivated   |
| Type of connection  | Screw connection  | Volume resistance   | ≤3 mΩ               |
| Wire connection cross section AWG, max.   | AWG 12            | Wire connection cross section AWG, min.   | AWG 20              |
| Wire connection cross section, finely stranded, max.                                    | 4 mm <sup>2</sup> | Wire connection cross section, finely stranded, min.                                    | 0.5 mm <sup>2</sup> |
| Wire connection cross-section, finely stranded with wire-end ferrules DIN 46228/4, max. | 4 mm <sup>2</sup> | Wire connection cross-section, finely stranded with wire-end ferrules DIN 46228/4, min. | 0.5 mm <sup>2</sup> |
| Wire cross-section, solid, max.   | 4 mm <sup>2</sup> | Wire cross-section, solid, min.   | 0.5 mm <sup>2</sup> |

## Classifications

|             |             |             |             |
|-------------|-------------|-------------|-------------|
| ETIM 6.0    | EC002311    | ETIM 7.0    | EC002311    |
| ETIM 8.0    | EC002311    | ETIM 9.0    | EC002311    |
| ECLASS 9.0  | 27-44-02-03 | ECLASS 9.1  | 27-44-02-03 |
| ECLASS 10.0 | 27-44-02-03 | ECLASS 11.0 | 27-44-02-03 |
| ECLASS 12.0 | 27-44-02-03 | ECLASS 13.0 | 27-44-02-03 |

## DSTV HE BL16 S

Weidmüller Interface GmbH &amp; Co. KG

Klingenbergstraße 26

D-32758 Detmold

Germany

[www.weidmueller.com](http://www.weidmueller.com)

## Technical data

## Environmental Product Compliance

|            |                                      |
|------------|--------------------------------------|
| REACH SVHC | Lead 7439-92-1                       |
| SCIP       | d0694b55-f1aa-4d24-a200-c532c6ffc384 |

## Approvals

Approvals



|                       |            |
|-----------------------|------------|
| ROHS                  | Conform    |
| UL File Number Search | UL Website |
| Certificate No. (UR)  | E92202     |

## Downloads

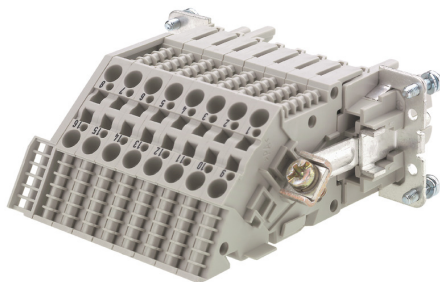
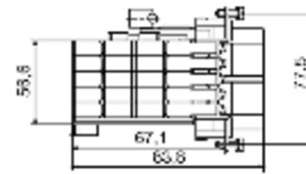
|   |  |
|---|--|
| Approval/Certificate/Document of Conformity | <a href="#">Manufacturer's declaration</a> |
| Engineering Data                            | <a href="#">CAD data – STEP</a>            |
| Catalogues                                  | <a href="#">Catalogues in PDF-format</a>   |
| Brochures                                   | <a href="#">FL FIELDWIRING EN</a>          |

## DSTV HE BL16 S

**Weidmüller Interface GmbH & Co. KG**  
Klingenbergstraße 26  
D-32758 Detmold  
Germany

[www.weidmueller.com](http://www.weidmueller.com)

## Drawings



## DSTV HE BL16 S

Weidmüller Interface GmbH &amp; Co. KG

Klingenbergstraße 26

D-32758 Detmold

Germany

[www.weidmueller.com](http://www.weidmueller.com)

## Accessories

## Blank



MultiFit is the Weidmüller marker system used for other makes of terminals. Similar to the Weidmüller Dekafix, the markers of the MultiFit family are available ready-for-use with standard printing.

We recommend to carry out a test with sample markers on the terminals used when using MultiFit for the first time.

- One marker, suitable for different makes of terminals.
- Ready-to-use markers with standard printing
- Blank markers for printing with the PrintJet CONNECT or Plotter
- Delivery of individually printed markers according to customer CAE data or specifications
- One marking system for all applications

**For custom printing:** Please send us a file of our labeling software M-Print PRO or M-Print PRO Online (without installation) for your labeling specifications.

## General ordering data

|            |                            |  |
|------------|----------------------------|--|
| Type       | MF 10/6 MC NE WS           | Version  |
| Order No.  | <a href="#">1677220000</a> | MultiFit, Terminal marker, 10 x 6 mm, Pitch in mm (P): 6.00 Phoenix, |
| GTIN (EAN) | 4008190475529              | Wieland, Legrand, Telemecanique, Entrelec, white                     |
| Qty.       | 600 pc(s).                 |  |

## DSTV HE BL16 S

Weidmüller Interface GmbH &amp; Co. KG

Klingenbergstraße 26

D-32758 Detmold

Germany

www.weidmueller.com

## Accessories

## Blank



MultiFit is the Weidmüller marker system used for other makes of terminals. Similar to the Weidmüller Dekafix, the markers of the MultiFit family are available ready-for-use with standard printing.

We recommend to carry out a test with sample markers on the terminals used when using MultiFit for the first time.

- One marker, suitable for different makes of terminals.
- Ready-to-use markers with standard printing
- Blank markers for printing with the PrintJet CONNECT or Plotter
- Delivery of individually printed markers according to customer CAE data or specifications
- One marking system for all applications

**For custom printing:** Please send us a file of our labeling software M-Print PRO or M-Print PRO Online (without installation) for your labeling specifications.

## General ordering data

| Type       | MF 12/5 MC NE WS           | Version  |
|------------|----------------------------|--|
| Order No.  | <a href="#">1677180000</a> | MultiFit, Terminal marker, 12 x 5 mm, Pitch in mm (P): 5.00 Phoenix, |
| GTIN (EAN) | 4008190470579              | Wieland, Legrand, Telemecanique, Entelec, WAGO, white                |
| Qty.       | 600 pc(s).                 |  |

## Slotted screwdriver



Slotted screwdriver with rounded blade SD DIN 5265, ISO 2380/2, output to DIN 5264, ISO 2380/1. ChromTop tip, SoftFinish grip

## General ordering data

| Type       | SDS 0.8X4.0X100            | Version                  |
|------------|----------------------------|--------------------------|
| Order No.  | <a href="#">9008340000</a> | Screwdriver, Screwdriver |
| GTIN (EAN) | 4032248056293              |                          |
| Qty.       | 1 pc(s).                   |                          |
| Type       | SDS 0.6X3.5X100            | Version                  |
| Order No.  | <a href="#">9008330000</a> | Screwdriver, Screwdriver |
| GTIN (EAN) | 4032248056286              |                          |
| Qty.       | 1 pc(s).                   |                          |

**DSTV HE BL16 S****Weidmüller Interface GmbH & Co. KG**

Klingenbergstraße 26

D-32758 Detmold

Germany

[www.weidmueller.com](http://www.weidmueller.com)**Accessories****Slotted screwdriver**

VDE insulated slot-head screwdriver, SDI DIN 7437, ISO 2380/2, drive output acc. to DIN 5264, ISO 2380/1. SoftFinish grip

**General ordering data**

|            |                            |                          |
|------------|----------------------------|--------------------------|
| Type       | SDIS 0.8X4.0X100           | Version                  |
| Order No.  | <a href="#">9008400000</a> | Screwdriver, Screwdriver |
| GTIN (EAN) | 4032248056361              |                          |
| Qty.       | 1 pc(s).                   |                          |
| Type       | SDIS 0.6X3.5X100           | Version                  |
| Order No.  | <a href="#">9008390000</a> | Screwdriver, Screwdriver |
| GTIN (EAN) | 4032248056354              |                          |
| Qty.       | 1 pc(s).                   |                          |