

**HDC 32A SBU 2PG21G****Weidmüller Interface GmbH & Co. KG**

Klingenbergstraße 26

D-32758 Detmold

Germany

[www.weidmueller.com](http://www.weidmueller.com)**IP65**

The special die-cast alloy and the multi-layered surface sealing provide complete protection for the HDC housings.

The cleverly designed interlock system is manufactured from stainless steel. This guarantees a long lifespan with high resistance to corrosion and impact.

The housing interlock system provides integrated safety. Our unique, patented spring system provides the housing interlock with a secure grip and prevents accidental opening.

The laser marking allows for easy and quick identification. Each housing is permanently labelled with a laser marking so that each product can be quickly designated and positioned.

Weidmüller RockStar® IP 65 / NEMA Type 4X housings - your first choice for industrial housings with IP 65 protection.

**General ordering data**

Version	HDC enclosures, Size: 7, Protection degree: IP65 (in plugged condition), Base housing, Side-locking clamp on lower side, Standard, Size of cable entries: PG 21
Order No.	<a href="#">1665980000</a>
Type	HDC 32A SBU 2PG21G
GTIN (EAN)	4008190423018
Qty.	1 pc(s).

## HDC 32A SBU 2PG21G

Weidmüller Interface GmbH &amp; Co. KG

Klingenbergstraße 26

D-32758 Detmold

Germany

www.weidmueller.com

## Technical data

## Dimensions and weights

Height	75 mm	Height (inches)	2.953 inch
Width	68 mm	Width (inches)	2.677 inch
Mounting dimension - height	46 mm	Mounting dimension - width	92 mm
Net weight	448 g		

## Temperatures

Limit temperature	-40 °C ... 125 °C
-------------------	-------------------

## Dimensions

Cable entry	w. thread	Height of base B1	5 mm
Height of housing B	75 mm	Hole pitch length A2	92 mm
Total length housing	82 mm	Width base C1	64.5 mm
Width housing C	56 mm		

## General data

EMC housings	No	Housing main material	diecast aluminium
Material of locking element	Stainless steel, rust-proof	Protection degree	IP65 (in plugged condition)
Surface finish	Powder coating	Tightening torque	1.2 Nm

## Version

BG	7	Cable entry	w. thread
Clamp version	Side-locking clamp	Colour (RAL)	RAL 7035
Design	Standard	Design of housing	Base housing
Design of locking system	Side-locking clamp on lower side	Internal thread	PG 21
Number of cable entry on top	0	Number of cable entry sideways	2
Sealing	NBR	Size	7
Size of cable entries	PG 21	Suitable for ModuPlug®	No
Tightening torque	1.2 Nm	Top part/bottom part/lid	lower part
Type	Base housing		

## Classifications

ETIM 6.0	EC000437	ETIM 7.0	EC000437
ETIM 8.0	EC000437	ETIM 9.0	EC000437
ECLASS 9.0	27-44-02-02	ECLASS 9.1	27-44-02-02
ECLASS 10.0	27-44-02-02	ECLASS 11.0	27-44-02-02
ECLASS 12.0	27-44-02-02	ECLASS 13.0	27-44-02-02

Substance	Acetone
Chemical resistance	Conditionally resistant
Substance	Drilling oil
Chemical resistance	Resistant
Substance	Diesel
Chemical resistance	Resistant
Substance	Ethyl alcohol
Chemical resistance	Resistant

Creation date July 7, 2024 8:49:28 PM CEST

## HDC 32A SBU 2PG21G

Weidmüller Interface GmbH &amp; Co. KG

Klingenbergstraße 26

D-32758 Detmold

Germany

www.weidmueller.com

## Technical data

Substance	Transmission oil
Chemical resistance	Resistant
Substance	Hydraulic oil
Chemical resistance	Resistant
Substance	Coolant
Chemical resistance	Resistant
Substance	Petroleum benzine
Chemical resistance	Resistant
Substance	Sweat
Chemical resistance	Resistant
Substance	Premium gasoline
Chemical resistance	Conditionally resistant
Substance	Water
Chemical resistance	Resistant
Substance	UV
Chemical resistance	Unstable
Substance	Ozone
Chemical resistance	Unstable

## Environmental Product Compliance

REACH SVHC	Lead 7439-92-1 Potassium perfluorobutane sulfonate 29420-49-3
SCIP	e98b2b24-ba23-41bf-8d19-0dda3647412f
Chemical resistance	de.myview.objectmodel.impl.BlockImpl@352a4d49 de.myview.objectmodel.impl.BlockImpl@61369a4e de.myview.objectmodel.impl.BlockImpl@3645dbdb de.myview.objectmodel.impl.BlockImpl@6eeaa9b1 de.myview.objectmodel.impl.BlockImpl@9cde120 de.myview.objectmodel.impl.BlockImpl@5cfceebd de.myview.objectmodel.impl.BlockImpl@447f6dfa de.myview.objectmodel.impl.BlockImpl@7fe3f3e5 de.myview.objectmodel.impl.BlockImpl@1941c9d8 de.myview.objectmodel.impl.BlockImpl@22f3554b de.myview.objectmodel.impl.BlockImpl@1ddcec52 de.myview.objectmodel.impl.BlockImpl@7d4058d7 de.myview.objectmodel.impl.BlockImpl@6ad851ae

## Approvals

Approvals



ROHS	Conform
UL File Number Search	UL Website
Certificate No. (cULus)	E92202

### HDC 32A SBU 2PG21G

**Weidmüller Interface GmbH & Co. KG**

Klingenbergstraße 26

D-32758 Detmold

Germany

[www.weidmueller.com](http://www.weidmueller.com)

## Technical data

### Downloads

Approval/Certificate/Document of Conformity

[Manufacturer's declaration](#)

Engineering Data

[CAD data – STEP](#)

Product Change Notification

[20220214 Technical change to HDC housings](#)

[20220214 Technische Änderung bei HDC-Gehäusen](#)

Technical Documentation

[1665980000 HDC\\_32A\\_SBU\\_2PG21G\\_STP\\_Blatt\\_1.pdf](#)

Catalogues

[Catalogues in PDF-format](#)

Brochures

[FL FIELDWIRING EN](#)

[FL FIELDWIRING EN](#)

### HDC 32A SBU 2PG21G

**Weidmüller Interface GmbH & Co. KG**

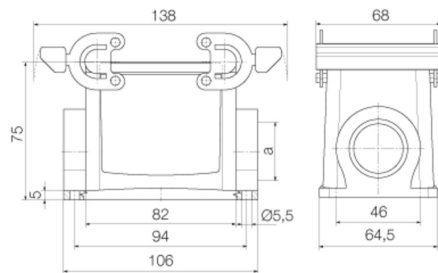
Klingenbergstraße 26

D-32758 Detmold

Germany

[www.weidmueller.com](http://www.weidmueller.com)

## Drawings



**HDC 32A SBU 2PG21G****Weidmüller Interface GmbH & Co. KG**

Klingenbergstraße 26

D-32758 Detmold

Germany

[www.weidmueller.com](http://www.weidmueller.com)**Accessories****Hood, Cable Entry at top**

The special die-cast alloy and the multi-layered surface sealing provide complete protection for the HDC housings.

The cleverly designed interlock system is manufactured from stainless steel. This guarantees a long lifespan with high resistance to corrosion and impact.

The housing interlock system provides integrated safety. Our unique, patented spring system provides the housing interlock with a secure grip and prevents accidental opening.

The laser marking allows for easy and quick identification. Each housing is permanently labelled with a laser marking so that each product can be quickly designated and positioned.

Weidmüller RockStar® IP 65 / NEMA Type 4X housings - your first choice for industrial housings with IP 65 protection.

**General ordering data**

Type	HDC 32A TOBU 1PG29G	Version
Order No.	<a href="#">1665810000</a>	HDC enclosures, Size: 7, Protection degree: IP65 (in plugged condition), Cable entry from top, Plug housing, Side-locking clamp on lower side, Standard, Size of cable entries: PG 29
GTIN (EAN)	4008190422837	
Qty.	1 pc(s).	
Type	HDC 32A TOBU 1PG21G	Version
Order No.	<a href="#">1665790000</a>	HDC enclosures, Size: 7, Protection degree: IP65 (in plugged condition), Cable entry from top, Plug housing, Side-locking clamp on lower side, Standard, Size of cable entries: PG 21
GTIN (EAN)	4008190422813	
Qty.	1 pc(s).	
Type	HDC 32A TOBU 1M32G	Version
Order No.	<a href="#">1787990000</a>	HDC enclosures, Size: 7, Protection degree: IP65 (in plugged condition), Cable entry from top, Plug housing, Side-locking clamp on lower side, Standard, Size of cable entries: M 32
GTIN (EAN)	4032248205431	
Qty.	1 pc(s).	

## HDC 32A SBU 2PG21G

Weidmüller Interface GmbH &amp; Co. KG

Klingenbergstraße 26

D-32758 Detmold

Germany

www.weidmueller.com

## Accessories

## Cover



The special die-cast alloy and the multi-layered surface sealing provide complete protection for the HDC housings.

The cleverly designed interlock system is manufactured from stainless steel. This guarantees a long lifespan with high resistance to corrosion and impact.

The housing interlock system provides integrated safety. Our unique, patented spring system provides the housing interlock with a secure grip and prevents accidental opening.

The laser marking allows for easy and quick identification. Each housing is permanently labelled with a laser marking so that each product can be quickly designated and positioned.

Weidmüller RockStar® IP 65 / NEMA Type 4X housings - your first choice for industrial housings with IP 65 protection.

## General ordering data

Type	HDC 32A DODQ 4B0	Version
Order No.	<a href="#">1665920000</a>	HDC enclosures, Size: 7, Protection degree: IP65 (in plugged condition), Cover for lower part of housing, Side-locking clamp on lower side, Standard
GTIN (EAN)	4008190422950	
Qty.	1 pc(s).	

## Hood, Cable Entry sideways



The special die-cast alloy and the multi-layered surface sealing provide complete protection for the HDC housings.

The cleverly designed interlock system is manufactured from stainless steel. This guarantees a long lifespan with high resistance to corrosion and impact.

The housing interlock system provides integrated safety. Our unique, patented spring system provides the housing interlock with a secure grip and prevents accidental opening.

The laser marking allows for easy and quick identification. Each housing is permanently labelled with a laser marking so that each product can be quickly designated and positioned.

Weidmüller RockStar® IP 65 / NEMA Type 4X housings - your first choice for industrial housings with IP 65 protection.

## General ordering data

Type	HDC 32A TSBQ 1M32G	Version
Order No.	<a href="#">1787950000</a>	HDC enclosures, Size: 7, Protection degree: IP65 (in plugged condition), Cable entry from side, Plug housing, Side-locking clamp on lower side, Standard, Size of cable entries: M 32
GTIN (EAN)	4032248205394	
Qty.	1 pc(s).	
Type	HDC 32A TSBQ 1PG29G	Version
Order No.	<a href="#">1665690000</a>	HDC enclosures, Size: 7, Protection degree: IP65 (in plugged condition), Cable entry from side, Plug housing, Side-locking clamp on lower side, Standard, Size of cable entries: PG 29
GTIN (EAN)	4008190422714	
Qty.	1 pc(s).	

**HDC 32A SBU 2PG21G****Weidmüller Interface GmbH & Co. KG**

Klingenbergstraße 26

D-32758 Detmold

Germany

[www.weidmueller.com](http://www.weidmueller.com)**Accessories**

Type	HDC 32A TSB 1M25G	Version
Order No.	<a href="#">1787960000</a>	HDC enclosures, Size: 7, Protection degree: IP65 (in plugged
GTIN (EAN)	4032248205400	condition), Cable entry from side, Plug housing, Side-locking clamp on
Qty.	1 pc(s).	lower side, Standard, Size of cable entries: M 25
Type	HDC 32A TSB 1PG21G	Version
Order No.	<a href="#">1665670000</a>	HDC enclosures, Size: 7, Protection degree: IP65 (in plugged
GTIN (EAN)	4008190422691	condition), Cable entry from side, Plug housing, Side-locking clamp on
Qty.	1 pc(s).	lower side, Standard, Size of cable entries: PG 21