

**HDC 10A ALU****Weidmüller Interface GmbH & Co. KG**

Klingenbergstraße 26

D-32758 Detmold

Germany

[www.weidmueller.com](http://www.weidmueller.com)**IP65**

The special die-cast alloy and the multi-layered surface sealing provide complete protection for the HDC housings.

The cleverly designed interlock system is manufactured from stainless steel. This guarantees a long lifespan with high resistance to corrosion and impact.

The housing interlock system provides integrated safety. Our unique, patented spring system provides the housing interlock with a secure grip and prevents accidental opening.

The laser marking allows for easy and quick identification. Each housing is permanently labelled with a laser marking so that each product can be quickly designated and positioned.

Weidmüller RockStar® IP 65 / NEMA Type 4X housings - your first choice for industrial housings with IP 65 protection.

**General ordering data**

Version	HDC enclosures, Size: 2, Protection degree: IP65 (in plugged condition), Bulkhead housing, End-locking clamp, lower side, Standard
Order No.	<a href="#">1664040000</a>
Type	HDC 10A ALU
GTIN (EAN)	4008190420734
Qty.	1 pc(s).

## HDC 10A ALU

Weidmüller Interface GmbH &amp; Co. KG

Klingenbergstraße 26

D-32758 Detmold

Germany

www.weidmueller.com

## Technical data

## Dimensions and weights

Depth	84 mm	Depth (inches)	3.307 inch
Height	26 mm	Height (inches)	1.024 inch
Width	54 mm	Width (inches)	2.126 inch
Mounting dimension - height	18 mm	Mounting dimension - width	70 mm
Net weight	87 g		

## Temperatures

Limit temperature	-40 °C ... 125 °C
-------------------	-------------------

## Dimensions

Height of base B1	5 mm	Height of housing B	26 mm
Hole pitch length A2	70 mm	Total length housing	63 mm
Width base C1	32 mm	Width housing C	30 mm

## General data

EMC housings	No	Housing main material	diecast aluminium
Material of locking element	Stainless steel, rust-proof	Protection degree	IP65 (in plugged condition)
Surface finish	Powder coating	Tightening torque	0.5 Nm

## Version

BG	2	Clamp version	End-locking clamp
Colour (RAL)	RAL 7035	Cover	without cover
Design	Standard	Design of housing	Bulkhead housing
Design of locking system	End-locking clamp, lower side	Sealing	NBR
Size	2	Suitable for ModuPlug®	No
Tightening torque	0.5 Nm	Top part/bottom part/lid	lower part
Type	Bulkhead (feed-through)		

## Classifications

ETIM 6.0	EC000437	ETIM 7.0	EC000437
ETIM 8.0	EC000437	ETIM 9.0	EC000437
ECLASS 9.0	27-44-02-02	ECLASS 9.1	27-44-02-02
ECLASS 10.0	27-44-02-02	ECLASS 11.0	27-44-02-02
ECLASS 12.0	27-44-02-02	ECLASS 13.0	27-44-02-02
ECLASS 14.0	27-44-02-02		

Substance	Acetone
Chemical resistance	Conditionally resistant
Substance	Drilling oil
Chemical resistance	Resistant
Substance	Diesel
Chemical resistance	Resistant
Substance	Ethyl alcohol
Chemical resistance	Resistant

## HDC 10A ALU

Weidmüller Interface GmbH &amp; Co. KG

Klingenbergstraße 26

D-32758 Detmold

Germany

www.weidmueller.com

## Technical data

Substance	Transmission oil
Chemical resistance	Resistant
Substance	Hydraulic oil
Chemical resistance	Resistant
Substance	Coolant
Chemical resistance	Resistant
Substance	Petroleum benzine
Chemical resistance	Resistant
Substance	Sweat
Chemical resistance	Resistant
Substance	Premium gasoline
Chemical resistance	Conditionally resistant
Substance	Water
Chemical resistance	Resistant
Substance	UV
Chemical resistance	Unstable
Substance	Ozone
Chemical resistance	Unstable

## Environmental Product Compliance

REACH SVHC	Lead 7439-92-1 Potassium perfluorobutane sulfonate 29420-49-3
SCIP	e98b2b24-ba23-41bf-8d19-0dda3647412f
Chemical resistance	de.myview.objectmodel.impl.BlockImpl@5b7b924d de.myview.objectmodel.impl.BlockImpl@2ae83a89 de.myview.objectmodel.impl.BlockImpl@70efe60d de.myview.objectmodel.impl.BlockImpl@26bd8005 de.myview.objectmodel.impl.BlockImpl@21d39765 de.myview.objectmodel.impl.BlockImpl@4a84cda4 de.myview.objectmodel.impl.BlockImpl@45d48577 de.myview.objectmodel.impl.BlockImpl@fa39860 de.myview.objectmodel.impl.BlockImpl@32f65e4e de.myview.objectmodel.impl.BlockImpl@5ef34c59 de.myview.objectmodel.impl.BlockImpl@3fed85cd de.myview.objectmodel.impl.BlockImpl@2c1e6ac8 de.myview.objectmodel.impl.BlockImpl@2c1a452b
RoHS Compliance Status	Compliant with exemption
RoHS Exemption (if applicable/known)	6bl

## Important note

Product information	When mounting the housings, make sure that the flat gasket is correctly seated.
---------------------	---

## Approvals

Approvals



ROHS	Conform
UL File Number Search	UL Website
Certificate No. (cURus)	E92202

## HDC 10A ALU

**Weidmüller Interface GmbH & Co. KG**  
Klingenbergstraße 26  
D-32758 Detmold  
Germany

[www.weidmueller.com](http://www.weidmueller.com)

## Technical data

### Downloads

Approval/Certificate/Document of Con-  
formity

[Manufacturer's declaration](#)

Engineering Data

[CAD data – STEP](#)

Product Change Notification

[20220214 Technical change to HDC housings](#)  
[20220214 Technische Änderung bei HDC-Gehäusen](#)

Technical Documentation

[1664040000 HDC 10A ALU STP Blatt 1.pdf](#)

Catalogues

[Catalogues in PDF-format](#)

Brochures

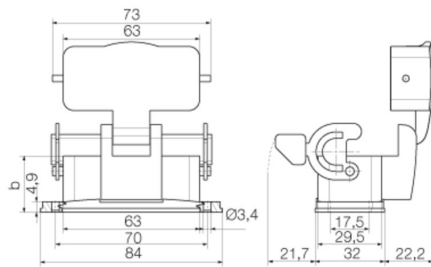
[FL FIELDWIRING EN](#)  
[FL FIELDWIRING EN](#)

## HDC 10A ALU

**Weidmüller Interface GmbH & Co. KG**  
Klingenbergstraße 26  
D-32758 Detmold  
Germany

[www.weidmueller.com](http://www.weidmueller.com)

## Drawings



**HDC 10A ALU****Weidmüller Interface GmbH & Co. KG**

Klingenbergstraße 26

D-32758 Detmold

Germany

[www.weidmueller.com](http://www.weidmueller.com)**Accessories****Cover**

The special die-cast alloy and the multi-layered surface sealing provide complete protection for the HDC housings.

The cleverly designed interlock system is manufactured from stainless steel. This guarantees a long lifespan with high resistance to corrosion and impact.

The housing interlock system provides integrated safety. Our unique, patented spring system provides the housing interlock with a secure grip and prevents accidental opening.

The laser marking allows for easy and quick identification. Each housing is permanently labelled with a laser marking so that each product can be quickly designated and positioned.

Weidmüller RockStar® IP 65 / NEMA Type 4X housings - your first choice for industrial housings with IP 65 protection.

**General ordering data**

Type	HDC 10A DMDL 2BO	Version
Order No.	<a href="#">1665880000</a>	HDC enclosures, Size: 2, Protection degree: IP65 (in plugged condition), Cover for lower part of housing, End-locking clamp, lower side, Standard
GTIN (EAN)	4008190422912	
Qty.	1 pc(s).	