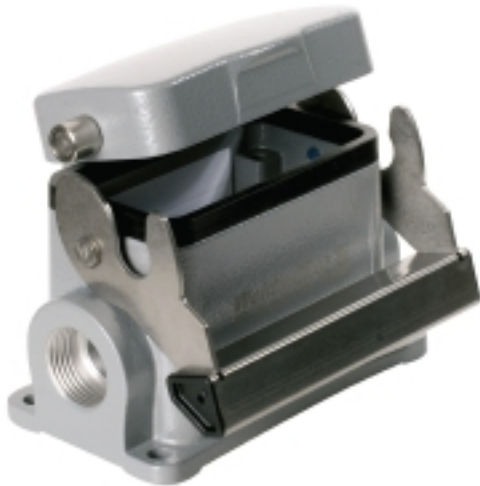


HDC 10B SDLU 2PG16G**Weidmüller Interface GmbH & Co. KG**

Klingenbergstraße 26

D-32758 Detmold

Germany

www.weidmueller.com**IP65**

The special die-cast alloy and the multi-layered surface sealing provide complete protection for the HDC housings.

The cleverly designed interlock system is manufactured from stainless steel. This guarantees a long lifespan with high resistance to corrosion and impact.

The housing interlock system provides integrated safety. Our unique, patented spring system provides the housing interlock with a secure grip and prevents accidental opening.

The laser marking allows for easy and quick identification. Each housing is permanently labelled with a laser marking so that each product can be quickly designated and positioned.

Weidmüller RockStar® IP 65 / NEMA Type 4X housings - your first choice for industrial housings with IP 65 protection.

General ordering data

Version	HDC enclosures, Size: 4, Protection degree: IP65 (in plugged condition), Base housing, End-locking clamp, lower side, Standard, with cover, Size of cable entries: PG 16
Order No.	1655680000
Type	HDC 10B SDLU 2PG16G
GTIN (EAN)	4008190408701
Qty.	1 pc(s).

HDC 10B SDLU 2PG16G**Weidmüller Interface GmbH & Co. KG**

Klingenbergstraße 26

D-32758 Detmold

Germany

www.weidmueller.com

Technical data**Dimensions and weights**

Height	79.5 mm	Height (inches)	3.13 inch
Width	98.9 mm	Width (inches)	3.894 inch
Mounting dimension - height	40 mm	Mounting dimension - width	82 mm
Net weight	347 g		

Temperatures

Limit temperature	-40 °C ... 125 °C
-------------------	-------------------

Dimensions

Cable entry	w. thread	Height of base B1	5 mm
Height of housing B	57 mm	Hole pitch length A2	82 mm
Total length housing	73 mm	Width base C1	53.5 mm
Width housing C	43 mm		

General data

EMC housings	No	Housing main material	diecast aluminium
Material of locking element	Stainless steel, rust-proof	Protection class note	Protection class with secured cover: IP 65
Protection degree	IP65 (in plugged condition)	Surface finish	Powder coating

Version

BG	4	Cable entry	w. thread
Clamp version	End-locking clamp	Colour (RAL)	RAL 7035
Cover	with cover	Design	Standard
Design of cover	with cover	Design of housing	Base housing
Design of locking system	End-locking clamp, lower side	Internal thread	PG 16
Number of cable entry on top	0	Number of cable entry sideways	2
Sealing	NBR	Size	4
Size of cable entries	PG 16	Suitable for ModuPlug®	No
Top part/bottom part/lid	lower part	Type	Base housing

Classifications

ETIM 6.0	EC000437	ETIM 7.0	EC000437
ETIM 8.0	EC000437	ETIM 9.0	EC000437
ECLASS 9.0	27-44-02-02	ECLASS 9.1	27-44-02-02
ECLASS 10.0	27-44-02-02	ECLASS 11.0	27-44-02-02
ECLASS 12.0	27-44-02-02	ECLASS 13.0	27-44-02-02
ECLASS 14.0	27-44-02-02		

Substance	Acetone
Chemical resistance	Conditionally resistant
Substance	Drilling oil
Chemical resistance	Resistant
Substance	Diesel
Chemical resistance	Resistant

HDC 10B SDLU 2PG16G**Weidmüller Interface GmbH & Co. KG**

Klingenbergstraße 26

D-32758 Detmold

Germany

www.weidmueller.com**Technical data**

Substance	Ethyl alcohol
Chemical resistance	Resistant
Substance	Transmission oil
Chemical resistance	Resistant
Substance	Hydraulic oil
Chemical resistance	Resistant
Substance	Coolant
Chemical resistance	Resistant
Substance	Petroleum benzine
Chemical resistance	Resistant
Substance	Sweat
Chemical resistance	Resistant
Substance	Premium gasoline
Chemical resistance	Conditionally resistant
Substance	Water
Chemical resistance	Resistant
Substance	UV
Chemical resistance	Unstable
Substance	Ozone
Chemical resistance	Unstable

Environmental Product Compliance

REACH SVHC	Lead 7439-92-1 Potassium perfluorobutane sulfonate 29420-49-3
SCIP	e98b2b24-ba23-41bf-8d19-0dda3647412f
Chemical resistance	de.myview.objectmodel.impl.BlockImpl@11a56cd9 de.myview.objectmodel.impl.BlockImpl@7d098f20 de.myview.objectmodel.impl.BlockImpl@275e569f de.myview.objectmodel.impl.BlockImpl@7fc5120b de.myview.objectmodel.impl.BlockImpl@453c6a8e de.myview.objectmodel.impl.BlockImpl@74fd8d86 de.myview.objectmodel.impl.BlockImpl@2142c728 de.myview.objectmodel.impl.BlockImpl@76c0dc41 de.myview.objectmodel.impl.BlockImpl@508eb00d de.myview.objectmodel.impl.BlockImpl@48878627 de.myview.objectmodel.impl.BlockImpl@7fcb7398 de.myview.objectmodel.impl.BlockImpl@f198af4 de.myview.objectmodel.impl.BlockImpl@2ab24dc2
RoHS Compliance Status	Compliant with exemption
RoHS Exemption (if applicable/known)	6bl

Approvals

Approvals



ROHS	Conform
UL File Number Search	UL Website
Certificate No. (cURus)	E92202

HDC 10B SDLU 2PG16G

Weidmüller Interface GmbH & Co. KG

Klingenbergstraße 26

D-32758 Detmold

Germany

www.weidmueller.com

Technical data

Downloads

Approval/Certificate/Document of Con-
formity

[Manufacturer's declaration](#)

Engineering Data

[CAD data – STEP](#)

Product Change Notification

[20220214 Technical change to HDC housings](#)

[20220214 Technische Änderung bei HDC-Gehäusen](#)

Technical Documentation

[1655680000 HDC 10B SDLU 2PG16G STP Blatt 1.pdf](#)

Catalogues

[Catalogues in PDF-format](#)

Brochures

[FL FIELDWIRING EN](#)

[FL FIELDWIRING EN](#)

HDC 10B SDLU 2PG16G

Weidmüller Interface GmbH & Co. KG
Klingenbergstraße 26
D-32758 Detmold
Germany

www.weidmueller.com

Drawings

