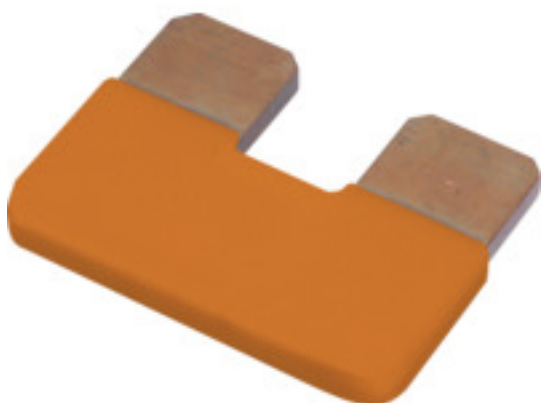


WQB WPD X06/2**Weidmüller Interface GmbH & Co. KG**

Klingenbergstraße 26

D-32758 Detmold

Germany

www.weidmueller.com**General ordering data**

Version	Cross-connector (terminal), Plugged, Number of poles: 2, Pitch in mm (P): 39.50, Insulated: Yes, 215 A, grey
Order No.	1561940000
Type	WQB WPD X06/2
GTIN (EAN)	4050118367126
Qty.	3 pc(s).

WQB WPD X06/2**Weidmüller Interface GmbH & Co. KG**

Klingenbergstraße 26

D-32758 Detmold

Germany

www.weidmueller.com**Technical data****Dimensions and weights**

Net weight	5.5 g
------------	-------

Temperatures

Storage temperature	-25 °C...55 °C
---------------------	----------------

Material data

Colour	grey
--------	------

System specifications

Version	Cross-connector
---------	-----------------

Additional technical data

Explosion-tested version	No	Type of fixing	Plugged
--------------------------	----	----------------	---------

Dimensions

Pitch in mm (P)	39.5 mm
-----------------	---------

General

Number of poles	2
-----------------	---

Rating data

Rated voltage	400 V	Rated current	215 A
---------------	-------	---------------	-------

Classifications

ETIM 6.0	EC000489	ETIM 7.0	EC000489
ETIM 8.0	EC000489	ETIM 9.0	EC000489
ECLASS 9.0	27-14-11-40	ECLASS 9.1	27-14-11-40
ECLASS 10.0	27-14-11-40	ECLASS 11.0	27-14-11-40
ECLASS 12.0	27-14-11-40	ECLASS 13.0	27-25-03-03

Environmental Product Compliance

REACH SVHC	/
------------	---

Approvals

ROHS	Conform
------	---------

Downloads

Engineering Data	CAD data – STEP
Catalogues	Catalogues in PDF-format