

KP-M20/-240**Weidmüller Interface GmbH & Co. KG**

Klingenbergstraße 26

D-32758 Detmold

Germany

www.weidmueller.com

The use of insulated connectors guarantees users consistent electrical connection quality in the long term.

- Wide range of insulated and non-insulated cable lugs and connectors
- Tubular cable lugs according to current market standards (Euroseries)
- Compression cable lugs acc. to DIN 46235
- Sheet metal cable lugs acc. to DIN 46234
- Insulated ring cable lugs to DIN 46237
- Insulated pin cable lugs to DIN 46231

General ordering data

Version	cable lug, terminal end, 240 mm ²
Order No.	1498430000
Type	KP-M20/-240
GTIN (EAN)	4050118307832
Qty.	20 pc(s).

KP-M20/-240**Weidmüller Interface GmbH & Co. KG**

Klingenbergstraße 26

D-32758 Detmold

Germany

www.weidmueller.com**Technical data****Dimensions and weights**

Net weight	276 g
------------	-------

Technical data

Version	DIN series 46235, standard
---------	----------------------------

Connectors

Conductor cross-section	240 mm ²	Connection length (l)	92 mm
Flange width (b)	45 mm	Hole	M 20
Identification number Cu	28 K	Inside diameter of flange (d2)	21 mm
Inside diameter of shaft (d1)	21.5 mm	Insulation	not available
Outside diameter of shaft (d3)	29 mm	Shaft length (a)	40 mm

Classifications

ETIM 6.0	EC001050	ETIM 7.0	EC001050
ETIM 8.0	EC001050	ETIM 9.0	EC001050
ECLASS 9.0	27-40-02-03	ECLASS 9.1	27-40-02-03
ECLASS 10.0	27-40-02-03	ECLASS 11.0	27-40-02-03
ECLASS 12.0	27-40-02-03	ECLASS 13.0	27-40-02-03

Environmental Product Compliance

REACH SVHC	/
------------	---

Approvals

ROHS	Conform
------	---------

Downloads

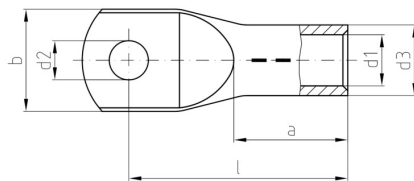
Catalogues	Catalogues in PDF-format
Brochures	

KP-M20/-240

Weidmüller Interface GmbH & Co. KG
Klingenbergstraße 26
D-32758 Detmold
Germany

www.weidmueller.com

Drawings



KP-M20/-240

Weidmüller Interface GmbH & Co. KG

Klingenbergstraße 26

D-32758 Detmold

Germany

www.weidmueller.com

Accessories

... for tubular cable lugs (acc. to EN 13600)



Crimping tools for cable lugs, connectors and wire-end ferrules with interchangeable inserts

- extremely fast processing thanks to hydraulic support
- large processing range up to 400 mm²
- 360° revolving quick action crimping head
- automatic pressure limitation and monitoring via pressure sensor
- Additional features for APG series:
- electronic control and monitoring of the crimping process
- Saving of all crimping cycles and error messages to internal memory
- Reading of all cycles and error messages via USB

General ordering data

Type	ES APG 80 WM 240	Version
Order No.	1502580000	240mm ² , WM crimp
GTIN (EAN)	4050118310689	
Qty.	1 pc(s).	

... for compression cable lugs (acc. to DIN 46235)



Crimping tools for cable lugs, connectors and wire-end ferrules with interchangeable inserts

- extremely fast processing thanks to hydraulic support
- large processing range up to 400 mm²
- 360° revolving quick action crimping head
- automatic pressure limitation and monitoring via pressure sensor
- Additional features for APG series:
- electronic control and monitoring of the crimping process
- Saving of all crimping cycles and error messages to internal memory
- Reading of all cycles and error messages via USB

General ordering data

Type	ES APG 80 HEX 240	Version
Order No.	1502740000	Hexagonal crimp
GTIN (EAN)	4050118310481	
Qty.	1 pc(s).	

KP-M20/-240

Weidmüller Interface GmbH & Co. KG

Klingenbergstraße 26

D-32758 Detmold

Germany

www.weidmueller.com

Accessories

Tools



Crimping tools for cable lugs, connectors and wire-end ferrules with interchangeable inserts

- extremely fast processing thanks to hydraulic support
- large processing range up to 300 mm²
- 270° revolving quick-action crimping head
- automatic pressure limitation and monitoring via pressure sensor
- electronic control and monitoring of the crimping process
- Saving of all crimping cycles and error messages to internal memory
- Reading of all cycles and error messages via USB
- Li-ion rechargeable battery with charge status indicator: 18 V, 2 Ah

General ordering data

Type	EPG 60	Version
Order No.	2453810000	Pressing tools, Tools, Pressing tool, 6mm ² , 300mm ² , Hexagonal crimp,
GTIN (EAN)	4050118468434	WM crimp, Indent crimp, Trapezoidal crimp, Oval crimping
Qty.	1 pc(s).	

... for tubular cable lugs



Crimping tools for cable lugs, connectors and wire-end ferrules with interchangeable inserts

- extremely fast processing thanks to hydraulic support
- large processing range up to 300 mm²
- 270° revolving quick-action crimping head
- automatic pressure limitation and monitoring via pressure sensor
- electronic control and monitoring of the crimping process
- Saving of all crimping cycles and error messages to internal memory
- Reading of all cycles and error messages via USB
- Li-ion rechargeable battery with charge status indicator: 18 V, 2 Ah

General ordering data

Type	ES EPG/HPG 60 WM 240	Version
Order No.	2469640000	Crimping tool insert, WM crimp
GTIN (EAN)	4050118484052	
Qty.	1 pc(s).	

KP-M20/-240

Weidmüller Interface GmbH & Co. KG
Klingenbergstraße 26
D-32758 Detmold
Germany

www.weidmueller.com

Accessories

... for compression cable lugs



Crimping tools for cable lugs, connectors and wire-end ferrules with interchangeable inserts

- extremely fast processing thanks to hydraulic support
- large processing range up to 300 mm²
- 270° revolving quick-action crimping head
- automatic pressure limitation and monitoring via pressure sensor
- electronic control and monitoring of the crimping process
- Saving of all crimping cycles and error messages to internal memory
- Reading of all cycles and error messages via USB
- Li-ion rechargeable battery with charge status indicator: 18 V, 2 Ah

General ordering data

Type	ES EPG/HPG 60 HEX 240	Version
Order No.	2505260000	Crimping tool insert, Hexagonal crimp
GTIN (EAN)	4050118519648	
Qty.	1 pc(s).	

Tools



Crimping tools for cable lugs, connectors and wire-end ferrules with interchangeable inserts

- extremely fast processing thanks to hydraulic support
- large processing range up to 400 mm²
- 360° revolving quick action crimping head
- automatic pressure limitation and monitoring via pressure sensor
- Additional features for APG series:
- electronic control and monitoring of the crimping process
- Saving of all crimping cycles and error messages to internal memory
- Reading of all cycles and error messages via USB

General ordering data

Type	HPG 60	Version
Order No.	2453820000	6mm ² , 300mm ² , Hexagonal crimp, WM crimp, Indent crimp,
GTIN (EAN)	4050118468427	Trapezoidal crimp, Oval crimping
Qty.	1 pc(s).	
Type	APG 80	Version
Order No.	1502390000	6mm ² , 400mm ²
GTIN (EAN)	4050118310627	
Qty.	1 pc(s).	