

**KSN/-2,5****Weidmüller Interface GmbH & Co. KG**

Klingenbergstraße 26

D-32758 Detmold

Germany

[www.weidmueller.com](http://www.weidmueller.com)

**The use of insulated connectors guarantees users consistent electrical connection quality in the long term.**

- Wide range of insulated and non-insulated cable lugs and connectors
- Tubular cable lugs according to current market standards (Euroseries)
- Compression cable lugs acc. to DIN 46235
- Sheet metal cable lugs acc. to DIN 46234
- Insulated ring cable lugs to DIN 46237
- Insulated pin cable lugs to DIN 46231

**General ordering data**

|            |  |
|------------|--|
| Version    | cable lug, terminal end, 1.5 mm <sup>2</sup> - 2.5 mm <sup>2</sup> |
| Order No.  | <a href="#">1492750000</a>   |
| Type       | KSN/-2,5   |
| GTIN (EAN) | 4050118302707  |
| Qty.       | 100 pc(s).   |

**KSN/-2,5****Weidmüller Interface GmbH & Co. KG**

Klingenbergstraße 26

D-32758 Detmold

Germany

[www.weidmueller.com](http://www.weidmueller.com)**Technical data****Dimensions and weights**

|            |        |
|------------|--------|
| Net weight | 0.85 g |
|------------|--------|

**Connectors**

|                               |                     |                               |                     |
|-------------------------------|---------------------|-------------------------------|---------------------|
| Conductor cross-section, max. | 2.5 mm <sup>2</sup> | Conductor cross-section, min. | 1.5 mm <sup>2</sup> |
| Dimensions pin/plug           | 1,9 mm              | Inside diameter of shaft (d1) | 2.3 mm              |
| Insulation                    | not available       | Length 1 (l1)                 | 22 mm               |
| Length 2 (l2)                 | 15 mm               | Shaft length (a)              | 5 mm                |

**Classifications**

|             |             |             |             |
|-------------|-------------|-------------|-------------|
| ETIM 6.0    | EC001059    | ETIM 7.0    | EC001059    |
| ETIM 8.0    | EC001059    | ETIM 9.0    | EC001059    |
| ECLASS 9.0  | 27-40-02-92 | ECLASS 9.1  | 27-40-02-12 |
| ECLASS 10.0 | 27-40-02-92 | ECLASS 11.0 | 27-40-02-92 |
| ECLASS 12.0 | 27-40-02-92 | ECLASS 13.0 | 27-40-02-92 |
| ECLASS 14.0 | 27-40-02-92 |             |             |

**Environmental Product Compliance**

|                        |                             |
|------------------------|-----------------------------|
| REACH SVHC             | /                           |
| RoHS Compliance Status | Compliant without exemption |

**Approvals**

|      |         |
|------|---------|
| ROHS | Conform |
|------|---------|

**Downloads**

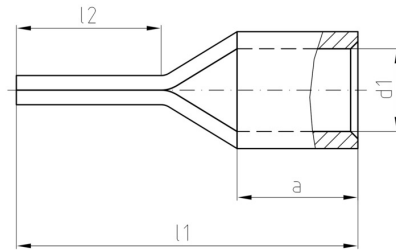
|            |  |
|------------|--|
| Catalogues | <a href="#">Catalogues in PDF-format</a> |
| Brochures  |  |

**KSN/-2,5**

**Weidmüller Interface GmbH & Co. KG**  
Klingenbergstraße 26  
D-32758 Detmold  
Germany

[www.weidmueller.com](http://www.weidmueller.com)

## Drawings



**KSN/-2,5****Weidmüller Interface GmbH & Co. KG**

Klingenbergstraße 26

D-32758 Detmold

Germany

[www.weidmueller.com](http://www.weidmueller.com)**Accessories****Crimping tools****Crimping tools for non-insulated connectors**

Rolled cable lugs, tubular cable lugs, terminal pins, parallel and serial connectors

- Ratchet guarantees precise crimping
- Release option in the event of incorrect operation

**General ordering data**

|            |                            |   |
|------------|----------------------------|---|
| Type       | HTN 21                     | Version   |
| Order No.  | <a href="#">9014610000</a> | Pressing tool, Crimping tool for contacts, 0.5mm <sup>2</sup> , 6mm <sup>2</sup> , Indent crimp |
| GTIN (EAN) | 4008190152734              |   |
| Qty.       | 1 pc(s).                   |   |