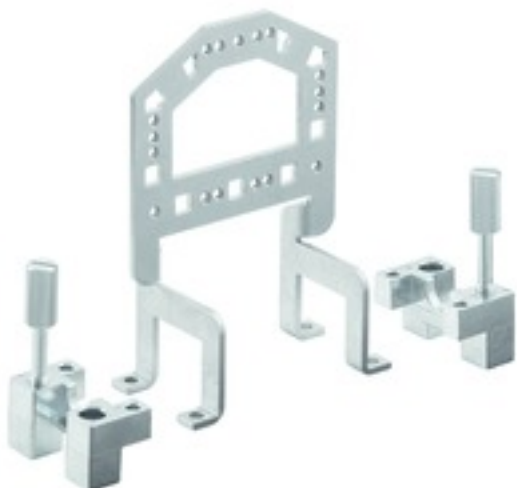


HDC GRIP PANEL 4 ADAPT**Weidmüller Interface GmbH & Co. KG**

Klingenbergstraße 26

D-32758 Detmold

Germany

www.weidmueller.com**General ordering data**

| | |
|------------|--|
| Version | Heavy-duty connectors, Accessories, Grip panel |
| Order No. | 1444710000 |
| Type | HDC GRIP PANEL 4 ADAPT |
| GTIN (EAN) | 4050118250145 |
| Qty. | 1 pc(s). |

HDC GRIP PANEL 4 ADAPT**Weidmüller Interface GmbH & Co. KG**

Klingenbergstraße 26

D-32758 Detmold

Germany

www.weidmueller.com**Technical data****Dimensions and weights**

| | |
|------------|----------|
| Net weight | 124.69 g |
|------------|----------|

Temperatures

| | | | |
|----------------------------------|--------|----------------------------------|--------|
| Continuous operating temp., min. | -40 °C | Continuous operating temp., max. | 125 °C |
|----------------------------------|--------|----------------------------------|--------|

Version

| | | | |
|------------------------|-------------------|------|---|
| Material | Steel, galvanised | Size | 4 |
| Suitable for ModuPlug® | No | | |

Classifications

| | | | |
|-------------|-------------|-------------|-------------|
| ETIM 6.0 | EC002943 | ETIM 7.0 | EC002943 |
| ETIM 8.0 | EC002943 | ETIM 9.0 | EC002943 |
| ECLASS 9.0 | 27-44-02-92 | ECLASS 9.1 | 27-44-01-92 |
| ECLASS 10.0 | 27-44-02-92 | ECLASS 11.0 | 27-44-02-92 |
| ECLASS 12.0 | 27-44-02-92 | ECLASS 13.0 | 27-44-02-92 |

Environmental Product Compliance

| | |
|------------|---|
| REACH SVHC | / |
|------------|---|

Approvals

| | |
|------|---------|
| ROHS | Conform |
|------|---------|

Downloads

| | |
|------------------|--|
| Engineering Data | CAD data – STEP |
| Catalogues | Catalogues in PDF-format |
| Brochures | FL FIELDWIRING EN FL FIELDWIRING EN |