

**SFX-M 11/60-5 AL****Weidmüller Interface GmbH & Co. KG**

Klingenbergstraße 26

D-32758 Detmold

Germany

[www.weidmueller.com](http://www.weidmueller.com)

MetalliCards are available in aluminium or stainless steel to meet a wide range of labelling requirements. The chrome-coated aluminium tags are the inexpensive alternative for a variety of applications, and in particular, they prove themselves through the deep contrasts of their multi-colour print.

In the technologically demanding chemical and process industries, you are on the safe side when using the stainless steel MetalliCard with its outstanding resistance characteristics. Its formats cover the needs of the entire system-identification spectrum. Whether small equipment or type plates, they ensure high-quality marking processes. The MetalliCard also offers optimum installation characteristics. MetalliCards can be used universally thanks to various fixation options: bonding, riveting, with tag holders or rails, or in combination with stainless steel cable ties.

A special punching in the SFX-M allows the use of steel cable ties.

**For custom printing:** Please send us a file of our labeling software M-Print PRO or M-Print PRO Online (without installation) for your labeling specifications.

**General ordering data**

Version	MetalliCard, Conductor and cable markers, 7 - 40 mm, 60 x 11 mm, silver
Order No.	<a href="#">1422560000</a>
Type	SFX-M 11/60-5 AL
GTIN (EAN)	4050118226140
Qty.	50 pc(s).

**SFX-M 11/60-5 AL****Weidmüller Interface GmbH & Co. KG**

Klingenbergstraße 26

D-32758 Detmold

Germany

www.weidmueller.com

**Technical data****Dimensions and weights**

Depth	0.8 mm	Depth (inches)	0.031 inch
Height	60 mm	Height (inches)	2.362 inch
Width	11 mm	Width (inches)	0.433 inch
Net weight	1.06 g		

**Temperatures**

Operating temperature range	-55...130 °C
-----------------------------	--------------

**General data**

Colour	silver	
Material	Anodized aluminium	
Number of markers per combination	1 MetalliCard = Conductor and cable markers	
Number of markers per packaging unit	Form of supply	MetalliCard
Operating temperature range	-55...130 °C	
Operating temperature range, max.	130 °C	
Operating temperature range, min.	-55 °C	
Recommended industries	Process, Energy	
Size of labelling field	11.2 x 45 mm	
Width	11 mm	

**Conductor and cable markers**

Cable tie passage	Flat	Conductor O.D.	7 - 40 mm
Conductor O.D., max.	40 mm	Conductor O.D., min.	7 mm
Conductor cross-section, max.	500 mm <sup>2</sup>	Conductor cross-section, min.	16 mm <sup>2</sup>
Cross-section for connected wire	16 - 500 mm <sup>2</sup>	Suitable cable tie	Plastic

**Classifications**

ETIM 6.0	EC001530	ETIM 7.0	EC001530
ETIM 8.0	EC001530	ETIM 9.0	EC001530
ECLASS 9.0	27-40-04-01	ECLASS 9.1	27-40-04-01
ECLASS 10.0	27-40-04-01	ECLASS 11.0	27-28-11-02
ECLASS 12.0	27-28-11-02	ECLASS 13.0	27-28-11-02

**Environmental Product Compliance**

REACH SVHC	/
------------	---

**Approvals**

ROHS	Conform
------	---------

**Downloads**

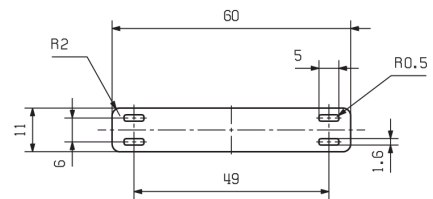
Engineering Data	<a href="#">CAD data – STEP</a>
Engineering Data	<a href="#">Zuken E3.S</a>
Catalogues	<a href="#">Catalogues in PDF-format</a>

## SFX-M 11/60-5 AL

**Weidmüller Interface GmbH & Co. KG**  
Klingenbergstraße 26  
D-32758 Detmold  
Germany

[www.weidmueller.com](http://www.weidmueller.com)

# Drawings



## SFX-M 11/60-5 AL

Weidmüller Interface GmbH &amp; Co. KG

Klingenbergstraße 26

D-32758 Detmold

Germany

www.weidmueller.com

## Accessories

## Inlay



MetalliCards are available in aluminium or stainless steel to meet a wide range of labelling requirements. The chrome-coated aluminium tags are the inexpensive alternative for a variety of applications, and in particular, they prove themselves through the deep contrasts of their multi-colour print.

In the technologically demanding chemical and process industries, you are on the safe side when using the stainless steel MetalliCard with its outstanding resistance characteristics. Its formats cover the needs of the entire system-identification spectrum. Whether small equipment or type plates, they ensure high-quality marking processes. The MetalliCard also offers optimum installation characteristics. MetalliCards can be used universally thanks to various fixation options: bonding, riveting, with tag holders or rails, or in combination with stainless steel cable ties.

A special punching in the SFX-M allows the use of steel cable ties.

**For custom printing:** Please send us a file of our labeling software M-Print PRO or M-Print PRO Online (without installation) for your labeling specifications.

## General ordering data

Type	INLAY SFX-M 11/60
Order No.	<a href="#">1341110000</a>
GTIN (EAN)	4050118145601
Qty.	1 pc(s).

## Complementary products



## General ordering data

Type	PRIMER CC-M
Order No.	<a href="#">2068020000</a>
GTIN (EAN)	4050118416534
Qty.	100 pc(s).

### SFX-M 11/60-5 AL

**Weidmüller Interface GmbH & Co. KG**

Klingenbergstraße 26

D-32758 Detmold

Germany

[www.weidmueller.com](http://www.weidmueller.com)

## Accessories

Type	INLAY CC-M UNIVERSAL
Order No.	<a href="#">1341120000</a>
GTIN (EAN)	4050118145458
Qty.	1 pc(s).