

PSSR 230VAC/1PH AC 25A**Weidmüller Interface GmbH & Co. KG**

Klingenbergstraße 26

D-32758 Detmold

Germany

www.weidmueller.com**Product image**

Similar to illustration

- Load circuit: 1-phase 12...275 V AC / 25 A or 24...510 V AC / 35 A
- Zero-cross switch or instantaneous-switching
- Ready-to-use: snap on - connect - ready
- Wear-free and silent switching
- High capacity for handling surge currents (I^2t) up to 6000 A²s (10 ms)
- Plug-in current-monitoring module

General ordering data

Version	Power Solid-State Relais, Solid state contactor, Rated control voltage: 160...240 V AC/DC , Rated switching voltage: 12...275 V AC, Continuous current: 17 A (AC51) at 40 °C, 3.5 A (AC 53)
Order No.	1406220000
Type	PSSR 230VAC/1PH AC 25A
GTIN (EAN)	4050118206838
Qty.	1 pc(s).

PSSR 230VAC/1PH AC 25A**Weidmüller Interface GmbH & Co. KG**

Klingenbergstraße 26

D-32758 Detmold

Germany

www.weidmueller.com

Technical data**Dimensions and weights**

Depth	115.9 mm	Depth (inches)	4.563 inch
Height	98 mm	Height (inches)	3.858 inch
Width	22.5 mm	Width (inches)	0.886 inch
Net weight	247 g		

Temperatures

Storage temperature	-55 °C...125 °C	Operating temperature	-55 °C...100 °C
Humidity	40...85 % (indoor) no condensation		

Rated data UL

Certificate No. (cURus)	E223474
-------------------------	---------

Control side

Rated control voltage	160...240 V AC/DC	Nominal control current	4.4...6.7 mA
Power rating	≤ 1.6 VA	Status indicator	LED yellow
Protective circuit	Rectifier	Input frequency	10 Hz

Load side

Rated switching voltage	12...275 V AC	Continuous current	17 A (AC 51) @ 40 °C; 3.5 A (AC 53)
Max. switching current	25 A	Load category	AC 51, AC 53
Inrush current	140 A (10 ms)	Pulse load, max. current	250 A (10 ms), non-recurrent
Load limit integral (I^2t) <10 ms	340 A²s	Switch-on delay	≤ 30 ms
Switch-off delay	≤ 30 ms	Voltage drop at max. load	≤ 1.25 V
Leakage current	≤ 1 mA	Min. switching current	5 mA
Short-circuit-proof	No	Protective circuit, load side	Varistor
Contact type	1 NO contact (Triac (zero-cross switch))	Output voltage frequency range	50...60 Hz
max. switching frequency (AC control voltage)	4 Hz	max. switching frequency (DC control voltage)	4 Hz

General data

Version	Single-phase with mounted heat sink (zero-voltage switch output)	Rail	TS 35
Colour	black		

Insulation coordination

Insulation coordination according to	EN 60947-4-3:2014	Pollution severity	2
Surge voltage category	III	Dielectric strength for control side - load side	4 kV _{eff}
Dielectric strength of load side - housing	4 kV _{eff}	Impulse withstand voltage	4 kV (1.2/50 µs)
Protection degree	IP20		

Further details of approvals / standards

Certificate No. (cURus)	E223474
-------------------------	---------

Creation date July 2, 2024 11:11:14 PM CEST

PSSR 230VAC/1PH AC 25A

Weidmüller Interface GmbH & Co. KG

Klingenbergstraße 26

D-32758 Detmold

Germany

www.weidmueller.com

Technical data

Connection data (control side)

Wire connection method (control side)	Screw connection	Nom. rated connection clamping range (control side)	1.5 mm ²
Min. rated connection clamping range (control side)	0.13 mm ²	Max. rated connection clamping range (control side)	3.3 mm ²
Min. tightening torque (control side)	0.4 Nm	Max. tightening torque (control side)	0.5 Nm
Blade size (control side)	0.6 x 3.5 mm		

Connection data (load side)

Wire connection method (load side)	Screw connection	Nom. rated connection clamping range (load side)	6 mm ²
Min. rated connection clamping range (load side)	1.5 mm ²	Max. rated connection clamping range (load side)	6 mm ²
Wire connection method (load side)	M5 ring cable lug (insulated)	Min. tightening torque (load side)	2 Nm
Max. tightening torque (load side)	3 Nm	Blade size (load side)	Gr. PZ2

Classifications

ETIM 6.0	EC002055	ETIM 7.0	EC002055
ETIM 8.0	EC002055	ETIM 9.0	EC002055
ECLASS 9.0	27-37-10-14	ECLASS 9.1	27-37-10-14
ECLASS 10.0	27-37-10-14	ECLASS 11.0	27-37-10-14
ECLASS 12.0	27-37-10-14	ECLASS 13.0	27-37-10-14

Environmental Product Compliance

REACH SVHC	Lead 7439-92-1
------------	----------------

Approvals

Approvals



ROHS	Conform
UL File Number Search	UL Website
Certificate No. (cURus)	E223474

Downloads

Approval/Certificate/Document of Conformity	EU Konformitätserklärung / EU Declaration of Conformity
Engineering Data	CAD data – STEP
User Documentation	Beipackzettel / Package Insert - multilingual
Catalogues	Catalogues in PDF-format
Brochures	

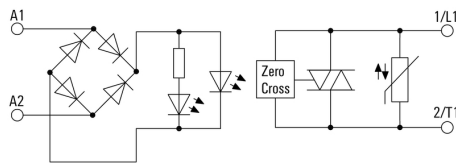
PSSR 230VAC/1PH AC 25A

Weidmüller Interface GmbH & Co. KG
 Klingenbergstraße 26
 D-32758 Detmold
 Germany

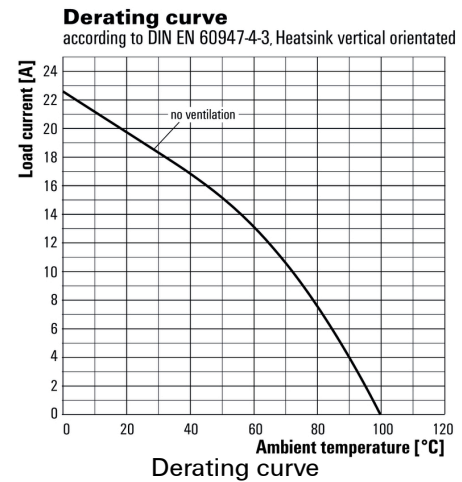
www.weidmueller.com

Drawings

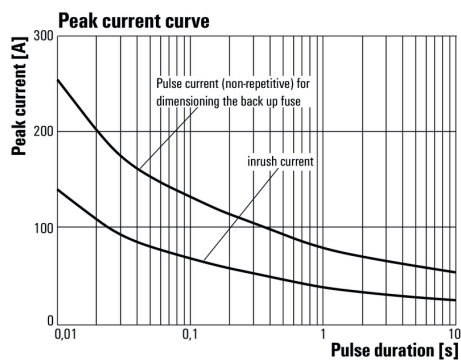
Wiring diagram



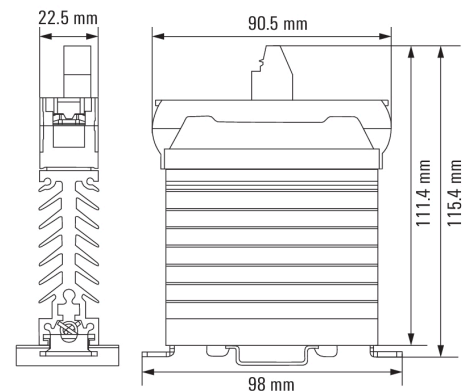
Graph



Graph



Dimensional drawing



PSSR 230VAC/1PH AC 25A**Weidmüller Interface GmbH & Co. KG**

Klingenbergstraße 26

D-32758 Detmold

Germany

www.weidmueller.com**Accessories****ESG 6/15****Guaranteed long service life: ESG**

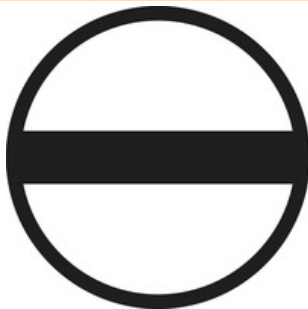
The multi-colour and multi-format labels have a strong adhesive layer to ensure the best possible adhesion to the underlying surface. Double laminated polyester makes the basic material very thin and yet extremely tear-resistant.

Your benefits with MultiMark

- "Different materials for various requirements"
- Can be used with equipment from many manufacturers
- Device markers with a familiar design

General ordering data

Type	ESG 6/15 MM WS	Version
Order No.	2619940000	ESG, Device markers, 6 x 15 mm, white
GTIN (EAN)	4050118626148	
Qty.	3,000 pc(s).	

Slotted screwdriver

VDE insulated slot-head screwdriver, SDI DIN 7437, ISO 2380/2, drive output acc. to DIN 5264, ISO 2380/1. SoftFinish grip

General ordering data

Type	SDIS 0.6X3.5X100	Version
Order No.	2749810000	Screwdriver, Blade width (B): 3.5 mm, Blade length: 100 mm, Blade
GTIN (EAN)	4050118897012	thickness (A): 0.6 mm
Qty.	1 pc(s).	

PSSR 230VAC/1PH AC 25A

Weidmüller Interface GmbH & Co. KG

Klingenbergstraße 26

D-32758 Detmold

Germany

www.weidmueller.com

Accessories

Slotted screwdriver



VDE insulated screwdriver sets, for working on live parts up to 1000 V AC and 1500 V DC, DIN EN 60900. IEC 900. Each piece is "GS" safety tested. Blade made from fully hardened, high-alloy chromium-vanadium-molybdenum steel, gun-metal finish.

General ordering data

Type	SDIS SLIM 0.6X3.5X100	Version
Order No.	2749610000	Mounting tool, Blade width (B): 3.5 mm, Blade length: 100 mm, Blade
GTIN (EAN)	4050118896350	thickness (A): 0.6 mm
Qty.	1 pc(s).	

Blank



ESG is the tried-and-tested marker in MultiCard format for use on many well-known electrical devices. The result is high-quality device marking with a high-contrast appearance.

Various types are available for devices from manufacturers like Siemens, ABB, Beckhoff etc.

Advantages at a glance:

- Tags for universal usage, self-adhesive or clip-on tags, depending on type
- For aligned equipment, e.g. circuit breakers, we supply ESG markers for clipping onto tag rails
- Individual laser-quality printing according to specifications

For custom printing: Please send us a file of our labeling software M-Print PRO or M-Print PRO Online (without installation) for your labeling specifications.

General ordering data

Type	ESG 6/15 RIDER MC NE WS	Version
Order No.	1881280000	ESG, Device markers x 15 mm, PA 66, Colour: white, pluggable
GTIN (EAN)	4032248482276	
Qty.	200 pc(s).	

PSSR 230VAC/1PH AC 25A**Weidmüller Interface GmbH & Co. KG**

Klingenbergstraße 26

D-32758 Detmold

Germany

www.weidmueller.com**Accessories****Crosshead screwdriver Pozidriv**

VDE insulated crosshead screwdriver type Pozidriv SDIK PZ DIN 7438, ISO 8764/2-PZ, output to ISO 8764-PZ, SoftFinish grip

General ordering data

Type	SDIK PZ2 X 100	Version
Order No.	2749930000	Screwdriver, Blade width (B): 2 mm, 100 mm, Blade thickness (A): 2
GTIN (EAN)	4050118897234	
Qty.	1 pc(s).	

SAK-Series

Weidmüller's range of products includes end brackets that guarantee a permanent, reliable mounting on the terminal rail and prevent sliding. Versions with and without screws are available. The end brackets include marking options, also for group markers, and also a test plug holder.

General ordering data

Type	MEW 35/1	Version
Order No.	1805610000	End bracket, metal, grey, Rail: TS 35, when screwed in
GTIN (EAN)	4032248287017	
Qty.	10 pc(s).	

PSSR 230VAC/1PH AC 25A

Weidmüller Interface GmbH & Co. KG

Klingenbergstraße 26

D-32758 Detmold

Germany

www.weidmueller.com

Accessories

ESG 6/17

**Guaranteed long service life: ESG**

The multi-colour and multi-format labels have a strong adhesive layer to ensure the best possible adhesion to the underlying surface. Double laminated polyester makes the basic material very thin and yet extremely tear-resistant.

Your benefits with MultiMark

- "Different materials for various requirements"
- Can be used with equipment from many manufacturers
- Device markers with a familiar design

General ordering data

Type	ESG 6/17 MM WS	Version
Order No.	2005100000	ESG, Device markers, 6 x 17 mm, white
GTIN (EAN)	4050118390728	
Qty.	3,000 pc(s).	

Crosshead screwdriver, Pozidrive

VDE insulated screwdriver sets, for working on live parts up to 1000 V AC and 1500 V DC, DIN EN 60900. IEC 900. Each piece is "GS" safety tested. Blade made from fully hardened, high-alloy chromium-vanadium-molybdenum steel, gun-metal finish.

General ordering data

Type	SDIK SLIM PZ2 X 100	Version
Order No.	2749680000	Screwdriver, Blade width (B): 2 mm, 100 mm, Blade thickness (A): 2
GTIN (EAN)	4050118896428	
Qty.	1 pc(s).	

PSSR 230VAC/1PH AC 25A**Weidmüller Interface GmbH & Co. KG**

Klingenbergstraße 26

D-32758 Detmold

Germany

www.weidmueller.com**Accessories****Crosshead screwdriver Pozidriv**

Crosshead screwdriver, Pozidriv, SDK PZ DIN 5262, ISO 8764/2-PZ, output to ISO 8764/1-PZ, ChromTop tip, SoftFinish grip

General ordering data

Type	SDK PZ2 X 100	Version
Order No.	2749450000	Screwdriver, Blade width (B): 100 mm, Blade thickness (A):
GTIN (EAN)	4050118895674	
Qty.	1 pc(s).	

Slotted screwdriver

Slotted screwdriver with rounded blade SD DIN 5265, ISO 2380/2, output to DIN 5264, ISO 2380/1. ChromTop tip, SoftFinish grip

General ordering data

Type	SDS 0.6X3.5X100	Version
Order No.	2749340000	Screwdriver, Blade width (B): 3.5 mm, Blade length: 100 mm, Blade
GTIN (EAN)	4050118895568	thickness (A): 0.6 mm
Qty.	1 pc(s).	

PSSR 230VAC/1PH AC 25A**Weidmüller Interface GmbH & Co. KG**

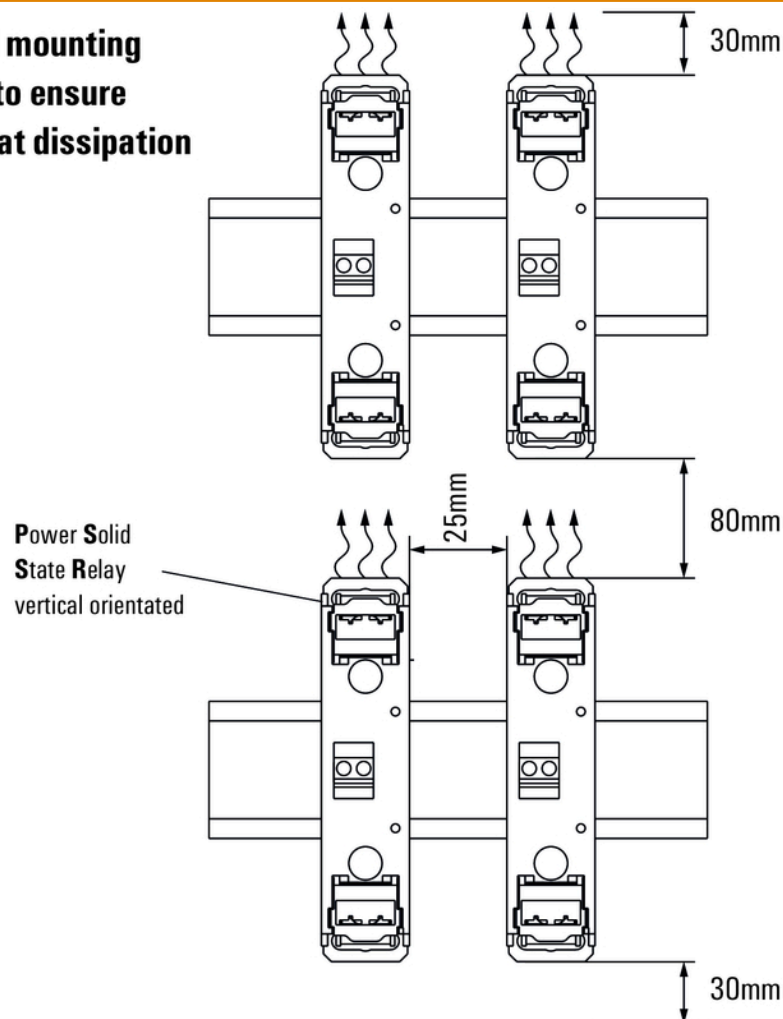
Klingenbergstraße 26

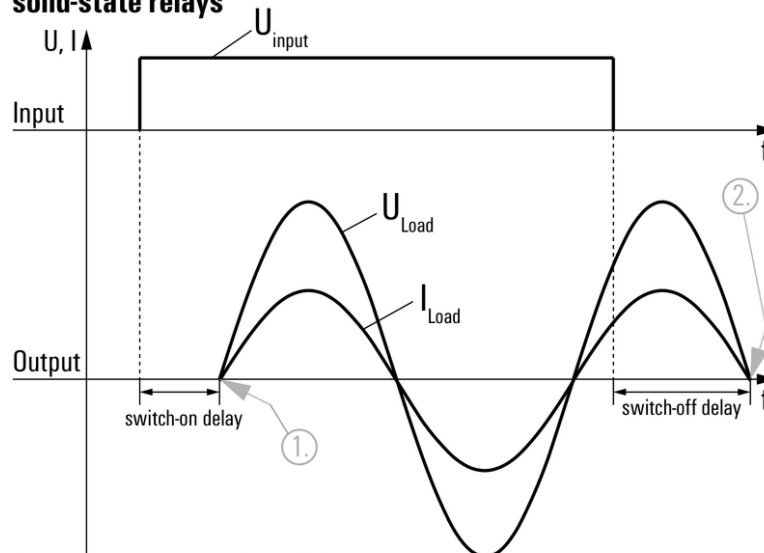
D-32758 Detmold

Germany

www.weidmueller.com**Drawings****Miscellaneous**

**Suggested mounting
distances to ensure
optimal heat dissipation**



**Signal characteristics of zero cross switching
solid-state relays**

Shown at an example with resistive load.

1. Switches on at first zero cross of mains voltage while control input gets signal.
2. Switches off at next zero cross of mains current after control input signal was switched off.

Switching DC voltages is not possible with this solid-state relays.