

**SAIE-M12S-PB-5.0U HW****Weidmüller Interface GmbH & Co. KG**

Klingenbergstraße 26

D-32758 Detmold

Germany

[www.weidmueller.com](http://www.weidmueller.com)

Various build-in connectors are required for the connections on the device side of the sensor/actuator cabling. These are available in the versions M12, M8 and M5.

**General ordering data**

Version	Built-in plugs, M12, PG 9, Number of poles: 2, 5 m
Order No.	<a href="#">1279490500</a>
Type	SAIE-M12S-PB-5.0U HW
GTIN (EAN)	4050118076417
Qty.	1 pc(s).

**SAIE-M12S-PB-5.0U HW****Weidmüller Interface GmbH & Co. KG**

Klingenbergstraße 26

D-32758 Detmold

Germany

[www.weidmueller.com](http://www.weidmueller.com)**Technical data****Dimensions and weights**

Net weight	320 g
------------	-------

**Technical specifications for cable**

Cable length	5 m	Core cross-section	0.25 mm <sup>2</sup>
Number of poles	2	PE function	No
Sheathing colour	violet (similar to RAL 4001)		

**Technical data customisable plug-in connectors**

Cable glands	PG 9	Coding	B-coded
Conductor cross-section, max.	0.25 mm <sup>2</sup>	Contact surface	Gold-plated
Housing main material	Zinc diecast, nickel-plated	Number of poles	2
Plugging cycles	≥ 500	Pollution severity	3
Protection degree	IP68	Rated current	4 A
Rated voltage	250 V	Temperature range of housing	-20 ... +60 °C
Type of connection	Pin		

**Classifications**

ETIM 6.0	EC002635	ETIM 7.0	EC003570
ETIM 8.0	EC003570	ETIM 9.0	EC003570
ECLASS 9.0	27-44-01-03	ECLASS 9.1	27-44-01-03
ECLASS 10.0	27-44-01-03	ECLASS 11.0	27-44-01-03
ECLASS 12.0	27-44-01-03	ECLASS 13.0	27-44-01-03

**Environmental Product Compliance**

REACH SVHC	Lead 7439-92-1
SCIP	e8d8af70-4c85-4483-bc8c-9bc5b598e2a9

**Approvals**

ROHS	Conform
------	---------

**Downloads**

Catalogues	<a href="#">Catalogues in PDF-format</a>
Brochures	<a href="#">FL FIELDWIRING EN</a> <a href="#">FL FIELDWIRING EN</a>

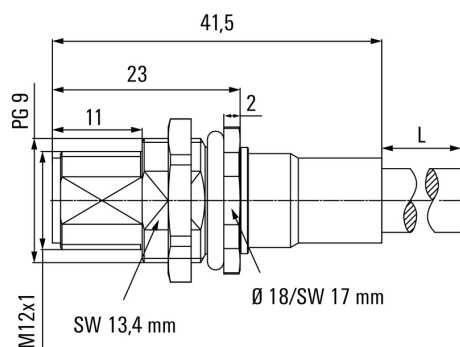
## SAIE-M12S-PB-5.0U HW

**Weidmüller Interface GmbH & Co. KG**  
Klingenbergstraße 26  
D-32758 Detmold  
Germany

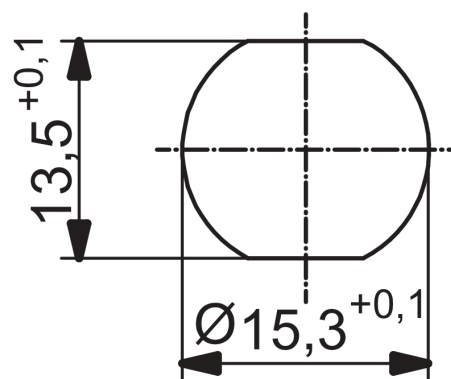
[www.weidmueller.com](http://www.weidmueller.com)

## Drawings

### Dimensioned drawing



### Detailed drawing



### Wiring diagram

