

SFX 9/40 S MC NE BL**Weidmüller Interface GmbH & Co. KG**

Klingenbergstraße 26

D-32758 Detmold

Germany

www.weidmueller.com

Similar to illustration



SlimFix X are halogen-free conductor and cable markers with a space-saving design. The markers can be fitted even after the conductor has been installed. SlimFix is an acknowledged and approved marker type in traffic engineering. The SF tool allows easy installation even in case of small markers.

- Halogen-free material
- Approved and accredited markers for traffic engineering applications, etc.
- Has to be fixed with cable ties if the conductor cross-section is larger than 16.0 mm²
- Markers in proven MultiCard format

For custom printing: Please send us a file of our labeling software M-Print PRO or M-Print PRO Online (without installation) for your labeling specifications.

General ordering data

Version	SlimFix X, Conductor and cable markers, 7 - 40 mm, 40 x 13.62 mm, blue
Order No.	1248790000
Type	SFX 9/40 S MC NE BL
GTIN (EAN)	4050118039221
Qty.	80 pc(s).
compatible printer	2715590000 2438520000 2438510000

SFX 9/40 S MC NE BL

Weidmüller Interface GmbH & Co. KG

Klingenbergstraße 26

D-32758 Detmold

Germany

www.weidmueller.com

Technical data

Dimensions and weights

Depth	1 mm	Depth (inches)	0.039 inch
Height	40 mm	Height (inches)	1.575 inch
Width	13.62 mm	Width (inches)	0.536 inch
Net weight	1.5 g		

Temperatures

Operating temperature range	-40...100 °C
-----------------------------	--------------

General data

Colour	blue	
Halogen	No	
Material	Polyamide 66	
Material colour according to resistance code	6	
Number of markers per combination	1 MultiCard = Conductor and cable markers	
Number of markers per packaging unit	Form of supply	MultiCard
Operating temperature range	-40...100 °C	
Operating temperature range, max.	100 °C	
Operating temperature range, min.	-40 °C	
Recommended industries	Transportation, Machinery	
Size of labelling field	40 x 8.5 mm	
UL 94 flammability rating	V-2	
Version	Installation with cable ties	
Width	13.62 mm	

Conductor and cable markers

Conductor O.D.	7 - 40 mm	Conductor O.D., max.	40 mm
Conductor O.D., min.	7 mm	Conductor cross-section, max.	500 mm ²
Conductor cross-section, min.	16 mm ²	Cross-section for connected wire	16 - 500 mm ²
Halogen	No		

Classifications

ETIM 6.0	EC001530	ETIM 7.0	EC001530
ETIM 8.0	EC001530	ETIM 9.0	EC001530
ECLASS 9.0	27-40-04-01	ECLASS 9.1	27-40-04-01
ECLASS 10.0	27-40-04-01	ECLASS 11.0	27-28-11-02
ECLASS 12.0	27-28-11-02	ECLASS 13.0	27-28-11-02

Environmental Product Compliance

REACH SVHC	/
------------	---

Approvals

ROHS	Conform
------	---------

SFX 9/40 S MC NE BL

Weidmüller Interface GmbH & Co. KG

Klingenbergstraße 26

D-32758 Detmold

Germany

www.weidmueller.com

Technical data

Downloads

Engineering Data	CAD data – STEP
Engineering Data	Zuken E3.S
Product Change Notification	MultiCard Material modification MultiCard Material Modifikation
Catalogues	Catalogues in PDF-format

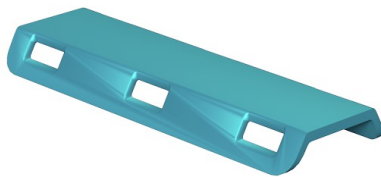
SFX 9/40 S MC NE BL

Weidmüller Interface GmbH & Co. KG
Klingenbergstraße 26
D-32758 Detmold
Germany

www.weidmueller.com

Drawings

Example of use



Similar to illustration

