

**CH20M BUS-PROFIL TS 35X15/250****Weidmüller Interface GmbH & Co. KG**

Klingenbergstraße 26

D-32758 Detmold

Germany

[www.weidmueller.com](http://www.weidmueller.com)**Product image****The integrated rail bus for the modular electronics housing system**

When supplying, connecting or distributing within modular applications, the rail bus can replace the tedious individual wiring process with a flexible and uninterrupted system-wide solution.

The system bus is securely integrated within the 35-mm standard mounting rail. The SMD-bus contact block can be reflow-soldered so that it can be completely automatically processed during the component assembly. The resistant, gold-plated contact surfaces ensure a permanent and reliable contact for all housing widths.

- **Unlimited scalability** The integrated connection solution covers all system widths: from the 6-mm slice to the 67-mm large-area housing.
- **Easy to service during installation** It's easy to replace a module, even in existing modules groups – without any influence on the neighbouring modules.
- **Universal integration** The uninterrupted system bus is securely integrated within the 35-mm standard mounting rail.
- **Maximum availability** Five fully-galvanized and partially gold-plated twin-arched contacts are used to establish a permanent contact to the rail bus. THR solder flanges ensure that the connection to the circuit board is stable.

**General ordering data**

|            |   |
|------------|---|
| Version    | OMNIMATE Housing - series CH20M, Length: 250 mm, Width: 25.1 mm |
| Order No.  | <a href="#">1248180000</a>                                      |
| Type       | CH20M BUS-PROFIL TS 35X15/250                                   |
| GTIN (EAN) | 4050118053265   |
| Qty.       | 5 pc(s).  |

## CH20M BUS-PROFIL TS 35X15/250

Weidmüller Interface GmbH &amp; Co. KG

Klingenbergstraße 26

D-32758 Detmold

Germany

www.weidmueller.com

## Technical data

## Dimensions and weights

|            |         |                 |            |
|------------|---------|-----------------|------------|
| Height     | 13.4 mm | Height (inches) | 0.528 inch |
| Width      | 25.1 mm | Width (inches)  | 0.988 inch |
| Length     | 250 mm  | Length (inches) | 9.842 inch |
| Net weight | 39.2 g  |                 |            |

## Material data

|                                  |                |                             |        |
|----------------------------------|----------------|-----------------------------|--------|
| Insulating material              | PA 66          | Colour                      | black  |
| Colour chart (similar)           | RAL 9011       | Insulating material group   | II     |
| Comparative Tracking Index (CTI) | 400 ≤ CTI <600 | UL 94 flammability rating   | V-0    |
| Operating temperature, min.      | -40 °C         | Operating temperature, max. | 120 °C |

## Material data

|                                  |                |                           |       |
|----------------------------------|----------------|---------------------------|-------|
| Comparative Tracking Index (CTI) | 400 ≤ CTI <600 | Insulating material       | PA 66 |
| Insulating material group        | II             | UL 94 flammability rating | V-0   |

## General data

|                   |                         |                        |            |
|-------------------|-------------------------|------------------------|------------|
| Colour            | black                   | Colour chart (similar) | RAL 9011   |
| Protection degree | IP20 in installed state | Rail                   | TS 35 x 15 |

## Classifications

|             |             |             |             |
|-------------|-------------|-------------|-------------|
| ETIM 6.0    | EC001031    | ETIM 7.0    | EC001031    |
| ETIM 8.0    | EC001031    | ETIM 9.0    | EC001031    |
| ECLASS 9.0  | 27-18-27-90 | ECLASS 9.1  | 27-18-27-90 |
| ECLASS 10.0 | 27-18-27-92 | ECLASS 11.0 | 27-18-27-92 |
| ECLASS 12.0 | 27-18-27-92 | ECLASS 13.0 | 27-18-27-92 |

## Environmental Product Compliance

REACH SVHC /

## Approvals

Approvals



ROHS Conform

**CH20M BUS-PROFIL TS 35X15/250****Weidmüller Interface GmbH & Co. KG**

Klingenbergstraße 26

D-32758 Detmold

Germany

[www.weidmueller.com](http://www.weidmueller.com)**Technical data****Downloads**Approval/Certificate/Document of Con-  
formity[Certification DNV GL](#)

Engineering Data

[CAD data – STEP](#)

Catalogues

[Catalogues in PDF-format](#)

Brochures

[FL ANALO.SIGN.CONV. EN](#)[MB DEVICE MANUF. EN](#)[FL MACHINE SAFETY EN](#)[FL 72H SAMPLE SER EN](#)[PO OMNIMATE EN](#)[FL 72H SAMPLE SER EN](#)[PO OMNIMATE EN](#)

## CH20M BUS-PROFIL TS 35X15/250

Weidmüller Interface GmbH & Co. KG  
Klingenbergstraße 26  
D-32758 Detmold  
Germany

www.weidmueller.com

## Accessories

## Bus contact block - Solder flange



### The integrated rail bus for the modular electronics housing system

When supplying, connecting or distributing within modular applications, the rail bus can replace the tedious individual wiring process with a flexible and uninterrupted system-wide solution.

The system bus is securely integrated within the 35-mm standard mounting rail. The SMD-bus contact block can be reflow-soldered so that it can be completely automatically processed during the component assembly. The resistant, gold-plated contact surfaces ensure a permanent and reliable contact for all housing widths.

- **Unlimited scalability** The integrated connection solution covers all system widths: from the 6-mm slice to the 67-mm large-area housing.
- **Easy to service during installation** It's easy to replace a module, even in existing modules groups – without any influence on the neighbouring modules.
- **Universal integration** The uninterrupted system bus is securely integrated within the 35-mm standard mounting rail.
- **Maximum availability** Five fully-galvanized and partially gold-plated twin-arched contacts are used to establish a permanent contact to the rail bus. THR solder flanges ensure that the connection to the circuit board is stable.

## General ordering data

| Type       | SR-SMD 4.50/05/90LF 1.5 ... | Version   | Product data    | Packaging |
|------------|-----------------------------|---|-----------------|-----------|
| Order No.  | <a href="#">1155900000</a>  | PCB plug-in connector, Bus-contact block for CH20M12-67, Solder     | IEC: 160 V      | Tape      |
| GTIN (EAN) | 4032248942381               | flange, THT/THR solder connection, Number of poles: 5, 180°, Solder | UL: 300 V / 5 A |           |
| Qty.       | 300 pc(s).                  | pin length (l): 1.5 mm, Gold-plated, black                          |                 |           |
| Type       | SR-SMD 4.50/05/90LF 1.5 ... | Version   | Product data    | Packaging |
| Order No.  | <a href="#">1155890000</a>  | PCB plug-in connector, Bus-contact block for CH20M12-67, Solder     | UL: 300 V / 5 A | Box       |
| GTIN (EAN) | 4032248942527               | flange, THT/THR solder connection, Number of poles: 5, 180°, Solder |                 |           |
| Qty.       | 78 pc(s).                   | pin length (l): 1.5 mm, Gold-plated, black                          |                 |           |

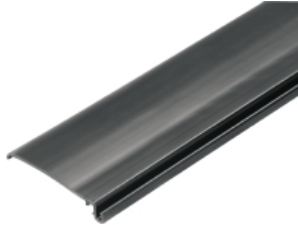
## CH20M BUS-PROFIL TS 35X15/250

Weidmüller Interface GmbH & Co. KG  
Klingenbergstraße 26  
D-32758 Detmold  
Germany

www.weidmueller.com

## Accessories

## CH20M BUS-ADP - Bus insert profil cover

**The integrated rail bus for the modular electronics housing system**

When supplying, connecting or distributing within modular applications, the rail bus can replace the tedious individual wiring process with a flexible and uninterrupted system-wide solution.

The system bus is securely integrated within the 35-mm standard mounting rail. The SMD-bus contact block can be reflow-soldered so that it can be completely automatically processed during the component assembly. The resistant, gold-plated contact surfaces ensure a permanent and reliable contact for all housing widths.

- **Unlimited scalability** The integrated connection solution covers all system widths: from the 6-mm slice to the 67-mm large-area housing.
- **Easy to service during installation** It's easy to replace a module, even in existing modules groups – without any influence on the neighbouring modules.
- **Universal integration** The uninterrupted system bus is securely integrated within the 35-mm standard mounting rail.
- **Maximum availability** Five fully-galvanized and partially gold-plated twin-arched contacts are used to establish a permanent contact to the rail bus. THR solder flanges ensure that the connection to the circuit board is stable.

## General ordering data

|            |                            |  |
|------------|----------------------------|--|
| Type       | CH20M BUS-ADP TS 35/250    | Version  |
| Order No.  | <a href="#">1248250000</a> | OMNIMATE Housing - series CH20M, Length: 250 mm, Width: 39.5 |
| GTIN (EAN) | 4050118053203              | mm   |
| Qty.       | 10 pc(s).                  |  |

## CH20M BUS-PROFIL TS 35X15/250

Weidmüller Interface GmbH & Co. KG  
Klingenbergstraße 26  
D-32758 Detmold  
Germany

www.weidmueller.com

## Accessories

## CH20M BUS-AP - Bus insert profil endplates



### The integrated rail bus for the modular electronics housing system

When supplying, connecting or distributing within modular applications, the rail bus can replace the tedious individual wiring process with a flexible and uninterrupted system-wide solution.

The system bus is securely integrated within the 35-mm standard mounting rail. The SMD-bus contact block can be reflow-soldered so that it can be completely automatically processed during the component assembly. The resistant, gold-plated contact surfaces ensure a permanent and reliable contact for all housing widths.

- **Unlimited scalability** The integrated connection solution covers all system widths: from the 6-mm slice to the 67-mm large-area housing.
- **Easy to service during installation** It's easy to replace a module, even in existing modules groups – without any influence on the neighbouring modules.
- **Universal integration** The uninterrupted system bus is securely integrated within the 35-mm standard mounting rail.
- **Maximum availability** Five fully-galvanized and partially gold-plated twin-arched contacts are used to establish a permanent contact to the rail bus. THR solder flanges ensure that the connection to the circuit board is stable.

### General ordering data

|            |                             |  |
|------------|-----------------------------|--|
| Type       | CH20M BUS-AP RE TS 35X7 ... | Version  |
| Order No.  | <a href="#">1193170000</a>  | OMNIMATE Housing - series CH20M, Length: 40.5 mm, Width: 5.1 |
| GTIN (EAN) | 4032248987924               | mm   |
| Qty.       | 50 pc(s).                   |  |
| Type       | CH20M BUS-AP LI TS 35X7 ... | Version  |
| Order No.  | <a href="#">1193160000</a>  | OMNIMATE Housing - series CH20M, Length: 40.5 mm, Width: 5.1 |
| GTIN (EAN) | 4032248987771               | mm   |
| Qty.       | 50 pc(s).                   |  |

## CH20M BUS-PROFIL TS 35X15/250

**Weidmüller Interface GmbH & Co. KG**  
 Klingenbergstraße 26  
 D-32758 Detmold  
 Germany

www.weidmueller.com

## Accessories

## Bus contact block - Middle solder flange



### The integrated rail bus for the modular electronics housing system

When supplying, connecting or distributing within modular applications, the rail bus can replace the tedious individual wiring process with a flexible and uninterrupted system-wide solution.

The system bus is securely integrated within the 35-mm standard mounting rail. The SMD-bus contact block can be reflow-soldered so that it can be completely automatically processed during the component assembly. The resistant, gold-plated contact surfaces ensure a permanent and reliable contact for all housing widths.

- **Unlimited scalability** The integrated connection solution covers all system widths: from the 6-mm slice to the 67-mm large-area housing.
- **Easy to service during installation** It's easy to replace a module, even in existing modules groups – without any influence on the neighbouring modules.
- **Universal integration** The uninterrupted system bus is securely integrated within the 35-mm standard mounting rail.
- **Maximum availability** Five fully-galvanized and partially gold-plated twin-arched contacts are used to establish a permanent contact to the rail bus. THR solder flanges ensure that the connection to the circuit board is stable.

## General ordering data

| Type       | SR-SMD 4.50/05/90LFM 3. ... | Version  | Product data    | Packaging |
|------------|-----------------------------|--|-----------------|-----------|
| Order No.  | <a href="#">1155880000</a>  | PCB plug-in connector, Bus-contact block for CH20M12-67, Middle    | IEC: 160 V      | Tape      |
| GTIN (EAN) | 4032248942305               | solder flange, THT/THR solder connection, Number of poles: 5, 180° | UL: 300 V / 5 A |           |
| Qty.       | 300 pc(s).                  | Solder pin length (l): 3.2 mm, Gold-plated, black                  |                 |           |
| Type       | SR-SMD 4.50/05/90LFM 3. ... | Version  | Product data    | Packaging |
| Order No.  | <a href="#">1155870000</a>  | PCB plug-in connector, Bus-contact block for CH20M12-67, Middle    | UL: 300 V / 5 A | Box       |
| GTIN (EAN) | 4032248942510               | solder flange, THT/THR solder connection, Number of poles: 5, 180° |                 |           |
| Qty.       | 78 pc(s).                   | Solder pin length (l): 3.2 mm, Gold-plated, black                  |                 |           |

## CH20M BUS-PROFIL TS 35X15/250

Weidmüller Interface GmbH &amp; Co. KG

Klingenbergstraße 26

D-32758 Detmold

Germany

www.weidmueller.com

## Accessories

## CH20M BUS - Bus printed circuit board

**The integrated rail bus for the modular electronics housing system**

When supplying, connecting or distributing within modular applications, the rail bus can replace the tedious individual wiring process with a flexible and uninterrupted system-wide solution.

The system bus is securely integrated within the 35-mm standard mounting rail. The SMD-bus contact block can be reflow-soldered so that it can be completely automatically processed during the component assembly. The resistant, gold-plated contact surfaces ensure a permanent and reliable contact for all housing widths.

- **Unlimited scalability** The integrated connection solution covers all system widths: from the 6-mm slice to the 67-mm large-area housing.
- **Easy to service during installation** It's easy to replace a module, even in existing modules groups – without any influence on the neighbouring modules.
- **Universal integration** The uninterrupted system bus is securely integrated within the 35-mm standard mounting rail.
- **Maximum availability** Five fully-galvanized and partially gold-plated twin-arched contacts are used to establish a permanent contact to the rail bus. THR solder flanges ensure that the connection to the circuit board is stable.

## General ordering data

|            |                            |  |
|------------|----------------------------|--|
| Type       | CH20M BUS 4.50/05 AU/250   | Version  |
| Order No.  | <a href="#">1248220000</a> | OMNIMATE Housing - series CH20M, Length: 250 mm, Width: 21.8 |
| GTIN (EAN) | 4050118053234              | mm   |
| Qty.       | 10 pc(s).                  |  |