

HDC 16B ABU**Weidmüller Interface GmbH & Co. KG**

Klingenbergstraße 26

D-32758 Detmold

Germany

www.weidmueller.com**IP65**

The special die-cast alloy and the multi-layered surface sealing provide complete protection for the HDC housings.

The cleverly designed interlock system is manufactured from stainless steel. This guarantees a long lifespan with high resistance to corrosion and impact.

The housing interlock system provides integrated safety. Our unique, patented spring system provides the housing interlock with a secure grip and prevents accidental opening.

The laser marking allows for easy and quick identification. Each housing is permanently labelled with a laser marking so that each product can be quickly designated and positioned.

Weidmüller RockStar® IP 65 / NEMA Type 4X housings - your first choice for industrial housings with IP 65 protection.

General ordering data

Version	HDC enclosures, Size: 6, Protection degree: IP65 (in plugged condition), Bulkhead housing, Side-locking clamp on lower side, Side-locking clamp not replaceable, Standard
Order No.	1208600000
Type	HDC 16B ABU
GTIN (EAN)	4008190881351
Qty.	1 pc(s).

HDC 16B ABU**Weidmüller Interface GmbH & Co. KG**

Klingenbergstraße 26

D-32758 Detmold

Germany

www.weidmueller.com

Technical data**Dimensions and weights**

Height	29.3 mm	Height (inches)	1.154 inch
Width	55 mm	Width (inches)	2.165 inch
Mounting dimension - height	32 mm	Mounting dimension - width	103 mm
Net weight	159 g		

Temperatures

Limit temperature	-40 °C ... 125 °C
-------------------	-------------------

Dimensions

Height of base B1	5.3 mm	Height of housing B	29.5 mm
Hole pitch length A2	103 mm	Total length housing	93.3 mm
Width base C1	47 mm	Width housing C	43 mm

General data

EMC housings	No	Housing main material	diecast aluminium
Material of locking element	Stainless steel, rust-proof	Protection degree	IP65 (in plugged condition)
Surface finish	Powder coating		

Version

BG	6	Clamp version	Side-locking clamp
Colour (RAL)	RAL 7035	Design	Standard
Design of housing		Design of locking system	Side-locking clamp on lower side, Side-locking clamp not replaceable
	Bulkhead housing		
Sealing	NBR	Size	6
Suitable for ModuPlug®	Yes	Top part/bottom part/lid	lower part
Type	Bulkhead (feed-through)		

Classifications

ETIM 6.0	EC000437	ETIM 7.0	EC000437
ETIM 8.0	EC000437	ETIM 9.0	EC000437
ECLASS 9.0	27-44-02-02	ECLASS 9.1	27-44-02-02
ECLASS 10.0	27-44-02-02	ECLASS 11.0	27-44-02-02
ECLASS 12.0	27-44-02-02	ECLASS 13.0	27-44-02-02
ECLASS 14.0	27-44-02-02		

Substance	Acetone
Chemical resistance	Conditionally resistant
Substance	Drilling oil
Chemical resistance	Resistant
Substance	Diesel
Chemical resistance	Resistant
Substance	Ethyl alcohol
Chemical resistance	Resistant
Substance	Transmission oil

HDC 16B ABU

Weidmüller Interface GmbH & Co. KG

Klingenbergstraße 26

D-32758 Detmold

Germany

www.weidmueller.com

Technical data

Chemical resistance	Resistant
Substance	Hydraulic oil
Chemical resistance	Resistant
Substance	Coolant
Chemical resistance	Resistant
Substance	Petroleum benzine
Chemical resistance	Resistant
Substance	Sweat
Chemical resistance	Resistant
Substance	Premium gasoline
Chemical resistance	Conditionally resistant
Substance	Water
Chemical resistance	Resistant
Substance	UV
Chemical resistance	Unstable
Substance	Ozone
Chemical resistance	Unstable

Environmental Product Compliance

REACH SVHC	Lead 7439-92-1 Potassium perfluorobutane sulfonate 29420-49-3
SCIP	e98b2b24-ba23-41bf-8d19-0dda3647412f
Chemical resistance	de.myview.objectmodel.impl.BlockImpl@6a5cebf6 de.myview.objectmodel.impl.BlockImpl@32dbfb97 de.myview.objectmodel.impl.BlockImpl@7c7d82b2 de.myview.objectmodel.impl.BlockImpl@6caff864 de.myview.objectmodel.impl.BlockImpl@61a1ad5c de.myview.objectmodel.impl.BlockImpl@c4be5bc de.myview.objectmodel.impl.BlockImpl@1cb38e95 de.myview.objectmodel.impl.BlockImpl@fcc39bf de.myview.objectmodel.impl.BlockImpl@636bbe57 de.myview.objectmodel.impl.BlockImpl@30ded183 de.myview.objectmodel.impl.BlockImpl@3099262b de.myview.objectmodel.impl.BlockImpl@5ef6e046 de.myview.objectmodel.impl.BlockImpl@605174c9
RoHS Compliance Status	Compliant with exemption
RoHS Exemption (if applicable/known)	6bl

Important note

Product information	When mounting the housings, make sure that the flat gasket is correctly seated.
---------------------	---

Approvals

Approvals



ROHS	Conform
UL File Number Search	UL Website
Certificate No. (cURus)	E92202

HDC 16B ABU

Weidmüller Interface GmbH & Co. KG

Klingenbergstraße 26

D-32758 Detmold

Germany

www.weidmueller.com

Technical data

Downloads

Approval/Certificate/Document of Conformity

[Manufacturer's declaration](#)

Engineering Data

[CAD data – STEP](#)

Product Change Notification

[20220214 Technical change to HDC housings](#)

[20220214 Technische Änderung bei HDC-Gehäusen](#)

Technical Documentation

[1208600000 HDC 16B ABU STP Blatt 1.pdf](#)

Catalogues

[Catalogues in PDF-format](#)

Brochures

[FL FIELDWIRING EN](#)

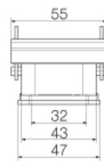
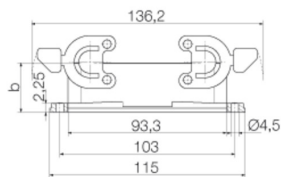
[FL FIELDWIRING EN](#)

HDC 16B ABU

Weidmüller Interface GmbH & Co. KG
Klingenbergstraße 26
D-32758 Detmold
Germany

www.weidmueller.com

Drawings



HDC 16B ABU

Weidmüller Interface GmbH & Co. KG
 Klingenbergstraße 26
 D-32758 Detmold
 Germany

www.weidmueller.com

Accessories

Hood, Cable Entry sideways



The special die-cast alloy and the multi-layered surface sealing provide complete protection for the HDC housings.

The cleverly designed interlock system is manufactured from stainless steel. This guarantees a long lifespan with high resistance to corrosion and impact.

The housing interlock system provides integrated safety. Our unique, patented spring system provides the housing interlock with a secure grip and prevents accidental opening.

The laser marking allows for easy and quick identification. Each housing is permanently labelled with a laser marking so that each product can be quickly designated and positioned.

Weidmüller RockStar® IP 65 / NEMA Type 4X housings - your first choice for industrial housings with IP 65 protection.

General ordering data

Type	HDC 40D TSBU 1M32G	Version
Order No.	1787000000	HDC enclosures, Size: 6, Protection degree: IP65 (in plugged condition), Cable entry from side, Plug housing, Side-locking clamp on lower side, high, Size of cable entries: M 32
GTIN (EAN)	4032248204243	
Qty.	1 pc(s).	
Type	HDC 40D TSBU 1PG21G	Version
Order No.	1656520000	HDC enclosures, Size: 6, Protection degree: IP65 (in plugged condition), Cable entry from side, Plug housing, Side-locking clamp on lower side, high, Size of cable entries: PG 21
GTIN (EAN)	4008190409531	
Qty.	1 pc(s).	
Type	HDC 16B TSBU 1M40G	Version
Order No.	1809620000	HDC enclosures, Size: 6, Protection degree: IP65 (in plugged condition), Cable entry from side, Plug housing, Side-locking clamp on lower side, Standard, Size of cable entries: M 40
GTIN (EAN)	4032248284979	
Qty.	1 pc(s).	
Type	HDC 40D TSBU 1M40G	Version
Order No.	1904800000	HDC enclosures, Size: 6, Protection degree: IP65 (in plugged condition), Cable entry from side, Plug housing, Side-locking clamp on lower side, high, Size of cable entries: M 40
GTIN (EAN)	4032248521852	
Qty.	1 pc(s).	
Type	HDC 16B TSBU 1PG21G	Version
Order No.	1656480000	HDC enclosures, Size: 6, Protection degree: IP65 (in plugged condition), Cable entry from side, Plug housing, Side-locking clamp on lower side, Standard, Size of cable entries: PG 21
GTIN (EAN)	4008190409494	
Qty.	1 pc(s).	
Type	HDC 40D TSBU 1M25G	Version
Order No.	1787010000	HDC enclosures, Size: 6, Protection degree: IP65 (in plugged condition), Cable entry from side, Plug housing, Side-locking clamp on lower side, high, Size of cable entries: M 25
GTIN (EAN)	4032248204250	
Qty.	1 pc(s).	
Type	HDC 16B TSBU 1M25G	Version
Order No.	1788180000	HDC enclosures, Size: 6, Protection degree: IP65 (in plugged condition), Cable entry from side, Plug housing, Side-locking clamp on lower side, Standard, Size of cable entries: M 25
GTIN (EAN)	4032248205714	
Qty.	1 pc(s).	
Type	HDC 40D TSBU 1PG29G	Version
Order No.	1656540000	HDC enclosures, Size: 6, Protection degree: IP65 (in plugged condition), Cable entry from side, Plug housing, Side-locking clamp on lower side, high, Size of cable entries: PG 29
GTIN (EAN)	4008190409555	
Qty.	1 pc(s).	

HDC 16B ABU

Weidmüller Interface GmbH & Co. KG

Klingenbergstraße 26

D-32758 Detmold

Germany

www.weidmueller.com

Accessories

Hood, Cable Entry at top



The special die-cast alloy and the multi-layered surface sealing provide complete protection for the HDC housings.

The cleverly designed interlock system is manufactured from stainless steel. This guarantees a long lifespan with high resistance to corrosion and impact.

The housing interlock system provides integrated safety. Our unique, patented spring system provides the housing interlock with a secure grip and prevents accidental opening.

The laser marking allows for easy and quick identification. Each housing is permanently labelled with a laser marking so that each product can be quickly designated and positioned.

Weidmüller RockStar® IP 65 / NEMA Type 4X housings - your first choice for industrial housings with IP 65 protection.

General ordering data

Type	HDC 16B TOBU 1PG21G	Version
Order No.	1656590000	HDC enclosures, Size: 6, Protection degree: IP65 (in plugged condition), Cable entry from top, Plug housing, Side-locking clamp on lower side, Standard, Size of cable entries: PG 21
GTIN (EAN)	4008190409609	
Qty.	1 pc(s).	
Type	HDC 40D TOBU 2M25	Version
Order No.	1208380000	HDC enclosures, Size: 6, Protection degree: IP65, IP65 (in plugged condition), Cable entry from top, Plug housing, Side-locking clamp on lower side, high, Size of cable entries: M 25
GTIN (EAN)	4032248100248	
Qty.	1 pc(s).	
Type	HDC 16B TOBU 1M25G	Version
Order No.	1788210000	HDC enclosures, Size: 6, Protection degree: IP65 (in plugged condition), Cable entry from top, Plug housing, Side-locking clamp on lower side, Standard, Size of cable entries: M 25
GTIN (EAN)	4032248205745	
Qty.	1 pc(s).	
Type	HDC 40D TOBU 1PG29G	Version
Order No.	1656650000	HDC enclosures, Size: 6, Protection degree: IP65 (in plugged condition), Cable entry from top, Plug housing, Side-locking clamp on lower side, high, Size of cable entries: PG 29
GTIN (EAN)	4008190409661	
Qty.	1 pc(s).	
Type	HDC 40D TOBU 1M25G	Version
Order No.	1787070000	HDC enclosures, Size: 6, Protection degree: IP65 (in plugged condition), Cable entry from top, Plug housing, Side-locking clamp on lower side, high, Size of cable entries: M 25
GTIN (EAN)	4032248204410	
Qty.	1 pc(s).	
Type	HDC 40D TOBU 1PG21G	Version
Order No.	1656630000	HDC enclosures, Size: 6, Protection degree: IP65 (in plugged condition), Cable entry from top, Plug housing, Side-locking clamp on lower side, high, Size of cable entries: PG 21
GTIN (EAN)	4008190409647	
Qty.	1 pc(s).	
Type	HDC 40D TOBU 1M32G	Version
Order No.	1787060000	HDC enclosures, Size: 6, Protection degree: IP65 (in plugged condition), Cable entry from top, Plug housing, Side-locking clamp on lower side, high, Size of cable entries: M 32
GTIN (EAN)	4032248204304	
Qty.	1 pc(s).	

HDC 16B ABU**Weidmüller Interface GmbH & Co. KG**

Klingenbergstraße 26

D-32758 Detmold

Germany

www.weidmueller.com**Accessories****Cover**

The special die-cast alloy and the multi-layered surface sealing provide complete protection for the HDC housings.

The cleverly designed interlock system is manufactured from stainless steel. This guarantees a long lifespan with high resistance to corrosion and impact.

The housing interlock system provides integrated safety. Our unique, patented spring system provides the housing interlock with a secure grip and prevents accidental opening.

The laser marking allows for easy and quick identification. Each housing is permanently labelled with a laser marking so that each product can be quickly designated and positioned.

Weidmüller RockStar® IP 65 / NEMA Type 4X housings - your first choice for industrial housings with IP 65 protection.

General ordering data

Type	HDC 16B DODQ 4B0	Version
Order No.	1665260000	HDC enclosures, Size: 6, Protection degree: IP65 (in plugged condition), Cover for lower part of housing, Side-locking clamp on lower side, Standard
GTIN (EAN)	4008190421960	
Qty.	1 pc(s).	