

**CH20M45 B RD/BK 2014****Weidmüller Interface GmbH & Co. KG**

Klingenbergstraße 26

D-32758 Detmold

Germany

[www.weidmueller.com](http://www.weidmueller.com)**Product image****Superior efficiency, flexibility and design - the "standard tailor-made fit"**

When selecting a housing design, flexibility is a key factor. Other important criteria are: scalability, customised design, innovative functionality and cost efficiency. You need a choice which offers the maximum performance with the minimum overhead.

The CH20M45 modular electronics housings come in an integrated extra-large assortment. It is suited for those electronics applications that require more space, such as compact controllers and power supplies.

The entire system is characterized by excellence: outstanding scalability and flexibility, a high security level, innovative application functionality and a variety of practical details.

- **Quicker installation** with features such as "Wire ready" the universal multi-tool screw head
- **User-friendly operations:** with clear and permanent labelling and extra marking possibilities, integrated release clip or transparent cover
- **Maximum interference immunity** with EMC-compliant construction featuring deeply overlapping module joint edges made from high-performance plastic
- **High operational reliability** with the unique Auto-Set coding system and featuring double-sided touch protection on the pin header and socket blocks

CH20M - a compact name for the most flexible system available on the market. It doesn't just stand for "Component Housing IP20 Modular".

CH20M also stands for efficiency and innovation throughout design, production and use.

**General ordering data**

|            |  |
|------------|--|
| Version    | Modular housing, OMNIMATE Housing - series CH20M red, Base element, Width: 45 mm |
| Order No.  | <a href="#">1206910000</a>   |
| Type       | CH20M45 B RD/BK 2014   |
| GTIN (EAN) | 4032248988655  |
| Qty.       | 6 pc(s).   |

## CH20M45 B RD/BK 2014

Weidmüller Interface GmbH &amp; Co. KG

Klingenbergstraße 26

D-32758 Detmold

Germany

www.weidmueller.com

## Technical data

## Dimensions and weights

|            |          |                 |            |
|------------|----------|-----------------|------------|
| Depth      | 107.4 mm | Depth (inches)  | 4.228 inch |
| Height     | 109.3 mm | Height (inches) | 4.303 inch |
| Width      | 45 mm    | Width (inches)  | 1.772 inch |
| Net weight | 39.33 g  |                 |            |

## Temperatures

|                             |                  |          |   |
|-----------------------------|------------------|----------|---|
| Operating temperature range | -40 °C... 120 °C | Humidity | 5 - 93% rel. humidity, Tu = 40°C, no condensation |
|-----------------------------|------------------|----------|---|

## Material data

|                                  |           |                           |             |
|----------------------------------|-----------|---------------------------|-------------|
| Comparative Tracking Index (CTI) | 600 ≤ CTI | Insulating material       | PA 66 GF 30 |
| Insulating material group        | I         | UL 94 flammability rating | V-0         |

## General data

|                      |       |                        |                         |
|----------------------|-------|------------------------|-------------------------|
| Colour               | red   | Colour chart (similar) | RAL 3020                |
| Encapsulation option | No    | Protection degree      | IP20 in installed state |
| Rail                 | TS 35 |                        |                         |

## Assembly properties

|   |              |  |         |
|---|--------------|--|---------|
| Number of slots for female connectors of the mounted assembly, max. | 12           | Number of PCBs, max.                                   | 2       |
| Number of connection levels, max.                                   | 3            | Number of poles, max.                                  | 48      |
| Height of components on the PCB (usage of 1 PCB), max.              | 38.6 mm      | Height of components on the PCB (usage of 2 PCB), max. | 34.7 mm |
| Type of assembly of the PCB   | double-sided |  |         |

## Mechanical tests

|                       |   |  |  |
|-----------------------|---|--|--|
| According to Standard | DIN EN 61373:1999 (shock and vibration)   |  |  |
| Test conditions       | five housings installed in a row, 200g additional weight per PCB, two PCB mounted |  |  |
| Proved axles          | X, Y, Z   |  |  |
| Shock test            | General test advices  | All mechanical tests were tested on exemplary setup, or in view of depending regulation. The specified results do not replace approval relevant tests. They are just orientation values. |  |
|                       | Test category   | 1  |  |
|                       | Number of shocks per axle   | 3 in positive and negative direction   |  |
|                       | Shock duration  | 30 ms  |  |
|                       | Acceleration horizontal   | 30 m/s <sup>2</sup>  |  |
|                       | Acceleration vertical   | 30 m/s <sup>2</sup>  |  |
|                       | Acceleration longitudinal   | 50 m/s <sup>2</sup>  |  |
| Vibration test        | Test category   | 1B   |  |
|                       | Effective acceleration  | 7.9 m/s <sup>2</sup>   |  |
|                       | Test duration   | 5 hours per axle   |  |

## CH20M45 B RD/BK 2014

**Weidmüller Interface GmbH & Co. KG**  
 Klingenbergstraße 26  
 D-32758 Detmold  
 Germany

www.weidmueller.com

## Technical data

## Thermal tests

|               |                         |  |
|---------------|-------------------------|--|
| Thermal tests | General test advices    | All thermal tests were tested on exemplary set-up, or in view of depending regulation. The specified results do not replace approval relevant tests. They are just orientation values. |
|               | Test conditions         | seven housings installed in a row - no spacing   |
|               | Test axles              | horizontal   |
|               | Ambient temperature     | 55 °C  |
|               | Power dissipation, max. | 4.2 W  |
|               | Ambient temperature     | 50 °C  |
|               | Power dissipation, max. | 4.8 W  |
|               | Ambient temperature     | 40 °C  |
|               | Power dissipation, max. | 5.9 W  |
|               | Ambient temperature     | 20 °C  |
|               | Power dissipation, max. | 8.25 W   |

## Component properties

|                       |       |                                   |   |
|-----------------------|-------|-----------------------------------|---|
| Color of clip-on foot | black | Number of connection levels, max. | 3 |
|-----------------------|-------|-----------------------------------|---|

## Design - IN requirements

|                                      |          |                             |         |
|--------------------------------------|----------|-----------------------------|---------|
| PCB thickness                        | 1.6 mm   | Tolerance for the PCB shape | ±0.1 mm |
| Tolerance of circuit board thickness | ±0.15 mm |                             |         |

## Individualization options

|                                 |                                |                                      |                  |
|---------------------------------|--------------------------------|--------------------------------------|------------------|
| Alternative colours             | More on request                | Customer specific labelling possible | Yes              |
| Customer specific order process | See guideline under down-loads | Processing possibilities             | Laser processing |

## Classifications

|             |             |             |             |
|-------------|-------------|-------------|-------------|
| ETIM 8.0    | EC001031    | ETIM 9.0    | EC001031    |
| ECLASS 11.0 | 27-18-27-92 | ECLASS 12.0 | 27-18-27-92 |
| ECLASS 13.0 | 27-19-06-01 |             |             |

## Environmental Product Compliance

|            |   |
|------------|---|
| REACH SVHC | / |
|------------|---|

## Important note

|                     |   |
|---------------------|---|
| Product information | Circuit board contour, restricted zones, and other information for the design in of the circuit board can be found in the category connection technology under the corresponding male headers in the downloads. |
|---------------------|---|

## Approvals

|      |         |
|------|---------|
| ROHS | Conform |
|------|---------|

## CH20M45 B RD/BK 2014

**Weidmüller Interface GmbH & Co. KG**  
Klingenbergstraße 26  
D-32758 Detmold  
Germany

[www.weidmueller.com](http://www.weidmueller.com)

## Technical data

### Downloads

|                    |   |
|--------------------|---|
| Engineering Data   | <a href="#">CAD data – STEP</a>   |
|                    | <a href="#">CAD data – PCB_position_50882_LP-POSITION_45MM</a>            |
|                    | <a href="#">CAD data – Pin_header_pin_length_CH20M_A_OV_PCB-SHL_70315</a> |
| User Documentation | <a href="#">Guideline customerspecific housings</a>                       |
|                    | <a href="#">Guideline kundenspezifische Gehäuse</a>                       |
| Catalogues         | <a href="#">Catalogues in PDF-format</a>                                  |
| Brochures          | <a href="#">FL ANALO.SIGN.CONV. EN</a>                                    |
|                    | <a href="#">MB DEVICE MANUF. EN</a>                                       |
|                    | <a href="#">FL MACHINE SAFETY EN</a>                                      |
|                    | <a href="#">FL 72H SAMPLE SER EN</a>                                      |
|                    | <a href="#">PO OMNIMATE EN</a>  |

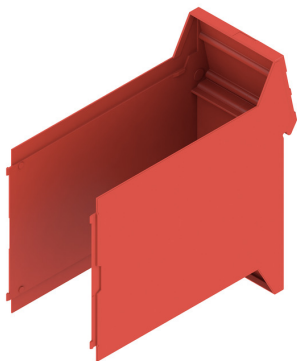
## CH20M45 B RD/BK 2014

**Weidmüller Interface GmbH & Co. KG**  
Klingenbergstraße 26  
D-32758 Detmold  
Germany

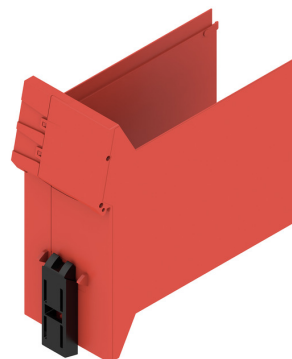
[www.weidmueller.com](http://www.weidmueller.com)

## Drawings

### Product image



### Product image



Base element without cut-out in snap-in foot area

### Dimensioned drawing

