

CH20M12 S PPSC BL 2013

Weidmüller Interface GmbH & Co. KG

Klingenbergstraße 26

D-32758 Detmold

Germany

www.weidmueller.com

Product image

**Superior efficiency, flexibility and design - the "standard tailor-made fit"**

When selecting a housing design, flexibility is a key factor. Other important criteria are: scalability, customized design, innovative functionality and cost efficiency. You need a choice which offers the maximum performance with the minimum overhead.

The CH20M12 modular electronics housing is the "small" option amongst the "large" housing solutions for compact electronics applications.

The entire system is characterized by excellence: outstanding scalability and flexibility, a high security level, innovative application functionality and a variety of practical details.

- **Quicker installation** with features such as "Wire ready" the universal multi-tool screw head
- **User-friendly operations:** with clear and permanent labelling and extra marking possibilities, integrated release clip or transparent cover
- **Maximum interference immunity** with EMC-compliant construction featuring deeply overlapping module joint edges made from high-performance plastic
- **High operational reliability** with the unique Auto-Set coding system and featuring double-sided touch protection on the pin header and socket blocks

CH20M - a compact name for the most flexible system available on the market. It doesn't just stand for "Component Housing IP20 Modular".

CH20M also stands for efficiency and innovation throughout design, production and use.

General ordering data

| | |
|---|---|
| Version | Modular housing, OMNIMATE Housing - series CH20M light blue, Side element, Width: 12.5 mm |
| Order No. | 1104220000 |
| Type | CH20M12 S PPSC BL 2013 |
| GTIN (EAN) | 4032248878826 |
| Qty. | 14 pc(s). |
| Information regarding whole assembly, see referenced articles | 1104180000 |

CH20M12 S PPSC BL 2013**Weidmüller Interface GmbH & Co. KG**

Klingenbergstraße 26

D-32758 Detmold

Germany

www.weidmueller.com**Technical data****Dimensions and weights**

| | | | |
|------------|----------|-----------------|------------|
| Depth | 105.5 mm | Depth (inches) | 4.154 inch |
| Height | 22.8 mm | Height (inches) | 0.898 inch |
| Width | 12.5 mm | Width (inches) | 0.492 inch |
| Net weight | 7 g | | |

Temperatures

| | | | |
|-----------------------------|------------------|----------|---|
| Operating temperature range | -40 °C... 120 °C | Humidity | 5 - 93% rel. humidity, Tu = 40°C, no condensation |
|-----------------------------|------------------|----------|---|

Material data

| | | | |
|----------------------------------|-----------|---------------------------|-------------|
| Comparative Tracking Index (CTI) | 600 ≤ CTI | Insulating material | PA 66 GF 30 |
| Insulating material group | I | UL 94 flammability rating | V-0 |

General data

| | | | |
|----------------------|------------|------------------------|-------------------------|
| Colour | light blue | Colour chart (similar) | RAL 5012 |
| Encapsulation option | No | Protection degree | IP20 in installed state |

Component properties

| | | | |
|---|----|----------------------------------|---|
| Cut out as preparation for functional port integrated | No | Number of connection levels | 2 |
| Number of poles, max. | 4 | Number of slots for female plugs | 2 |
| Number of ventilation openings | 1 | | |

Classifications

| | | | |
|-------------|-------------|-------------|-------------|
| ETIM 7.0 | EC001031 | ETIM 8.0 | EC001031 |
| ETIM 9.0 | EC001031 | ECLASS 11.0 | 27-18-27-92 |
| ECLASS 12.0 | 27-18-27-92 | ECLASS 13.0 | 27-19-06-02 |

Environmental Product Compliance

| | |
|------------|---|
| REACH SVHC | / |
|------------|---|

Approvals

| | |
|------|---------|
| ROHS | Conform |
|------|---------|

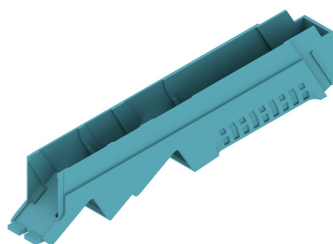
Downloads

| | |
|------------------|---|
| Engineering Data | CAD data – STEP |
| Catalogues | Catalogues in PDF-format |
| Brochures | FL ANALO.SIGN.CONV. EN MB DEVICE MANUF. EN FL MACHINE SAFETY EN FL 72H SAMPLE SER EN PO OMNIMATE EN |

CH20M12 S PPSC BL 2013

Weidmüller Interface GmbH & Co. KG
Klingenbergstraße 26
D-32758 Detmold
Germany

www.weidmueller.com

Drawings**Product image****Product image****Dimensioned drawing**