

**IE-C5DD4UG0050MCAA70-E****Weidmüller Interface GmbH & Co. KG**

Klingenbergstraße 26

D-32758 Detmold

Germany

[www.weidmueller.com](http://www.weidmueller.com)

Assembled IE cables, PROFINET, Cat. 5, PUR, green

**General ordering data**

Version	Dragline cable, PROFINET, M12 D-code – IP 67 angled pin, RJ45 IP 20, Cat.5 (ISO/IEC 11801) / Cat.5e (TIA T568-B), PUR, 5 m
Order No.	<a href="#">1059760050</a>
Type	IE-C5DD4UG0050MCAA70-E
GTIN (EAN)	4032248808113
Qty.	1 pc(s).

## IE-C5DD4UG0050MCAA70-E

Weidmüller Interface GmbH &amp; Co. KG

Klingenbergstraße 26

D-32758 Detmold

Germany

www.weidmueller.com

## Technical data

## Dimensions and weights

Length	5 m	Length (inches)	196.85 inch
Net weight	341 g		

## Temperatures

Storage temperature	-50 °C...70 °C	Operating temperature	-40 °C...70 °C
Installation temperature	-20 °C...60 °C		

## Cable specific standards

Standard, insulating material	DIN EN 50290-2-23 (VDE 0819) Table 2/A (HD 624.3)	Standard, shielding material	DIN EN 13602 Cu-ETP-A..B
Standard, wire material	DIN EN 13602 Cu-ETP-A		

## General standards

Certificate no. (cULus)	E316369	Connector standard	IEC 61076-2-101, IEC 60603-7-51
-------------------------	---------	--------------------	---------------------------------

## Standards

Connector standard	IEC 61076-2-101, IEC 60603-7-51	Standard, insulating material	DIN EN 50290-2-23 (VDE 0819) Table 2/A (HD 624.3)
Standard, shielding material	DIN EN 13602 Cu-ETP-A..B	Standard, wire material	DIN EN 13602 Cu-ETP-A

## Cable structure

Arrangement of wire cores	Star-quad	Colour sequence or wires - wire pairs	white, yellow, blue, orange
Complete shielding	Aluminium foil, Shielding braid made from copper wiring	Cross-section	4*AWG 22/7 - 0.32 mm <sup>2</sup>
Diameter of inner sheathing	3.9 mm	Filler	As central element
Insulation	PE	Insulation cross-section	1.5 mm
Material sheath	PUR	Number of wires	4
Overlap of shielding braid	85 %	Sheath diameter, max.	6.7 mm
Sheath diameter, min.	6.3 mm	Sheathing colour	green (RAL 6018)
Sheathing material thickness	0.9 mm	Shielding	SF/UTP
Shielding braid thickness	0.13 mm	Standard designations	2YH(ST)C11Y 2x2x0.75/1,5-100 LI VZN GN FRNC
Strands	7	Wire core insulation thickness	0.38 mm
Wire material	Stranded tin-plated copper wire		

## IE-C5DD4UG0050MCAA70-E

Weidmüller Interface GmbH &amp; Co. KG

Klingenbergstraße 26

D-32758 Detmold

Germany

www.weidmueller.com

## Technical data

## Electrical properties of cable

Capacity at 1 kHz	52 nF/km	Category	Cat.5 (ISO/IEC 11801) / Cat.5e (TIA T568-B)
Characteristic impedance	100 ± 15 Ω at 1–100 MHz	Delay skew	40 ns/100m
Loop resistance	120 Ω/km	Operating voltage (UL rating)	600 V
Operating voltage, UL	600 V	Resistance differential	3 %
Signal propagation time	5.3 ns/m	Speed	180 m/min
Test voltage: wire-wire-shield	2000 V <sub>eff</sub> , 50 Hz, 1 min	Transfer impedance	20 mΩ/m at 10 MHz

## Mechanical and material properties of cable

Abrasion resistance	very good	Acceleration	4 m/s <sup>2</sup>
Bending cycles	3 Mio	Fire propagation	No
Halogen	halogen-free, according to IEC 60754-2	Min. bending radius, once only	5 x cable diameter
Min. bending radius, repetitive	7.5 x cable diameter	Pulling force	≤ 150 N
Resistance to oils	in accordance with IEC 60811-2-1	Resistance to spread of flame	in accordance with IEC 60332-1
Silicone-free	Yes	Speed	180 m/min
UV-resistant	Yes		

## Plug, left

Plug left	M12, IP67, male contact, angled 90°, plug, Plastic, shielded
-----------	--

## Plug, right

Plug right	RJ45, IP20, male contact, straight, plug, Plastic, shielded
------------	---

## Classifications

ETIM 6.0	EC002599	ETIM 7.0	EC002599
ETIM 8.0	EC002599	ETIM 9.0	EC002599
ECLASS 9.0	27-06-03-08	ECLASS 9.1	27-06-03-08
ECLASS 10.0	27-06-03-08	ECLASS 11.0	27-06-03-08
ECLASS 12.0	27-06-03-08	ECLASS 13.0	27-06-03-08

## Environmental Product Compliance

REACH SVHC	Lead 7439-92-1
SCIP	67cf1078-beca-4687-860b-dc475a6ec24a

**IE-C5DD4UG0050MCAA70-E****Weidmüller Interface GmbH & Co. KG**

Klingenbergstraße 26

D-32758 Detmold

Germany

[www.weidmueller.com](http://www.weidmueller.com)**Technical data****Approvals**

Approvals



ROHS	Conform
UL File Number Search	UL Website
Certificate no. (cULus)	E316369

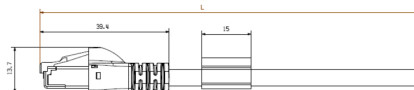
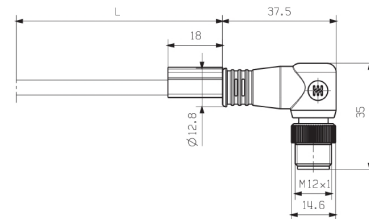
**Downloads**

Approval/Certificate/Document of Conformity	<a href="#">PROFINET Manufacturer's Declaration</a>
Engineering Data	<a href="#">CAD data – STEP</a>
Product Change Notification	<a href="#">PCN-PB47-20230322-A-EN</a> <a href="#">PCN-PB47-20230322-A-DE</a>
User Documentation	<a href="#">MAN IE GUIDE DE</a> <a href="#">MAN IE GUIDE EN</a>
Catalogues	<a href="#">Catalogues in PDF-format</a>
Brochures	<a href="#">FL FIELDWIRING EN</a> <a href="#">PI PROFINET CABLING EN</a>

**IE-C5DD4UG0050MCAA70-E**

**Weidmüller Interface GmbH & Co. KG**  
Klingenbergstraße 26  
D-32758 Detmold  
Germany

[www.weidmueller.com](http://www.weidmueller.com)

**Drawings****Dimensioned drawing****Dimensioned drawing****Wiring**

RJ45		M12
1	yellow	1
3	white	2
2	orange	3
6	blue	4

**IE-C5DD4UG0050MCAA70-E****Weidmüller Interface GmbH & Co. KG**

Klingenbergstraße 26

D-32758 Detmold

Germany

[www.weidmueller.com](http://www.weidmueller.com)**Accessories****Blank**

TM-I is an acknowledged and accredited marker type for traffic engineering applications. There are various different tag lengths available for individual labelling with long character strings. Easy handling of separation and installation thanks to the project marker field. Pre-attachment of sleeves and retrofitting of tags offer excellent versatility

The special contour of TM-I allows easy assembly and secures firm positioning. They are compatible with a number of commercially available sleeves. Thanks to the MultiCard format, the tags can be printed quickly and conveniently with the PrintJet CONNECT, plotter or the STI pen.

- Easy handling of separation and installation thanks to the project marker field.
- Acknowledged and accredited marker for traffic engineering applications
- Pre-attachment of sleeves and retrofitting of tags offer excellent versatility
- Not suited for labelling with P-Ink or STI pen in connection with CLI T sleeves

**For custom printing:** Please send us a file of our labeling software M-Print PRO or M-Print PRO Online (without installation) for your labeling specifications.

**General ordering data**

Type	TM-I 18 MC NE WS	Version
Order No.	<a href="#">1718431044</a>	TM-I, Insert markers, 18 x 4 mm, white
GTIN (EAN)	4008190349011	
Qty.	320 pc(s).	

**IE-C5DD4UG0050MCAA70-E****Weidmüller Interface GmbH & Co. KG**

Klingenbergstraße 26

D-32758 Detmold

Germany

[www.weidmueller.com](http://www.weidmueller.com)**Accessories****Blank**

TM-I is an acknowledged and accredited marker type for traffic engineering applications. There are various different tag lengths available for individual labelling with long character strings. Easy handling of separation and installation thanks to the project marker field. Pre-attachment of sleeves and retrofitting of tags offer excellent versatility

The special contour of TM-I allows easy assembly and secures firm positioning. They are compatible with a number of commercially available sleeves. Thanks to the MultiCard format, the tags can be printed quickly and conveniently with the PrintJet CONNECT, plotter or the STI pen.

- Easy handling of separation and installation thanks to the project marker field.
- Acknowledged and accredited marker for traffic engineering applications
- Pre-attachment of sleeves and retrofitting of tags offer excellent versatility
- Not suited for labelling with P-Ink or STI pen in connection with CLI T sleeves

**For custom printing:** Please send us a file of our labeling software M-Print PRO or M-Print PRO Online (without installation) for your labeling specifications.

**General ordering data**

Type	TM-I 12 MC NE WS	Version
Order No.	<a href="#">1718411044</a>	TM-I, Insert markers, 12 x 4 mm, white
GTIN (EAN)	4008190348977	
Qty.	320 pc(s).	