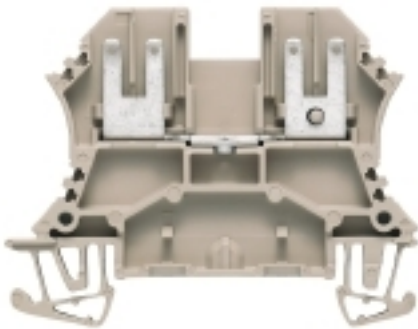


WDU 2.5 FF 2X2.8**Weidmüller Interface GmbH & Co. KG**

Klingenbergstraße 26

D-32758 Detmold

Germany

www.weidmueller.com**Product image**

Are you looking for an interface from electrical engineering to electronics? To be able to feed through to the electronic devices on the panel sometimes a solder connection or a standard pluggable solution is appropriate.

General ordering data

| | |
|------------|---|
| Version | W-Series, Feed-through terminal, Rated cross-section: 1 mm ² , Flat-blade connection |
| Order No. | 1021900000 |
| Type | WDU 2.5 FF 2X2.8 |
| GTIN (EAN) | 4008190138516 |
| Qty. | 100 pc(s). |

WDU 2.5 FF 2X2.8

Weidmüller Interface GmbH & Co. KG

Klingenbergstraße 26

D-32758 Detmold

Germany

www.weidmueller.com

Technical data

Dimensions and weights

| | | | |
|--------------------------|------------|----------------|------------|
| Depth | 46.25 mm | Depth (inches) | 1.821 inch |
| Depth including DIN rail | 47 mm | Height | 60 mm |
| Height (inches) | 2.362 inch | Width | 5.1 mm |
| Width (inches) | 0.201 inch | Net weight | 6.93 g |

Temperatures

| | | | |
|----------------------------------|----------------|----------------------------------|--------|
| Storage temperature | -25 °C...55 °C | Continuous operating temp., min. | -50 °C |
| Continuous operating temp., max. | 120 °C | | |

Material data

| | | | |
|---------------------------|-------|--------|------------|
| Material | Wemid | Colour | dark beige |
| UL 94 flammability rating | V-0 | | |

System specifications

| | | | |
|-------------------------------------|---|-------------------------------|-----|
| Version | With cable lug connection F2.8, Both sides, plug-gable, One end without connector | End cover plate required | Yes |
| Number of potentials | 1 | Number of levels | 1 |
| Number of clamping points per level | 0 | Number of potentials per tier | 1 |
| Levels cross-connected internally | No | PE connection | No |
| Rail | TS 35 | N-function | No |
| PE function | No | PEN function | No |

Additional technical data

| | | | |
|--------------------------|-------|-----------------------------|---------|
| Explosion-tested version | No | Number of similar terminals | 1 |
| Open sides | right | Type of mounting | Snap-on |

CSA rating data

| | | | |
|-------------------------------|-----------|-------------------------------|--------|
| Certificate No. (CSA) | 12400-135 | Current size C (CSA) | 10 A |
| Voltage size C (CSA) | 300 V | Wire cross section max. (CSA) | 12 AWG |
| Wire cross section min. (CSA) | 26 AWG | | |

Conductors for clamping (additional connection)

Connection type, additional connection Flat-blade connection

Conductors for clamping (rated connection)

| | | | |
|-----------------------|-------------------|----------------------|-----------------------|
| Clamping range, max. | 1 mm ² | Connection direction | top |
| Number of connections | 4 | Type of connection | Flat-blade connection |

General

| | | | |
|------|-------|-----------|---|
| Rail | TS 35 | Standards | IEC 61210, In accordance with IEC 60947-7-1 |
|------|-------|-----------|---|

Other connections

| | |
|----------------------|----------|
| Cable-lug connection | Not slit |
|----------------------|----------|

Creation date July 7, 2024 8:19:58 PM CEST

WDU 2.5 FF 2X2.8

Weidmüller Interface GmbH & Co. KG

Klingenbergstraße 26

D-32758 Detmold

Germany

www.weidmueller.com

Technical data

Rating data

| | | | |
|--|-------------------|---------------------------------|---|
| Rated cross-section | 1 mm ² | Rated voltage | 500 V |
| Rated DC voltage | 500 V | Rated current | 12 A |
| Current at maximum wires | 12 A | Standards | IEC 61210, In accordance with IEC 60947-7-1 |
| Volume resistance according to IEC 60947-7-x | 2.37 mΩ | Rated impulse withstand voltage | 6 kV |
| Power loss in accordance with IEC 60947-7-x | 0.43 W | Pollution severity | 3 |

UL rating data

| | | | |
|---|--------|---|--------|
| Certificate No. (UR) | E60693 | Conductor size Factory wiring max. (UR) | 14 AWG |
| Conductor size Factory wiring min. (UR) | 22 AWG | Conductor size Field wiring max. (UR) | 14 AWG |
| Conductor size Field wiring min. (UR) | 22 AWG | Current size B (UR) | 16 A |
| Current size C (UR) | 16 A | Voltage size B (UR) | 250 V |
| Voltage size C (UR) | 300 V | | |

Classifications

| | | | |
|-------------|-------------|-------------|-------------|
| ETIM 6.0 | EC000897 | ETIM 7.0 | EC000897 |
| ETIM 8.0 | EC000897 | ETIM 9.0 | EC000897 |
| ECLASS 9.0 | 27-14-11-20 | ECLASS 9.1 | 27-14-11-20 |
| ECLASS 10.0 | 27-14-11-20 | ECLASS 11.0 | 27-14-11-20 |
| ECLASS 12.0 | 27-14-11-20 | ECLASS 13.0 | 27-25-01-01 |

Environmental Product Compliance

REACH SVHC /

Approvals

Approvals



| | |
|-----------------------|------------|
| ROHS | Conform |
| UL File Number Search | UL Website |
| Certificate No. (UR) | E60693 |

Downloads

| | |
|---|--|
| Approval/Certificate/Document of Conformity | NEMKO certificate Lloyds Register Certificate CE Declaration of Conformity UKCA declaration of conformity Confirmation of Standards EN 45545-2_2020-10 |
| Engineering Data | CAD data – STEP |
| Engineering Data | Zuken E3.S |
| User Documentation | StorageConditionsTerminalBlocks |
| Catalogues | Catalogues in PDF-format |
| Brochures | |

WDU 2.5 FF 2X2.8

Weidmüller Interface GmbH & Co. KG

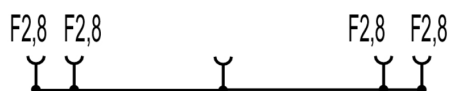
Klingenbergstraße 26

D-32758 Detmold

Germany

www.weidmueller.com

Drawings



WDU 2.5 FF 2X2.8

Weidmüller Interface GmbH & Co. KG

Klingenbergstraße 26

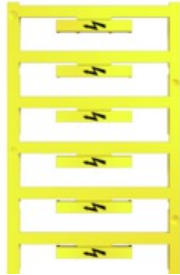
D-32758 Detmold

Germany

www.weidmueller.com

Accessories

With lightning flash



The WAD connector marker is suitable for W-series terminals and for the WEW 35/2 and ZEW 35/2 end brackets. The markers are available as blank markers, with custom printing or standard print with lightning symbol. The WAD MultiCard markers are suitable for labelling with PrintJet CONNECT printers.

For custom printing: Please send us a file of our labeling software M-Print PRO or M-Print PRO Online (without installation) for your labeling specifications.

General ordering data

| | | |
|------------|----------------------------|---|
| Type | WAD 5 MC B GE/SW | Version |
| Order No. | 1120450000 | Group markers, Cover, 33.3 x 5 mm, Pitch in mm (P): 5.00 WDU 2.5, |
| GTIN (EAN) | 4032248901272 | WEW 35/2, ZEW 35/2, yellow |
| Qty. | 48 pc(s). | |

Blank



The Dekafix (DEK) marker is the universal marker for all conductor and plug-in connectors as well as for electronic sub-assemblies. The system is ideal for short number sequences and covers a wide range of ready-printed markers.

Strips for fast installation in only one work step. The printing is easy to read, rich in contrast and available in various widths.

- Large range of ready-to-use markers
- Strips for fast installation
- Terminal markers, suitable for all Weidmüller cable connectors
- Available as blank MultiCard or with standard printing

For custom printing: Please send us a file of our labeling software M-Print PRO or M-Print PRO Online (without installation) for your labeling specifications.

General ordering data

| | | |
|------------|----------------------------|---|
| Type | DEK 5/5 MC NE WS | Version |
| Order No. | 1609801044 | Dekafix, Terminal marker, 5 x 5 mm, Pitch in mm (P): 5.00 |
| GTIN (EAN) | 4008190397111 | Weidmueller, white |
| Qty. | 1,000 pc(s). | |

WDU 2.5 FF 2X2.8

Weidmüller Interface GmbH & Co. KG

Klingenbergstraße 26

D-32758 Detmold

Germany

www.weidmueller.com

Accessories

2.5 mm²


Screwable cross-connections are easy to mount and de mount. Thanks to the big contact surface, even high currents can be transmitted with maximum contact reliability.

General ordering data

| | | |
|------------|----------------------------|---|
| Type | WQV 2.5/3 | Version |
| Order No. | 1053760000 | Cross-connector (terminal), when screwed in, Number of poles: 3, |
| GTIN (EAN) | 4008190058999 | Pitch in mm (P): 5.10, Insulated: Yes, 32 A, yellow |
| Qty. | 50 pc(s). | |
| Type | WQV 2.5/7 | Version |
| Order No. | 1054160000 | Cross-connector (terminal), when screwed in, Number of poles: 7, |
| GTIN (EAN) | 4008190011246 | Pitch in mm (P): 5.10, Insulated: Yes, 32 A, yellow |
| Qty. | 10 pc(s). | |
| Type | WQV 2.5/6 | Version |
| Order No. | 1054060000 | Cross-connector (terminal), when screwed in, Number of poles: 6, |
| GTIN (EAN) | 4008190102272 | Pitch in mm (P): 5.10, Insulated: Yes, 32 A, yellow |
| Qty. | 10 pc(s). | |
| Type | WQV 2.5/20 | Version |
| Order No. | 1577570000 | Cross-connector (terminal), when screwed in, Number of poles: 20, |
| GTIN (EAN) | 4008190125868 | Pitch in mm (P): 5.10, Insulated: Yes, 32 A, yellow |
| Qty. | 10 pc(s). | |
| Type | WQV 2.5/32 | Version |
| Order No. | 1577600000 | Cross-connector (terminal), when screwed in, Number of poles: 32, |
| GTIN (EAN) | 4008190154035 | Pitch in mm (P): 5.10, Insulated: Yes, 32 A, yellow |
| Qty. | 10 pc(s). | |
| Type | WQV 2.5/30 | Version |
| Order No. | 1067500000 | Cross-connector (terminal), when screwed in, Number of poles: 30, |
| GTIN (EAN) | 4008190031107 | Pitch in mm (P): 5.10, Insulated: Yes, 32 A, yellow |
| Qty. | 10 pc(s). | |
| Type | WQV 2.5/4 | Version |
| Order No. | 1053860000 | Cross-connector (terminal), when screwed in, Number of poles: 4, |
| GTIN (EAN) | 4008190049706 | Pitch in mm (P): 5.10, Insulated: Yes, 32 A, yellow |
| Qty. | 50 pc(s). | |
| Type | WQV 2.5/15 | Version |
| Order No. | 1059660000 | Cross-connector (terminal), when screwed in, Number of poles: 15, |
| GTIN (EAN) | 4008190002411 | Pitch in mm (P): 5.10, Insulated: Yes, 32 A, yellow |
| Qty. | 10 pc(s). | |
| Type | WQV 2.5/8 | Version |
| Order No. | 1054260000 | Cross-connector (terminal), when screwed in, Number of poles: 8, |
| GTIN (EAN) | 4008190073572 | Pitch in mm (P): 5.10, Insulated: Yes, 32 A, yellow |
| Qty. | 10 pc(s). | |
| Type | WQV 2.5/2 | Version |
| Order No. | 1053660000 | Cross-connector (terminal), when screwed in, Number of poles: 2, |
| GTIN (EAN) | 4008190031121 | Pitch in mm (P): 5.10, Insulated: Yes, 32 A, yellow |
| Qty. | 50 pc(s). | |

Creation date July 7, 2024 8:19:58 PM CEST

Catalogue status 29.06.2024 / We reserve the right to make technical changes.

WDU 2.5 FF 2X2.8

Weidmüller Interface GmbH & Co. KG

Klingenbergstraße 26

D-32758 Detmold

Germany

www.weidmueller.com

Accessories

| | | |
|------------|----------------------------|---|
| Type | WQV 2.5/5 | Version |
| Order No. | 1053960000 | Cross-connector (terminal), when screwed in, Number of poles: 5, |
| GTIN (EAN) | 4008190158446 | Pitch in mm (P): 5.10, Insulated: Yes, 32 A, yellow |
| Qty. | 10 pc(s). | |
| Type | WQV 2.5/10 | Version |
| Order No. | 1054460000 | Cross-connector (terminal), when screwed in, Number of poles: 10, |
| GTIN (EAN) | 4008190135089 | Pitch in mm (P): 5.10, Insulated: Yes, 32 A, yellow |
| Qty. | 20 pc(s). | |

Blank



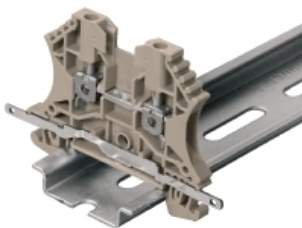
The WAD connector marker is suitable for W-series terminals and for the WEW 35/2 and ZEW 35/2 end brackets. The markers are available as blank markers, with custom printing or standard print with lightning symbol. The WAD MultiCard markers are suitable for labelling with PrintJet CONNECT printers.

For custom printing: Please send us a file of our labeling software M-Print PRO or M-Print PRO Online (without installation) for your labeling specifications.

General ordering data

| | | |
|------------|----------------------------|---|
| Type | WAD 5 MC NE WS | Version |
| Order No. | 1112910000 | Group markers, Cover, 33.3 x 5 mm, Pitch in mm (P): 5.00 WDU 2.5, |
| GTIN (EAN) | 4032248891689 | WEW 35/2, ZEW 35/2, white |
| Qty. | 48 pc(s). | |

Shielding connection



With the LS 2.8 WDU2.5-10, many feed-through modular terminal blocks from the W series can be converted very easily. Inserting the LS 2.8 WDU2.5-10 allows the cable shielding braid to be looped through directly at the terminal block by soldering or using a suitable flat cable lug.

General ordering data

| | | |
|------------|----------------------------|----------------------|
| Type | LS 2.8 WDU2.5-10 | Version |
| Order No. | 1056400000 | W-Series, Shield bus |
| GTIN (EAN) | 4008190036454 | |
| Qty. | 100 pc(s). | |

WDU 2.5 FF 2X2.8

Weidmüller Interface GmbH & Co. KG

Klingenbergstraße 26

D-32758 Detmold

Germany

www.weidmueller.com

Accessories

Blank



WS markers are the perfect match for the W-series connectors. Thanks to their system compatibility, the WS tags can also be used with the I-series and the Z-series. The large marking surfaces do not only permit long character strings but also multi-line text. WS markers are ideal for labels with long, customised character strings. Thanks to the proven MultiCard format, printing with PrintJet CONNECT oder/or Plotter is possible.

- Can be fitted in strips or individually
- Markers in proven MultiCard format

For custom printing: Please send us a file of our labeling software M-Print PRO or M-Print PRO Online (without installation) for your labeling specifications.

General ordering data

| Type | WS 12/5 MC NE WS | Version |
|------------|----------------------------|--|
| Order No. | 1609860000 | WS, Terminal marker, 12 x 5 mm, Pitch in mm (P): 5.00 Weidmueller, |
| GTIN (EAN) | 4008190203481 | Allen-Bradley, white |
| Qty. | 720 pc(s). | |

WS 12/5



WS/ DEK

MultiMark terminal markers use an innovative composite material made from two components. The hard base contour of the marker snaps securely into the connector. The elastic surface finish makes the marker easy to mount. This specially punched material enables the strips to be stretched to accommodate the slight variations in spacing that tend to add up, especially with long terminal blocks. Another advantage: the excellent printability of the surface material guarantees durable and wear-resistant labelling. A print resolution of 300 dpi also produces a very legible script.

Your benefits with MultiMark

- Firm hold and durable printing
- Continuous strips save installation time
- Easy mounting thanks to an innovative composite material
- Large label field for optimal legibility
- High flexibility thanks to manufacturer independence

General ordering data

| Type | WS 12/5 MM WS | Version |
|------------|----------------------------|--|
| Order No. | 2007190000 | WS, Terminal marker, 12 x 5 mm, Weidmueller, white |
| GTIN (EAN) | 4050118392036 | |
| Qty. | 800 pc(s). | |

WDU 2.5 FF 2X2.8

Weidmüller Interface GmbH & Co. KG

Klingenbergstraße 26

D-32758 Detmold

Germany

www.weidmueller.com

Accessories

2.5-10 mm²


2.5-10
mm²

End plates are fitted to the open side of the last modular terminal before the end bracket. The use of an end plate ensures the function of the modular terminal and the specified rated voltage. It guarantees protection against contact with live parts and makes the final terminal finger-proof.

General ordering data

| | | |
|------------|----------------------------|--|
| Type | WAP 2.5-10 | Version |
| Order No. | 1050000000 | End plate (terminals), 56 mm x 1.5 mm, dark beige |
| GTIN (EAN) | 4008190103149 | |
| Qty. | 50 pc(s). | |
| Type | WAP 16+35 WTW 2.5-10 BL | Version |
| Order No. | 1050180000 | End and partition plate for terminals, End plate, 56 mm x 1.5 mm, blue |
| GTIN (EAN) | 4008190013899 | |
| Qty. | 20 pc(s). | |
| Type | WAP 2.5-10 WS | Version |
| Order No. | 1050090000 | End plate (terminals), 56 mm x 1.5 mm, white |
| GTIN (EAN) | 4008190406790 | |
| Qty. | 50 pc(s). | |
| Type | WAP 2.5-10 VI | Version |
| Order No. | 1072210000 | End plate (terminals), 56 mm x 1.5 mm, violet |
| GTIN (EAN) | 4008190455460 | |
| Qty. | 50 pc(s). | |
| Type | WAP 2.5-10 RT | Version |
| Order No. | 1050040000 | End plate (terminals), 56 mm x 1.5 mm, red |
| GTIN (EAN) | 4008190406783 | |
| Qty. | 50 pc(s). | |
| Type | WAP 2.5-10 GE | Version |
| Order No. | 1050020000 | End plate (terminals), 56 mm x 1.5 mm, yellow |
| GTIN (EAN) | 4008190406776 | |
| Qty. | 50 pc(s). | |
| Type | WAP 2.5-10 OR | Version |
| Order No. | 1050060000 | End plate (terminals), 56 mm x 1.5 mm, orange |
| GTIN (EAN) | 4008190406769 | |
| Qty. | 50 pc(s). | |
| Type | WAP 2.5-10 GR | Version |
| Order No. | 1050050000 | End plate (terminals), 56 mm x 1.5 mm, grey |
| GTIN (EAN) | 4008190455484 | |
| Qty. | 50 pc(s). | |
| Type | WAP 2.5-10 GN | Version |
| Order No. | 1072200000 | End plate (terminals), 56 mm x 1.5 mm, green |
| GTIN (EAN) | 4008190455491 | |
| Qty. | 50 pc(s). | |
| Type | WAP 16+35 WTW 2.5-10 | Version |
| Order No. | 1050100000 | End and partition plate for terminals, End plate, 56 mm x 1.5 mm, dark beige |
| GTIN (EAN) | 4008190079901 | |
| Qty. | 20 pc(s). | |

WDU 2.5 FF 2X2.8

Weidmüller Interface GmbH & Co. KG

Klingenbergstraße 26

D-32758 Detmold

Germany

www.weidmueller.com

Accessories

| | | |
|------------|----------------------------|--|
| Type | WAP 2.5-10 BL | Version |
| Order No. | 1050080000 | End plate (terminals), 56 mm x 1.5 mm, blue |
| GTIN (EAN) | 4008190136611 | |
| Qty. | 50 pc(s). | |
| Type | WAP 2.5-10 SW | Version |
| Order No. | 1050010000 | End plate (terminals), 56 mm x 1.5 mm, black |
| GTIN (EAN) | 4008190406806 | |
| Qty. | 50 pc(s). | |
| Type | WAP 2.5-10 BR | Version |
| Order No. | 1050070000 | End plate (terminals), 56 mm x 1.5 mm, brown |
| GTIN (EAN) | 4008190455507 | |
| Qty. | 50 pc(s). | |

W-Series



Warning covers with a flash symbol provide more safety for man and machine. They are used where external voltage must be indicated within the application.

General ordering data

| | | |
|------------|----------------------------|--|
| Type | WAD 4 GE BED | Version |
| Order No. | 1072000000 | Terminal cover, PA 66, yellow, Height: 19.8 mm, Width: 4.5 mm, |
| GTIN (EAN) | 4008190446109 | Depth: 9.6 mm |
| Qty. | 50 pc(s). | |
| Type | WAD 4 WS | Version |
| Order No. | 1072100000 | Terminal cover, PA 66, white, Height: 19.8 mm, Width: 4.5 mm, |
| GTIN (EAN) | 4008190446116 | Depth: 9.6 mm |
| Qty. | 50 pc(s). | |

Marker holder



The marker holder offer the possibility of additional mounting of standard markers with a pitch of 5 or 5.1 mm. The angled holders can be optionally snapped together and could be mounted in all standard marking channels of the Klippon[®] Connect modular terminal blocks. Fitting marker types could be found under the respective accessories of the designation marking holder.

General ordering data

| | | |
|------------|----------------------------|----------------------------|
| Type | BZT 1 WS 10/5 | Version |
| Order No. | 1805490000 | Accessories, Marker holder |
| GTIN (EAN) | 4032248270231 | |
| Qty. | 100 pc(s). | |

Creation date July 7, 2024 8:19:58 PM CEST

WDU 2.5 FF 2X2.8**Weidmüller Interface GmbH & Co. KG**

Klingenbergstraße 26

D-32758 Detmold

Germany

www.weidmueller.com**Accessories**

| | | |
|------------|----------------------------|----------------------------|
| Type | BZT 1 ZA WS 10/5 | Version |
| Order No. | 1805520000 | Accessories, Marker holder |
| GTIN (EAN) | 4032248270248 | |
| Qty. | 100 pc(s). | |

W-Series

Weidmüller's range of products includes end brackets that guarantee a permanent, reliable mounting on the terminal rail and prevent sliding. Versions with and without screws are available. The end brackets include marking options, also for group markers, and also a test plug holder.

General ordering data

| | | |
|------------|----------------------------|--|
| Type | WEW 35/2 | Version |
| Order No. | 1061200000 | End bracket, Wemid, dark beige, Rail: TS 35, when screwed in |
| GTIN (EAN) | 4008190030230 | |
| Qty. | 50 pc(s). | |